

- NOTES:
1. CHASSIS PROVISION - 2018 RAM 5550 SLT 4X4 DSL 4-DR.
  2. BODY CONSTRUCTION - ALUMINUM.
  3. DOOR CONSTRUCTION - BRUSHED ALUMINUM ROLL-UP - NON-LOCKING.
  4. ROM LED TRACK LIGHT (6) SIDE COMPARTMENTS ONLY.
  5. PAINT - MATCH NAFECO SUPPLIED RAM CHASSIS.
  6. INNER COMPARTMENT FINISH - ZOLATONE APOLLO GRAY.
  7. LOAD SPACE FINISH - ZOLATONE APOLLO GRAY.
  8. TRAY FINISH - NATURAL ALUMINUM.
  9. WARNER BRANDED REAR MUD FLAPS INSTALLED.

OVER ALL CONSTRUCTION DETAIL +/- 1/2" OVER 144".

Date & Time Of Drawing Creation: Monday, December 05, 2011 8:43:47 AM  
 Date & Time Of Last Save: Saturday, March 11, 2012 10:59:44 AM  
 File Location: \\saturday.march.11.2012.10:59:44.AM  
 Drawing Created By: [Signature]

8

7

6

5

4

3

2

1

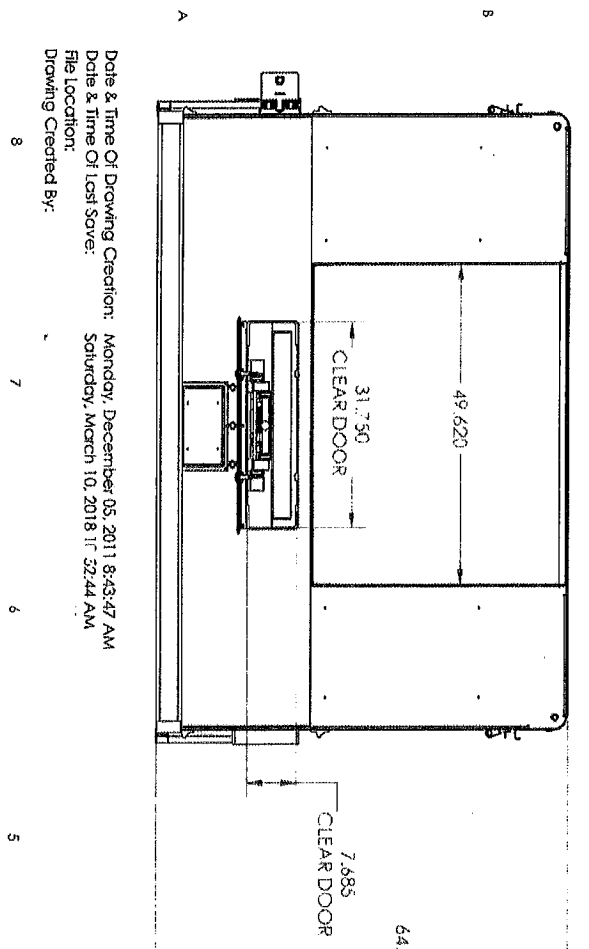
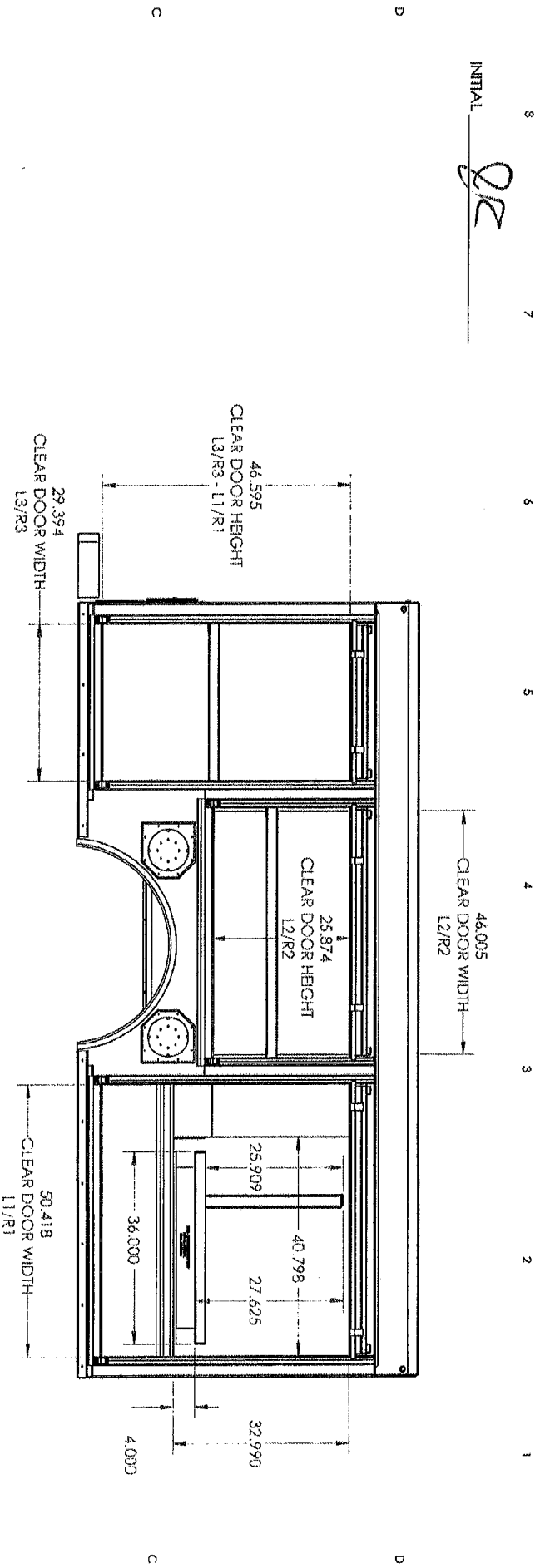
PROPRIETARY AND CONFIDENTIAL  
 INFORMATION CONTAINED IN THIS  
 DRAWING IS THE SOLE PROPERTY OF  
 WARNER BROTHERS COMPANY  
 PART OF ANY REPRODUCTION  
 WITHOUT PERMISSION OF  
 WARNER BROTHERS COMPANY  
 IS PROHIBITED.

UNLESS OTHERWISE SPECIFIED,  
 DIMENSIONS ARE IN INCHES.  
 TOLERANCES:  
 DIMENSIONS 1/2" AND OVER ±.015  
 DIMENSIONS .062" TO .125" ±.005  
 DIMENSIONS .125" TO .062" ±.005  
 DIMENSIONS .062" AND UNDER ±.005  
 THREE PLACE DECIMAL ±.005  
 MATERIAL:  
 ALUMINUM  
 FINISH:  
 PAINT  
 DO NOT SCALE DRAWING

JOB NUMBER: 41294  
 CUSTOMER: NAFECO - FAIRVIEW  
 NUMBER REQUIRED: 1  
 BLANK SIZES: SEE B.O.M.  
 ASSEMBLY - NAFECO - FAIRVIEW - 41294  
 NAME: [Signature] DATE: [Signature]

DRAWN: [Signature]  
 CHECKED: [Signature]  
 ENG APPR: [Signature]  
 MFG APPR: [Signature]  
 O/A: [Signature]  
 PROGRAM NUMBER: N/A

INITIAL DR



**PROPRIETARY AND CONFIDENTIAL**  
 THE INFORMATION CONTAINED HEREIN IS THE PROPERTY OF NAFECO. IT IS TO BE USED ONLY FOR THE PROJECT AND NOT TO BE REPRODUCED OR TRANSMITTED IN ANY FORM OR BY ANY MEANS, ELECTRONIC OR MECHANICAL, INCLUDING PHOTOCOPYING, RECORDING, OR BY ANY INFORMATION STORAGE AND RETRIEVAL SYSTEM. NAFECO ASSUMES NO LIABILITY FOR ANY ERRORS OR OMISSIONS. NAFECO ASSUMES NO LIABILITY FOR ANY DAMAGES, INCLUDING CONSEQUENTIAL DAMAGES, ARISING FROM THE USE OF THIS INFORMATION.

UNLESS OTHERWISE SPECIFIED:  
 DIMENSIONS ARE IN INCHES  
 TOLERANCES:  
 FRACTIONAL 1/32  
 ANGULAR MAXIMUM 1/4°  
 HOLE POSITION 0.005  
 HOLE SIZE 0.005  
 HOLE LOCATION 0.005  
 HOLE PLACEMENT 0.005  
 MATERIAL ALUMINUM  
 FINISH PAINT  
 DO NOT SCALE DRAWING

**TITLE:** ASSEMBLY - NAFECO - FAIRVIEW - 41294

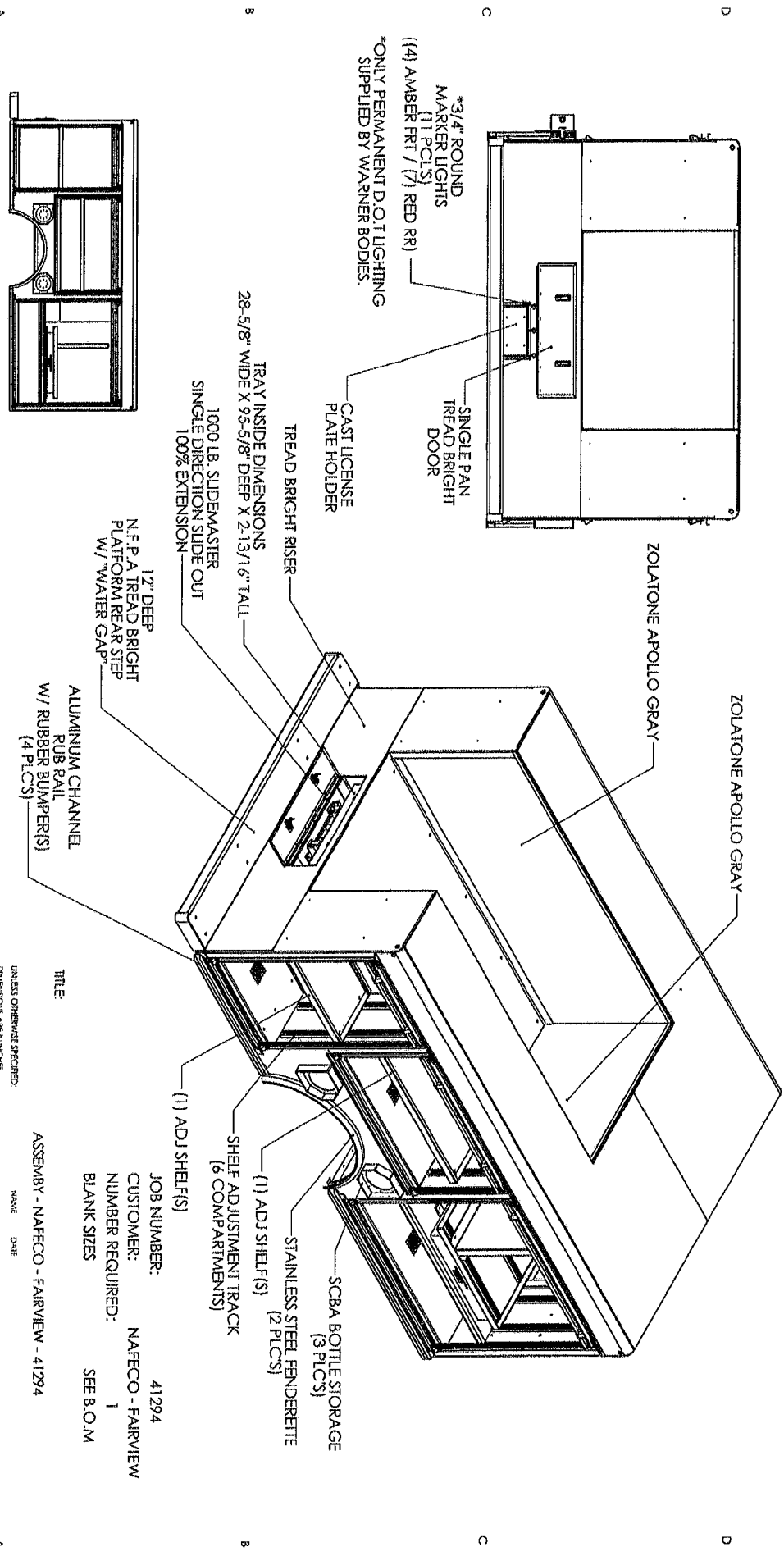
**JOB NUMBER:** 41294  
**CUSTOMER:** NAFECO - FAIRVIEW  
**NUMBER REQUIRED:** 1  
**BLANK SIZES:** SEE B.O.M.

**DRAWN:** [Blank]  
**CHECKED:** [Blank]  
**DATE:** 1

**PROGRAM NUMBER:** N/A

Date & Time Of Drawing Creation: Monday, December 05, 2011 8:43:47 AM  
 Date & Time Of Last Save: Saturday, March 10, 2018 11:52:44 AM  
 File Location:  
 Drawing Created By:

INITIAL RC



Date & Time Of Drawing Creation: Monday, December 05, 2011 8:43:47 AM  
 Date & Time Of Last Save: Saturday, March 10, 2012 10:00:00 AM  
 File Location: R:\m  
 Drawing Created By:

8 7 6 5 4 3 2 1

PROBABILITY AND CONSPIRACY  
 THE INFORMATION CONTAINED IN THIS DRAWING IS THE SOLE PROPERTY OF NAFECO - FAIRVIEW AND IS NOT TO BE REPRODUCED, COPIED, OR TRANSMITTED IN ANY FORM OR BY ANY MEANS WITHOUT THE WRITTEN PERMISSION OF NAFECO - FAIRVIEW. NAFECO - FAIRVIEW IS PROHIBITED FROM REPRODUCING THIS DRAWING.

UNLESS OTHERWISE SPECIFIED, DIMENSIONS ARE IN INCHES  
 DECIMALS: 1/32  
 FRACTIONS: 1/8, 1/4, 3/8, 1/2, 5/8, 3/4, 7/8  
 ANGULAR: MAX CHS: 1/4" BEND 31°  
 TYPICAL: DECIMAL: ± 0.005  
 FRACTIONS: DECIMAL: ± 0.005  
 MATERIAL: ALUMINUM  
 FINISH: PAINT  
 PROGRAM NUMBER: N/A

JOB NUMBER: 41294  
 CUSTOMER: NAFECO - FAIRVIEW  
 NUMBER REQUIRED: 1  
 BLANK SIZES: SEE B.O.M.

ASSEMBLY - NAFECO - FAIRVIEW - 41294

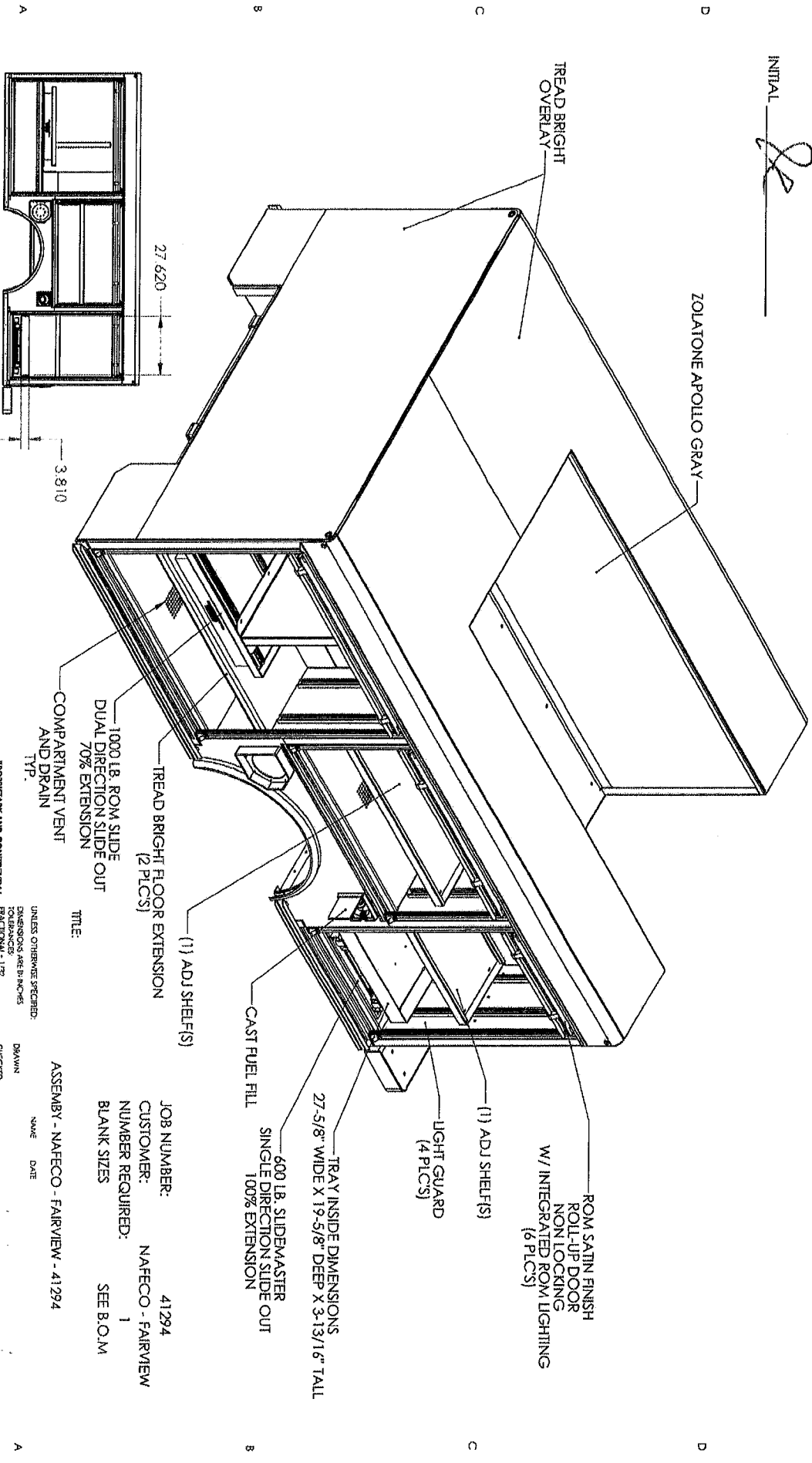
PROGRAM NUMBER: N/A

A

INITIAL

*Re*

8 7 6 5 4 3 2 1



Date & Time Of Drawing Creation: Monday, December 05, 2011 8:43:47 AM  
 Date & Time Of Last Save: Saturday, March 10, 2018 10:52:44 AM  
 File Location:  
 Drawing Created By:

8 7 6 5 4 3 2 1

PROPRIETARY AND CONFIDENTIAL  
 THE INFORMATION CONTAINED IN THIS DRAWING IS THE PROPERTY OF NAFECO AND IS TO BE USED ONLY FOR THE PROJECT AND FOR WHICH IT WAS PREPARED. IT IS NOT TO BE REPRODUCED OR TRANSMITTED IN ANY FORM OR BY ANY MEANS, ELECTRONIC OR MECHANICAL, INCLUDING PHOTOCOPYING, RECORDING, OR BY ANY INFORMATION STORAGE AND RETRIEVAL SYSTEM, WITHOUT THE WRITTEN PERMISSION OF NAFECO. NAFECO ASSUMES NO LIABILITY FOR ANY DAMAGE OR LOSS OF PROFITS, BUSINESS, OR REPUTATION, OR FOR ANY SPECIAL, INCIDENTAL, OR CONSEQUENTIAL DAMAGES, INCLUDING LOST PROFITS, ARISING OUT OF THE USE OF THIS DRAWING, EVEN IF ADVISED OF THE POSSIBILITY THEREOF.

UNLESS OTHERWISE SPECIFIED, DIMENSIONS ARE IN INCHES. FINISHES ARE BY NICHES. RADIUSES: 1/2" UNLESS OTHERWISE SPECIFIED. MATERIAL: ALUMINUM. PAINT: DO NOT SCALE DRAWING.

PROGRAM NUMBER: N/A

JOB NUMBER: 41294  
 CUSTOMER: NAFECO - FAIRVIEW  
 NUMBER REQUIRED: 1  
 BLANK SIZES: SEE B.O.M.  
 ASSEMBLY - NAFECO - FAIRVIEW - 41294

A