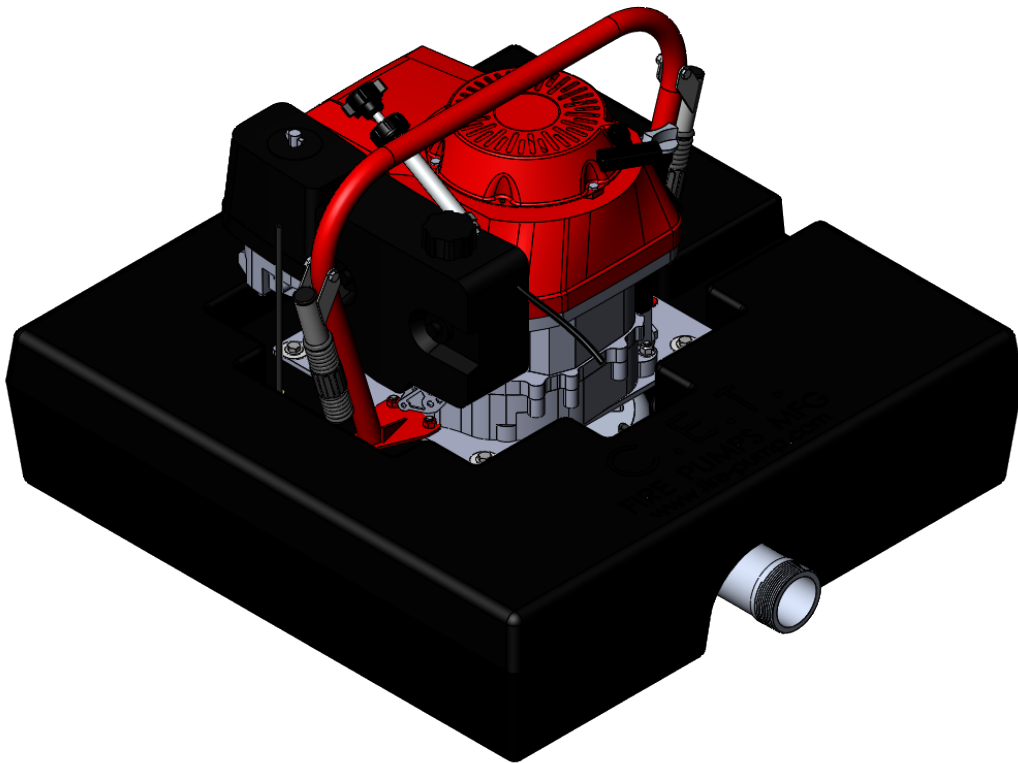
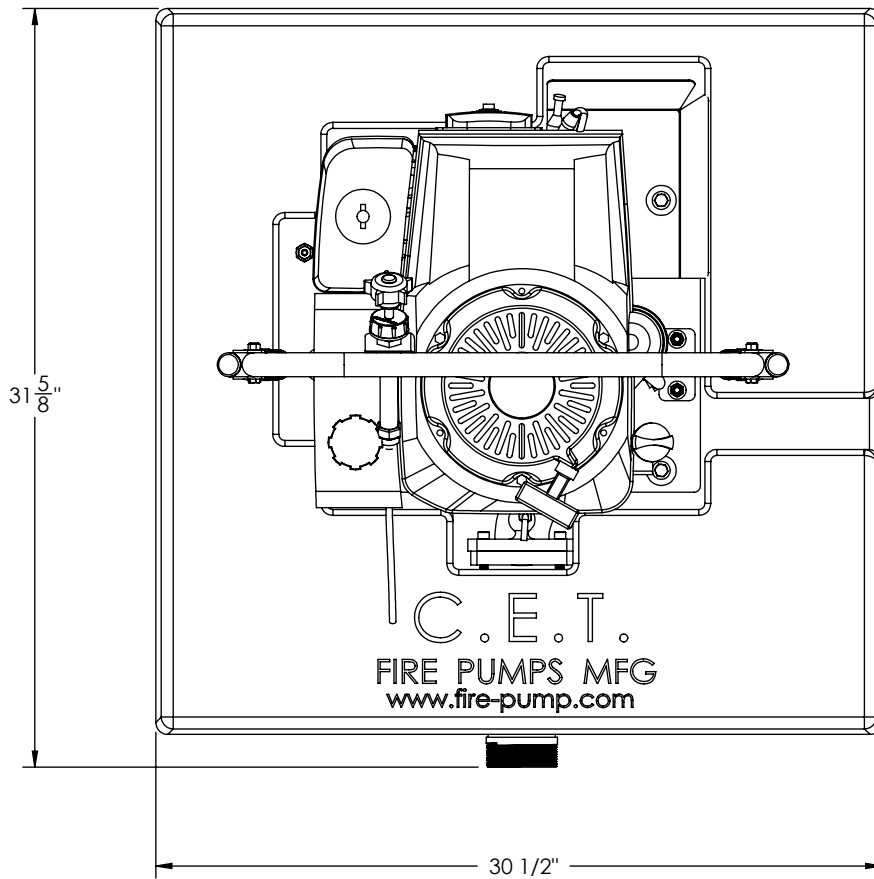
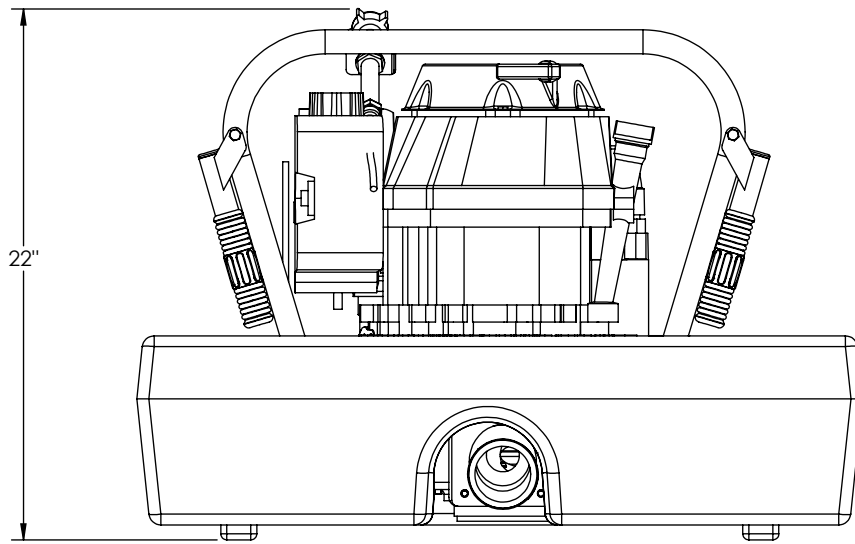


FLOATING PORTABLE PUMP
PPF-13hpHND-FL
GXV390 HONDA WITH FLOATING PUMP





WET WEIGHT : 125 LBS.

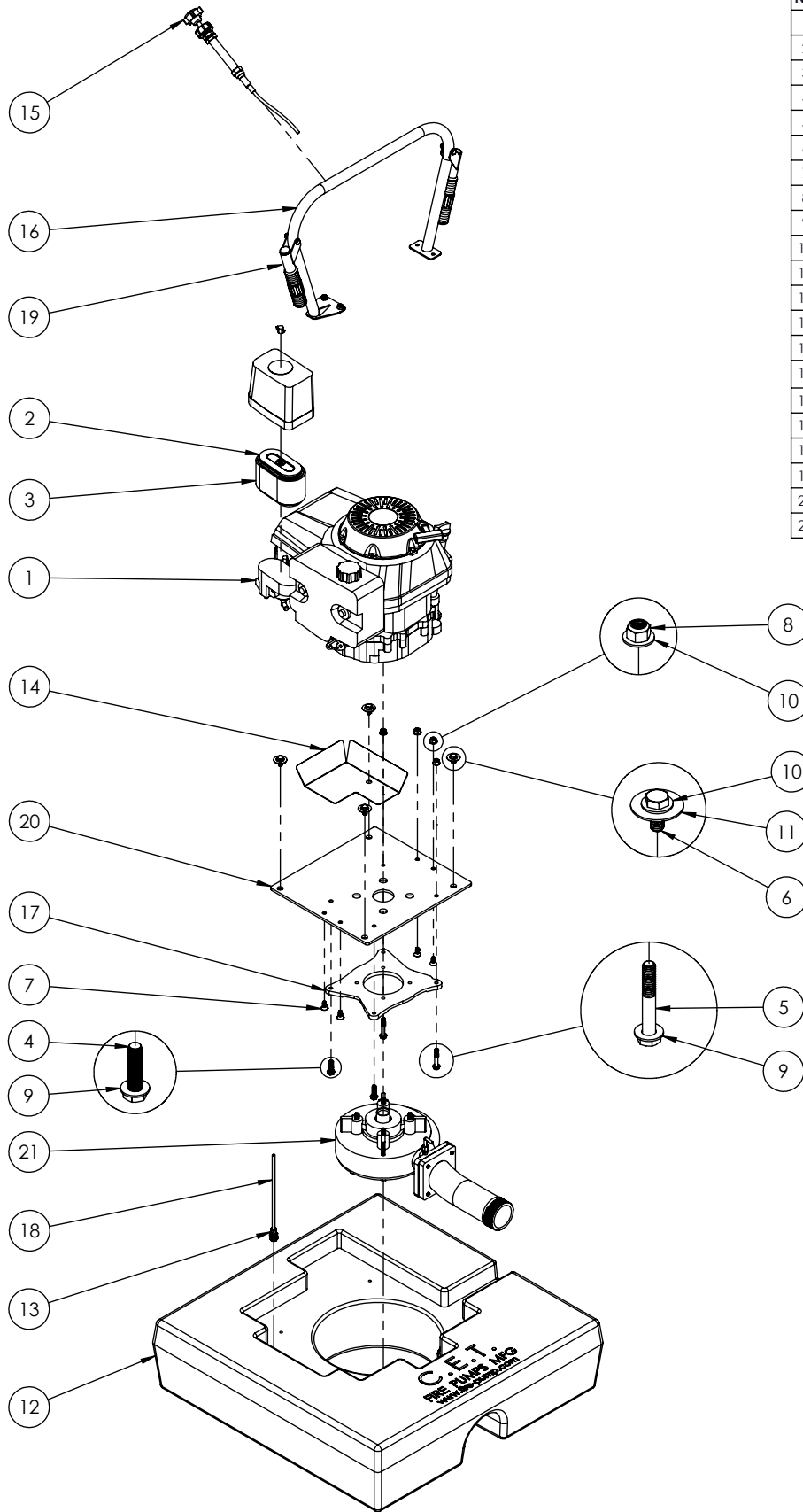
A	Version A	01-01-16	M.P.
REV.	DESCRIPTION	DATE	BY

		CREATED BY: M.P. DATE: 08-09-16	TITLE : FLOATING PUMP 13hp HONDA	
		VERIFIED BY: M.P. DATE: 08-09-16		No: PO-33FL-0701-A
		BY: M.P. DATE: 08-09-16		
		BY: M.P. DATE: 08-09-16		

WARNING



THIS DOCUMENT REMAINS THE PROPERTY OF C.E.T. FIRE PUMPS MFG.

ALL REPRODUCTION WITHOUT WRITTEN AGREEMENT FROM C.E.T. FIRE PUMPS MFG IS TOTALLY PROHIBITED.

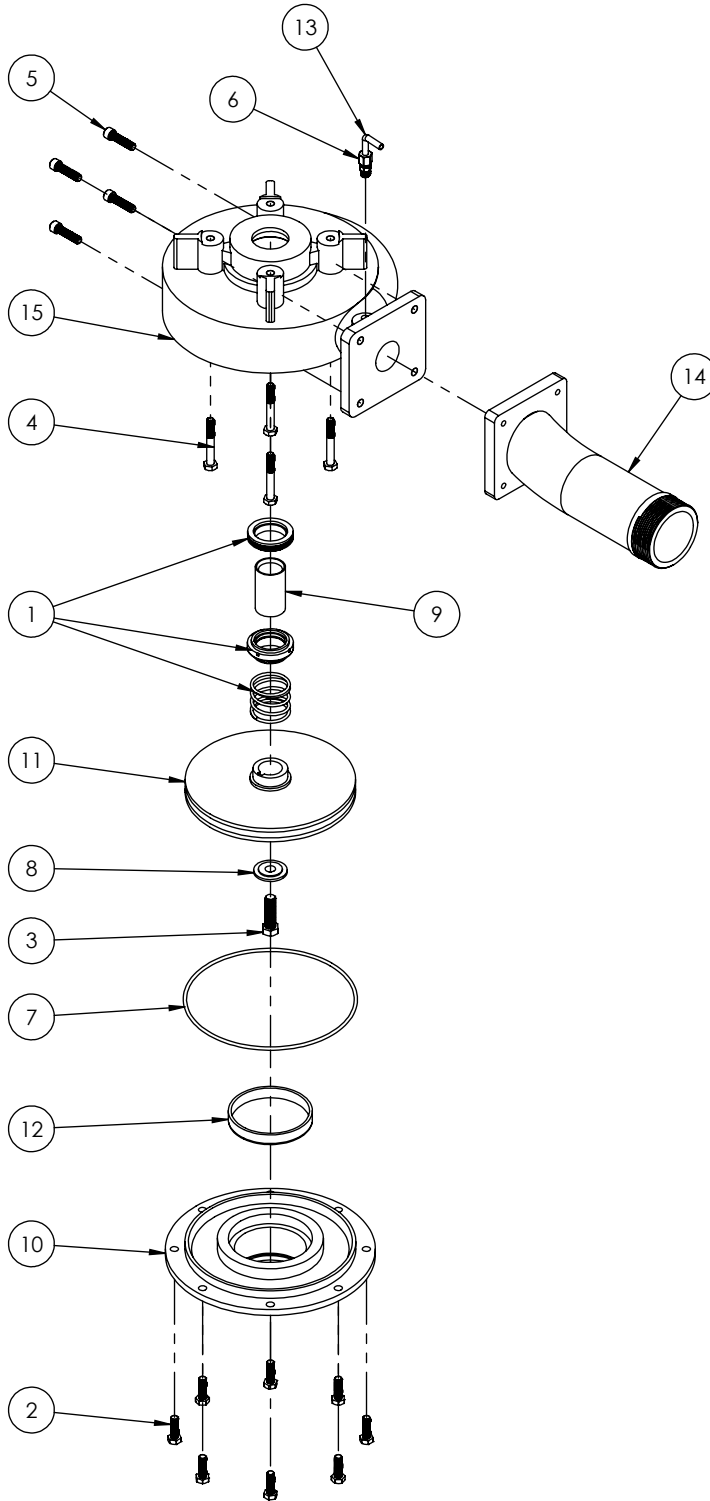


NO	PART NAME	DESCRIPTION	QTY
1	001-PP1-052	GXV390 HONDA ENGINE MANUAL	1
2	003-PP1-108	AIR FILTER	1
3	003-PP1-109	FOAM AIR FILTER	1
4	022-PP1-404	HEX. BOLT 5/16"-18 x 1-1/4" (SS)	2
5	022-PP1-421	HEX. BOLT 5/16-18 X 2" (SS)	2
6	022-PP1-429	HEX. BOLT 5/16-18 X 3/4" (SS)	4
7	022-PP1-997	MACHINE SCREW FH 5/16"-18 x 3/4"	4
8	023-PP1-005	HEX. NYLON LOCK NUT 5/16"-18	4
9	024-PP1-004	FLAT WASHER 5/16" ID x 3/4"OD	6
10	024-PP1-400	FLAT WASHER 5/16" ID x 3/4" OD (SS)	6
11	024-PP1-405	FLAT WASHER 5/16" ID x 1-1/4" OD (SS)	4
12	031-PP1-997	FLOAT	1
13	045-PP1-102	FITTING 16-63-4A	1
14	057-PP1-006A	MUFFLER SHIELD	1
15	060-PP1-002	THROTTLE CONTROL (6pi)	1
16	PO-0000-1735	FRAME	1
17	PO-0000-3608	ADAPTER	1
18	PO-0000-6501	NYLON AIR BREAK TUBING	1
19	PO-0000-6601	SMALL HANDLE	2
20	PO-0000-6705	ENGINE SUPPORT	1
21	PO-00FL-2101	PUMP END	1

A	Version A	01-01-16	M.P.
REV.	DESCRIPTION	DATE	BY

		CREATED BY: M.P. DATE: 08-09-16	TITLE : FLOATING PUMP 13hp HONDA	WARNING THIS DOCUMENT REMAINS THE PROPERTY OF C.E.T. FIRE PUMPS MFG. ALL REPRODUCTION WITHOUT WRITTEN AGREEMENT FROM C.E.T. FIRE PUMPS MFG IS TOTALLY PROHIBITED.
		VERIFIED BY: M.P. DATE: 08-09-16		

NO	PART NAME	DESCRIPTION	QTY
1	020-PP1-002	MECHANICAL SEAL 1-1/4" (SS)	1
2	022-PP1-403	HEX. BOLT 5/16"-18 x 1" (SS)	8
3	022-PP1-409	HEX. BOLT 7/16"-20 x 1-1/2" (SS)	1
4	022-PP1-422	HEX. BOLT 5/16"-18 x 2-1/4" (SS)	4
5	022-PP1-872	SOCKET HEAD CAP SCREW 5/16"-18 x 1-1/4"	4
6	045-PP1-503	PIPE CONNECTOR	1
7	052-PP1-262	O'RING	1
8	060-PP1-056	CAP	1
9	060-PP1-081A	BUSHING	1
10	PO-0000-2308	COVER	1
11	PO-0000-2405	IMPELLER	1
12	PO-0000-2610	WATER RING	1
13	PO-0000-6502	90 DEG. 1/4" PIPE	1
14	PO-0000-7911	OUTLET ADAPTER	1
15	PO-00FL-2202	CASING	1



A	Version A	01-01-16	M.P.
REV.	DESCRIPTION	DATE	BY



nqa.
 ISO 9001
 Registered
 Quality
 Management

CREATED
 BY: M.P.
 DATE: 30-09-15

VERIFIED
 BY: M.P.
 DATE: 03-11-15

TITLE : PUMP END
 11-13HP-FL

No: PO-00FL-2101

WARNING

THIS DOCUMENT REMAINS THE PROPERTY OF C.E.T. FIRE PUMPS MFG.

ALL REPRODUCTION WITHOUT WRITTEN AGREEMENT FROM C.E.T. FIRE PUMPS MFG IS TOTALLY PROHIBITED.