



***ACTION DELIVERS!***

# **ACTION COUPLING & EQUIPMENT**

**330-279-4242 | 1-800-327-2779 | FAX 330-279-4208**

**WWW.ACTIONCOUPLING.COM**

**VOLUME 15A**

Municipal & Industrial  
Couplings, Adapters,  
and Related Equipment

# ABOUT ACTION

Action Coupling & Equipment, Inc. is located in the heart of Amish Country in Holmesville, Ohio. Action Coupling is the largest manufacturer of high-strength, lightweight couplings and related equipment in the U.S., and has proudly been leading the way since 1991.

As a leading manufacturer, we pride ourselves in exceptional customer care. We are committed to producing high quality couplings, adapters and related equipment that our customers can count on. We rely on our talented personnel, expertise and creative innovations to produce superior products at an affordable price.

The majority of our products are manufactured right here in our facilities in Holmesville by hardworking, small-town American people who care about what they do.

## BUILT TOUGH

Action lightweight extruded couplings are made from aircraft grade 6061-T6 aluminum and are hard anodized in-house providing a hardened corrosion resistant finish. We also manufacture heavy duty cast red brass couplings, typically used in both military and industrial environments. With over 24 years of manufacturing and service experience, we can provide the special threads and other requirements needed for most any fire and industrial application. Action stocks over 200 different shapes of extruded aluminum purchased directly from United States mills to provide the best products, service and delivery.



**2 LIGHTWEIGHT EXTRUDED FIRE HOSE COUPLINGS**  
Municipal and Industrial, A+ Series  
Forestry, external lug  
Rack Hose  
Heavy Duty Brass  
Hard Suction

**3**  
Expansion Ring  
Field Attachable  
Booster Hose Coupling  
Cam Lock Coupling

**4 LIGHTWEIGHT ADAPTERS**  
AA Series Lightweight Adapters  
Cam Lock Adapters  
In-Line Tee  
Water Curtain

**5 GAUGES & CAPS/PLUGS**  
Line Gauge  
Protected Line Gauge  
Cap Gauge  
Two-Part Cap  
Solid One-Piece Cap  
One-Piece Plugs

**6 STORZ EQUIPMENT**  
Storz Expansion Ring Couplings  
Storz Conversion Elbows  
Storz Spanners  
Metal Face Storz Adapters  
Storz Cap  
Storz Field-Attachable Couplings  
Self-Locking Storz Couplings

**7 DRY HYDRANT SYSTEMS AND STRAINERS**  
Dry Hydrant Systems  
Continuous Swivel Dry Hydrant  
Low Level Strainer  
Heavy Duty Debris Barrel Strainer  
Basket Strainer/Diffuser  
Sight Glass  
Power Jet Siphon

**8 PARTS AND ACCESSORIES**  
Mounting Plates  
Ring Extractor  
Combination Holder Set  
Folding Spanner Wrench  
Triple Holder Set  
Gaskets  
Expansion Rings  
Bearings and Plugs  
Hose Mender  
Simple Action "Y"

**9 NEW & FEATURED PRODUCTS**  
Action Manifold  
Bear Claw Manifold  
Hydrant Gate Valve  
Gated WYE Valve  
Single Jacket Hose Clamp  
The Green Machine



## ACE A+ Series Extruded Fire Hose Couplings

These heavy-duty, lightweight fire hose couplings are made from 6061-T6 high-strength aluminum alloy. Swivels are attached with a piston ring, stainless balls, or roller bearings. No roll-over or still threads are ever used to attach swivels.

Male and swivel have rocker lugs. Sizes from 1" to 6" waterway. The 6061-T6 aircraft aluminum alloy gets a smooth hardcoat finish. Weight is one-third that of cast brass and three times as strong. Comes complete with rings and gaskets. All gaskets are lathe cut and the expansion rings provided are 85-15 red brass.



A+33



A+10



A+15



A+175



A+215



A+25

## Forestry Couplings



AF+10 and AF+15

U.S.D.A. Listed. Meets USFS Spec. 5100-108. Certificates of conformance furnished on request. Made of high-strength, lightweight aircraft aluminum 6061-T6 alloy. Hardcoated in our own plant for corrosion and abrasion resistance. Complete with expansion rings and gaskets. Two rocker lugs on swivel only. 1" and 1-1/2" sizes. Available in complete sets only.

## Rack Hose Couplings



AR+15

Lightweight, heavy-duty hardcoated 6061-T6 aircraft aluminum alloy. Available in 1-1/2". Rocker lugs on swivel only. Comes complete with rings and gaskets. All gaskets are lathe cut and expansion rings are 85-15 red brass.

## Brass Couplings

Our brass castings are cast in the USA from domestic Ingot.

## Rack Hose Couplings



ABR+15

Available as a heavy-duty brass coupling in 1-1/2" size. Comes complete with rings and gaskets. All gaskets are lathe cut and the expansion rings are 85-15 red brass. Available in pin lug or rocker lug.

## B+ Series Heavy-Duty Brass Couplings

The finest quality brass couplings available

Complete with rings and gaskets. All gaskets are lathe cut and expansion rings are 85-15 red brass. Corrosion resistant and commonly used in salt water applications. Two rocker lugs furnished on male and swivel. Available in 1-1/2", 1-3/4", 2-1/2", 3", 3x2-1/2", and 4". Cast pin lug available in 1-1/2" and 2-1/2". Machined pin lug available in 1-3/4", 2-1/2", 3", 3x2-1/2", and 4".



B+15

B+25

## A+ Hard Suction Hose Couplings

Long Handle Female, Rocker Lug Male.

All sizes, sets or females are available in any combination. Hardcoated on 6061-T6 extruded aircraft aluminum alloy.

- A+119 Series: Female only suction hose couplings with long handles. From 2-1/2" to 6". Rings and gaskets included.
- A+1299 Series: Complete sets including long handle female and rocker lug male. From 2-1/2" to 6". Rings and gaskets included.



## Expansion Ring Hard Suction Couplings

A+1399

Designed for 4", 5", and 6" lightweight, flexible, spiral, PVC suction hose. Complete with rings and gaskets. Available in hardcoat. Also available in Storz Coupling.

## Field-Attachable Hard Suction Couplings

Now available in ACTION Storz

AL+1399

Designed for 4", 5", 6" and 8" lightweight, flexible, spiral, PVC suction hose. Complete with collars. See page 6 for Storz version.



## Extruded Fire Hose Soft Suction Couplings

A+1980

Male and female sets with rocker lugs. 2-1/2" to 6". Hardcoated finish on 6061-T6 aircraft aluminum alloy. Weight is one-third and three times as strong as brass. Comes complete with rings and gaskets. All gaskets are lathe cut and expansion rings are 85-15 brass. Also available female only or male only.



## Collar Type Soft Suction Couplings

AL-Series

Threaded coupling with 3-piece collar for rubber covered or double jacket hose. Hardcoated, durable, rocker lug female, rocker lug male. For soft suction hose only. Field attachable. Provide thread and hose manufacturer. Available in 4", 5", 6", and 8".



## Long Handled Collar Type Soft Suction Couplings

AL-LH Series

Threaded coupling with 3-piece collar for rubber covered, or double jacket hose. Hardcoated, durable, long handled female, rocker lug male. For soft suction hose only. Field attachable. Provide thread and hose manufacturer. Available in 4", 5", and 6".



## Booster Hose Coupling

Available in 6061-T6 Aluminum and CDA 360A Brass

Hole type with threaded insert into hose waterway. For use on rubber type non-collapsible hose. Available in 1".



## Cam Lock Coupling

Also known as cam and groove, snow couplings or quick-disconnect couplings. Two-part design for expansion ring couplings. The body of the coupling is made from hard-anodized, extruded 6061-T6 aluminum, and the body of the cam and groove adapter is made from 356-T6 aluminum with investment stainless steel arms and pull rings. Expansion ring couplings cannot be used in the transportation or distribution of fuel due to copper or copper alloy content in the expansion rings.



See our website for specials, more info, & new products [www.actioncoupling.com](http://www.actioncoupling.com) | 1-800-327-2779

LIGHTWEIGHT COUPLINGS

## Cam Lock Adapters



Cam lock adapters are two-part style to offer greater flexibility and quicker delivery. Also known as cam and groove, these lightweight fittings are great for any application. We offer a wide range of threads for adapters.

## In-Line Tees



Place these in-line tees anywhere to provide supplemental water outlets between lengths. Comes in a multitude of combinations and designed to meet your needs. The connection is threaded so that it can be easily serviced and if desired, a different connection put in place. Material is 6061-T6 extruded aluminum with the same hard-anodizing that you have come to depend on to protect your investment. Call us with your special application today.

## Water Curtain



Protect surrounding structures with a wall of water. Fully adjustable shutter lets you regulate how much water you dedicate to this function. Durable construction using 6061-T6 aluminum that has been hard-anodized. Available in 1-1/2" and 2-1/2" sizes.

## Threaded Lightweight Elbow



30° and 45° threaded, lightweight elbows. Available in any thread and may be specified as increasers or reducers. Rocker lug on female. Long handle female and double swivel female also available. Available in 1-1/2" through 6" sizes.

# ACE LIGHTWEIGHT ADAPTERS

Made from hardcoated extruded 6061-T6 lightweight aircraft aluminum alloy. Swivels on adapter are attached with a piston ring, stainless balls, or roller bearings. No roll-over or still threads are ever used to attach swivels. All adapters are available in hardcoat or chrome.



### AA+122

Used to adapt a hose to a different size nozzle.



### AA+153RL

Rocker lug swivel female to rocker lug rigid female adapter.



### AA+135

Double swiveling female adapter, with rocker lug, for changing from male thread to swiveling female.



### AA+154

Long handle swiveling female to rocker lug male adapter.



### AA+136

Male adapter, with rocker lug, for changing from female to male.



### AA+154RL

Rocker lug swiveling female to rocker lug male adapter.



### AA+137

Rigid female to male adapter with rocker lug.



### AA+156

Rigid long handle female to male adapter.



### AA+153

Long handle swivel female to rocker lug rigid female adapter.



### AA+157

Long handle double female adapter, swiveling both ends.

# All-Weather Gauges

## Line Gauge

For testing static pressure in nozzles or hose. Rocker lug. Sizes 1" to 3". Equipped with 300 lb. glycerine filled gauge. Body is made of hardcoated 6061-T6 aluminum alloy. Chrome finish also available.



## Protected Line Gauge

Made for standpipe use, for testing static pressure with fully enclosed gauge to protect against damage. Rocker lug. Available in any thread. Glycerine filled gauge registers 0 to 300 lbs. Sizes 1-1/2" and 2-1/2". Gauge body is made from hardcoated 6061-T6 aluminum alloy. Chrome finish available.



## Cap Gauge

Used to test static pressure on trucks and hydrants. Rocker lug. Sizes 1-1/2" to 3-1/2". Swiveling available with any thread. Glycerine filled gauge registers 0 to 300 lbs. Body is made of hardcoated 6061-T6 aluminum alloy. Chrome finish available. Comes complete with bleeder valve.



## Caps & Plugs



### Two-Part Cap

1" To 6". Rocker lugs. Available with or without 12" stainless steel chain. Made of extruded 6061-T6 aircraft aluminum alloy. Hardcoat or chrome finish. Also available with long handles in sizes 2-1/2" to 6".



### Solid One-Piece Cap

1" To 6". Solid design commonly used for test tables. Available with or without 12" stainless steel chain. Made of extruded 6061-T6 aircraft aluminum alloy. Hardcoat or chrome finish. Also available with long handles in sizes 2-1/2" to 6".



### One-Piece Plugs

1" To 6". Rocker lug. Available with or without 12" stainless steel chain. Made of extruded 6061-T6 aircraft aluminum alloy. Hardcoat or chrome finish.

# Acucoat

Available on most products

Protect and identify your couplings and adapters with a wide range of colors. This process is applied over the hardcoated surface to provide a long-lasting and durable surface that you will come to depend upon. We coat only the outside exposed body of the union so as not to interfere with bearing surfaces and thread integrity.



GAUGES, CAPS & PLUGS  
See our website for specials, more info, & new products [www.actioncoupling.com](http://www.actioncoupling.com) | 1-800-327-2779

## Self-Locking Storz Couplings

### A+ASAL Series Storz Collar-Type Couplings

Made from 6061-T6 billet aluminum and proudly manufactured in our facility. Our Storz Collar-Type Couplings are self-locking and field-attachable.



**Double Jacket** couplings (*left*) are heavy duty hard-coated. **Single Jacket** couplings (*right*) come in an innovative design with a burnished finish.



### Storz Expansion Ring Coupling

Available in 1-1/2" to 6" Storz and various bowl sizes. Swiveling only. All Storz fittings are lightweight 6061 aluminum forging and the body of the coupling is 6061-T6 aluminum extrusion.

*Inquire about your bowl size today.*



### Storz Conversion Elbows

2-1/2" to 6" threaded, male or female, rigid or swiveling, available in 2-1/2", 4", 5", and 6". The body is available in hardcoat or chrome. Also available as threaded male or female to Storz, or as Storz to Storz. Available as a 30 or 45 degree angle.



### Storz Spanners

Four cast Storz spanners are held at instant readiness on an aluminum alloy holder. Holder resists corrosion and abrasion. Long-lasting stainless steel springs.



### Storz Adapters

1" to 6" threaded male or female. Available as rigid or swivel. 1" to 6" Storz. Continuous swivel available on 4", 5" and 6" Storz. The body available in hardcoat or chrome.

*Rust-proof locks included.*



### Metal Face Storz Adapters

Permanent mount Storz adapter for hydrant use. Instead of a standard Storz gasket, this adapter utilizes a flat, metal surface that the gasket of the mating connection seals onto.



### Storz Cap

1" to 6" sizes available. Complete with locks on 4" and above. 1" through 3" come with chain, 4" and larger come with cable.



### Storz Field-Attachable Coupling

**ALS-1399** Available in 4", 5", and 6". Designed to be field-attachable, for lightweight, flexible, Spiral Hard Suction hose. Hardcoated. Complete with collars and locks.

Note: Currently small diameter storz forged heads are sourced from AWG Germany and our 4", 5", & 6" are manufactured in house from T-6061 aluminum extrusions.



## Dry Hydrant Systems

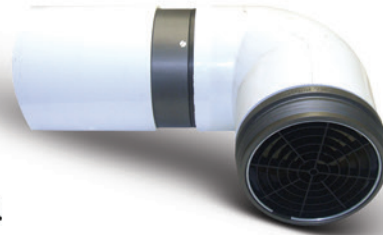
Can be assembled by fire departments

Metal parts are 6061-T6 aircraft aluminum alloy with hardcoated finish. PVC strainer body is made of 6" diameter heavy-duty schedule 40 pipe, drilled with 3/8" diameter holes. Our instructions make installation easy. A great value for the money in firefighting power. Each individual dry hydrant component can be purchased separately depending on your individual needs.



## Continuous Swivel Dry Hydrant

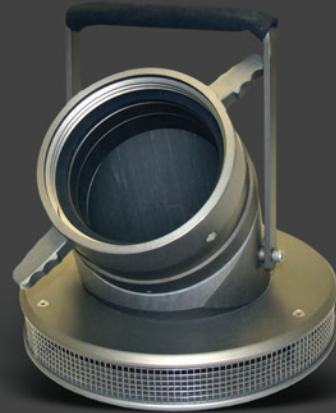
Never worry about how you pull up to your dry hydrant again. This rugged design has 360 degrees of rotation and is ringed axially and radially to prevent eventual leaks due to hose weight problems. Easily installed in line with new, or existing dry hydrants. Made from 6061-T6 extruded aluminum that is hardcoated to black luster.



## Low Level Strainer

A+LL

Our Power-Flow Low-Level Strainer is essential for pumpers over 1200 gpm and delivers the maximum water available. A 45 degree elbow with a constant swiveling collar enables the strainer to sit flush in a porta tank. The strainer is made of hardcoated extruded 6061-T6 alloy. Rounded base design ensures you can't snag the sides or bottom of your porta tank. Comes in two elbow sizes (4-1/2" and 6" jumbo) to ensure you get the most water available, a big advantage over smaller elbow sizes which restrict water flow. The 4-1/2" drafts to 1.68" and the 6" drafts to 2" depth. Available connection sizes 2-1/2" through 6" long handled threads or with 4", 5", and 6" Storz. Please specify elbow size, thread or Storz size when ordering. Note: Connection size determines elbow size.



## Heavy-Duty Debris Barrel Strainer

Prevents debris and contamination from being transferred from sources such as ponds into holding tanks, tankers, etc. Extruded 6061-T6 aircraft aluminum alloy strainer with extruded aluminum fitting at hose inlet end. Includes eyelet. Available in sizes 2-1/2" to 6".

## Basket Strainer/Diffuser

Lightweight 6061-T6 aluminum body with rigid stainless steel mesh. Used for straining debris out of your suction line or for diffusing water out of a hydrant. Available in sizes 2-1/2" to 6".



## Sight Glass

This diverse product lets you see the quality and quantity of the water you are drafting. The sight glass can be placed on a dry hydrant system or at the intake on a truck. This product is made from lightweight high impact resistant acrylic tubing and 6061-T6 hardcoat aluminum. Available in sizes 1-1/2" to 6" with swivel female to male connections. Use for drafting purposes only.



## Power Jet Siphon

Unbeatable for moving water through suction hoses between portable tanks. Completely dependable venturi action. Tough, lightweight aluminum alloy body resists abrasion and corrosion. 1-1/2" inlet, any thread. Available in 4" to 6" discharge, specify outlet thread if other than NH. Hardcoat finish. Available with Storz.



See our website for specials, more info, & new products [www.actioncoupling.com](http://www.actioncoupling.com) | 1-800-327-2779

# DRY HYDRANTS & STRAINERS

# Repair & Replacement Parts

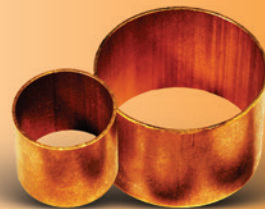
## Gaskets

Action gaskets are lathe cut. Use for swivel and replacement tail gaskets, 3/4" through 6". If ordering for tail gaskets, specify bowl size or hose O.D. and type of hose (single jacket, double jacket, rubber covered, or hard suction).



## Expansion Rings

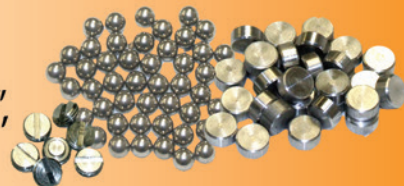
We use 85-15 seamless brass for all expansion rings to assure maximum expansion without danger of breakage. One edge is chamfered to lessen danger of cutting the hose liner.



Note: Copper for this product is no longer available in the U.S. and is sourced from a worldwide market.

## Bearings and Plugs

Stainless steel ball bearings for swivel attachment on select 2-1/2", 3", and 3-1/2" swivels. Roller bearings for 4" through 6" swivels. Plugs for bearing retainer.



## Mounting Plates

For mounting equipment on firefighting vehicles. Rigid male or swivel female with rocker lugs. Made of tough extruded, lightweight 6061-T6 aluminum alloy, hardcoated. 1" through 6". Storz mounting plate holds 4" or 5" Storz fittings. Hardcoat or Anolite finish.



## Ring Extractor

An indispensable tool for reusing couplings. Extracts expansion ring from hose bowl after hose has been severed. Chrome plated shaft with generous size hand grip.



## Combination Holder Set

Keep four steel combination Storz and Universal Spanners at instant readiness. Aluminum holder resists corrosion and abrasion. Long lasting stainless steel springs. Wrenches & Holder sold as a set or individually.



## Folding Spanner Wrench

We understand that compact design is essential in any tool that you might carry with you. For this reason we introduced our lightweight folding spanner wrench. Strong enough for the toughest connections and small enough to fit in any jacket pocket. Made from 356-T6 aluminum with stainless steel pivot.



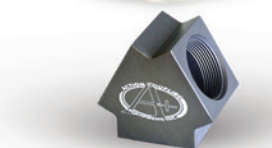
## Triple Holder Set

Cast aluminum holder keeps hydrant wrench and two universal spanners ready for instant access. Stainless steel springs and roll pin. Hydrant wrench is medium duty. Wrenches & Holder sold as a set or individually.



## Hose Mender

Use this handy connection to mend single jacket or double jacket hose with simple field attachable collars. Made of 6061-T6 aluminum in 4"-5" sizes.



## Simple Action "Y"

This flexible design allows you to configure your specific needs utilizing various adapters for your application. Available in 2-1/2" only.

## Action Manifold

This manifold utilizes a 2-1/2" trunk with six garden hose valves and is quite useful in a variety of applications. 6061-T6 aluminum and standard yellow brass valves are used to configure whatever outlet pattern you need.



## Action "Bear Claw" Manifold

Do you have needs for multiple lines for your hazmat station? Get a grip with Action's "Bear Claw" manifold. The "Bear Claw" manifold has five GHT (Garden Hose Thread) valve outlets and is supplied with a 1-1/2" or 2-1/2" inlet. Can be used at the end of a hose or directly to a hydrant. Maximum operation pressure of 125 psi. Made from 6061-T6 aluminum and brass valves.

## Hydrant Gate Valve



Lightweight anodized aluminum wedge seat Hydrant Gate Valve with a brass non-rising stem and crank handle. This high-strength valve is designed to exceed U.S. Forest Service FSS standards. It features a 2.5" NST female inlet and a 2.5" NST male outlet. The Hydrant Gate Valve is designed for either structural or wildland firefighting. Available in red. Made in the USA.

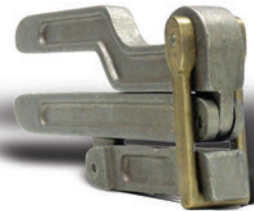
## Gated WYE Valve

Durable, lightweight WYE hose valves are constructed of high-quality aluminum with anodized hose threads built for rugged use. The valve opens and closes with a quarter turn. Polymer ball and seat/seal mechanism with o-rings provides a reliable seal and ease of operation at working pressures of 600 psi. These valves are made in the USA, and meet or exceed GSA requirements for use by the US Forest Service. This includes all raw materials and quality control procedures.



## Single Jacket Hose Clamp

The Hose Clamp is easy to operate while wearing gloves. It has an offset handle that enables more control by users. The Hose Clamp is made in the USA and is constructed from high quality cast aluminum and brass. It is built to be used with today's lightweight single jacket hoses in 1" and 1-1/2" sizes. When clamped on the hose, a locking device made of brass, locks the clamp safely in the closed position. The Hose Clamp also has a built-in spanner wrench for use on fittings 2-1/2" and smaller.



# GREEN MACHINE

## Action's Floor Model Coupling Machine

The **920 Series** includes the following features:

- Floor model, 2 HP single or three phase motor
- Hi/Low pump for high speed approach, low speed expand
- Quiet operation
- Two-way controls (left and right hand) with foot pedal optional
- Expansion units designed so that segment holders cannot be expanded when properly set up
- Cylinder 4" bore

The **930 Super Series** is designed for continuous duty and includes the same features as the 920 series with the following upgrades:

- 3 HP motor
- Forced air oil cooler and auto fan
- Three-way controls (left and right hand and foot controls)
- Cylinder 5" bore



## Expansion Units

Complete expansion unit assemblies for attaching 1" through 6" couplings. Note: different expansion unit assemblies must be ordered for specific use. Action expansion units are compatible with some other manufacturers' expanders. If ordering for machines other than Action Green Machines, specify manufacturer's make and model. Repair or replacement parts for Action expansion units may be ordered, including segments only, segment holders, drawbars, adjusting rings, segment springs, drawbar adapters, etc.



NEW & FEATURED PRODUCTS  
See our website for specials, more info, & new products [www.actioncoupling.com](http://www.actioncoupling.com) | 1-800-327-2779

# ACTION DELIVERS!

*"Action Delivers" is not just our motto. It is our commitment to provide our customers with the best service, quality, delivery and value. The majority of our products are manufactured in our facility, allowing us to provide rapid processing and shipping.*

*At Action Coupling and Equipment, we are committed to producing high quality couplings and adapters. We continually improve our products and the process by which they are made to provide you, our customers, the best quality and value for your money.*

*It is our goal to be the best at what we do, not only for the sake of our reputation, but for the safety of those who rely on our product.*

Action Coupling & Equipment, Inc.  
8248 County Road 245, P.O. Box 99  
Holmesville, Ohio  
44633

1-800-327-2779

[www.actioncoupling.com](http://www.actioncoupling.com)

[facebook.com/actioncoupling](https://facebook.com/actioncoupling)

