




carhartt
COMPANY GEAR™

2019 FLAME-RESISTANT CATALOG

1889

130 YEARS OF
OUTWORKING THEM ALL

2019



“ I BELIEVE THAT WHEN A MAN WEARS AN ARTICLE THAT I MANUFACTURE, HIS SELF-RESPECT IS INCREASED BECAUSE HE KNOWS THAT IT IS MADE BY AN HONEST MANUFACTURER, WHO IS HONEST WITH HIS EMPLOYEES. ”

HAMILTON CARHARTT



WE OUTFIT COMPANIES
THAT OUTWORK
THEM ALL



TABLE OF CONTENTS

FLAME-RESISTANT	5
LICENSEES	30
ADDITIONAL INFO	34



carhartt **FRC**

EMPOWERING THE WORKER HAS BEEN OUR FOCUS SINCE 1889, AND CARHARTT COMPANY GEAR IS THE NEW PINNACLE OF THAT ONGOING COMMITMENT

It is the dawn of a new era in our 130 years in the trenches of American progress. And it is the culmination of a mission spurred by you – to serve more workers and more industries than any workwear brand in history. We've rebuilt our service model from the ground up to ensure your needs aren't just met, they're anticipated. With innovative gear of uncompromising quality, built for the unique job roles of your trade, in the quantities you need. We have your company's back 24/7 with integrated solutions for every challenge and condition your workers face. **WE OUTFIT COMPANIES THAT OUTWORK THEM ALL.**

TECHNOLOGIES & INNOVATIONS

Our technologies are born of a simple premise: to Outwork Them All in the face of every weather condition and any challenge they face. For comfort in extreme heat to the bitter cold, for the mobility your people need to perform at their best, Carhartt delivers as only a 130-year veteran of industry can.

Carhartt Force® is not a fabric. Force is a collection of hard-working product attributes and consumer benefits. These attributes are engineered to wick sweat with FastDry® technology and fight odors to keep workers comfortable on the job. Also available in FR styles.



Outerwear for the coldest conditions with Wind Fighter™ technology to protect against the wind. The sherpa lining plus 3M™ Thinsulate™ Platinum Insulation FR keeps workers warm in the harshest cold conditions.



MADE WITH
3M THINSULATE™
Insulation / Isolant



Hardworking crews told us they wanted gear with more stretch and recovery - and we listened. The result was our revolutionary Full Swing® technology: a series of hardworking jackets built to give you greater range of motion.



Rain Defender® durable water repellent technology has your back all day, every day by forcing rain to bead up and roll right off. It makes our gear rain, mist and snow resistant. Available in FR styles.



Storm Defender® waterproof breathable technology is engineered to be dependably durable, waterproof, and breathable — so wet can't get in, but sweat can get out.



Looks traditional. Feels exceptional. Engineered to provide stretch without bulk, and every element moves with you so you can work easier.



FLAME RESISTANT

When danger's in the job description, Carhartt FR clothing is ready to serve. Built to meet NFPA 70E and NFPA 2112 performance requirements, our collection of flame-resistant shirts, pants, and outerwear for men, and apparel designed especially for women, works its hardest when conditions are at their worst. So your crew can Outwork Them All.



STAYS COOL & DRY WHEN CONDITIONS AREN'T

The hotter it gets, the harder these shirts work. Because Carhartt Force® FR gear combines over 130 years of hands-on experience with the mightiest heat-defying tech we've ever fit in a shirt. Featuring FastDry® sweat-wicking technology, plus odor-fighting abilities, so you don't have to worry about anything getting in the way of your work.

FASTDRY® TECHNOLOGY



Wicks sweat away from the body for instant evaporation

ODOR FIGHTING



Traps scent molecules and releases them in the wash

DUAL SAFETY



Meets both NFPA 70E and NFPA 2112 standards

LIGHTWEIGHT FABRIC



Keeps workers cool and their mobility unrestricted

WE OUTFIT COMPANIES THAT
OUTWORK THEM ALL



A FR FORCE COTTON HYBRID SHIRT

101698

- 6.75 oz, 100% cotton jersey
- Original fit
- Button-down collar with button closure
- Two chest pockets with button closure
- Triple-stitched main seams
- Imported

Style #/Color
101698-051/Light Gray
101698-250/Khaki
101698-410/Dark Navy
101698-465/Medium Blue

S	M	L	XL	2XL	3XL	4XL	
•	•	•	•	•	•	•	REGULAR
•	•	•	•	•	•	•	TALL

CAT 2 APPROXIMATE 8.9	051	250
	410	465



Force



B FR FORCE COTTON LONG-SLEEVE HENLEY

100237

- 6.75 oz, 100% cotton jersey
- Original fit
- Rib-knit henley collar and cuffs
- Durable left-chest pocket
- Imported

Style #/Color
100237-051/Light Gray
100237-250/Khaki
100237-410/Dark Navy
100237-465/Medium Blue

S	M	L	XL	2XL	3XL	4XL	
•	•	•	•	•	•	•	REGULAR
•	•	•	•	•	•	•	TALL

CAT 2 APPROXIMATE 8.9	051	250
	410	465



Force



C FR FORCE COTTON LONG-SLEEVE T-SHIRT

100235

- 6.75 oz, 100% cotton jersey
- Original fit
- Rib-knit crewneck collar and cuffs
- Durable left chest pocket
- Imported

Style #/Color
100235-051/Light Gray
100235-250/Khaki
100235-410/Dark Navy
100235-465/Medium Blue

S	M	L	XL	2XL	3XL	4XL	
•	•	•	•	•	•	•	REGULAR
•	•	•	•	•	•	•	TALL

CAT 2 APPROXIMATE 8.9	051	250
	410	465



Force



D WOMEN'S FR FORCE COTTON HYBRID SHIRT

102687

- 6.75 oz, 100% cotton jersey
- Slightly fitted
- Mesh side panel extends to back yoke for added stretch and comfort
- Triple-stitched main seams for durability
- Imported

Style #/Color
102687-250/Khaki
102687-410/Dark Navy
102687-465/Medium Blue

XS	S	M	L	XL	XXL
•	•	•	•	•	•

CAT 2 APPROXIMATE 8.9	250	410
	465	



Force

E WOMEN'S FR FORCE COTTON LONG-SLEEVE HENLEY

102686

- 6.75 oz, 100% cotton jersey
- Slightly fitted
- Rib-knit henley collar and cuffs
- Drop tail adds coverage
- Mesh side panel provides added stretch and comfort
- Imported

Style #/Color
102686-410/Dark Navy

XS	S	M	L	XL	XXL
•	•	•	•	•	•

CAT 2 APPROXIMATE 8.9	410
-----------------------------	-----



Force

F WOMEN'S FR FORCE COTTON LONG-SLEEVE CREWNECK T-SHIRT

102685

- 6.75 oz, 100% cotton jersey
- Slightly fitted
- Rib-knit crewneck collar and cuffs
- Drop tail adds coverage
- Mesh side panel provides added stretch and comfort
- Imported

Style #/Color
102685-250/Khaki
102685-410/Dark Navy

XS	S	M	L	XL	XXL
•	•	•	•	•	•

CAT 2 APPROXIMATE 8.9	250	410
-----------------------------	-----	-----



Force

G FR FORCE COTTON SHORT-SLEEVE T-SHIRT

100234

- 6.75 oz, 100% cotton jersey
- Rib-knit crewneck collar
- Durable left chest pocket
- Imported

Style #/Color
100234-051/Light Gray
100234-410/Dark Navy

S	M	L	XL	2XL	3XL	4XL	
•	•	•	•	•	•	•	REGULAR
•	•	•	•	•	•	•	TALL

CAT 2 APPROXIMATE 8.9	051	410
-----------------------------	-----	-----



Force



THE HOTTER IT GETS, THE HARDER IT WORKS

High temps and humidity are no match for the workforce that wears the Carhartt Force® FR T-shirt. Its FastDry® technology wicks sweat and fights odors so crews stay cool, dry, safe, and productive when things heat up. Long-lasting, lightweight 6-ounce, 93% cotton/7% Spandex FR jersey knit. Side-seamed construction minimizes twisting for maximum comfort.

A FR FORCE COTTON SHORT-SLEEVE T-SHIRT

102903

- 6 oz. knit, 93% cotton/7% Spandex
- Relaxed fit
- Stretchable, spandex-reinforced rib-knit crewneck
- Side-seamed construction minimizes twisting
- Carhartt FR and NFPA 2112/CAT 1 labels sewn on side seam
- Carhartt Force® fights stink and wicks away sweat to keep you cool, dry, and comfortable
- Meets the performance requirements of NFPA 70E and is UL® Classified to NFPA 2112
- Imported

Style #/Color
102903-051/Light Gray
102903-250/Khaki
102903-410/Dark Navy

S	M	L	XL	2XL	3XL	4XL	
•	•	•	•	•	•	•	REGULAR
•	•	•	•	•	•	•	TALL

051 250 410



B FR FORCE COTTON LONG-SLEEVE T-SHIRT

102904

- 6 oz. knit, 93% cotton/7% Spandex
- Relaxed fit
- Stretchable, spandex-reinforced rib-knit crewneck
- Side-seamed construction minimizes twisting
- Carhartt FR and NFPA 2112/CAT 1 labels sewn on side seam
- Carhartt Force® fights stink and wicks away sweat to keep you cool, dry, and comfortable
- Meets the performance requirements of NFPA 70E and is UL® Classified to NFPA 2112
- Imported

Style #/Color
102904-051/Light Gray
102904-250/Khaki
102904-410/Dark Navy

S	M	L	XL	2XL	3XL	4XL	
•	•	•	•	•	•	•	REGULAR
•	•	•	•	•	•	•	TALL

051 250 410



FR FORCE HIGH-VISIBILITY KNITS, ORIGINAL FIT

Long-lasting, 6.75-ounce, inherent FR pique knit, Carhartt Force® FastDry® technology wicks away sweat for comfort. Features Stain Breaker® technology, dark navy color-blocking in high-wear areas to hide dirt and 3M™ Scotchlite™ Reflective Material. Side-seamed construction to minimize twisting and maximize comfort on the job.

C FR HIGH-VISIBILITY FORCE LONG-SLEEVE T-SHIRT CLASS 3

102905

- 6.75 oz. pique knit, 48% modacrylic/37% lyocell/15% aramid
- Original fit
- Rib-knit collar and cuffs
- Durable left chest pocket
- Imported

Style #/Color
102905-323/Brite Lime

M	L	XL	2XL	3XL	4XL	
•	•	•	•	•	•	REGULAR
•	•	•	•	•	•	TALL

323



D FR HIGH-VISIBILITY FORCE HYBRID SHIRT CLASS 3

102843

- 6.75 oz. pique knit, 48% modacrylic/37% lyocell/15% aramid
- Original fit
- Extended sleeve plackets with two-button adjustable cuffs
- FR melamine buttons throughout
- Two chest pockets with button closure
- Triple-stitched main seams
- Imported

Style #/Color
102843-323/Brite Lime

M	L	XL	2XL	3XL	4XL	
•	•	•	•	•	•	REGULAR
•	•	•	•	•	•	TALL

323





A **FR LIGHTWEIGHT TWILL SHIRT**
FRS003

- 6 oz, FR twill: 88% cotton/ 12% high-tenacity nylon
- Original fit
- Adjustable cuffs with button closure
- Button-down collar
- Imported

Style #/Color
FRS003-DNY/Dark Navy
FRS003-GRY/Gray
FRS003-KHI/Khaki
FRS003-465/Medium Blue

S	M	L	XL	2XL	3XL	4XL	
•	•	•	•	•	•	•	REGULAR
•	•	•	•	•	•	•	TALL

CAT 2 <small>PROTECTIVE</small> 8.7	DNY	GRY
	KHI	465



A FR CLASSIC TWILL SHIRT

FRS160

- 7 oz, FR twill: 88% cotton/ 12% high-tenacity nylon
- Original fit
- Adjustable cuffs with button closure
- Button-down collar
- Imported

Style #/Color
FRS160-DNY/Dark Navy
FRS160-GRY/Gray
FRS160-KHI/Khaki
FRS160-MBL/Medium Blue

S	M	L	XL	2XL	3XL	4XL	
•	•	•	•	•	•	•	REGULAR
•	•	•	•	•	•	•	TALL

CAT 2
APPROXIMATE
8.6

DNY	GRY
KHI	MBL

NFFPA 70E
COMPLIANT

NFFPA 2112
COMPLIANT



B WOMEN'S FR RUGGED FLEX® TWILL SHIRT

102459

- 7 oz, FR twill: 87% cotton/ 7% high-tenacity nylon/ 5% polyester/1% spandex
- Relaxed fit
- Rugged Flex® durable stretch technology for ease of movement
- Adjustable cuffs with button closure
- Button-down collar
- Imported

Style #/Color
102459-250/Khaki
102459-410/Dark Navy

XS	S	M	L	XL	XXL
•	•	•	•	•	•

CAT 2
APPROXIMATE
8.7

250	410
-----	-----

NFFPA 70E
COMPLIANT

NFFPA 2112
COMPLIANT

RUGGED FLEX



C FR CANVAS SHIRT JAC

100432

- 8.5 oz, FR canvas: 88% cotton/12% high-tenacity nylon
- Snap front
- Original fit
- 7 oz, FR twill lining
- Imported

Style #/Color
100432-001/Black
100432-201/Dark Brown
100432-316/Moss

S	M	L	XL	2XL	3XL	4XL	
•	•	•	•	•	•	•	REGULAR
•	•	•	•	•	•	•	TALL

CAT 3
APPROXIMATE
34

001	201
316	

NFFPA 70E
COMPLIANT

NFFPA 2112
COMPLIANT



D FR FULL SWING® QUICK DUCK® SHIRT JAC

102682

- 8.5 oz, FR canvas: 88% cotton/12% high-tenacity nylon
- Mighty Back™ bi-swing between shoulders for instant recovery
- Flex Elbow® for less restriction
- Adjustable, two-snap cuffs
- 7 oz, FR twill lining
- Rain Defender® durable water repellent
- Two inside pockets
- Utility band at left chest
- Two lower-front welt pockets
- Locker loop facilitates hanging

Style #/Color
102682-410/Dark Navy

S	M	L	XL	2XL	3XL	4XL	
•	•	•	•	•	•	•	REGULAR
•	•	•	•	•	•	•	TALL

CAT 2
APPROXIMATE
14

410

NFFPA 70E
COMPLIANT

NFFPA 2112
COMPLIANT

QUICK DUCK **FULL SWING**



PUT THE PROTECTIVE POWER OF CARHARTT FR OPTIMUM BLEND FABRIC TO WORK

Engineered to maximize protection and comfort while minimizing the effects of rain, Carhartt's new FR sweatshirts with optimum blend fabric provide premium warmth & breathability, making it an ideal outer layer in cool conditions, and an unbeatable layer of defense against the cold.



MODACRYLIC



Comfort, Softness with Higher Loft

LYOCELL



Strong, breathable and optimized to improve moisture transport



ARAMID



High durability with increased abrasion resistance

- Exclusive optimum blend in a 13 oz fabric delivers ultimate weather-resistant warmth and comfort
- Rain Defender® water-repellent technology sheds moisture
- TrueColor™ Technology prevents fading of colors, wash after wash
- 4-pocket design on all zip styles, featuring interior pocket for extra storage

carharttFR



A WOMEN'S FR HEAVYWEIGHT ZIP FRONT HOODED SWEATSHIRT 102690

- Heavyweight 13 oz, FR fleece: 56% modacrylic/34% Lyocell/10% Aramid blend with Rain Defender® durable water repellent (DWR) to keep you dry and moving in light rain
- Stretchable, spandex-reinforced rib-knit cuffs and waistband
- Attached three-piece hood with adjustable FR drawcord closure
- Vislon® front zipper with Nomex® FR zipper tape
- Two front hand-warmer pockets with interior media pocket
- Inside patch pocket with hook-and-loop closure
- Carhartt FR and NFPA 2112/CAT 2 labels sewn on left pocket
- Meets the performance requirements of NFPA 70E and is UL® Classified to NFPA 2112
- Imported

Style #/Color
102690-410/Dark Navy

XS	S	M	L	XL	XXL
•	•	•	•	•	•



B FR HEAVYWEIGHT HOODED SWEATSHIRT 102907

- Heavyweight 13 oz, FR fleece: 56% modacrylic/34% Lyocell/10% Aramid blend with Rain Defender® durable water repellent (DWR) to keep you dry and moving in light rain
- Stretchable, spandex-reinforced rib-knit cuffs and waistband
- Attached three-piece hood with adjustable FR drawcord closure
- Front hand-warmer pocket with interior media pocket
- Carhartt FR and NFPA 2112/CAT 2 labels sewn on pocket
- Meets the performance requirements of NFPA 70E and is UL® Classified to NFPA 2112
- Imported

Style #/Color
102907-410/Dark Navy

S	M	L	XL	2XL	3XL	4XL	REGULAR
•	•	•	•	•	•	•	•
•	•	•	•	•	•	•	TALL



C FR HEAVYWEIGHT ZIP FRONT HOODED SWEATSHIRT 102908

- Heavyweight 13 oz, FR fleece: 56% modacrylic/34% Lyocell/10% Aramid blend with Rain Defender® durable water repellent (DWR) to keep you dry and moving in light rain
- Stretchable, spandex-reinforced rib-knit cuffs and waistband
- Attached three-piece hood with adjustable FR drawcord closure
- Vislon® front zipper with Nomex® FR zipper tape
- Two front hand-warmer pockets with interior media pocket
- Inside patch pocket with hook-and-loop closure
- Carhartt FR and NFPA 2112/CAT 2 labels sewn on left pocket
- Meets the performance requirements of NFPA 70E and is UL® Classified to NFPA 2112
- Imported

Style #/Color
102908-410/Dark Navy

S	M	L	XL	2XL	3XL	4XL	REGULAR
•	•	•	•	•	•	•	•
•	•	•	•	•	•	•	TALL



A FR CANVAS CARGO PANT

FRB240

- Midweight 8.5 oz, FR canvas: 88% cotton/12% high-tenacity nylon
- Loose fit
- Generous fit through seat and thigh with the most room to move
- Sits slightly above the waist
- Two large side cargo pockets with pen slots
- Two reinforced back pockets
- Imported

Style #/Color
FRB240-BLK/Black
FRB240-DNY/Dark Navy
FRB240-GKH/Golden Khaki

		WAIST															
		30	31	32	33	34	35	36	38	40	42	44	46	48	50	52	54
INSEAM	30																
	32																
	34																
	36																



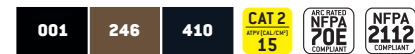
B FR WASHED DUCK WORK DUNGAREE

100791

- 11 oz, FR duck: 88% cotton/12% high-tenacity nylon
- Loose fit
- Generous fit through seat and thigh with the most room to move
- Sits at the waist
- Left leg utility band
- Imported

Style #/Color
100791-001/Black
100791-246/Mid Brown
100791-410/Dark Navy

		WAIST															
		30	31	32	33	34	35	36	38	40	42	44	46	48	50	52	54
INSEAM	30																
	32																
	34																
	36																



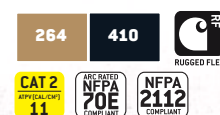
C WOMEN'S FR RUGGED FLEX® CANVAS PANT – ORIGINAL FIT

102689

- 9 oz, FR canvas: 98% cotton/2% spandex
- Original fit
- Rugged Flex® durable stretch technology for ease of movement
- Mid-front rise, sits just below the waist
- Higher back for added coverage
- Two reinforced back pockets
- Leg openings fit over work boots
- Imported

Style #/Color
102689-264/Golden Khaki
102689-410/Dark Navy

		WAIST									
		2	4	6	8	10	12	14	16	18	20
INSEAM	SHORT 30										
	REGULAR 32										
	TALL 34										



D FR MIDWEIGHT CANVAS PANT – LOOSE FIT

FRB159

- Midweight 8.5 oz, FR canvas: 88% cotton/12% high-tenacity nylon
- Loose fit
- Generous fit through seat and thigh with the most room to move
- Sits slightly above the waist
- Cell phone pocket and multiple utility pockets on right leg
- Two reinforced back pockets
- Imported

Style #/Color
FRB159-DNY/Dark Navy
FRB159-GKH/Golden Khaki
FRB159-MOS/Moss

		WAIST															
		30	31	32	33	34	35	36	38	40	42	44	46	48	50	52	54
INSEAM	30																
	32																
	34																
	36																



E FR SIGNATURE DENIM JEAN – RELAXED FIT

FRB100

- 11.75 oz, FR denim: 100% cotton
- Relaxed fit
- Comfortable fit through seat and thigh with more room to move
- Sits above the waist
- Two reinforced back pockets
- Imported

Style #/Color
FRB100-DNM/Denim

		WAIST															
		30	31	32	33	34	35	36	38	40	42	44	46	48	50	52	54
INSEAM	30																
	32																
	34																
	36																



F FR SIGNATURE DENIM DUNGAREE

FRB13

- 11.75 oz, FR denim: 100% cotton
- Loose fit
- Generous fit through seat and thigh with the most room to move
- Sits slightly above the waist
- Multiple utility pockets
- Imported

Style #/Color
FRB13-DNM/Denim
FRB13-401/Classic Dark

		WAIST															
		30	31	32	33	34	35	36	38	40	42	44	46	48	50	52	54
INSEAM	30																
	32																
	34																
	36																



G FR UTILITY JEAN – RELAXED FIT

FRB004

- 14.75 oz, FR denim: 100% cotton
- Relaxed fit
- Comfortable fit through seat and thigh with more room to move
- Sits at the waist
- Two reinforced back pockets
- Imported

Style #/Color
FRB004-MDS/Midstone

		WAIST															
		30	31	32	33	34	35	36	38	40	42	44	46	48	50	52	54
INSEAM	30																
	32																
	34																
	36																



BORN TO WORK BUILT TO STRETCH

HIGH MOBILITY AND PRODUCTIVITY

It's Rugged Flex® technology offers 4-way stretch for ease of movement in relaxed fit. Either one you choose, it's the latest in workwear technology with Carhartt's work ethic built in.



Stretch technology for ease of movement

Rugged Flex® garments must meet the Carhartt's defined standards for stretch, recovery, and durability, so when you put on a Rugged Flex® garment, you know it won't let you down. You'll find Rugged Flex® in shirts, pants, and jackets because you need gear that helps you move, not gear that holds you back.

**WE OUTFIT COMPANIES THAT
OUTWORK THEM ALL**

carharttFR



FR MEN'S & WOMEN'S JEANS

Regardless of fit, this durable denim more than fills the need for a trustworthy pair of FR jeans. Featuring an arc-resistant button closure at the waist and a brass zipper fly with Nomex® FR zipper tape.

A FR RUGGED FLEX® JEAN – STRAIGHT FIT

101814

- 12.5 oz, 99% cotton/1% spandex FR denim
- Straight fit
- Rugged Flex® durable stretch technology for ease of movement
- Straight fit sits slightly below the waist
- Closer to the body fit through seat and thigh with room to move
- Slim seat and thigh
- Imported

Style #/Color
101814-972/Deep Indigo Wash

		WAIST															
		30	31	32	33	34	35	36	38	40	42	44	46	48	50	52	54
INSEAM	30																
	32																
	34																
	36																



972



B WOMEN'S FR RUGGED FLEX® JEAN – ORIGINAL FIT

102688

- 11 oz, 69% cotton/30% modacrylic/1% elastane
- Original fit
- Rugged Flex® durable stretch technology for ease of movement
- Mid-front rise; sits just below the waist
- Higher back rise for added coverage
- Leg openings fit over work boots
- Imported

Style #/Color
102688-417/Premium Dark

		WAIST									
		2	4	6	8	10	12	14	16	18	20
INSEAM	SHORT 30										
	REGULAR 32										
	TALL 34										



417



A FR QUICK DUCK® BIB OVERALLS – QUILT-LINED

102691

- Insulated with 150g 3M™ Thinsulate™ Platinum Insulation FR
- 8.5 oz FR Quick Duck®, 88% cotton, 12% nylon
- Bib multi-pocket with zipper closure
- Multiple tool and utility pockets
- Chap-style double front
- Ankle-to-above knee brass leg zippers
- Imported

Style #/Color
102691-211/Carhartt Brown
102691-410/Dark Navy

WAIST		30	32	34	36	38	40	42	44	46	48	50	52	54
INSEAM	28													
	30													
	32													
	34													



B FR DUCK BIB OVERALLS – QUILT-LINED

101626

- Chap-style double front
- Multiple tool and utility pockets
- FR elastic suspenders and FR buckles
- Ankle-to-thigh brass leg zippers
- Imported

Style #/Color
101626-001/Black
101626-211/Carhartt Brown
101626-410/Dark Navy

WAIST		30	32	34	36	38	40	42	44	46	48	50	52	54
INSEAM	28													
	30													
	32													
	34													



C FLAME-RESISTANT DUCK BIB OVERALLS – UNLINED

101627

- Chap-style double front
- Multiple tool and utility pockets
- FR elastic suspenders and FR buckles
- Ankle-to-above knee brass leg zippers
- Imported

Style #/Color
101627-001/Black
101627-211/Carhartt Brown
101627-410/Dark Navy

WAIST		30	32	34	36	38	40	42	44	46	48	50	52	54
INSEAM	28													
	30													
	32													
	34													



D NEW WOMEN'S FR RUGGED FLEX® COVERALLS

102450

- 7 oz, FR twill: 87% cotton/ 7% high-tenacity nylon/5% polyester/1% elastane
- Rugged Flex® durable stretch technology for ease of movement
- Two side-entry pass-through pockets with snap closures
- Right-side tool and utility pocket
- Left-sleeve upper arm pocket
- Leg openings fit over work boots
- Imported

Style #/Color
102450-410/Dark Navy

		XS	S	M	L	XL	XXL
INSEAM	SHORT 30						
	REGULAR 32						
	TALL 34						



E FR TRADITIONAL TWILL COVERALLS

101017

- 9 oz, FR twill: 100% cotton
- Spread collar
- Utility band on left chest
- Utility pocket on right leg
- Leg openings fit over boots for easy on and off
- Imported

Style #/Color
101017-033/Gray
101017-250ic/Khaki
101017-410/Dark Navy

CHEST		34	36	38	40	42	44	46	48	50	52	54	56	58	60
	SHORT														
	REGULAR														
	TALL														





THE PROTECTION
YOUR PEOPLE NEED
THE BRAND THEY WANT



FR DUCK ACTIVE JAC

These Duck Jackets and vests combine the water-repellent, wind resistant, rugged durability of our famous Carhartt Duck fabric, with the added protection of flame resistant FR technology. Lined for added warmth to keep productivity high and cold out.



A FR DUCK BOMBER JACKET – QUILT-LINED 101623

- 13 oz, 100% cotton FR duck
- Nomex® FR rib-knit cuffs and waistband
- Imported

Style #/Color
101623-211/Carhartt Brown
101623-410/Dark Navy

S	M	L	XL	2XL	3XL	4XL	5XL
•	•	•	•	•	•	•	•
•	•	•	•	•	•	•	•

REGULAR
TALL



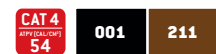
B FR DUCK ACTIVE JAC – QUILT-LINED 101621

- 13 oz, 100% cotton duck
- Nomex® FR rib-knit cuffs and waistband
- Attached quilt-lined hood with Nomex® FR drawcord
- Imported

Style #/Color
101621-001/Black
101621-211/Carhartt Brown
101621-410/Dark Navy

S	M	L	XL	2XL	3XL	4XL
•	•	•	•	•	•	•
•	•	•	•	•	•	•

REGULAR
TALL



C FR DUCK TRADITIONAL COAT – QUILT-LINED 101618

- 13 oz, 100% cotton FR duck
- Rib-knit storm cuffs
- FR inside-waist adjustable drawcord
- Two inside patch pockets with FR hook-and-loop closures
- Imported

Style #/Color
101618-001/Black
101618-211/Carhartt Brown
101618-410/Dark Navy

S	M	L	XL	2XL	3XL	4XL
•	•	•	•	•	•	•
•	•	•	•	•	•	•

REGULAR
TALL



D FR MIDWEIGHT CANVAS ACTIVE JAC – QUILT-LINED 101622

- 8.5 oz, FR canvas: 88% cotton/ 12% high-tenacity nylon
- Attached quilt-lined hood with adjustable Nomex® FR drawcord
- Nomex® rib-knit cuffs and waistband
- Imported

Style #/Color
101622-211/Carhartt Brown
101622-410/Dark Navy

S	M	L	XL	2XL	3XL	4XL
•	•	•	•	•	•	•
•	•	•	•	•	•	•

REGULAR
TALL



E FR MOCK-NECK VEST 101029

- 8.5 oz, FR canvas: 88% cotton/ 12% FR nylon
- FR sherpa lining
- Drop tail
- Imported

Style #/Color
101029-211/Carhartt Brown
101029-410/Dark Navy

S	M	L	XL	2XL	3XL	4XL
•	•	•	•	•	•	•
•	•	•	•	•	•	•

REGULAR
TALL



INCREASE MOBILITY, UNLEASH PRODUCTIVITY

Move like you mean it with our flexible Full Swing® apparel. Engineered to give your crew the range of motion to dominate any task, it features advancements like Mighty Back®, Freedom Gusset® and Flex Elbow® — all designed to offer greater fit and flexibility where it's needed most. It's the same legendary Carhartt protection and durability, now equipped with empowering freedom of movement.

FREEDOM GUSSET®



Stretch panels under the arms for ease of movement

FLEX ELBOW®



More room to move in the elbow

DUAL SAFETY



Meets both NFPA 70E and NFPA 2112 standards

MIGHTY BACK®



Stretch paneling between your shoulders for easy recovery



Insulated



Rain Defender®



Quick Duck®

WE OUTFIT COMPANIES THAT
OUTWORK THEM ALL



A FR FULL SWING® QUICK DUCK® JACKET 102179

- 8.5 oz FR Quick Duck®, 88% cotton, 12% nylon
- 7 oz, FR twill lining
- Left-chest map pocket with zipper closure
- Two lower-front pockets with zipper closures
- Imported

Style #/Color
102179-211/Carhartt Brown
102179-410/Dark Navy

S	M	L	XL	2XL	3XL	4XL	
•	•	•	•	•	•	•	REGULAR
•	•	•	•	•	•	•	TALL



B FR FULL SWING® QUICK DUCK® LANYARD ACCESS JACKET 102692

- 8.5 oz FR Quick Duck®, 88% cotton, 12% nylon
- Insulated with 150g 3M™ Thinsulate™ Platinum Insulation FR
- Harness D-ring access port with flap on center back (inset photo)
- Left-chest map pocket with zipper closure
- Two lower-front pockets
- Imported

Style #/Color
102692-211/Carhartt Brown
102692-410/Dark Navy

S	M	L	XL	2XL	3XL	4XL	
•	•	•	•	•	•	•	REGULAR
•	•	•	•	•	•	•	TALL



FLEXIBILITY AND WARMTH ARE POWER

Improve your crew's range of motion and results with our Flame-Resistant Full Swing® Quick Duck® Coat. Purpose-built to stretch, reach and flex to the heights of productivity. All while delivering the unbeatable warmth of 150-gram 3M™ Thinsulate™ and the extreme protection of our Quick Duck® shell with Rain Defender®.

C FR FULL SWING® QUICK DUCK® COAT 102182

- 8.5 oz FR Quick Duck®, 88% cotton, 12% nylon
- Insulated with 150g 3M™ Thinsulate™ Platinum Insulation FR
- Two chest pockets with flaps and snap closures
- Two lower-front pockets with snap closures
- Imported

Style #/Color
102182-211/Carhartt Brown
102182-410/Dark Navy

S	M	L	XL	2XL	3XL	4XL	
•	•	•	•	•	•	•	REGULAR
•	•	•	•	•	•	•	TALL



D WOMEN'S FR FULL SWING® QUICK DUCK® JACKET – SHERPA-LINED 102694

- 8.5 oz FR Quick Duck®, 88% cotton, 12% nylon
- Insulated with 150g 3M™ Thinsulate™ Platinum Insulation FR
- FR Sherpa Lining
- Two lower-front pockets with zipper closure
- Imported

Style #/Color
102694-211/Carhartt Brown
102694-410/Dark Navy

XS	S	M	L	XL	XXL	
•	•	•	•	•	•	





A FR KNIT WATCH HAT
102869

- 55% modacrylic/45% cotton, stretchable rib-knit
- Carhartt FR label sewn on front
- Meets the performance requirements of NFPA 70E
- Imported

Style #/Color
102869-410/Dark Navy

ONE SIZE FITS ALL



B FR DUCK HOOD – QUILT-LINED
FRA265

- 13 oz 100% cotton duck
- Three-piece hood design for better fit
- Chin protector with FR hook-and-loop closure
- Adjustable Nomex® FR drawcord
- Arc-resistant snaps for attachment to FR outerwear only
- NFPA 70E compliant only
- Compatible with: 101618, 101623
- Imported

Style #/Color
FRA265-BLK/Black
FRA265-BRN/Carhartt Brown
FRA265-DNY/Dark Navy

ONE SIZE FITS ALL



C FR QUICK DUCK® HOOD
102183

- 8.5 oz FR Quick Duck®, 88% cotton/12% nylon
- Three-piece hood design for better fit
- Adjustable Nomex® FR drawcord with secure nylon drawcord lock
- NFPA 70E compliant only
- Compatible to snap onto: 102182, 102692
- Imported

Style #/Color
102183-211/Carhartt Brown
102183-410/Dark Navy

ONE SIZE FITS ALL





LICENSEES

From rugged boots to safety glasses, and everything between, Carhartt licensed products help keep your hardworking crew safe on the job. With head-to-toe protection to Outwork Them All.

LICENSEES

Carhartt licenses the manufacture and marketing of certain products to other companies. For sales information, marketing materials, and product images for Carhartt-licensed products, please contact the company representatives listed below.

CARHARTT BAGS

Born with a mission to create the strongest, most durable, and dependable gear transportation and storage bags, 5 Horizons and Carhartt joined forces in 2014 to launch Carhartt Bags, immediately raising the standard for rugged, reliable jobsite performance. Constructed using the highest quality, premium-strength fabrics and fortified by the toughness of triple-needle stitched reinforcement, they come equipped with weather-defying Carhartt Rain Defender® technology — and the legendary work ethic to Outwork Them All.

5 HORIZONS GROUP

5 Horizons Contact

Lisa Giess
Email: lisa.giess@5horizonsgroup.com
Phone: 855-670-9930 x126

CARHARTT GLOVES

To empower the hardest-working hands in America, Carhartt and Gordini are proud to offer a full selection of the toughest, most weather- and work-ready gloves on the market. Partners in protection since 2010, our gloves feature patented C-Grip® Technology for superior grip, durability, and dexterity on the job, and strategic padding and reinforcement to prevent blisters and fatigue. Built with breathable, seamless knit comfort, they're available with Carhartt FastDry® and Storm Defender® weather-resistant technology.

GORDINI

Gordini Contact

Stefan Bumbeck
Email: stefan_bumbeck@gordini.com
Phone: 802-879-5211 x208



CARHARTT FOOTWEAR

For those who demand premium all-day comfort, support, and protection from their boots, plus the long-lasting, rugged durability to Outwork Them All, Carhartt Footwear is tested tough, and proven to excel and endure in the most extreme working conditions. Offering a wide range of styles and materials to meet your workers' needs, they are available with safety features including ASTM 2414-11-certified puncture resistance, electrical hazard protection from incidental contact, and heel guards to provide ankle stability with side impact coverage. Wherever the jobsite — whatever it takes — these high performance, protective boots have you covered.



Black Diamond Contact

Jarrod Beard
Email: jbeard@bdboots.com
Phone: 614-886-2504

CARHARTT EYEWEAR

Backed by the combined strength of industry-leading safety eyewear experts, Pyramex, and the renowned rugged reliability of Carhartt, we're proud to offer the new Carhartt Safety Eyewear range. Featuring six distinct styles designed and manufactured with the user in mind, Carhartt Safety Eyewear is purpose-built to stand up to the harshest demands of today's workforce. Whether on the assembly line or in the field, durable dependability keeps workers at their most protected — and productive. All models meet the ANSI Z87.1+ standards and provide 99% protection from harmful UV rays.



Pyramex Contact

Andy Eschbach
Email: andy@pyramexsafety.com
Phone: 901-861-6100 x302





ADDITIONAL INFORMATION

Keep your crew safe, comfortable and in compliance. Carhartt has the information and the resources you need, here for you, 24/7.

WORKWEAR MADE BRIGHT

AND TO GET THE JOB DONE RIGHT

IMPROVE VISIBILITY WITH REFLECTIVE STRIPING. ADD TO ANY FR COAT, JACKET, COVERALLS, AND BIBS.

Carhartt uses 3M™ Scotchlite™ Reflective Material because 1 in 3 garments that don't use 3M™ Scotchlite™ Reflective Material are not bright enough to meet relevant safety standards right out of the package, even though they are labeled as compliant.*

Carhartt FR and 3M: Outworking Them All to keep workers safe.

PLEASE CALL CARHARTT COMPANY GEAR CUSTOMER ENGAGEMENT AT 1-800-786-3916 OR INDUSTRIAL_SALES@CARHARTT.COM

*Based on a study by 3M of seventy-nine vests purchased on the open market (all using components other than 3M™ Scotchlite™ Reflective Material), 33% failed the ANSI 107 test for initial brightness. This data was verified by third-party testing.

3M and Scotchlite are trademarks of 3M, used under license in Canada.



PROPER CARE AND USE OF CARHARTT FR

PROPER CARE

Follow the **manufacturer care instructions** located on the inside tag of each FR garment, and these guidelines when home laundering your Carhartt FR:

- Wash garment with normal laundry detergent separately from non-FR garments in cold-warm water
- **DO NOT** use bleach (or detergents containing bleach/hydrogen peroxide)
- **DO NOT** use stain remover
- **DO NOT** use starch
- **DO NOT** use fabric softener/dryer sheets

PROPER USE

Follow **your company's** safety requirements to determine the standards and calorie rating your garment must meet when working in hazardous areas.

- Carhartt recommends flame-resistant clothing be worn as base layers under FR garments
- Garments should have a reasonable fit with no modifications that will reduce effectiveness
- Prevent additional exposure to skin (keep garments buttoned and sleeves rolled down)
- Keep shirts tucked in when in a hazardous area
- Do not apply DEET to FR clothing — **DEET IS FLAMMABLE**

USEFUL LIFE AND REPAIRS

Regularly inspect your FR garments. Replace garments once they are past their useful life:

- Torn/ripped fabric
- Open seams/holes
- Fabric is frayed or threadbare
- Garment has been bleached
- Garment is soiled with flammable substances

Carhartt FR clothing can be repaired. The FR fabrics and Nomex® threads used for repairs should be equivalent in performance and FR characteristics to those used in the original construction of the garment.

CARHARTT FR IS GUARANTEED FLAME-RESISTANT FOR THE USEFUL LIFE OF THE GARMENT, PROVIDED MANUFACTURER CARE INSTRUCTIONS ARE FOLLOWED.

FREQUENTLY ASKED QUESTIONS

1 Who is Carhartt Flame-Resistant (FR) clothing designed for?

Carhartt FR clothing is designed for electricians and workers in the utility, oil, gas, and petrochemical fields who are at risk of exposure to electric arc flashes and flash fires, which could cause severe or fatal burn injuries. Typical candidates for FR clothing include electric linemen, pipeline and refinery workers, as well as industrial electricians.

2 How does Carhartt FR clothing help protect against burn injury?

Through the use of flame-resistant chemicals or fabric blends, Carhartt FR clothing is designed to self-extinguish within seconds after the source of ignition is removed, limiting the degree of burn and body burn percentage. It is not designed to be flameproof; it is flame-resistant.

3 Can the flame-resistant chemicals be washed out?

No. Carhartt FR clothing is guaranteed to be flame-resistant for the useful life of the garment regardless of the number of launderings, provided garment-care instructions are followed.

4 How can Carhartt FR clothing be distinguished from traditional Carhartt clothing?

Carhartt FR clothing is clearly identified with a "FR Carhartt" patch in place of the traditional Carhartt patch. Product hang tags and CAT labels also help distinguish Carhartt flame-resistant products.

5 What is an ATPV?

An Arc Thermal Performance Value (ATPV) is a rating assigned to flame-resistant clothing indicating the level of electrical arc flash protection provided. Higher-weight (e.g., thicker, denser) fabrics typically have higher ATPVs and provide increased protection (as does the layering of FR clothing). All Carhartt FR clothing has the ATPV marked on the inside label for easy reference.

6 What is EBT?

Like ATPV, Breakopen Threshold Energy (EBT) is a rating assigned to FR clothing indicating the level of protection provided. EBT is used when ATPV cannot be measured due to flame-resistant fabric breakopen. EBT is also measured in calories per centimeter squared (cal/cm²).

7 Can Carhartt FR clothing be repaired?

Yes, Carhartt FR clothing can be repaired, but repairs must be made with fabrics and sewing threads that have at least the same FR characteristics as the original garment.

8 Is flame-resistant thread required for embroidery applications?

None of the current regulations governing the use of flame-resistant clothing specifically requires the use of flame-resistant thread for embroidery applications. However, Carhartt recommends using flame-resistant thread for embroidery or emblem attachment.

9 Can I use DEET on flame-resistant clothing?

No. DEET is one of the most effective mosquito repellents on the market, but it should only be used on the skin, never on FR clothing. For the most effective mosquito and tick protection, use DEET-based repellents on the skin (especially on exposed skin) and use a permethrin (the active ingredient in most lice shampoos) product washed into or applied to flame-resistant clothing. These products do not add any appreciable flammability to FR clothing and therefore do not affect its flame-resistant properties. When using permethrin in a spray form, use the **WATER-BASED** formulas only. Propellants are almost always flammable in this application, so the powder form washed into the clothing or the **WATER-BASED** spray formula is recommended.

FR HRC to CAT Clarification

carharttFR

What is a PPE category?

A PPE category is a rating for FR clothing based on the arc protection rating that indicates the level of protection the garment provides. There are four PPE categories ranging from 1 to 4, with a PPE category of 1 representing the least protection, and a PPE category of 4 representing the most protection. The NFPA 70E consensus standard assigns these categories based on the electrical maintenance tasks to be performed, and each PPE category relates to a specific range of arc protection. For example, PPE category 2 would include arc ratings greater or equal to 8 cal/cm² but less than 25 cal/cm².

PPE
CATEGORY (CAT)

1:
4 CAL/CM² MINIMUM

PPE
CATEGORY (CAT)

2:
8 CAL/CM² MINIMUM

PPE
CATEGORY (CAT)

3:
25 CAL/CM² MINIMUM

PPE
CATEGORY (CAT)

4:
40 CAL/CM² MINIMUM

WHAT'S NEW FOR YOU —AND YOUR— CREW

HRC → CAT

The 2015 edition of NFPA 70E standard replaced the term Hazard Risk Category (HRC) with "Category" (CAT) in reference to level of protection. Examples: HRC2 = CAT2. Carhartt FR clothing transitioned to CAT in Fall 2016. You will see it:

- On garment labels
- Packaging/hang tags
- Catalogs
- Website
- Spec sheets



OSHA General Duty Clause

Employers are required to provide their employees with a place of employment that is free from recognizable hazards that are causing or likely to cause death or serious harm to employees.

OSHA 1910.269

Federal regulation that defines the safety practices of employees working in the generation, transmission and distribution of electricity. Prohibits clothing that, when exposed to flames or arcs, could increase the extent of wearer injury. Employers must determine appropriate clothing based on an evaluation of potential hazards in the work environment. Clothing made from flame-resistant materials is acceptable under the rule; i.e., clothing that meets the requirements of ASTM F1506.

The employer shall ensure that each employee exposed to potential hazards from electric arcs wears protective clothing and other protective equipment with an arc rating greater than or equal to the heat energy estimate whenever that estimate exceeds the heat energy of 2.0 cal/cm².

The 2014 revision to the regulation requires that as of April 1, 2015, employers must provide protective equipment sufficient to cover the employee's entire body.

Acceptable FR clothing shall conform to the requirements of ASTM F-1506, and must have an appropriate arc rating [Arc Thermal Performance Value [ATPV], or Breakopen Threshold Energy [EBT]. The arc rated clothing must be rated at or above the potential hazard from an arc flash exposure.



National Electric Safety Code

National Electrical Safety Code (NESC) sets rules for safeguarding personnel during installation, operation, or maintenance of electric supply and communication lines and associated equipment.

States that employers must conduct a hazard analysis to determine the potential arc exposure for employees working on or near energized equipment. Arc rated clothing required if exposure is greater than 2 cal/cm².



Standard for electrical safety in the workplace

The NFPA 70E standard addresses electrical hazards in the workplace and supplements the NESC by focusing on protecting the worker from electrical hazards. The objective of this standard is to provide protection to workers based on the potential electrical exposure energy to which they could be exposed. NFPA 70E mandates that employers conduct a hazard risk assessment to determine the potential arc exposure for employees who work on or near energized parts or equipment.

NFPA 70E requires that employees wear proper arc-rated flame-resistant (FR) clothing whenever there is possible exposure to an arc flash event sufficient to cause a second degree burn. Such FR protective clothing must be rated for protection from electric arcs so they can be properly matched to the appropriate hazard levels. This arc rating, or ATPV, appears on the labeling of all FR protective apparel for easy referencing. Matching the arc rating of the flame-resistant apparel with the hazard rating maximizes worker protection against the chance of burn injury or death.



Standard on flame-resistant garments for protection of industrial personnel against flash fire

NFPA 2112 standard provides minimum requirements for the design, construction, evaluation, and certification of flame-resistant (FR) clothing for use by industrial personnel exposed

to potential flash fire situations. It does not attempt to provide any guidance on matching the PPE to the quantified hazards – that is what NFPA 2113 is designed for.



Standard on the fundamentals of combustible dust

NFPA 652 standard provides the general requirements for managing combustible dust fire and explosion hazards. It states that when FR clothing is required, it must comply

with the requirements of NFPA 2112 and be selected, procured, inspected, worn, and maintained in accordance with NFPA 2113.



Standard on selection, care, use, and maintenance of flame-resistant garments for protection of industrial personnel against flash fire

Provides minimum requirements for the selection, care, use, and maintenance of flame-resistant garments compliant with NFPA 2112 for use in potential flash fire situations. This standard

reduces the potential risks caused by incorrect maintenance, contamination, or damage to FR clothing.



American National Standard for high-visibility safety apparel and accessories

ANSI/ISEA 107 provides performance requirements for conspicuous materials to be used in high-visibility safety apparel (HVSA) and specifies minimum amounts of background, retroreflective, and combined-performance materials. The 2015 edition continues to present three performance classes of garments based on the amount of visible materials and design

attributes incorporated into the final garment configuration. The standard now identifies garment types based on expected use settings and work activities being performed. These are designated as off-road (type O), roadway and temporary traffic control (type R), or public safety activities (type P).

Layered testing is the only way to determine the total arc rating for layered FR garments. Carhartt has conducted layered testing for a variety of combinations, using some of our most popular FR clothing styles. The resulting layered arc rating of the various combinations is listed in the table below for your reference.

Carhartt FR Fabric Outer Layer	Style Reference #	Outer Layer Solo ARC Rating	Carhartt FR Fabric Inner Layer	Style Reference #	Inner Layer Solo ARC Rating	Combined Layered ARC Rating
7 oz twill, 88% cotton / 12% nylon	FRS160	8.6 cal/cm ²	6.75 oz FR jersey knit, 100% cotton	100234	8.9 cal/cm ²	ATPV = 30 cal/cm ²
6 oz twill, 88% cotton / 12% nylon	FRS003	8.7 cal/cm ²	6.75 oz FR jersey knit, 100% cotton	100234 / 100235 / 100237	8.9 cal/cm ²	ATPV = 28 cal/cm ²
9 oz twill, 100% cotton	101017	11 cal/cm ²	6.75 oz FR jersey knit, 100% cotton	100234 / 100235 / 100237	8.9 cal/cm ²	ATPV = 33 cal/cm ²
7.0 oz 3x1 twill, 87% cotton/7%nylon/ 5% polyester/1% spandex	102450 / 102459	8.7 cal/cm ²	6.75 oz FR jersey knit, 100% cotton	102685 / 102686 / 102687	8.9 cal/cm ²	ATPV = 22 cal/cm ²
6.7 oz ANSI yellow pique, 48% modacrylic/ 37% lyocell/15% aramid	102843 / 102905	8.2 cal/cm ²	6.0 oz FR jersey knit, 93% cotton/7% spandex	102903 / 102904	7.4 cal/cm ²	ATPV = 27 cal/cm ²
7.0 oz arapaho 3x1 twill, 88% cotton/12% nylon	FRS160	8.6 cal/cm ²	6.0 oz FR jersey knit, 93% cotton/7% spandex	102903 / 102904	7.4 cal/cm ²	ATPV = 27 cal/cm ²
6.75 oz FR jersey knit, 100% cotton	101698 / 100235 / 100237	8.9 cal/cm ²	6.0 oz FR jersey knit, 93% cotton/7% spandex	102903 / 102904	7.4 cal/cm ²	ATPV = 24 cal/cm ²
13.0 oz HW fleece with DWR finish, 56% modacrylic /34% lyocell/ 10% aramid	102907 / 102908 / 102690	9.9 cal/cm ²	6.0 oz FR jersey knit, 93% cotton/7% spandex	100234 / 100235 / 100237 / 101698	8.9 cal/cm ²	ATPV = 32 cal/cm ²
13.0 oz HW fleece with DWR finish, 56% modacrylic / 34% lyocell/10% aramid	102907 / 102908 / 102690	9.9 cal/cm ²	6.75 oz FR jersey knit, 100% cotton	100234 / 100235 / 100237 / 101698	8.9 cal/cm ²	ATPV = 32 cal/cm ²
13.0 oz HW fleece with DWR finish, 56% modacrylic /34% lyocell/ 10% aramid	102907 / 102908 / 102690	9.9 cal/cm ²	7 oz twill, 88% cotton, 12% nylon	FRS160	8.6 cal/cm ²	ATPV = 33 cal/cm ²
13.0 oz HW fleece with DWR finish, 56% modacrylic /34% lyocell/ 10% aramid	102907 / 102908 / 102690	9.9 cal/cm ²	6.75 oz FR jersey knit, 100% cotton	102685 / 102686 / 102687	8.9 cal/cm ²	ATPV = 32 cal/cm ²
13.0 oz HW fleece with DWR finish, 56% modacrylic /34% lyocell/ 10% aramid	102907 / 102908 / 102690	9.9 cal/cm ²	7.0 oz 3x1 twill, 87% cotton/ 7% nylon/5% polyester/ 1% spandex	102450 / 102459	8.7 cal/cm ²	ATPV = 31 cal/cm ²
13.0 oz HW fleece with DWR finish, 56% modacrylic /34% lyocell/ 10% aramid	102907 / 102908 / 102690	9.9 cal/cm ²	6.0 oz FR twill, 88% cotton/12% nylon	FRS003	8.7 cal/cm ²	ATPV = 33 cal/cm ²

Testing conducted for Carhartt, Inc. by Kinectrics High Current Laboratory, Toronto, Ontario, Canada.

STYLE NUMBER REFERENCE

Style #	Page #	Flame-Resistant	Big & Tall
FRA265	31	FR Duck Hood – Quilt-Lined	
FRB13	19	FR Signature Denim Dungaree	•
FRB004	19	FR Utility Jean – Relaxed Fit	•
FRB100	19	FR Signature Denim Jean – Relaxed Fit	•
FRB159	18	FR Midweight Canvas Pant – Loose Fit	•
FRB240	18	FR Canvas Cargo Pant	•
FRS003	11	FR Lightweight Twill Shirt	•
FRS160	12	FR Classic Twill Shirt	•
100234	7	FR Force Cotton Short-Sleeve T-Shirt	•
100235	6	FR Force Cotton Long-Sleeve T-Shirt	•
100237	6	FR Force Cotton Long-Sleeve Henley	•
100432	13	FR Canvas Shirt Jac	•
100791	18	FR Washed Duck Work Dungaree	•
101017	23	FR Traditional Twill Coveralls	•
101029	27	FR Mock-Neck Vest	•
101618	26	FR Duck Traditional Coat – Quilt-Lined	•
101621	26	FR Duck Active Jac – Quilt-Lined	•
101622	27	FR Midweight Canvas Active Jac – Quilt-Lined	•
101623	26	FR Duck Bomber Jacket – Quilt-Lined	•
101626	22	FR Duck Bib Overalls – Quilt-Lined	•
101627	22	FR Duck Bib Overalls – Unlined	•
101698	6	FR Force Cotton Hybrid Shirt	•
101814	21	FR Rugged Flex® Jean – Straight Fit	•
102179	28	FR Full Swing® Quick Duck® Jacket	•
102182	29	FR Full Swing® Quick Duck® Coat	•
102183	31	FR Quick Duck® Hood	
102459	12	Women's FR Rugged Flex® Twill Shirt	
102450	23	Women's FR Rugged Flex® Coveralls	

STYLE NUMBER REFERENCE

Style #	Page #	Flame-Resistant (continued)	Big & Tall
102682	13	FR Full Swing® Quick Duck® Shirt Jac	•
102685	7	Women's FR Force Cotton Long-Sleeve Crew Neck T-Shirt	
102686	7	Women's FR Force Cotton Long-Sleeve Henley	
102687	7	Women's FR Force Cotton Hybrid Shirt	
102688	21	Women's FR Rugged Flex® Jean – Original Fit	
102689	18	Women's FR Rugged Flex® Canvas Pant – Original Fit	
102690	16	Women's FR Heavyweight Zip Front Hooded Sweatshirt	
102691	22	FR Quick Duck® Bib Overalls – Quilt-Lined	•
102692	28	FR Full Swing® Quick Duck® Lanyard Access Jacket	•
102694	29	Women's FR Full Swing® Quick Duck® Jacket – Sherpa-Lined	
102843	9	FR High-Visibility Force Hybrid Shirt	•
102869	30	FR Knit Watch Hat	
102903	8	FR Force Cotton Short-Sleeve T-Shirt	•
102904	8	FR Force Cotton Long-Sleeve T-Shirt	•
102905	9	FR High-Visibility Force Long-Sleeve T-Shirt Class 3	•
102907	17	FR Heavyweight Hooded Sweatshirt	•
102908	17	FR Heavyweight Zip Front Hooded Sweatshirt	•

CUSTOM NON-STOCK SIZING

Some styles come in sizes that don't work with the majority of customers. So when one or more of these non-stock sizes is needed, they require longer lead times (typically 8-10 weeks), freight charges, order increments (by style multiples of minimum order number), and an "ALL ORDERS FINAL" return policy (no returns outside manufacturer defect). For more information on placing a custom order, call Customer Service at 800-786-3916. Orders can be placed by email at Industrial_Sales@Carhartt.com or by faxing them to 800-217-2895.

Refers to Style #	Non-Stock Style #	Product Name
100234	101669	NS FR Force Cotton SS T-Shirt
100235	101670	NS FR Force Cotton LS T-Shirt
100237	101671	NS FR Force Cotton LS Henley
102903	102993	NS FR Force SS T-Shirt
102904	102994	NS FR Force LS T-Shirt
102905	102995	NS FR High-Vis LS T-Shirt
101698	102594	NS FR Force Cotton Hybrid Shirt
102843	102963	NS FR High-Vis Force Hybrid Shirt
FRS160	101680	NS FR Classic Twill Shirt
FRS003	101681	NS FR LW Twill Shirt
102907	103366	NS FR HW Hooded Sweatshirt
102908	103367	NS FR HW Zip-Front Hooded Sweatshirt
FRB13	101656	NS FR Signature Denim Dungaree
FRB004	101657	NS FR Utility Denim Jean
FRB100	101658	NS FR Signature Denim Jean
FRB159	101661	NS FR Canvas Pant
FRB240	101662	NS FR Canvas Cargo Pant
100791	101663	NS FR Washed Duck Work Dungaree
101029	101634	NS FR Mock Neck Vest
101626	101640	NS FR Duck Bib Lined Overall
101627	101641	NS FR Duck Lined Bib Overall
101618	101642	NS FR Duck Traditional Coat
102182	102956	NS M FR Full Swing® Quick Duck® Coat
101017	101647	NS FR Traditional Twill Coverall
101621	101649	NS FR Duck Active Jac
101623	101650	NS FR Duck Bomber Jacket
101622	101654	NS FR Canvas Active Jac
102179	102957	NS M FR Full Swing® Quick Duck® Jacket

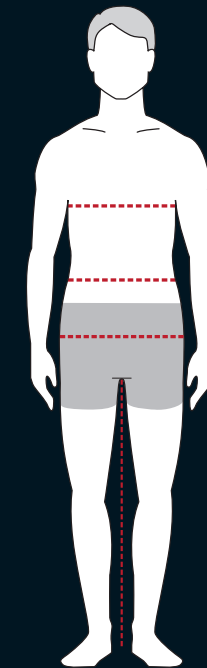
SIZING CHARTS – MEN'S

MEN'S BODY MEASUREMENTS (ALL EXCEPT NON-FR BIB OVERALLS, BIBERALLS AND COVERALLS)

	SMALL	MEDIUM	LARGE	X-LARGE	2X-LARGE	3X-LARGE	4X-LARGE	5X-LARGE	6X-LARGE									
Chest	34	36	38	40	42	44	46	48	50	52	54	56	58	60	62	64	66	68
Waist	28	30	32	34	36	38	40	42	44	46	48	50	52	54	56	58	60	62
Hip (Seat)	34	36	38	40	42	44	46	48	50	52	54	56	58	60	62	64	66	68

NOTE: If your measurement falls between sizes, buy the larger size.

HOW TO MEASURE



Chest:
Measure just under arms and across shoulder blades holding the tape firm and level. If your chest falls between sizes, order the next size up.

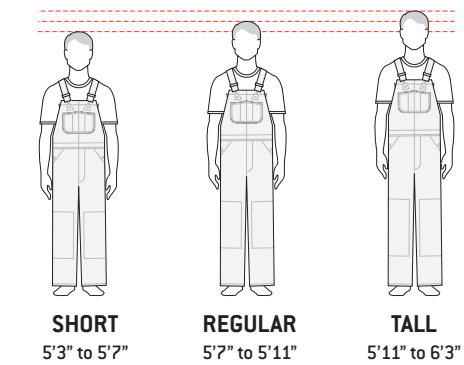
Natural Waist:
Bend side to side and find the natural bend in your body; this is your natural waist. Note: It may not be the smallest point.

Hip/Seat:
Measure the fullest point between your natural waist and crotch.

Inseam:
Measure from your crotch to the desired length on body. You may also measure pants that you currently own and like. Lay the garment flat and smooth out. Measure on the front from the crotch point along the seam to the hem for the inseam length.

For best results, measure over your undergarments.

HEIGHT CHART

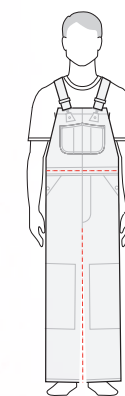


PANTS & SHORTS FITS

Straight Traditional Fit	Slim seat and thigh
Relaxed Fit	Relaxed seat and thigh
Loose Original Fit	Full seat and thigh

TOPS FITS

Relaxed Fit	A closer fit to the body
Original Fit	The most room to move



BIB OVERALLS

STYLE #: R01 (102776), R41

- If you fall between sizes, size up
- Size to the largest part of your waist
- Order based on your normal pant inseam. For example, if you wear a 32" inseam pant, you would wear a 32" inseam bib overall

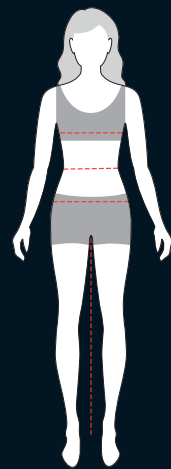
WAIST MEASUREMENT at largest point	28	30	32	34	36	38	40	42	44	46	48	50	52	54	56	58
Recommended size if worn with undergarments or lightweight layers	30	32	34	36	38	40	42	44	46	48	50	52	54	56	58	60
Recommended size if worn over heavier shirt and pants	32	34	36	38	40	42	44	46	48	50	52	54	56	58	60	—

WOMEN’S BODY MEASUREMENTS

	X-SMALL	SMALL	MEDIUM	LARGE	X-LARGE	XXL					
	2	4	6	8	10	12	14	16	18	20	22
Bust	33	34	35	36	37	38½	40	41½	43½	45½	47½
Natural Waist	27	28	29	30	31	32½	34	35¾	38	40¼	42½
Hip (Seat)	36	37	38	39	40	41½	43	44½	46½	48½	50½

- For outerwear, bibs, and tops: If you prefer a slimmer fit or are between sizes, try sizing down.
- For bottoms: If your measurement falls between sizes, buy the larger size.

HOW TO MEASURE



Bust:

Measure the fullest part of your bust, keeping the measuring tape parallel to the floor.

Natural Waist:

Bend side to side and find the natural bend in your body; this is your natural waist. Note: It may not be the smallest point.

Hips:

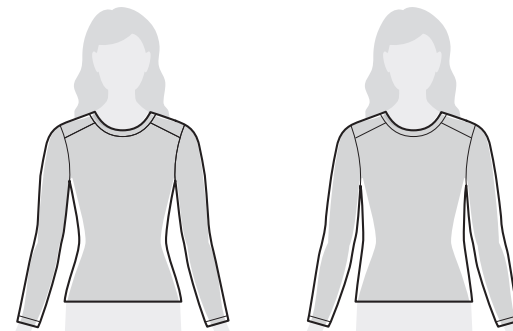
Measure the fullest part of your hips, approximately 8" below the natural waist.

Inseam:

Measure from your crotch down to the desired length on body. You may also measure pants that you currently own and like. Lay the garment flat and smooth out. To get the inseam length, measure on the front from the crotch point, along the seam, to the hem.

For best results, measure over your undergarments.

WOMEN’S TOPS FIT



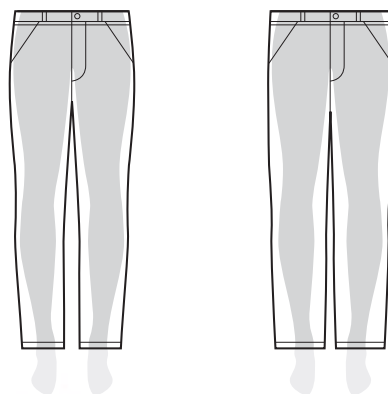
Slightly Fitted

Fit flows over the contours of the body
Gives shape without being snug

Relaxed Fit

Allows the most ease over body
Subtle shape for maximum range of motion

WOMEN’S PANT FIT



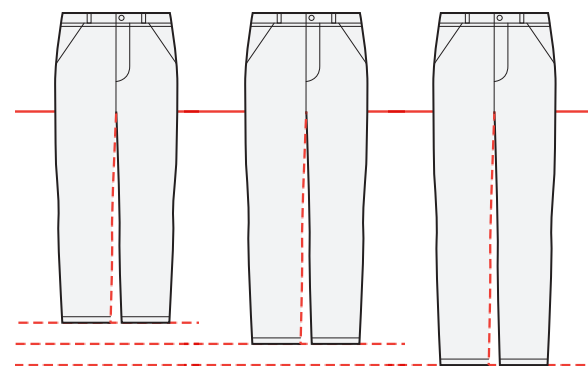
Original Fit

Mid-rise sits just below the waist
Easy fit through the hip and thigh
A classic look you can wear anywhere and everywhere

Relaxed Fit

Mid-rise sits just below the waist
Relaxed through the hip and thigh
Our roomiest fit gives you plenty of room to move throughout the workday

PANT INSEAM LENGTH CHART



Short

Inseam Measurement: 29"-30"

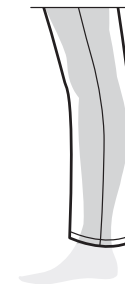
Regular

Inseam Measurement: 31"-32"

Tall

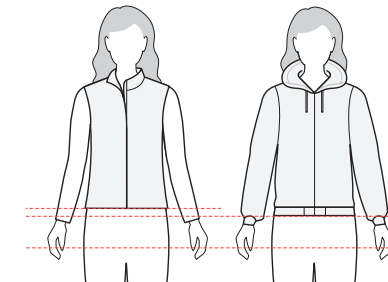
Inseam Measurement: 33"-34"

LEG OPENINGS



Straight Leg

OUTERWEAR CENTER BACK LENGTHS



Vests

24"-26.5"

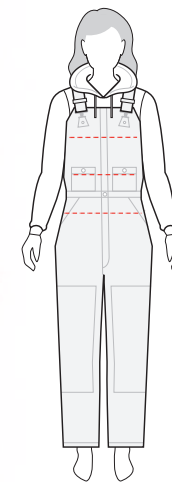
Jackets

25.5"-29"

BIB OVERALLS (LINED)

STYLE #: 102743

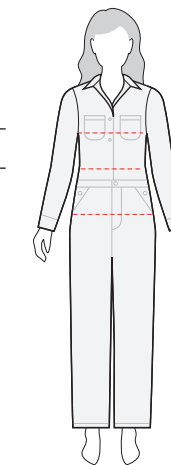
- Size to the largest part of your body
- Reference the inseam length chart and body measurement chart for guidance
- Measurements assume bib overall is layered over cold weather clothing. If you won't be layering, you may need to size them down



COVERALLS (UNLINED)

STYLE #: 102450

- Size to the largest part of your body
- Reference the inseam length chart and body measurement chart for guidance
- Measurements assume coverall is layered over clothing





Carhartt, Inc.

5750 MERCURY DRIVE
DEARBORN, MI 48126
800-786-3916
CARHARTT.COM