



Seventh Edition

Table of Contents

Handline Nozzles

Select Flow	2
Constant Flow.....	3
Automatic Flow.....	4
Low Pressure Nozzle s.....	5-6
Retractable Foam Nozzles	7-8

In Line Eductors & Piercing Nozzle

In Line Eductors.....	9
Piercing Nozzle.....	9

Foam Equipment

Foam Tubes.....	10
-----------------	----

Playpipes & Shutoffs

Playpipes.....	11
Ball Shutoffs.....	11

Smooth Bore Tips & Repair Kits

Smooth Bore Tips	12
Repair Kits	12

Forestry Products

Wykes & Nozzles	13-14
-----------------------	-------

Monitors

Individual Portable Monitor.....	15
Individual Portable Oscillating Monitor.....	16
Portable Deck Monitor.....	17

Deluge Tips & Master Stream

Deluge Tips & Master Stream Nozzle.....	18
---	----

Remote Area Lighting

Lighting	19
----------------	----

Wykes, Valves & Siamese

Wykes, Valves & Siamese	20-22
-------------------------------	-------

Firefighting Foam

Foam.....	23
-----------	----

Firehouse Cleaning Products

Cleaning Products	24-26
-------------------------	-------

Limited Warranty

Crestar Firefighting Equipment, LLC ("Crestar") warrants that its nozzles and related equipment shall be free from defects in material and workmanship for a period of five years from date of purchase. Crestar also warrants that its lighting products shall be free from defects in material and workmanship for a one year period from date of purchase.

This Limited Warranty does not cover any defect caused by normal wear and tear, improper installation of product, negligent use or storage of the product, a modification of the product after delivery, unauthorized repairs, or failure to follow Crestar's instructions or recommendations.

To qualify for this warranty, the alleged defective item must be returned within 30 days of the claim to Crestar Firefighting Equipment, LLC, 6400 N Honeytown Rd, Smithville, OH 44677. Crestar will, at its election, repair or replace any item with a defect covered by this Limited Warranty. If Crestar is unable to repair or replace the item on commercially practicable terms, Crestar may elect to refund the purchase price of such item. In no event will Crestar be responsible for consequential, incidental or indirect damages (including lost profits).

THIS IS A LIMITED WARRANTY. CRESTAR SPECIFICALLY DISCLAIMS ALL OTHER WARRANTIES, EXPRESS OR IMPLIED, INCLUDING ANY IMPLIED WARRANTY OF MERCHANTABILITY OR FITNESS FOR A PARTICULAR PURPOSE. No person has authority to change this warranty.

This Limited Warranty gives you specific legal rights, and you may also have other rights, which vary from state to state.

Select Flow Nozzle



Features

- Selectable gallonage nozzle with multiple flow settings
- Stainless steel spinning teeth
- Stainless steel ball enables ball shut off handle to work smoothly at extreme ranges
- Straight stream to wide fog and flush without shutting down
- Permanent anodized indicator bands
- Metal Horseshoe handle
- Multiple pattern detents for positive positioning
- Female inlet swivel with strainer
- Wide fog for maximum operator protection
- 100 PSI (7.0 BAR) standard, optional 75 PSI (5 BAR) see page 5
- NFPA 1964 compliant
- All nozzles include pistol grip
- NH or NPSH threads

Item	Inlet	Length	Weight (lbs)	Flow Setting	
				GPM	LPM
SF 30	1"	7"	3.80	12-23-30	50-90-115
SF 40	1"	7"	3.80	5-10-24-40	19-37-90-150
SF 125	1-1/2"	8.5"	3.80	30-60-95-125	115-230-360-475
SF 125 Tip Only	1-1/2"	6.4"	2.00	30-60-95-125	115-230-360-475
SF 200	1-1/2" & 2-1/2"	9.8"	5.50	95-125-150-200	360-475-550-750
SF 200 Tip only	1-1/2"	7"	3.20	95-125-150-200	360-475-550-750
SF 200X	1-1/2" & 2-1/2"	9.8"	5.50	30-60-95-125-150-200	115-230-360-475-550-750
SF 250	2-1/2"	9.8"	6.30	95-125-150-200-250	360-475-550-750-950
SF 250 Tip Only	1-1/2"	7"	3.20	95-125-150-200-250	360-475-550-750-950

Constant Flow Nozzle



Features

- Fixed constant gallonage nozzle with multiple flow settings available
- Durable lightweight alloy design
- Stainless steel spinning teeth
- Stainless steel ball enables ball shut off handle to work smoothly at extreme ranges
- Straight stream to wide fog and flush without shutting down
- Permanent anodized metal indicator bands
- Metal horseshoe handle
- Female inlet swivel with strainer
- Wide fog for maximum operator protection
- 100 PSI (7.0 BAR) standard, optional 50 PSI (3-1/2 BAR) & 75 PSI (5 BAR) see page 5
- NFPA 1964 compliant
- All nozzles include pistol grip
- NH or NPSH threads

Item	Inlet	Length	Weight (lbs)	Flow Setting	
				GPM	LPM
CF 23	1"	7"	3.80	13,25,40 or 60	50, 100, 150, or 230
CF 95	1-1/2"	8.1"	3.80	60,95, or 125	230,360, or 475
CF 200	1-1/2" & 2-1/2"	10"	5.80	150,200, or 250	550,750, or 950
CF 200 Tip only	1-1/2"	7"	3.20	150,200, or 250	550,750, or 950
CF 250	2-1/2"	11"	6.40	200,250, or 300	750, 950, or 1140

Automatic Flow Nozzle



Features

- Durable lightweight alloy design
- Slide valve control
- Straight stream to wide fog and flush without shutting down
- Female inlet swivel with strainer
- Wide fog for maximum operator protection
- Permanent anodized metal indicator bands
- Metal horseshoe handle
- Molded fixed teeth for fog
- NFPA 1964 compliant
- All nozzles include pistol grip
- NH or NPSH threads

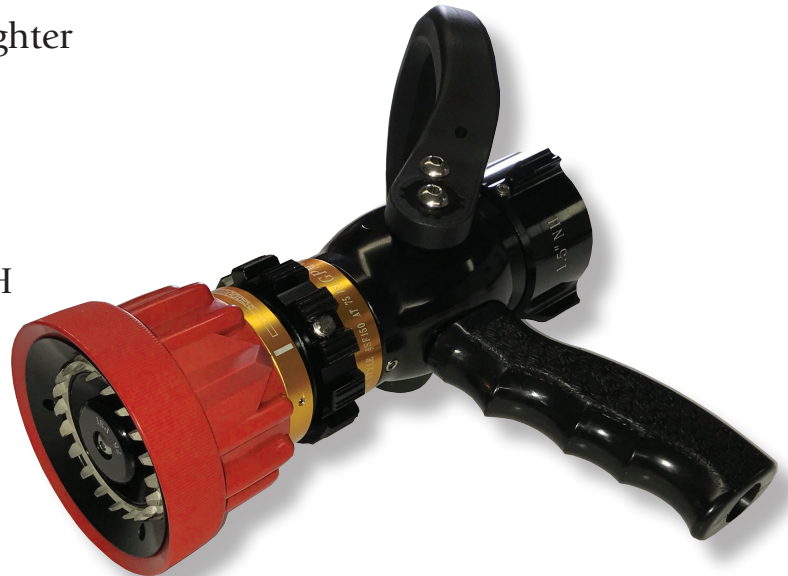
Item	Inlet	Length	Weight (lbs)	Flow Setting	
				GPM	LPM
AF 125	1" & 1-1/2"	9.2"	3.40	10-125	40-475
AF 200	1-1/2"	10.8"	5.20	70-200	265-750
AF 350	2-1/2"	11.6"	7.60	50-350	190-1325

Low Pressure Nozzles

SF 150

NEW!

- Selectable gallonage nozzle with multiple flow settings up to 150 gpm
- Low pressure, 75 PSI minimizes fire fighter fatigue and pressure on pumps
- Stainless steel spinning teeth
- Permanent anodized indicator bands
- Straight stream to wide fog and FLUSH without shutting down
- Female inlet swivel with strainer
- Stainless steel ball enables ball shut off handle to work smoothly at extreme ranges
- Flow pattern change via an efficient 120° turn of bumper
- Lightweight aluminum construction, 3.9 lbs
- Includes pistol grip
- NFPA 1964 compliant
- NH or NPSH threads



Item	Inlet	Length	Weight (lbs)	Flow Setting	
				GPM	LPM
SF150	1 1/2"	9"	3.9	30-60-95-125-150	115-230-360-475-570

Low Pressure Nozzles

CF 150

- Fixed constant gallonage nozzle with flow setting at 150 gpm
- Low pressure, 75 PSI minimizes fire fighter fatigue and pressure on pumps
- Stainless steel spinning teeth
- Permanent anodized indicator bands
- Straight stream to wide fog and FLUSH without shutting down
- Female inlet swivel with strainer
- Stainless steel ball enables ball shut off handle to work smoothly at extreme ranges
- Flow pattern change via an efficient 120° turn of bumper
- Lightweight aluminum construction, 3.9 lbs
- Includes pistol grip
- NFPA 1964 compliant
- NH or NPSH threads

NEW!



Item	Inlet	Length	Weight (lbs)	Flow Setting	
				GPM	LPM
CF150	1 1/2"	8.5"	3.9	150	570

Retractable Foam Nozzles

SF125F

- Selectable gallonage nozzle with multiple flow settings up to 125 gpm
- Retractable foam aspirating sleeve offers flexibility to aspirate foam and flow stream and fog in a single unit
- NH or NPSH threads
- Stainless steel spinning teeth
- Permanent anodized indicator bands
- Straight stream to wide fog and FLUSH without shutting down
- Female inlet swivel with strainer
- Stainless steel ball enables ball shut off handle to work smoothly at extreme ranges
- Lightweight aluminum construction, 4.6 lbs
- Includes pistol grip
- NFPA 1964 compliant
- NH or NPSH threads

NEW!



Retracted



<i>Item</i>	<i>Inlet</i>	<i>Length</i>	<i>Weight (lbs)</i>	<i>Flow Setting</i>	
				<i>GPM</i>	<i>LPM</i>
SF125F	1 1/2"	10"	4.6	30-60-95-125	115-230-360-475

Retractable Foam Nozzles

CF95F

- Fixed constant gallonage nozzle with multiple flow settings preset at 95 gpm
- Retractable foam aspirating sleeve offers flexibility to aspirate foam and flow stream and fog in a single unit
- Stainless steel spinning teeth
- Permanent anodized indicator bands
- Straight stream to wide fog and FLUSH without shutting down
- Female inlet swivel with strainer
- Stainless steel ball enables ball shut off handle to work smoothly at extreme ranges
- Lightweight aluminum construction, 4.4 lbs
- Includes pistol grip
- NFPA 1964 compliant
- NH or NPSH threads

NEW!



Retracted



<i>Item</i>	<i>Inlet</i>	<i>Length</i>	<i>Weight (lbs)</i>	<i>Flow Setting</i>	
				<i>GPM</i>	<i>LPM</i>
CF95F	1 1/2"	10"	4.4	60, 95, or 125	230, 360, or 475

In Line Eductors & Piercing Nozzle

In Line Eductor

- Lightweight alloy construction
- Check ball to prevent backflow
- Large easy to read metering device
- Metering valve with 6 settings: 0 (shutoff), 1/4, 1/2, 1, 3, & 6%
- Detachable metering device for quick and easy cleaning
- Rated to flow at 200 PSI



<i>Item</i>	<i>Length</i>	<i>Weight (lbs)</i>	<i>Thread Size</i>		<i>Flow Settings</i>	
			<i>Inlet</i>	<i>Outlet</i>	<i>GPM</i>	<i>LPM</i>
ILE095	8'	4	1-1/2"	1-1/2"	95	360
ILE125	8"	6	1-1/2"	1-1/2"	125	475
ILE250	12"	6	2-1/2"	2-1/2"	250	950

Piercing Nozzle

- Steel Point
- Dense Fog Pattern
- 3' length
- 1-1/2" continuous swivel inlet



<i>Item</i>	<i>Description</i>	<i>Inlet</i>	<i>Length</i>	<i>Weight (lbs)</i>
PCN125	Piercing Nozzle 125 GPM	1-1/2"	3'	12

Foam Equipment

Foam Tubes

- Designed to quickly attach to pattern bumper of Crestar nozzles
- Ideal for use with all types of foam
- Enhances the expansion of foam solution and delivers longer reach and heavier foam blanket
- Foam ratio up 14:1

Item	Length	Weight (lbs)	Fits Nozzles
FT309	15.5"	2.34	CF23, SF30 & SF40
FT337	16"	2.78	CF95 & SF125
FT419	16"	2.71	CF200, CF250, SF200, SF200X & SF250
FTA12	16.5"	2.5	AF125
FTA20	17"	2.5	AF200
FTA35	15"	3	AF350

FT419

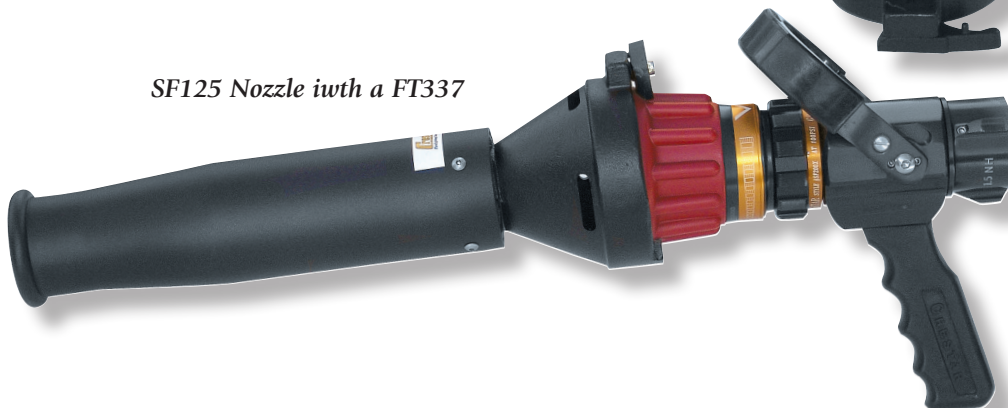


FT337



FT309

SF125 Nozzle with a FT337



Medium expansion Foam Tubes

- Designed to quickly attach to pattern bumper of Crestar nozzles
- Ideal for use with all types of foam
- Constructed of stainless steel for extended life
- Foam ratio up to 50:1

Item	Length	Weight (lbs)	Fits Nozzles
MEFT309	11"	3	CF23, SF30 & SF40
MEFT337	11"	3	CF95 & SF125
MEFT419	11"	3	CF200, CF250, SF200, SF200X & SF250



Playpipes & Shutoffs

Playpipe

- Lightweight aluminum body
- Hardcoat anodized
- 2-1/2" inlet X 1-1/2" outlet
- AVAILABLE WITH:
 - Stacked Tips
 - Break-apart tips



BSPP shown
with SF250T



BSPP



BSPP shown
with ST312 tip

Item	Length	Weight (lbs)	Thread Size		Waterway
			Inlet	Outlet	
BSPP	10.25"	6.14	2-1/2"	1-1/2"	1-3/8"

Ball Shutoffs

- Lightweight aluminum body
- Stainless steel ball allows smoother operation at extreme ranges
- For CAFS or high rise operation we recommend removing strainer
- 3/4", 1" & 1-3/8" waterway
- NH or NPSH threads
- AVAILABLE WITH:
 - Pistol grip
 - Smooth bore tips
 - Break apart nozzle tips
 - 3 different inlet sizes:
 - 2-1/2" inlet
 - 1-1/2" inlet
 - 1" inlet



BS10



BS15



BS2515



BS2525

Item	Length	Weight (lbs)	Thread Size		Waterway
			Inlet	Outlet	
BS10	4.75"	1.5	1"	1"	3/4"
BS15	5"	2.68	1-1/2"	1-1/2"	1"
BS2515	5.5"	3.44	1-1/2"	1-1/2"	1-3/8"
BS2525	5.5"	3.44	2-1/2"	1-1/2"	1-3/8"

Smooth Bore Tips & Repair Kits



Smooth Bore Tips

- Extruded aluminum body
- Hardcoat anodized
- Multiple styles and orifices available

SS175



Item	Description	Length	Thread Size			Discharge
			Inlet	Middle	Tip	
SBT45	Smooth Bore Tip	4.5"	1"			3/8"
SBT6088	Smooth Bore Tip	6"	1-1/2"			7/8"
SBT6094	Smooth Bore Tip	6"	1-1/2"			15/16"
SBT6100	Smooth Bore Tip	6"	1-1/2"			1"
SBT61125	Smooth Bore Tip	6"	1-1/2"			1-1/8"
SBT61250	Smooth Bore Tip	6"	1-1/2"			1-1/4"
ST2675	Stacked Tip-Double	6.75"	1-1/2"	15/16"		1/2"
ST312	Stacked Tip-Triple	12"	1-1/2"	1-1/4"	1-1/8"	1"
SS175	Stream Straightner	2"	1-1/2"		1-1/2"	

Repair Kits

- When ordering please specify product or waterway size to assure proper kit and parts guide are sent. Crestar does offer full service repair on all products we sell.

Nozzle	Repair Kit	Nozzle	Repair Kit
SF30	RK15	CF200	RK25
SF40	RK15	CF250	RK25
SF125	RK15	AF125	RK65
SF200	RK25	AF200	RK75
SF200X	RK25	AF350	RK85
SF250	RK25	Non Locking Wye	RK35
CF23	RK15	Self Locking Wye	RK45
CF95	RK15	Hydrant Wye	RK55

Forestry Products

1.5" Dual Range Nozzle

- Available in NP (NPSH) or NH (NST) Thread
- Anodized aluminum construction
- 20 – 60 GPM or 20 – 90 GPM dual range flow
- Fog and Straight stream with twist shut-off
- 1 lb.
- Meets Forest Service Specifications (FSS)

1" Dual Range Nozzle

- Available in NP (NPSH) or NH (NST) Thread
- Anodized Aluminum construction
- 10 – 30 GPM
- Fog and Straight stream with twist shut-off
- 7/8 lb.
- Meets Forest Service Specifications (FSS)



FNDR1500



FNDR1000

Item	Description	Inlet	Weight (lbs)	Flow Setting	
				GPM	LPM
FNDR1500	1.5" Dual Range Nozzle	1.5"	1	20-60 or 20-90	75-227/75-340
FNDR1000	1" Dual Range	1"	1	10-30	37-115

FN1030

- Rugged construction
- Twist "OFF", settings for low flow/straight stream, low flow/narrow fog, high flow/straight stream, high flow/narrow fog
- 10-30 GPM flow

FN3000

- Selectable gallonage 8-15-30 GPM
- Twist "OFF"
- Straight stream to wide fog and flush without shutting down
- Stainless steel spinning teeth



FN1030



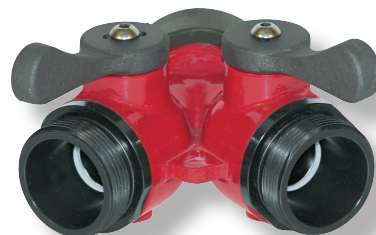
FN3000

Item	Description	Inlet	Weight (lbs)	Flow Setting	
				GPM	LPM
FN1030	Forestry Nozzle	1"	4"	10-30	37-115
FN3000	Forestry Nozzle	1"	5"	8-15-30	30-60-115

Forestry Products

FWNL1500

- Made of lightweight alloys
- Stainless steel ball shut-off
- Available in NH or NPSH
- 1-1/2" (F) inlet x (2) 1-1/2" (M) outlets



FWNL1500

FWNL1510

- Made of lightweight alloys
- Stainless steel ball shut-off
- Available in NH or NPSH
- 1-1/2" (F) inlet x (2) 1" (M) outlets



FWNL1510

FWNL1000

- Made of lightweight alloys
- Stainless steel ball shut-off
- Available in NH or NPSH
- 1" (F) inlet x (2) 1" (M) outlets



FWNL1000

FWNL0750

- Made of lightweight alloys
- Stainless steel ball shut-off
- Available in NH or NPSH
- 1-1/2" or 1" (F) inlet x (2) 3/4" (M) outlets



FWNL0750

<i>Item</i>	<i>Weight (lbs)</i>	<i>Inlet</i>	<i>Outlet</i>	<i>Waterway</i>
FWNL1500	2.25	1-1/2"	(2) x 1-1/2"	3/4"
FWNL1510	2.25	1-1/2"	(2) x 1"	3/4"
FWNL1000	2.125	1"	(2) x 1"	3/4"
FWNL0750	2.125	1.5"/1.0"	(2) x .75"	3/4"

Monitors

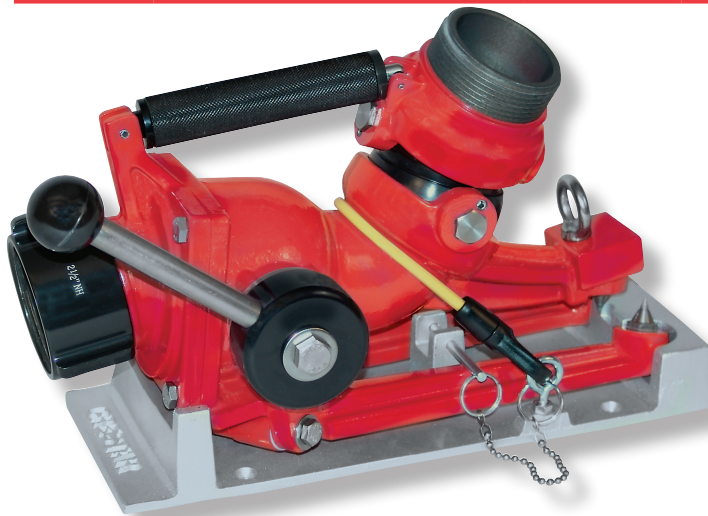
Individual Portable Monitor

- Use for quick attack operation with a flow range up to 500 GPM
- Unmanned operation frees up manpower at fire scene
- Compact and lightweight (only 14 lbs without nozzle)
- Horizontal rotation is $\pm 20^\circ$ of center
- Elevation adjustable between 30° to 60° unmanned and down to 20° when manned

Individual Portable Monitor with MS500



<i>Item</i>	<i>Description</i>	<i>Length</i>	<i>Weight (lbs)</i>
IPM500	Portable Monitor	15"	14
Optional Items			
MS500	Master Stream Nozzle	6.75"	4
DT9	Deluge Tip 1-1/2" tip	9"	2
DT9L	Deluge Tip 1-1/2" (threaded)	8"	2
SS3	Stream Straightner	3"	2
MP100	Mounting Plate	15"	4



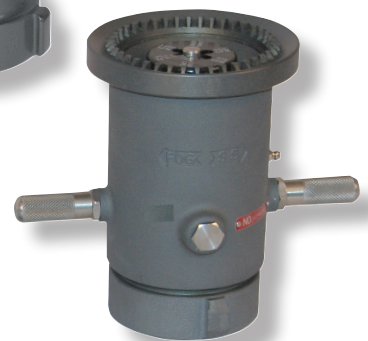
Individual Portable Monitor mounted on the MP100



DT9L



DT9

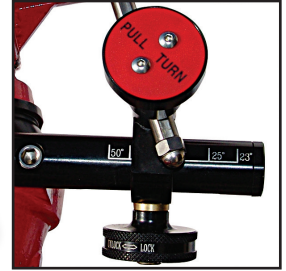
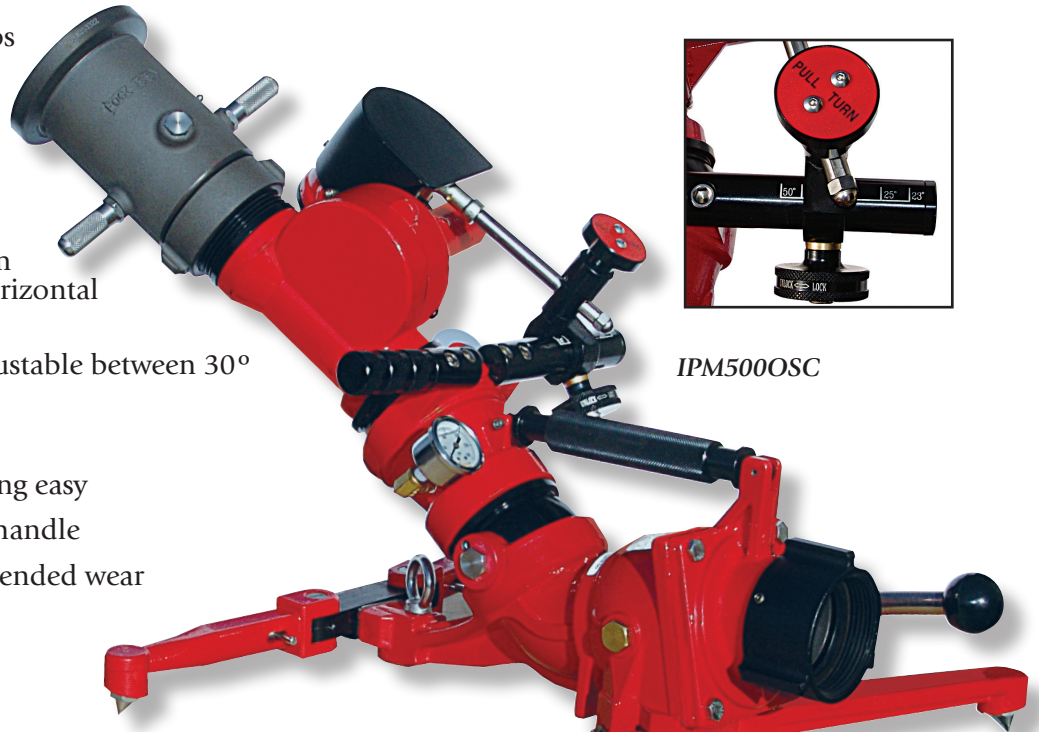


MS500

Monitors

Individual Portable Oscillating Monitor

- Water driven motor sweeps the nozzle side to side
- Automatic oscillation at 20°, 30° or 40° sweep
- On/Off knob can stop oscillating at any point
- The oscillating mechanism can be disengaged and horizontal rotation moved manually
- Elevation is manually adjustable between 30° to 60° unmanned
- Built-in pressure gauge
- Large handle makes moving easy
- Ball shutoff with locking handle
- Carbide tips spikes for extended wear and stability
- Weight: 33 lbs



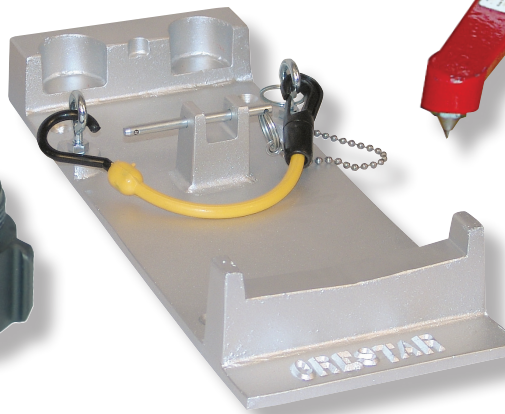
IPM500OSC



DT9



SS3



MP100



MS500

Item	Description	Length	Weight (lbs)
IPM500OSC	Oscillating Portable Monitor	15"	33
MS500	Master Stream Nozzle	6.75"	4
DT9	Deluge Tip 1.5" tip	9"	2
SS3	Stream Straightner	3"	2
MP100	Mounting Plate	15"	4

Portable Deck Monitor

- Durable, lightweight aluminum construction (32 lbs.)
- Dual application for use as a portable monitor or add top flange for deck mount use
- Compact folding base
- Spring loaded locking system for positive locking
- Safety stop at 30° above horizontal
- Full, unobstructed 3" waterway for low friction loss
- Pressure gauge
- Dual clappered 2-1/2" continuous swivel inlets
- LDH single inlet 4" NH, 4" Storz or 5" Storz



*Dual Inlet Deck Monitor
(DM 1250) with Master
Stream Nozzle (MSN1250)*

- **ADDITIONAL OPTIONS:**

Master Stream nozzle
Stream straightner
Discharge pipe
Stacked tips
Top mount flange
(bolt or threaded)
18" Extension pipe
(rated at 200 PSI)

TMT 190



TMF 190



Ext Pipe



<i>Item</i>	<i>Description</i>	<i>Inlet</i>	<i>Weight (lbs)</i>	<i>Outlet</i>	<i>Width</i>	<i>Depth</i>	<i>Height</i>
DM 1250	Portable Deck Monitor	(2) 2-1/2"	32	2-1/2"	25"	26"	16"
DM 1250S	Portable Deck Monitor Single Inlet	4" NH, 4 & 5" Storz	32	2-1/2"	25"	26"	16"
DM 1250M	Portable Deck Monitor Mount Only	3"	20	2-1/2"	14"	14"	11"
TMF 190	Top Mount Flange four bolt	3"	5				7-1/4"
TMT 190	Top Mount Flange threaded	3" NPT	3				6"
Ext Pipe	Extension pipe for DM1250		10				18"

Deluge Tips & Master Stream

Deluge Tips

- Extruded aluminum body
- Hardcoat anodized
- Multiple styles and orifices available
- 2-1/2" inlet base



Item	Description	Length	Thread Size			Discharge
			Inlet	Middle	Tip	
DT9	Deluge Tip	9"	2-1/2"		1-1/2"	1-1/2"
DTP-TL	Deluge Tip (threaded)	9"	2-1/2"		1-1/2"	1-1/2"
DTQ17	Deluge Tip-Quad	17"	2-1/2"	2" & 1-3/4"	1-1/2"	1-3/8"
DTT12	Deluge Tip-Triple	12"	2-1/2"	1-3/4"	1-1/2"	1-3/8"
DP11	Discharge Pipe	11"	2-1/2"			2-1/2"
SS3	Stream Straightner	3"	2-1/2"		2-1/2"	

Master Stream Nozzles

- Made of durable lightweight alloy
- Adjustable flow settings
- Combination fog and straight stream
- 2-1/2" inlet



Item	Description	Teeth	Inlet	Weight (lbs)
MS500	Master Stream 250-375-500 GPM	Fixed	2-1/2" (F)	4
MS750	Master Stream 250-400-550-750 GPM	Spinning	2-1/2" (F)	8.3
MSN1250	Master Stream 500-750-1000-1250 GPM	Spinning	2-1/2" (F)	8.5

Lighting

Crelight-012

- Lightweight Design
- AC or DC charging available
- Waterproof Rate: IP67
- Spotlight heat rotates 120°
- HIGH-LOW-SOS lighting options
- Available in black or yellow
- Carrying Strap



Crelight-012

Model	LED Life	# LED	Luman	Charger	Battery	Battery Burn Time	LED Power	Dimension	Weight
Crelight-012	100,000 H	4	2000 Lm	AC/DC	12V 10 Ah Lithium	4.5 L - 2.5 H	12 W	10" x 4" x 6"	3 lbs.

Crelight-036

- Lightweight & easy to assemble
- Dual AC or DC charging available
- Mast height extends 31"
- Light pivots 360°
- Waterproof rate: IP67
- HIGH-MEDIUM-LOW-SOS lighting options
- Hours of use on one battery charge
- Silent Operation
- Available in black or yellow
- Carrying bag included



Crelight-036

Crelight-080 & Crelight-144

- Telescoping LED light heads
- Up to 8000 Lm of lighting
- HIGH-MEDIUM-LOW-SOS lighting options
- Fully extended mast with 360° rotation
- Digital display of remaining battery charge
- Waterproof Rat: IP67
- Strong, durable wheeled carrying cases
- Silent operation
- AC or DC charging system
- Additional port for USB charging of electronics



Crelight-080



Crelight-144

Model	LED Life	# LED	Luman	Charger	Battery	Battery Burn Time	LED Power	Mast Height	Dimension	Weight
Crelight-036	50,000 H	12	2200 Lm	AC/DC	12V 10 Ah Lithium	25 hr (L)- 7 hr (H)	36 W	31"	15" x 8" x 8"	10 lbs.
Crelight-080	50,000 H	24	5000 Lm	AC/DC	12V 10 Ah Lithium	25 hr (L)- 7 hr (H)	80 W	77"	23" x 10" x 13"	31 lbs.
Crelight-144	50,000 H	48	8000 Lm	AC/DC	12V 10 Ah Lithium	25 hr (L)- 7 hr (H)	144 W	81"	15" x 8" x 8"	54 lbs.

Wyes, Valves & Siamese

Leader Line Wye

- Made of lightweight alloys
- Non-locking
- 2-1/2" (F) inlet X two 1-1/2" (M) outlets

Leader Line Wye

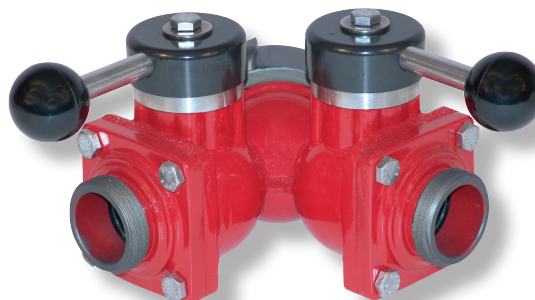
- Made of lightweight alloy
- Self-locking handle
- 2-1/2" (F) inlet X two 1-1/2" (M) outlets

Forestry Wye

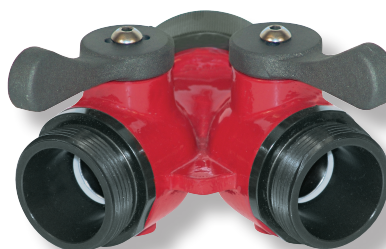
- Made of lightweight alloys
- Non-locking handles
- Stainless steel ball shut-off
- Available in NH or NPSH



LWNL



LWSL



FWNL1500



FWNL1510



FWNL1000



FWNL0750

Model	Description	Handle	Weight (lbs)	Inlet	Outlet
LWNL	Leader Line Wye	Non-Locking	4.02	2-1/2" (F)	(2) 1-1/2" (M)
LWSL	Leader Line Wye	Self-Locking	6.41	2-1/2" (F)	(2) 1-1/2" (M)
FWNL1500	Forestry Wye	Non-Locking	2.25	1-1/2" (F)	(2) 1-1/2" (M)
FWNL1510	Forestry Wye	Non-Locking	2.25	1-1/2" (F)	(2) 1" (M)
FWNL1000	Forestry Wye	Non-Locking	2.125	1" (F)	(2) 1" (M)
FWNL0750	Forestry Wye	Non-Locking	2.125	1-1/2" + 1" (F)	(2) 3/4" (M)

Wyes, Valves & Siamese

Hydrant Wye

- Self-locking handle
- Durable construction
- 2-1/2" – 6" (F) inlet X two 2-1/2" (M) outlets

Hydrant Gate Valve

- Made of lightweight alloy
- Non-rising stem
- 2-1/2" (F) inlet X 2-1/2" (M) outlet

Hydrant Ball Valve

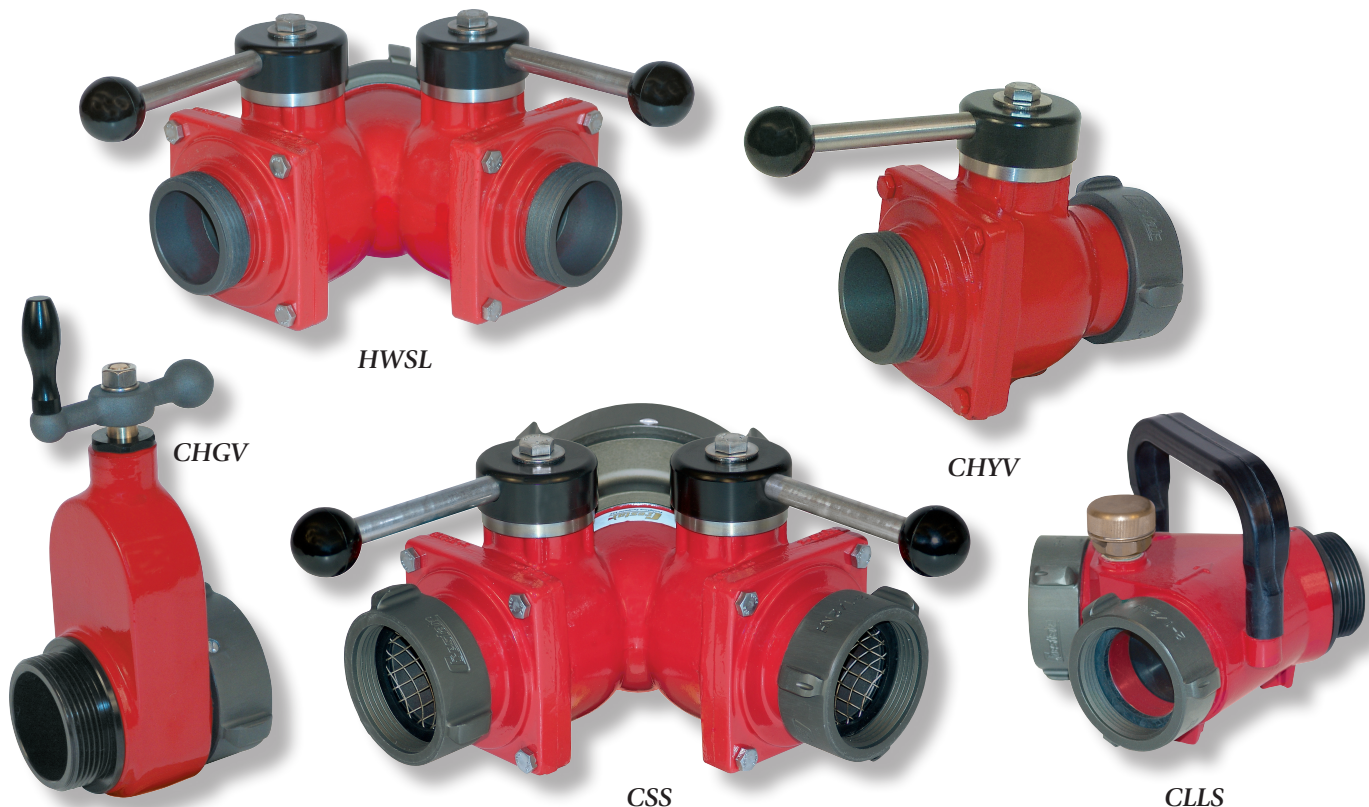
- Made of lightweight alloys
- Self-locking handle
- 2-1/2" (F) inlet X 2-1/2" (M) outlet

Suction Siamese

- Use as suction inlet for pumps
- Self-locking handle
- 2-1/2" – 6" (F) outlet X two 2-1/2" (F) inlets

Clappered Siamese

- Lightweight alloy
- 2 1/2" (M) outlet X two 2 1/2" (F) inlets
- Drain valve



<i>Model</i>	<i>Description</i>	<i>Handle</i>	<i>Weight (lbs)</i>	<i>Inlet</i>	<i>Outlet</i>
HWSL	Hydrant Wye	Self-Locking	14.35	2-1/2" - 6" (F)	(2) 2-1/2" (M)
CHYV	Ball Hydrant Valve	Self-Locking	7	2-1/2" (F)	2-1/2" (M)
CHGV	Hydrant Gate Valve	Non-Rising Stem	4.5	2-1/2" (F)	2-1/2" (M)
CSS	Suction Siamese	Self-Locking	7	(2) 2-1/2" (F)	2-1/2" - 6" (F)
CLLS	Clappered Siamese		6.4	(2) 2-1/2" (F)	2-1/2" (M)

Wyes, Valves & Siamese

Hydrant Wye

- Non-locking handle
- 2-1/2" (F) inlet X two 2-1/2" NH (M) outlets

3 Way Hydrant Wye

- Self-locking handle
- 2-1/2" - 6" (F) inlet X three 2-1/2" (M) outlets

3 Way Suction Siamese

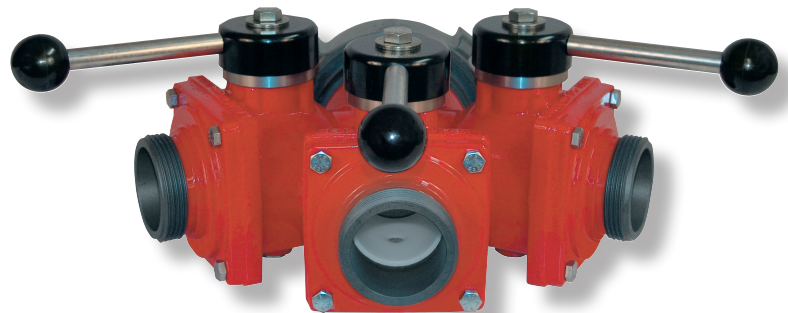
- Self-locking handle
- Durable construction
- 2-1/2" - 6" (F) outlet X three 2-1/2" (F) inlets

Water Thief

- Made of lightweight alloys
- Self-locking handle
- 2-1/2" (F) inlet X one 2-1/2" (M) outlet X two 1-1/2" (M) outlets



HWNL



CR3W



CR3S



CWTH

<i>Model</i>	<i>Description</i>	<i>Handle</i>	<i>Weight (lbs)</i>	<i>Inlet</i>	<i>Outlet</i>
HWNL	Hydrant Wye	Non-locking	8	2 1/2" (F)	(2) 2 1/2" (M)
CR3W	3 Way hydrant wye	Self-Locking	22	2 1/2" - 6" (F)	(3) 2 1/2" (M)
CR3S	3 Way Suction Siamese	Self-Locking	22	(3) 2 1/2" (F)	2 1/2" - 6" (F)
CWTH	Water thief	Self-Locking	14	2 1/2" (F)	(1) 2 1/2" (M) x (2) 1 1/2" (M)

Firefighting Foam



Class A

- Use for Class A fires
- Concentrated .1%-1% AFFF
- Meets NFPA 11
- Environmentally friendly

<i>Product</i>	<i>Description</i>	<i>Size</i>
CREFOAMA 005	Class A Foam	5 Gal
CREFOAMA 055	Class A Foam	55 Gal

Class B

- Use for Class B fires
- Concentrated 3-6% AR-AFFF
- Meets NFPA 11
- Environmentally friendly

<i>Product</i>	<i>Description</i>	<i>Size</i>
CREFOAMB 005	Class B Foam	5 Gal
CREFOAMB 055	Class B Foam	55 Gal

Class A/B

- Use for Class A & B fires
- Concentrated .1%-1% Class A
3-6% Class B
- Meets NFPA 11
- Environmentally friendly

<i>Product</i>	<i>Description</i>	<i>Size</i>
CREFOAMAB 005	Class A/B Foam	5 Gal
CREFOAMAB 055	Class A/B Foam	55 Gal

Training

- For training only
- Concentrated 1-6% AFFF
- Environmentally friendly

<i>Product</i>	<i>Description</i>	<i>Size</i>
CREFOAMTR 005	Training Foam	5 Gal
CREFOAMTR 055	Training Foam	55 Gal

FireHOUSE CLEANERS



Easy Step Wash & Wax

- Leaves a great shine and a clean dry surface
- Leaves no residue behind when towel dried
- Contains no acid

Product	Description	Size
CREWSWX0004-1	Easy Step Wash & Wax	1 Gal
CREWSWX0004	Easy Step Wash & Wax	(4) 1 Gal
CREWSWX0005	Easy Step Wash & Wax	5 Gal
CREWSWX0055	Easy Step Wash & Wax	55 Gal



Bug Remover

- Designed to soften or loosen bugs on apparatus with limited scrubbing
- Ready to use product
- Natural solvent
- Safe on all surfaces
- Rinse after use
- Fresh citrus scent

Product	Description	Size
CREBUGR004-1	Bug Remover	1 Gal
CREBUGR004	Bug Remover	(4) 1 Gal
CREBUGR004	Bug Remover	5 Gal
CREBUGR004	Bug Remover	55 Gal



Firehouse Cleaners

Red Hot Tire & Engine Cleaner

- Cleans dirty tires & removes brake dust on wheels without damage
- Excellent cleaner on diamond plate & ladders

Product	Description	Size
CREREDHOT004-1	Tire & Engine Cleaner	1 Gal
CREREDHOT004	Tire & Engine Cleaner	(4) 1 Gal
CREREDHOT005	Tire & Engine Cleaner	5 Gal
CREREDHOT055	Tire & Engine Cleaner	55 Gal



Lustre Max Tire & Interior Dressing

- Renews dull gray appearance
- Ready to use formula

Product	Description	Size
CREREDHOT004-1	Tire & Engine Cleaner	1 Gal
CRELUSMX0004	Tire & Interior Dressing	(4) 1 Gal
CRELUSMX0005	Tire & Interior Dressing	5 Gal
CRELUSMX0055	Tire & Interior Dressing	55 Gal

Laundry Cleaner Heavy Duty

- Economical liquid detergent
- Specifically designed for turn out gear
- Meets NFPA 1851
- pH level 7.0-8.0
- Non-allergenic

Product	Description	Size
CRELAUNDRY04-1	Heavy Duty Laundry Detergent	1 Gal
CRELAUNDRY04	Heavy Duty Laundry Detergent	(4) 1 Gal
CRELAUNDRY05	Heavy Duty Laundry Detergent	5 Gal
CRELAUNDRY55	Heavy Duty Laundry Detergent	55 Gal



Firehouse Cleaners

All of our Firehouse Cleaners are designed to meet the needs of every firehouse. Our products are proven to be safe on the environment, equipment, apparatus and the firefighter. From cleaning apparatus to cleaning countertops you can rely on the Crestar line of Firehouse Cleaners. All products available in 1, 5, & 55 gallon containers.

Titan Multi Purpose Cleaner

- Designed for firehouse cleaning tasks
- Use on firehose, turn out gear, ladders, vehicles, oil leaks, hydraulic spills
- Environmentally friendly

Product	Description	Size
CRETITAN0004-1	Multi Purpose Cleaner	1 Gal
CRETITAN0004	Multi Purpose Cleaner	(4) 1 Gal
CRETITAN0005	Multi Purpose Cleaner	5 Gal
CRETITAN0055	Multi Purpose Cleaner	55 Gal



Chrome Brightener

- Made especially for cleaning chrome and diamond plate
- Ready to use formula

Model	Description	Size
CRECHROMB004-1	Chrome Brightener	1 Gal
CRECHROMB004	Chrome Brightener	(4) 1 Gal
CRECHROMB005	Chrome Brightener	5 Gal
CRECHROMB030	Chrome Brightener	30 Gal



**6400 North Honeytown Road
P.O. Box 406 • Smithville, Ohio 44677
330.669.9066 • 866.306.9066 • Fax: 330.669.9355
www.crestarfire.com**

