



Danner
- EST. 1932 -

SPRING '20 WORKBOOK



**PEOPLE DON'T COME TO THE PACIFIC NORTHWEST TO BE THE SAME
AS EVERYONE ELSE. IT'S JUST NEVER BEEN THAT KIND OF PLACE.**

**WE THINK A LITTLE DIFFERENTLY. WE TEND TO PUT
EXPERIENCES AND KNOWLEDGE, BOTH ABOUT THE WORLD
AND OURSELVES, ABOVE POSSESSIONS AND THINGS.**

**TO SOME IT MIGHT LOOK LIKE COMING HERE IS RUNNING AWAY FROM
SOMETHING. AND SURE, THERE IS AN ELEMENT OF ESCAPISM TO
PICKING UP, COMING WEST AND PIONEERING ONE'S OWN TRAIL.**

**BUT THE WAY WE SEE IT, IT'S MORE ABOUT WHAT YOU'RE GOING
TO DO. WHAT YOU'RE REALLY AFTER. WHAT YOU CRAVE DEEP DOWN
IN YOUR SOUL SO MUCH AND SO BAD THAT YOU'RE WILLING TO DO
ANYTHING AND EVERYTHING TO GET IT.**

**THESE RIGORS AND REWARDS THE PACIFIC NORTHWEST OFFER
ARE INGRAINED IN OUR VALUES.**

**IT MIGHT BE A PLACE YOU NEED TO VISIT AND REVISIT TO BE YOUR
BEST SELF. A WAY OF LIFE YOU YEARN FOR THAT IS VASTLY DIFFERENT
FROM THE ONE YOU'VE ALWAYS KNOWN.**

**IT'S A COMMITMENT TO SOMETHING YOU FEEL UNEQUIVOCALLY
CALLED TO, OR SIMPLY THE NEED TO STAND UP FOR YOUR BELIEFS
AND WHAT'S RIGHT.**

**TO THOSE OF YOU WHO NOD YOUR HEAD, UNDERSTANDING OF WHAT
WE SPEAK, KNOW THIS:**

WE MAKE OUR BOOTS FOR YOU.

**GO
THERE**

A black and white photograph of a person wearing a wide-brimmed hat and boots, standing on a rocky outcrop on a beach. The person is looking out towards the ocean. The background shows the ocean waves crashing against the shore.

PORTLAND MADE

CHARLES DANNER MOVED HIS OPERATIONS TO PORTLAND, OREGON IN 1936 WHEN HE LEARNED LOGGERS WERE IN NEED OF HIGH-QUALITY, HANDCRAFTED BOOTS THAT COULD STAND UP TO THE RIGORS OF THE PACIFIC NORTHWEST.

In fact, a well-worn pair of Danners served as proof a logger was worth his salt. As the needs of the Northwest evolved, so has our line of products. We've made boots for the shipyard workers building boats for the war effort during the '40s and outfitted hikers, backpackers and mountain climbers as the age of recreation bloomed in the '60s and '70s.

Eventually word of our boots got out, so much so the U.S. Army asked us to design a utilitarian combat boot specifically for troops serving in mountainous regions overseas.

And yet, as we've grown, we've done so on our own terms. We still make each pair with handcrafted precision, using the best possible materials we can find, to create boots built to last.

Which is exactly how we're going to keep making them for as long as we make boots.



TIMELINE

The Beginning

1932

Move to the Pacific Northwest

1936-1950

Birth of USA-Made Hiking Boots

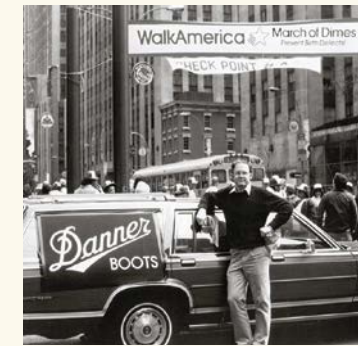
1960-76

First Waterproof Boot with GORE-TEX Liner

1979

Change of Ownership

1983



1932 // Charles Danner opens the doors of Danner Shoe Mfg. Company in the old logging town of Chippewa Falls, Wis. with five employees to build affordable, handcrafted work boots.

1936 // Charles discovers an opportunity to sell calked logging boots in the Pacific Northwest and decides to move his family and the Danner business to **Portland, Oregon**.

1939 // Charles's sons John and Bill join the family business. They both leave their studies at the University of Portland to serve in the military during World War II.

1940's // After the end of the war, John goes to law school and Bill focuses on making boots at Danner.

1950's // Bill expands the product line and opens the company's first retail store.

1960 // Hiking, backpacking and mountain climbing become national trends. Danner becomes one of the only domestic manufacturer of hiking boots.

1970 // Danner designs a medium-weight hiker for broader appeal and becomes the standard for performance, rugged durability and craftsmanship.

1973 // The Danner 6490 launches and delivers the perfect balance of minimal break in with heel and toe protection. This model would later become known as the **Mountain Light** and would launch an entire collection of classic hiking designs.

1979 // Danner's unrelenting commitment to quality leads to the development of construction methods to make wet feet a thing of the past. Using **GORE-TEX** fabric, Danner is the first footwear brand to develop and patent a unique way of making a truly waterproof boot.

1983 // After 50 years, Bill sells his company to Eric Merk under the condition that Eric follow the tradition of quality and craftsmanship the Danner family had built over the years. The company then moves to a new larger facility near the Portland airport.

Specialty Boots for
Military and Law
Enforcement **1983-92**



1983 // Danner expands into hunting footwear and building boots for uniformed personnel, including elite members of the **U.S. Armed Forces and law enforcement.**

1992 // The American Podiatric Medical Association awards Danner boots and Danner Airthotic with the **AMPA seal of acceptance**—yet another nod to the comfort of Danner footwear.

Merge with
LaCrosse Footwear **1994**



1994 // On March 14, Danner merges with LaCrosse Footwear Inc. of LaCrosse, Wis., to form a major force in the footwear industry. Since 1897, the LaCrosse brand has stood for premium-quality, handcrafted rubber footwear.

ISO 9002
Certification **1996**



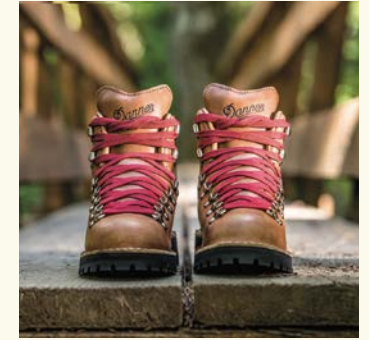
1996 // Danner becomes the first shoe manufacturer in the U.S. to earn ISO 9002 certification. This international set of quality standards helps assure customers that their Danner boots will be made to the highest standards for comfort, durability, support and waterproof protection.

Supporting our
Troops **2010**



2010 // Danner creates premium protective footwear, **co-developing and producing the new standard in combat boots** with the USMC RAT and Army Combat Hiker.

Growth and
Expansion **2010-TODAY**



2010 // The growth of Danner continues with the opening of a world-class 59,000 sq ft factory in Portland, Ore.

2012 // Danner is recognized as being one of the most desirable American fashion brands in the Japanese market.

2014 // The Danner Mountain Light Cascade makes its film debut in the **Fox Searchlight Pictures release of WILD**. Based on Cheryl Strayed's New York Times best-selling book, the film recounts her 1100-mile journey along the Pacific Crest Trail.

NOW // Danner continues to design and manufacture a complete line of hiking, hunting, uniform, work and lifestyle boots in its world-class factory in Portland, Ore.

BUILT TO LAST

IT TAKES YEARS TO LEARN HOW TO MAKE GOOD BOOTS. IT TAKES DECADES TO LEARN HOW TO MAKE GREAT ONES.

We have come by our boot making honestly.

Our techniques have been pioneered and perfected over the past 85 years.

We consider the boots we make to be our boots until they pass to you and become yours. When they do, know they have been individually made with superior craftsmanship and are built to last.

If you take care of your boots, as you would anything you value, they will last as long as you wish to wear them.



THE STANDARDS

OUR BADGE

We are craftsmen. We pay attention to details. We forgo quantity for quality, knowing that the product we build is only as good as the hands that create it.

GRADING LEATHER

The only way to ensure the quality of a Danner boot is to ensure the quality of the materials we use. That's why every hide of leather is graded through a series of six tests, which check for flexibility and durability.

LEATHER CUTTING

Every hide is unique, as is our tradition of both cutting by hand and using the latest in laser technology. It's the only way to guarantee the best part of each hide is used.

DESIGN CONSTRUCTION

Product design is a vast collection of intricate details, from the last the boot is built on, to the stitching that binds each pattern piece together. And to a Danner boot, these are the details that set it apart.

HANDCRAFTING

There are more efficient ways to manufacture a boot but there is only one way to craft a boot with the fit, comfort and durability of a Danner boot – and that's by hand.

BUILT TO LAST

A pair of Danner boots can go a long way. And since many Danner boots can be recrafted by replacing the outsoles, reworking leather, and restitching seams, a pair of Danner boots can last even longer.



GORE-TEX LINERS

In 1979, Danner® became the first boot maker to use GORE-TEX liners. We consider this setting standards, not simply meeting them.



VIBRAM® OUTSOLES

The mark of a true craftsman comes from developing product that withstands the test of time year after year – and Vibram® exemplifies this. And that's why Danner® is proud to develop outsole designs with Vibram®.

RE-CRAFTING

When you invest in a pair of stitchdown Danner boots, you're getting the most durable, long-lasting footwear available. And for when they finally do begin to wear, Danner is proud to offer recrafting services to extend the life of your boots.

From simple part replacement to restitching seams to major overhauls, Danner can provide repair services so your boots can last even longer. Turnaround time varies, depending on the season and scope of work needed.

Unfortunately, not all Danner boots can be recrafted. They must have a stitchdown, not cement, construction. If there is a tear or hole in the leather, Danner is unable to recraft that boot.

To be sure your boots qualify, please contact us at recrafting@danner.com or visit danner.com/recrafting.

DANNER FACTORY STORE | 12021 NE Airport Way | Portland, OR 97220 |
503.251.1111 | recrafting@danner.com | danner.com/recrafting



All recrafting is done at Danner's Factory store in Portland, Oregon.

CONSTRUCTION



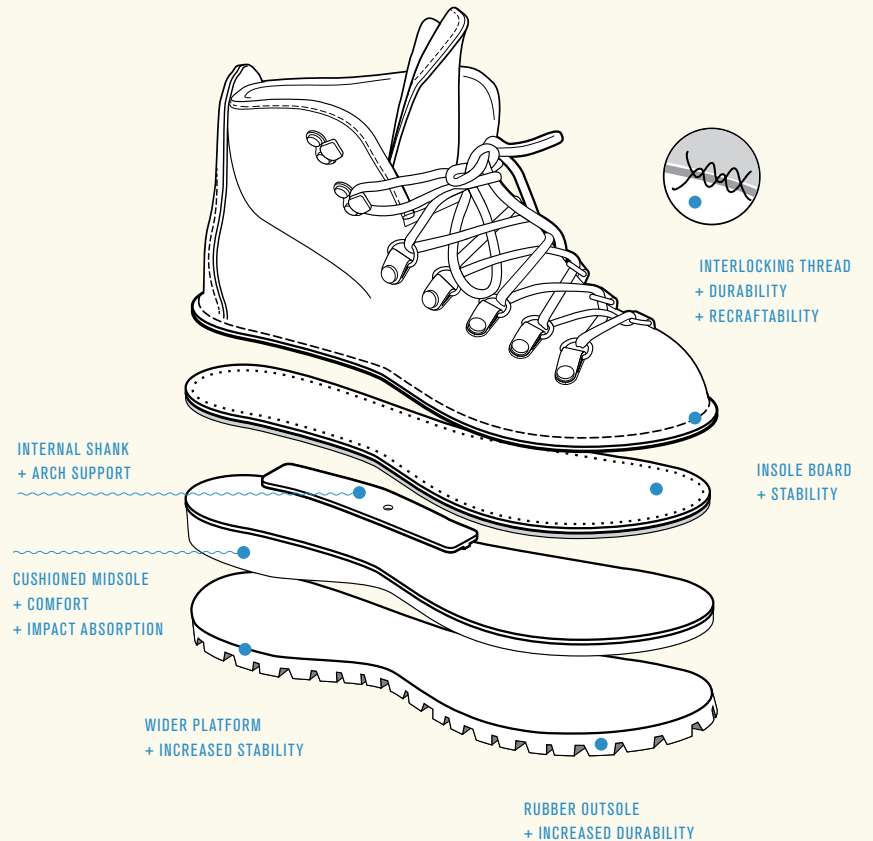
STITCHDOWN CONSTRUCTION
TERRA FORCE NEXT TECHNOLOGY
TERRA FORCE TECHNOLOGY
TRAILGUARD PLATFORM
DANNER COMFORT SYSTEM

A Danner® boot is a mark of unparalleled quality. It's been that way since 1932, the year Charles Danner decided to open his boot making business in the midst of the Great Depression and risk his future on a stubborn belief that—regardless of the economy—superior craftsmanship mattered.

By the 1960s and '70s, Danner stitchdown construction was legendary. It gave our boots a wider, more stable platform.

Over time, we continued to push footwear technology and design—blending heritage and innovation to deliver reliable and durable performance in any environment.

It's much more than just keeping our standards high, it's about making sure the products we create live up to yours.



ORIGINAL STITCHDOWN CONSTRUCTION

Original Stitchdown Construction is Danner's most iconic footwear construction and one of the longest lasting, most durable and stable platforms in the industry.

// STITCHDOWN

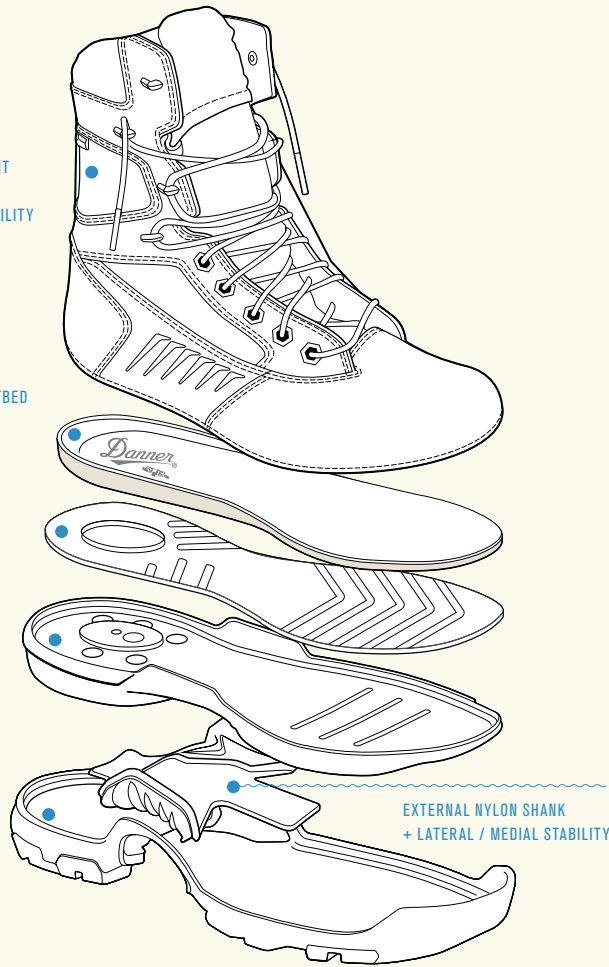
LEGENDARY
STITCHDOWN - CEMENT
CONSTRUCTION
+ LIGHTWEIGHT STABILITY

LIGHTWEIGHT PU FOOTBED
+ COMFORT
+ DURABILITY

BI-FIT BOARD
+ STABILITY
+ RESPONSIVENESS

VIBRAM® SPE MIDSOLE
+ ENERGY RETURN
+ CUSHION

MOLDED RUBBER OUTSOLE
+ INCREASED DURABILITY



EXTERNAL NYLON SHANK
+ LATERAL / MEDIAL STABILITY

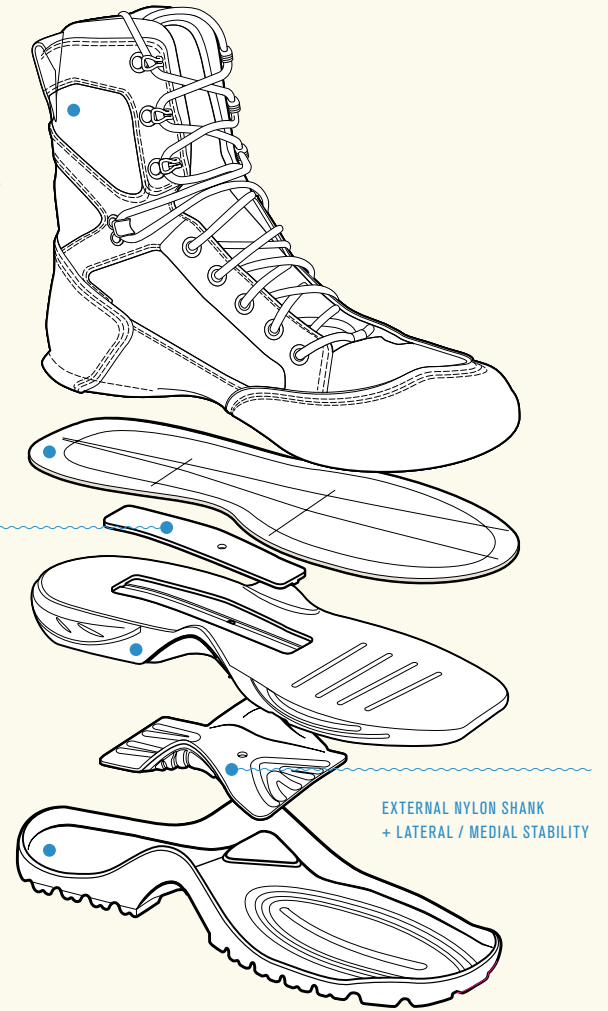
LEGENDARY
STITCHDOWN - CEMENT
CONSTRUCTION
+ LIGHTWEIGHT STABILITY

INSOLE BOARD
+ STABILITY

INTERNAL SHANK
+ ARCH SUPPORT

CUSHIONED MIDSOLE
+ COMFORT
+ IMPACT ABSORPTION

MOLDED RUBBER OUTSOLE
+ INCREASED DURABILITY



EXTERNAL NYLON SHANK
+ LATERAL / MEDIAL STABILITY

TERRA FORCE NEXT TECHNOLOGY

TERRA FORCE® Next™ Technology delivers the legendary performance of TERRA FORCE® with added responsiveness, durability and comfort.

// TFN

TERRA FORCE TECHNOLOGY

TERRA FORCE® Technology utilizes a combination of stitchdown and cement constructions, providing a lightweight platform with superior durability and stability.

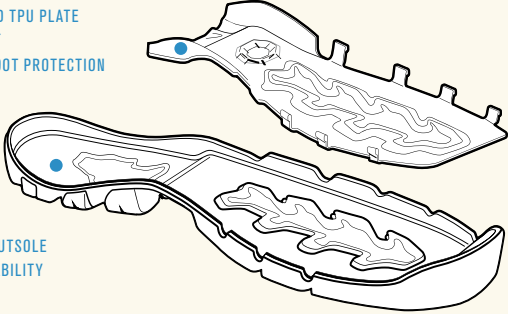
// TF

SEAMLESS CEMENT
CONSTRUCTION
+ LIGHTWEIGHT AGILITY



CUSHIONED MIDSOLE
+ COMFORT
+ IMPACT ABSORPTION

CO-MOLDED TPU PLATE
+ SUPPORT
+ UNDERFOOT PROTECTION



MOLDED RUBBER OUTSOLE
+ INCREASED DURABILITY

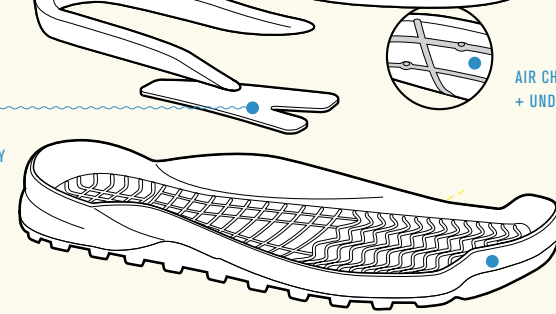
NESTED CEMENT
CONSTRUCTION
+ DURABILITY
+ COMFORT
+ SUPPORT



PATENT-PENDING
FOOTBED / HEEL PAD
+ MAXIMUM CUSHIONING

AIRTHOTIC® HEEL WRAP
+ ENHANCED STABILITY

BROAD TPU SHANK
+ LATERAL/MEDIAL STABILITY



AIR CHANNELS
+ UNDERFOOT VENTING

MOLDED RUBBER OUTSOLE
+ INCREASED DURABILITY

TRAILGUARD PLATFORM

The **Trailguard Platform** is one of our lightest-weight cemented constructions, delivering underfoot protection, support and stability on rugged terrain.

// TRAILGUARD

DANNER COMFORT SYSTEM

The **Danner® Comfort System** is anatomically designed with a broader toe box for a more responsive fit, offering air vents for increased breathability, an Airthotic heel wrap for increased stability and a 15mm thick heel impact zone for increased shock absorption providing a complete package for total foot comfort.

// DCS



OUTDOOR

TRAIL 2650

Trail Ready, Built for Adventure

With 2,650 miles, the Pacific Crest Trail provides a wide variety of terrain over its epic expanse. Whether you're out for the weekend, a few miles or are looking to get some serious mileage, the PCT has something for you. It's that need for versatility that inspired our award-winning Trail 2650. Built to move quickly and confidently through the terrain of your choosing, the Trail 2650 can easily fill the role of a lightweight hiker or trainer. Using a Trailguard TPU shank and an EXO Heel System, the Trail 2650 is both lightweight and provides stability on challenging grounds.



NEW TRAILCOMBER



Ortholite® PlyoGO Vibram MEGAGRIP

- Breathable, abrasion-resistant Cordura® knit upper
- EXO Lite Heel System provides a comfortable, secure fit
- Cushioning open-cell Ortholite® footbed
- Danner® PlyoGo lightweight, shock-absorbing EVA midsole
- Quick-drying construction with drainable midsole for wet environments
- 4mm heel-to-toe drop
- Nylon shank
- Vibram® Litebase technology drastically reduces outsole weight while maintaining the same grip and wear resistance
- Vibram® Trailcomber outsole with Megagrip technology offers superior grip on wet and dry surfaces

STYLE #	HEIGHT	COLOR / PATTERN	WATERPROOF	INSULATION	WEIGHT
63350	3"	Charcoal/Goblin Blue	-	-	19 oz
63351	3"	Lichen/Picante	-	-	19 oz

SIZES AVAILABLE IN WOMEN'S [63352, 63353]. SEE PG. 69.

LAST DT6.4MM

D: 7-14(½ thru 12); EE: 7-14 [½ thru 12]

NEW RIVERCOMBER



Ortholite® PlyoGO Vibram WAVEGRIP

- Breathable, abrasion-resistant Cordura® knit upper
- EXO Lite Heel System provides a comfortable, secure fit
- Cushioning open-cell Ortholite® footbed
- Danner® PlyoGo lightweight, shock-absorbing EVA midsole
- Quick-drying construction with drainable midsole for wet environments
- 4mm heel-to-toe drop
- Nylon shank
- Vibram® Wavegrip non-marking outsole directs water away from the foot for ultimate grip on wet surfaces

STYLE #	HEIGHT	COLOR / PATTERN	WATERPROOF	INSULATION	WEIGHT
63300	3"	Goblin Blue/Charcoal	-	-	22 oz
63301	3"	Red/Orange	-	-	22 oz

SIZES AVAILABLE IN WOMEN'S [63302, 63303]. SEE PG. 69.

LAST DT6.4MM

D: 8-14(½ thru 12); EE: 8-14 [½ thru 12]

TRAIL 2650



NEW 61282



61200



61201



61270



61271



61272



61275

GORE-TEX OrthoLite // **TRAILGUARD** PlyoGO  **MEGAGRIP**

- Lightweight, durable suede and textile upper
- GORE-TEX waterproof breathable lining [61200, 61201]
- Breathable mesh lining [61270, 61271, 61272, 61275, 61282]
- EXO Heel System provides maximum support and comfort with a reinforced external heel counter
- Cushioning open-cell OrthoLite® footbed
- TRAILGUARD platform with exposed TPU shank offers lightweight, athletic performance
- Danner® PlyoGo lightweight, shock-absorbing EVA midsole
- 8mm heel-to-toe drop
- Vibram® 460 outsole with Megagrip technology offers superior grip on wet and dry surfaces

STYLE #	HEIGHT	COLOR / PATTERN	WATERPROOF	INSULATION	WEIGHT
61200	3"	Dark Gray/Brick Red	✓	-	27 oz
61201	3"	Denim Blue	✓	-	27 oz
61270	3"	Dark Brown/Green	-	-	24 oz
61271	3"	Brick Red	-	-	24 oz
61272	3"	Brown/Red	-	-	24 oz
61275	3"	Black/Gray	-	-	24 oz
61282	3"	Charcoal/Goblin Blue	-	-	24 oz

SIZES AVAILABLE IN WOMEN'S [61202, 61203, 61273, 61274]. SEE PG. 70.

LAST DT6

61200, 61201, 61270, 61271, 61272, 61282 D: 7-15 (½ thru 12); EE: 8-14 (½ thru 12)

61275 D: 7-13 (½ thru 12)

NEW TRAIL 2650 - FULL GRAIN



61276



61277



61278

OrthoLite // TRAILGUARD PlyoGO   MEGAGRIP

- Durable, full-grain leather and nylon upper
- Breathable mesh lining
- EXO Heel System provides maximum support and comfort with a reinforced external heel counter
- Cushioning open-cell OrthoLite® footbed
- TRAILGUARD platform with exposed TPU shank offers lightweight, athletic performance
- Danner® PlyoGo lightweight, shock-absorbing EVA midsole
- 8mm heel-to-toe drop
- Vibram® 460 outsole with Megagrip technology offers superior grip on wet and dry surfaces

STYLE #	HEIGHT	COLOR / PATTERN	WATERPROOF	INSULATION	WEIGHT
61276	3"	Dark Shadow	-	-	24 oz
61277	3"	Dark Earth	-	-	24 oz
61278	3"	Prairie Sand	-	-	24 oz

SIZES AVAILABLE IN WOMEN'S [61279, 61285]. SEE PG. 71.

LAST DT6

D: 7-14(½ thru 12)

TRAIL 2650 MID



61240



61241

GORE-TEX OrthoLite // TRAILGUARD PlyoGO   MEGAGRIP

- Lightweight, durable suede and textile upper
- GORE-TEX waterproof breathable lining
- EXO Heel System provides maximum support and comfort with a reinforced external heel counter
- Cushioning open-cell OrthoLite® footbed
- TRAILGUARD platform with exposed TPU shank offers lightweight, athletic performance
- Danner® PlyoGo lightweight, shock-absorbing EVA midsole
- 8mm heel-to-toe drop
- Vibram® 460 outsole with Megagrip technology offers superior grip on wet and dry surfaces

STYLE #	HEIGHT	COLOR / PATTERN	WATERPROOF	INSULATION	WEIGHT
61240	4"	Dusty Olive	✓	-	28 oz
61241	4"	Brown/Gold	✓	-	28 oz

SIZES AVAILABLE IN WOMEN'S [61242]. SEE PG. 71.

LAST DT6

D: 7-14(½ thru 12); EE: 7-14 (½ thru 12)

LOST COAST SANDAL



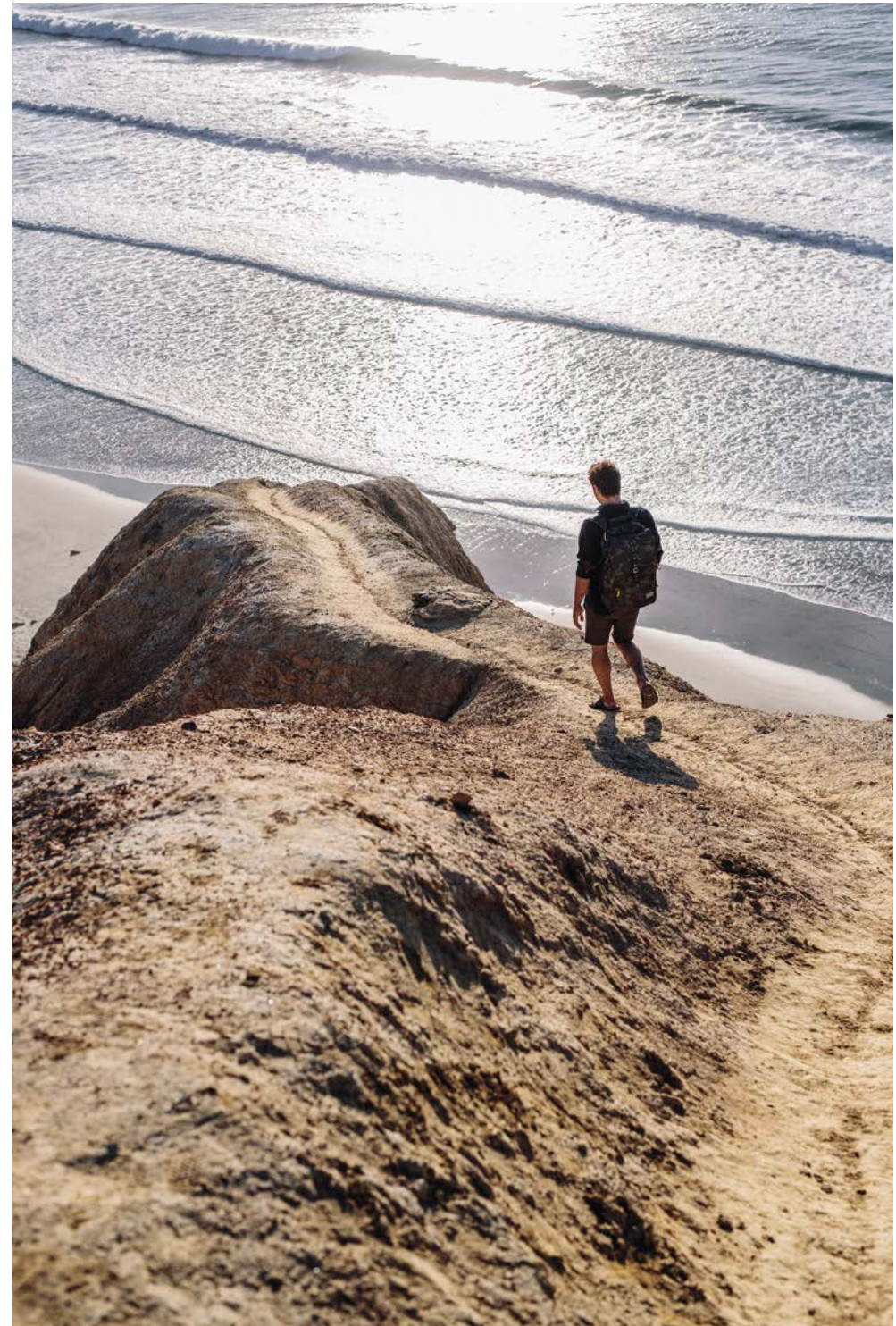
- Full-grain leather and neoprene upper
- Premium leather footbed
- Lightweight, shock-absorbing Vibram® EVA midsole
- Vibram® Black Sands outsole with Megagrip technology offers superior grip on wet and dry surfaces

STYLE #	HEIGHT	COLOR / PATTERN	WATERPROOF	INSULATION	WEIGHT
68131	-	Barley	-	-	16 oz
68132	-	Black	-	-	16 oz
68133	-	Sand Dune	-	-	16 oz
68134	-	Gray/Kombu Green	-	-	16 oz

SIZES

LAST 827

M: 6-14 (whole sizes only)



NEW VITAL TRAIL



65301

65300

DANNER® DRY

- Abrasion-resistant leather and textile upper
- Danner® Dry waterproof protection
- Lock and load lacing system: ghillies across the forefoot for secure fit and locking speed hooks for quick, quiet lacing
- Mesh liner layered over Danner® Dry on tongue to help regulate both moisture and temperature
- Multi-density foam patterning eliminates hotspots and pinch points
- Molded, open-cell PU footbed
- Danner® Plyolite™ EVA midsole offers lasting support and rebound
- Nylon shank
- TPU heel clip for enhanced support and stability
- Danner® Vital outsole provides grip on moss, rock and slick surfaces

STYLE #	HEIGHT	COLOR / PATTERN	WATERPROOF	INSULATION	WEIGHT
65300	6"	Coffee Brown	✓	-	42 oz
65301	6"	Brown/Olive	✓	-	42 oz

SIZES

LAST DT4

D: 7-14 [½ thru 12]; EE: 8-14 [½ thru 12]

CAMP SHERMAN



NEW 63252

NEW 63254

63251

63255

Ortholite®

- Durable suede upper [63252, 63254, 63255]
- Full-grain leather upper [63251]
- Breathable mesh lining
- Cushioning open-cell OrthoLite® footbed
- Danner® Plyolite™ EVA midsole offers lasting support and rebound
- Nylon shank
- Vibram® Approach outsole with multi-directional lugs for extra traction and surface contact

STYLE #	HEIGHT	COLOR / PATTERN	WATERPROOF	INSULATION	WEIGHT
63251	3"	Dark Brown/Orange	-	-	26 oz
63252	3"	Brown/Brindle	-	-	26 oz
63254	3"	Dark Earth/Picante	-	-	26 oz
63255	3"	Gray/Green	-	-	26 oz

SIZES

LAST DPDX

D: 8-14 [½ thru 12]; EE: 8-13 [½ thru 12]

EXPLORER 650



DANNER® DRY OrthoLite® Vibram® MEGAGRIP

- Durable suede and nylon upper
- Danner® Dry waterproof protection
- Cushioning open-cell OrthoLite® footbed
- Vibram® SPE midsole for maximum rebound, comfort and support
- Exposed TPU shank
- Custom Vibram® Escape outsole with Megagrip technology offers superior grip on wet and dry surfaces

STYLE #	HEIGHT	COLOR / PATTERN	WATERPROOF	INSULATION	WEIGHT
65711	6"	Brown/Olive	✓	-	34 oz
65713	6"	Sand	✓	-	34 oz

SIZES AVAILABLE IN WOMEN'S [65718]. SEE PG. 75.

LAST DPDX

D: 7-14 [½ thru 12]; EE: 8-13 [½ thru 12]

EXPLORER 650 - FULL GRAIN



DANNER® DRY OrthoLite® Vibram® MEGAGRIP

- Durable, full-grain leather and nylon upper
- Danner® Dry waterproof protection
- Cushioning open-cell OrthoLite® footbed
- Vibram® SPE midsole for maximum rebound, comfort and support
- Exposed TPU shank
- Custom Vibram® Escape outsole with Megagrip technology offers superior grip on wet and dry surfaces

STYLE #	HEIGHT	COLOR / PATTERN	WATERPROOF	INSULATION	WEIGHT
32241	6"	Khaki	✓	-	33 oz
65714	6"	Brown/Green	✓	-	33 oz

SIZES AVAILABLE IN WOMEN'S [65715, 65717]. SEE PG. 75.

LAST DPDX

D: 7-14 [½ thru 12]; EE: 8-13 [½ thru 12]

MOUNTAIN 600



DANNER® DRY Ortholite® Vibram® MEGAGRIP

- Waterproof suede upper
- Danner® Dry waterproof protection
- Cushioning open-cell OrthoLite® footbed
- Vibram® SPE midsole for maximum rebound, comfort and support
- Nylon shank
- TPU heel frame to enhance support and stability
- Vibram® Fuga outsole with Megagrip technology offers superior grip on wet and dry surfaces

STYLE #	HEIGHT	COLOR / PATTERN	WATERPROOF	INSULATION	WEIGHT
36232	4.5"	Sandy Taupe	✓	-	37 oz
36233	4.5"	Java/Bossa Nova	✓	-	37 oz
62241	4.5"	Brown/Red	✓	-	37 oz
62243	4.5"	Dark Brown/Green	✓	-	37 oz
62254	4.5"	Sand	✓	-	37 oz

SIZES AVAILABLE IN WOMEN'S [36235, 62245, 62256]. SEE PG. 73.

LAST DPDX

36232, 36233 D: 7-13 [½ thru 12]

62241, 62243 D: 7-14 [½ thru 12]; EE: 8-13 [½ thru 12]

62254 D: 7-14 [½ thru 12]; EE: 8-14 [½ thru 12]

MOUNTAIN 600 - FULL GRAIN



DANNER® DRY Ortholite® Vibram® MEGAGRIP

- Durable full-grain leather upper
- Danner® Dry waterproof protection
- Two lace options [62242, 62246]
- Cushioning open-cell OrthoLite® footbed
- Vibram® SPE midsole for maximum rebound, comfort and support
- Nylon shank
- TPU heel frame to enhance support and stability
- Vibram® Fuga outsole with Megagrip technology offers superior grip on wet and dry surfaces

STYLE #	HEIGHT	COLOR / PATTERN	WATERPROOF	INSULATION	WEIGHT
62242	4.5"	Black	✓	-	37 oz
62246	4.5"	Saddle Tan	✓	-	37 oz
62248	4.5"	Carbon Black	✓	-	37 oz
62250	4.5"	Rich Brown	✓	-	37 oz
62272	4.5"	Walnut/Green	✓	-	37 oz

SIZES AVAILABLE IN WOMEN'S [62251, 62259, 62260, 62268]. SEE PG. 73.

LAST DPDX

62242, 62246 D: 7-13 [½ thru 12]

62248, 62250, 62272 D: 7-15 [½ thru 12]; EE: 8-14 [½ thru 12]

MOUNTAIN 600 - ENDUROWEAVE



62280

62281

OrthoLite® Vibram® MEGAGRIP

- Durable, breathable textile upper
- Cushioning open-cell OrthoLite® footbed
- Vibram® SPE midsole for maximum rebound, comfort and support
- Nylon shank
- TPU heel frame to enhance support and stability
- Vibram® Fuga outsole with Megagrip technology offers superior grip on wet and dry surfaces

STYLE #	HEIGHT	COLOR / PATTERN	WATERPROOF	INSULATION	WEIGHT
62280	4.5"	Brown	-	-	34 oz
62281	4.5"	Black	-	-	34 oz

SIZES AVAILABLE IN WOMEN'S [62283]. SEE PG. 74.

LAST DPDX

D: 8-14 [½ thru 12]; EE: 8-14 [½ thru 12]

MOUNTAIN 600 - INSULATED



62144

62145

PRIMALOFT® DANNER® DRY OrthoLite® Vibram® ARCTIC GRIP

- Premium full-grain leather upper with 200G PrimaLoft® insulation
- Danner® Dry waterproof protection
- Cushioning open-cell OrthoLite® footbed
- Vibram® SPE midsole for maximum rebound, comfort and support
- Nylon shank
- TPU heel frame to enhance support and stability
- Vibram® Nisqually Arctic Grip outsole with Arctic Grip technology offers superior grip on wet and dry surfaces

STYLE #	HEIGHT	COLOR / PATTERN	WATERPROOF	INSULATION	WEIGHT
62144	4.5"	Brown/Red	✓	200G	40 oz
62145	4.5"	Jet Black	✓	200G	40 oz

SIZES AVAILABLE IN WOMEN'S [62146]. SEE PG. 74.

LAST DPDX

D: 7-14 [½ thru 12]; EE: 8-14 [½ thru 12]

MOUNTAIN 600 LOW



62262

DANNER® DRY OrthoLite® Vibram® MEGAGRIP

- Waterproof suede upper
- Danner® Dry waterproof protection
- Cushioning open-cell OrthoLite® footbed
- Vibram® SPE midsole for maximum rebound, comfort and support
- Nylon shank
- TPU heel frame to enhance support and stability
- Vibram® Fuga outsole with Megagrip technology offers superior grip on wet and dry surfaces

STYLE #	HEIGHT	COLOR / PATTERN	WATERPROOF	INSULATION	WEIGHT
62262	3"	Dark Brown/Lichen	✓	-	32 oz

SIZES LAST DPDX

D: 7-14 [½ thru 12]; EE: 8-13 [½ thru 12]

SOUTH RIM 600



64310

OrthoLite® Vibram® MEGAGRIP

- Suede and textile upper
- Cushioning open-cell OrthoLite® footbed
- Vibram® SPE midsole for maximum rebound, comfort and support
- Nylon shank
- TPU heel frame to enhance support and stability
- Vibram® Fuga outsole with Megagrip technology offers superior grip on wet and dry surfaces

STYLE #	HEIGHT	COLOR / PATTERN	WATERPROOF	INSULATION	WEIGHT
64310	4"	Sand	-	-	32 oz

SIZES LAST DPDX

D: 8-14 [½ thru 12]; EE: 8-13 [½ thru 12]

TRAILTREK LIGHT



61381

61380

DANNER® DRY OrthoLite®

- Durable suede and nylon upper
- Danner® Dry waterproof protection
- Abrasion-resistant toe and heel
- Cushioning open-cell OrthoLite® footbed
- Danner® Plyolite™ rubberized EVA midsole for support
- Nylon shank
- Streamlined, athletic platform for comfort and responsiveness
- Danner® Alpine Ascender Light outsole offers a lightweight platform for stability and traction on rugged terrain

STYLE #	HEIGHT	COLOR / PATTERN	WATERPROOF	INSULATION	WEIGHT
61380	3"	Brown/Red	✓	-	34 oz
61381	3"	Gray/Blue	✓	-	34 oz

SIZES

LAST DPDX

D: 7-14 [½ thru 12]; EE: 8-13 [½ thru 12]

ARCTIC 600 CHELSEA



67372

67370

PRIMALOFT® DANNER® DRY OrthoLite® Vibram® ARCTIC GRIP®

- Premium suede upper with 200G PrimaLoft® insulation
- Danner® Dry waterproof protection
- Cushioning open-cell OrthoLite® footbed
- Vibram® SPE midsole for maximum rebound, comfort and support
- Nylon shank
- TPU heel frame to enhance support and stability
- Vibram® Nisqually Arctic Grip outsole with Arctic Grip technology offers superior grip on wet and dry surfaces

STYLE #	HEIGHT	COLOR / PATTERN	WATERPROOF	INSULATION	WEIGHT
67370	5"	Brown	✓	200G	35 oz
67372	5"	Black	✓	200G	35 oz

D: 7-14 [½ thru 12]

ARCTIC 600 SIDE-ZIP



67330

67331



- Premium suede upper with 200G PrimaLoft® insulation
- Danner® Dry waterproof protection
- Semi-locking YKK® Side-Zip
- Cushioning open-cell OrthoLite® footbed
- Vibram® SPE midsole for maximum rebound, comfort and support
- Nylon shank
- TPU heel frame to enhance support and stability
- Vibram® Nisqually Arctic Grip outsole with Arctic Grip technology offers superior grip on wet and dry surfaces

STYLE #	HEIGHT	COLOR / PATTERN	WATERPROOF	INSULATION	WEIGHT
67330	7"	Brown/Red	✓	200G	45 oz
67331	7"	Jet Black	✓	200G	45 oz

SIZES AVAILABLE IN WOMEN'S [67332,67333]. SEE PG. 76.

LAST DPDX

67330 D: 7-14 [1/2 thru 12]; EE: 8-14 [1/2 thru 12]

67331 D: 7-14 [1/2 thru 12]; EE: 8-13 [1/2 thru 12]

CRATER RIM



37440



- **Made in the USA**
- Durable, waterproof nubuck leather upper
- 360° abrasion-resistant Vibram® rubber rand
- GORE-TEX waterproof breathable lining
- D-ring hardware and lace-to-toe design for secure fit
- Cushioning PU footbed
- Fiberglass shank
- Vibram® Bifida outsole offers superior traction on rugged terrain

STYLE #	HEIGHT	COLOR / PATTERN	WATERPROOF	INSULATION	WEIGHT
37440	6"	Brown	✓	-	60 oz

SIZES AVAILABLE IN WOMEN'S [37414]. SEE PG. 77.

LAST 610

R: 7-15 [1/2 thru 12]; W: 8-13 [1/2 thru 12]

RADICAL 452



45254

45260

GORE-TEX // TF

- Durable nubuck leather upper with rugged 1000 denier nylon
- Abrasion-resistant toe cap
- GORE-TEX waterproof breathable lining
- Lightweight, shock-absorbing EVA midsole
- Thermoplastic PU shank
- TERRA FORCE® platform offers lightweight performance and stability
- Danner® Boulder TF outsole with multi-directional lugs offers stability on rugged terrain

STYLE #	HEIGHT	COLOR / PATTERN	WATERPROOF	INSULATION	WEIGHT
45254	5.5"	Dark Brown	✓	-	46 oz
45260	5.5"	Olive	✓	-	46 oz

SIZES **LAST** 850

45254 D: 7-14 [½ thru 12]; EE: 8-13 [½ thru 12]

45260 D: 7-14 [½ thru 12]; EE: 8-14 [½ thru 12]

453



45382

45364

37510

GORE-TEX // TFX

- Durable, full-grain leather upper with abrasion-resistant toe cap [37510]
- Durable, nubuck leather upper with abrasion-resistant toe cap [45364, 45382]
- GORE-TEX waterproof breathable lining
- Speed lacing system for secure, enhanced fit
- Cushioning Danner® Fatigue Fighter footbed
- Lightweight, shock-absorbing EVA midsole
- Thermoplastic PU shank
- TERRA FORCE® X platform offers lightweight performance and stability
- Danner® Approach TFX® outsole offers instant acceleration over rugged terrain

STYLE #	HEIGHT	COLOR / PATTERN	WATERPROOF	INSULATION	WEIGHT
37510	5.5"	Brown	✓	-	50 oz
45364	5.5"	Dark Tan	✓	-	48 oz
45382	5.5"	Steel Gray	✓	-	48 oz

SIZES **LAST** 850

D: 7-15 [½ thru 12]; EE: 8-13 [½ thru 12]

MT. ADAMS



65810

GORE-TEX
PROOF

OrthoLite®



- **Made in the USA with imported components**
- Durable, full-grain leather and nylon upper with abrasion-resistant toe cap
- GORE-TEX waterproof breathable lining
- Speed lacing system for secure, enhanced fit
- Cushioning open-cell OrthoLite® footbed
- PU Midsole
- Nylon shank
- Vibram® Mt. Adams outsole offers superior traction on rugged terrain

STYLE #	HEIGHT	COLOR / PATTERN	WATERPROOF	INSULATION	WEIGHT
65810	4.5"	Brown	✓	-	48 oz

SIZES

LAST 851

D: 7-14 [1/2 thru 12]; EE: 8-13 [1/2 thru 12]

INSTIGATOR



47000

GORE-TEX
PROOF

// TFX

- Durable, full-grain leather upper with abrasion-resistant toe cap
- GORE-TEX waterproof breathable lining
- Lightweight, shock-absorbing EVA midsole
- Thermoplastic PU shank
- TERRA FORCE® X platform offers lightweight performance and stability
- Danner® Approach TFX® outsole offers instant acceleration over rugged terrain

STYLE #	HEIGHT	COLOR / PATTERN	WATERPROOF	INSULATION	WEIGHT
47000	6"	Brown	✓	-	53 oz

SIZES

LAST 850

D: 7-14 [1/2 thru 12]; EE: 9-13 [1/2 thru 12]

CRAG RAT USA®



67810

GORE-TEX® Ortholite® 



- Made in the USA with imported components
- Durable, waterproof nubuck leather upper
- 360° abrasion-resistant Vibram® rubber rand
- GORE-TEX waterproof breathable lining
- Cushioning open-cell OrthoLite® footbed
- D-ring hardware with double hook for custom lacing
- Danner® DRS platform to help support heavy loads
- Vibram® Tsavo outsole provides superior grip on rugged, high-elevation terrain

STYLE #	HEIGHT	COLOR / PATTERN	WATERPROOF	INSULATION	WEIGHT
67810	7"	Brown/Green	✓	-	59 oz

SIZES

LAST 851

D: 7-15 [½ thru 12]; EE: 8-15 [½ thru 12]

MOUNTAIN LIGHT II



30800

30860

GORE-TEX® // STITCHDOWN 



- Made in the USA
- Durable, one-piece full-grain leather upper
- GORE-TEX waterproof breathable lining
- Danner® Airthotic® heel cradle and arch support
- Fiberglass shank
- Handcrafted, stitchdown construction for strength and stability
- Vibram® 148 Kletterlift outsole offers superior traction, stability and shock absorption on rugged terrain
- Recraftable

STYLE #	HEIGHT	COLOR / PATTERN	WATERPROOF	INSULATION	WEIGHT
30800	5"	Brown	✓	-	62 oz
30860	5"	Black	✓	-	62 oz

SIZES AVAILABLE IN WOMEN'S [30800]. SEE PG. 78.

LAST 650

D: 7-15 [½ thru 12]; EE: 6-13 [½ thru 12]

DANNER® LIGHT II



33000

33020

GORE-TEX® // STITCHDOWN 



- Made in the USA
- Durable, full-grain leather upper with 1000 denier nylon [33020]
- Durable, nubuck leather upper with 1000 denier nylon [33000]
- GORE-TEX waterproof breathable lining
- Danner® Airthotic® heel cradle and arch support
- Fiberglass shank
- Handcrafted, stitchdown construction for strength and stability
- Vibram® 148 Kletterlift outsole offers superior traction, stability and shock absorption on rugged terrain
- Recraftable

STYLE #	HEIGHT	COLOR / PATTERN	WATERPROOF	INSULATION	WEIGHT
33000	6"	Brown	✓	-	61 oz
33020	6"	Dark Brown	✓	-	61 oz

SIZES AVAILABLE IN WOMEN'S [33000]. SEE PG. 78.

LAST 650

D: 7-14 [½ thru 12]; EE: 8-13 [½ thru 12]

EXPLORER



45200

GORE-TEX® // STITCHDOWN 



- Made in the USA
- Durable, full-grain leather upper
- GORE-TEX waterproof breathable lining
- Danner® Airthotic® heel cradle and arch support
- Fiberglass shank
- Handcrafted, stitchdown construction for strength and stability
- Vibram® 148 Kletterlift outsole offers superior traction, stability and shock absorption on rugged terrain
- Recraftable

STYLE #	HEIGHT	COLOR / PATTERN	WATERPROOF	INSULATION	WEIGHT
45200	6"	Brown	✓	-	63 oz

SIZES AVAILABLE IN WOMEN'S [45200]. SEE PG. 77.

LAST 650

D: 7-14 [½ thru 12]; EE: 6-13 [½ thru 12]

A wide-angle photograph of a coastal scene. In the foreground, a rugged, tan-colored rock formation slopes down towards the left. A small figure of a person stands on the crest of the rocks, looking out over the sea. The ocean is a deep, vibrant blue, with white-capped waves breaking against the base of the cliff. The horizon line is straight and clear, meeting a pale, clear sky. The overall mood is serene and expansive.

LIFESTYLE

CAPRINE LOW SUEDE

Sure Footing for Urban Exploring

When our team set out to create the ultimate city hiker, superior traction was top of mind. Our designers took inspiration from nature and teamed up with Vibram® to take on the challenge. The result is the Caprine. With an outsole design based on mountain goat hoofs, we created the grippiest Danner in our line – perfect for both on and off-road adventures. New for 2020, the durable suede upper with rubber toe bumper provides the ideal balance of comfort and protection. With its understated style and advanced technology, the Caprine is built for the most discerning urban explorer.



CAPRINE



OrthoLite®  MEGAGRIP

- Durable nubuck and abrasion-resistant knit upper
- Water resistant and stain-proof DWR coated knit upper
- Cushioning open-cell OrthoLite® footbed
- Danner® Plyolite™ EVA midsole offers lasting support and rebound
- TPU shank
- Exclusive Vibram® Caprine Traction outsole with Megagrip technology features increased surface contact for superior grip from city to trail

STYLE #	HEIGHT	COLOR / PATTERN	WATERPROOF	INSULATION	WEIGHT
31360	4"	Olive/Pinecone	-	-	26 oz
31361	4"	Taupe/Glazed Ginger	-	-	26 oz
31362	4"	Gray	-	-	26 oz
31363	4"	Kombu/Wood Smoke	-	-	26 oz

SIZES AVAILABLE IN WOMEN'S [31364, 31365]. SEE PG. 79.

LAST 808

D: 7-14 [1/2 thru 12]

NEW CAPRINE LOW SUEDE



OrthoLite®  MEGAGRIP

- Durable suede upper
- Cushioning open-cell OrthoLite® footbed
- Danner® Plyolite™ EVA midsole offers lasting support and rebound
- TPU shank
- Exclusive Vibram® Caprine Traction outsole with Megagrip technology features increased surface contact for superior grip from city to trail

STYLE #	HEIGHT	COLOR / PATTERN	WATERPROOF	INSULATION	WEIGHT
31328	3"	Plaza Taupe	-	-	24 oz
31329	3"	Deep Lichen	-	-	27 oz

SIZES AVAILABLE IN WOMEN'S [31330, 31331]. SEE PG. 80.

LAST 808

D: 7-14 [1/2 thru 12]

CAPRINE LOW



NEW 31324



NEW 31325



31320



31321



31322



31323

OrthoLite®   MEGAGRIP

- Durable nubuck and abrasion-resistant knit upper
- Water resistant and stain-proof DWR coated knit upper
- Cushioning open-cell OrthoLite® footbed
- Danner® Plyolite™ EVA midsole offers lasting support and rebound
- TPU shank
- Exclusive Vibram® Caprine Traction outsole with Megagrip technology features increased surface contact for superior grip from city to trail

STYLE #	HEIGHT	COLOR / PATTERN	WATERPROOF	INSULATION	WEIGHT
31320	3"	Olive/Pinecone	-	-	24 oz
31321	3"	Taupe/Glazed Ginger	-	-	24 oz
31322	3"	Black/Black	-	-	24 oz
31323	3"	Gray	-	-	24 oz
31324	3"	Deep Lichen/Kombu	-	-	24 oz
31325	3"	Rock Ridge/Sable	-	-	24 oz

SIZES AVAILABLE IN WOMEN'S [31326, 31327]. SEE PG. 79.

LAST 808

D: 7-14 [½ thru 12]

CAPRINE EVO



31280

31281

DANNER® DRY Ortholite® Vibram® MEGAGRIP

- Durable leather and nylon upper
- Danner® Dry waterproof protection
- Cushioning open-cell Ortholite® footbed
- Danner® Plyolite™ EVA midsole offers lasting support and rebound
- TPU shank
- Exclusive Vibram® Caprine Traction outsole with Megagrip technology features increased surface contact for superior grip from city to trail

STYLE #	HEIGHT	COLOR / PATTERN	WATERPROOF	INSULATION	WEIGHT
31280	4.5"	Tortoise/Black	✓	-	32 oz
31281	4.5"	Chocolate/Taupe	✓	-	32 oz

SIZES AVAILABLE IN WOMEN'S [31283, 31284]. SEE PG. 80.

LAST 808

D: 7-13 [½ thru 12]

NEW JUNGLE 917



32721

32720

Ortholite® Vibram®

- Durable suede and nylon upper
- Breathable mesh lining
- Cushioning open-cell Ortholite® footbed
- Vibram® SPE midsole for maximum rebound, comfort and support
- TPU shank
- Exclusive Vibram® 917 outsole featuring XS Trek® for optimal traction in urban environments
- Modernized stitchdown construction for classic Danner look and added stability

STYLE #	HEIGHT	COLOR / PATTERN	WATERPROOF	INSULATION	WEIGHT
32720	4.5"	Goblin Blue	-	-	32 oz
32721	4.5"	Rock Ridge	-	-	32 oz

SIZES AVAILABLE IN WOMEN'S [32722]. SEE PG. 81.

LAST 971X

D: 7-14 [½ thru 12]

VERTIGO 917



GORE-TEX Ortholite® Vibram®

- Durable full-grain leather upper [32380, 32381, 32382, 32384]
- Durable nubuck upper [32388]
- GORE-TEX waterproof breathable lining
- Cushioning open-cell OrthoLite® footbed
- Vibram® SPE midsole for maximum rebound, comfort and support
- Exclusive Vibram® 917 outsole featuring XS Trek® for optimal traction in urban environments
- Modernized stitchdown construction for classic Danner look and added stability

STYLE #	HEIGHT	COLOR / PATTERN	WATERPROOF	INSULATION	WEIGHT
32380	5"	Black	✓	-	35 oz
32381	5"	Light Brown	✓	-	35 oz
32382	5"	Dark Gray	✓	-	35 oz
32384	5"	Java	✓	-	35 oz
32388	5"	Brindle	✓	-	35 oz

SIZES AVAILABLE IN WOMEN'S [32385, 32386, 32389]. SEE PG. 81.

LAST 971X

32380, 32381, 32382, 32384 D: 7-13 [½ thru 12]

32388 D: 7-14 [½ thru 12]

TRAMLIN 917



GORE-TEX Ortholite® Vibram®

- Durable suede upper [32534]
- Durable nubuck upper [32531]
- GORE-TEX waterproof breathable lining
- Cushioning open-cell OrthoLite® footbed
- Vibram® SPE midsole for maximum rebound, comfort and support
- Exclusive Vibram® 917 outsole featuring XS Trek® for optimal traction in urban environments
- Modernized stitchdown construction for classic Danner look and added stability

STYLE #	HEIGHT	COLOR / PATTERN	WATERPROOF	INSULATION	WEIGHT
32531	4"	Brown	✓	-	32 oz
32534	4"	Tan	✓	-	32 oz

SIZES

LAST 971X

D: 7-13 [½ thru 12]

NEW JAG - NON-WATERPROOF



37240

Ortholite®

- Durable suede and textile upper
- Breathable mesh lining
- Two lace options
- Cushioning open-cell OrthoLite® footbed
- Lightweight, shock-absorbing EVA midsole
- Danner® Waffle rubber outsole with classic hiking tread pattern

STYLE #	HEIGHT	COLOR / PATTERN	WATERPROOF	INSULATION	WEIGHT
37240	4.5"	Brown/Goblin Blue	-	-	34 oz

SIZES AVAILABLE IN WOMEN'S [37242]. SEE PG. 82.

LAST DPDX

D: 7-14 [1/2 thru 12]

JAG



37352



37344



37345

DANNER® DRY Ortholite®

- Durable suede and textile [37344, 37345] or nubuck and textile [37352] upper
- Danner® Dry waterproof protection
- Two lace options
- Cushioning open-cell OrthoLite® footbed
- Lightweight, shock-absorbing EVA midsole
- Danner® Waffle rubber outsole with classic hiking tread pattern

STYLE #	HEIGHT	COLOR / PATTERN	WATERPROOF	INSULATION	WEIGHT
37344	4.5"	Carbon Black	✓	-	34 oz
37345	4.5"	Sandy Taupe	✓	-	34 oz
37352	4.5"	Steel Gray/Blue Wing	✓	-	34 oz

SIZES AVAILABLE IN WOMEN'S [37346, 37347, 37356, 37357]. SEE PG. 83.

LAST DPDX

D: 7-13 [1/2 thru 12]

JAG - FULL GRAIN



NEW 32230

37351

DANNER® DRY OrthoLite®

- Premium full-grain leather and textile upper
- Danner® Dry waterproof protection
- Two lace options
- Cushioning open-cell OrthoLite® footbed
- Lightweight, shock-absorbing EVA midsole
- Danner® Waffle rubber outsole with classic hiking tread pattern

STYLE #	HEIGHT	COLOR / PATTERN	WATERPROOF	INSULATION	WEIGHT
32230	4.5"	Monk's Robe/Wood Thrush	✓	-	34 oz
37351	4.5"	Brown/Khaki	✓	-	34 oz

SIZES AVAILABLE IN WOMEN'S [32231, 37359]. SEE PG. 83.

LAST DPDX

D: 7-13 [1½ thru 12]

JAG LOW



NEW 37400

37395

NEW 37402

37396

37397

OrthoLite®

- Durable suede and textile [37395, 37397, 37402] upper
- Nubuck and textile [37396, 37400] upper
- Breathable mesh lining
- Two lace options
- Cushioning open-cell OrthoLite® footbed
- Lightweight, shock-absorbing EVA midsole
- Danner® Waffle rubber outsole with classic hiking tread pattern

STYLE #	HEIGHT	COLOR / PATTERN	WATERPROOF	INSULATION	WEIGHT
37395	3"	Timber Wolf/Glazed Ginger	-	-	29 oz
37396	3"	Monk's Robe/Chili Pepper	-	-	29 oz
37397	3"	Burro Brown/True Blue	-	-	29 oz
37400	3"	Brown/Summer Wheat	-	-	29 oz
37402	3"	Dark Earth/Goblin Blue	-	-	29 oz

SIZES AVAILABLE IN WOMEN'S [37398, 37399, 37403, 37404]. SEE PG. 84.

LAST DPDX

37395, 37396, 37397 D: 7-13 [1½ thru 12]

37400, 37402 D: 7-14 [1½ thru 12]

SKYRIDGE



DANNER® DRY OrthoLite®

- Durable suede and textile upper
- Danner® Dry waterproof protection
- Two lace options
- Cushioning open-cell OrthoLite® footbed
- EVA cushioning and shock absorbing midsole
- Danner® Mountain Tread outsole with multi-directional lugs

STYLE #	HEIGHT	COLOR / PATTERN	WATERPROOF	INSULATION	WEIGHT
30162	4.5"	Dark Earth	✓	-	35 oz
30165	4.5"	Cathay Spice	✓	-	35 oz
30166	4.5"	Black/Ponderosa	✓	-	35 oz
30168	4.5"	Legion Blue	✓	-	35 oz
30169	4.5"	Pinecone	✓	-	35 oz

SIZES

D: 7-13 [½ thru 12]

LAST DPDX

MOUNTAIN 600 CHELSEA



OrthoLite®  MEGAGRIP

- Premium suede upper
- Flexible and breathable Ariaprene™ collar material
- Cushioning open-cell OrthoLite® footbed
- Vibram® SPE midsole for maximum rebound, comfort and support
- Vibram® Fuga outsole with Megagrip technology offers superior grip on wet and dry surfaces

STYLE #	HEIGHT	COLOR / PATTERN	WATERPROOF	INSULATION	WEIGHT
36216	4.5"	Rock Ridge/Black Olive	-	-	29 oz
36236	4.5"	Java/Forest Green	-	-	29 oz

SIZES AVAILABLE IN WOMEN'S [36218, 36219, 36237, 36238]. SEE PG. 84.

LAST DPDX

D: 7-14 [½ thru 12]



MOUNTAIN 600 CHELSEA - FULL GRAIN



36221

36220

Ortholite®



MEGAGRIP

- Premium full-grain leather upper
- Flexible and breathable Ariaprene™ collar material
- Cushioning open-cell OrthoLite® footbed
- Vibram® SPE midsole for maximum rebound, comfort and support
- Vibram® Fuga outsole with Megagrip technology offers superior grip on wet and dry surfaces

STYLE #	HEIGHT	COLOR / PATTERN	WATERPROOF	INSULATION	WEIGHT
36220	4.5"	Black	-	-	29 oz
36221	4.5"	Saddle Tan	-	-	29 oz

SIZES

D: 7-13 [1½ thru 12]

LAST DPDX

PUB GARDEN



30360



30361

DANNER® DRY OrthoLite®

- Durable leather upper
- Danner® Dry waterproof protection
- Two lace options
- Cushioning open-cell OrthoLite® footbed
- Lightweight PU midsole
- Bi-Fit stability board for underfoot comfort, reduced weight and added forefoot flex
- Danner® Pub Garden oil-and-slip-resistant outsole

STYLE #	HEIGHT	COLOR / PATTERN	WATERPROOF	INSULATION	WEIGHT
30360	6"	Cathay Spice	✓	-	41 oz
30361	6"	Chocolate	✓	-	41 oz

SIZES AVAILABLE IN WOMEN'S [30362, 30363]. SEE PG. 85.

LAST DPDX2

D: 7-14 [1½ thru 12]

PUB GARDEN CHELSEA



30331



30330

DANNER® DRY OrthoLite®

- Durable leather upper
- Danner® Dry waterproof protection
- Cushioning open-cell OrthoLite® footbed
- Lightweight PU midsole
- Bi-Fit stability board for underfoot comfort, reduced weight and added forefoot flex
- Danner® Pub Garden oil-and-slip-resistant outsole

STYLE #	HEIGHT	COLOR / PATTERN	WATERPROOF	INSULATION	WEIGHT
30330	4.5"	Jet Black	✓	-	37 oz
30331	4.5"	Chocolate	✓	-	37 oz

SIZES AVAILABLE IN WOMEN'S [30332, 30333]. SEE PG. 85.

LAST DPDX2

D: 7-14 [1½ thru 12]

BULL RUN LUX



31662



NEW 31661



31660

OrthoLite® // STITCHDOWN



- Made in the USA with imported components
- Premium, durable nubuck upper
- Unlined
- Two lace options
- Cushioning open-cell OrthoLite® footbed
- Handcrafted, stitchdown construction for strength and stability
- Danner® Wedge non-marking, oil-and-slip-resistant outsole offers superior traction
- Recraftable

STYLE #	HEIGHT	COLOR / PATTERN	WATERPROOF	INSULATION	WEIGHT
31660	6"	Sunstone	-	-	43 oz
31661	6"	Burro Brown	-	-	43 oz
31662	6"	Vintage Sterling	-	-	43 oz

SIZES

D: 7-14 [1/2 thru 12]

LAST 503

NORTH FORK RAMBLER



32762



32761

OrthoLite® // STITCHDOWN



- Premium full-grain leather upper
- Padded, moisture-wicking liner
- Cushioning open-cell OrthoLite® footbed
- Handcrafted, stitchdown construction for strength and durability
- Durable and lightweight Vibram® Q330 outsole

STYLE #	HEIGHT	COLOR / PATTERN	WATERPROOF	INSULATION	WEIGHT
32761	6"	Bark	-	-	34 oz
32762	6"	Cathay Spice	-	-	34 oz

SIZES

32761 D: 7-13 [1/2 thru 12]

32762 D: 7-14 [1/2 thru 12]

LAST 503

NEW DANNER® JACK III



35700

35701

Ortholite®

- Premium full-grain leather upper
- Durable and moisture-wicking herringbone lining
- Cushioning open-cell Ortholite® footbed
- Leather and EVA midsole offers underfoot comfort
- Heritage hiker silhouette with classic 270 degree stitchdown construction
- Danner® Tualatin outsole provides traction in urban environments and beyond

STYLE #	HEIGHT	COLOR / PATTERN	WATERPROOF	INSULATION	WEIGHT
35700	6"	Mahogany	-	-	44 oz
35701	6"	Black	-	-	44 oz

SIZES AVAILABLE IN WOMEN'S [35702, 35703]. SEE PG. 86.

LAST 971X

D: 7-14 [1½ thru 12]

NEW DANNER® JACK III CHELSEA



37351

35750

Ortholite®

- Premium full-grain leather upper
- Durable and moisture-wicking herringbone lining
- Cushioning open-cell Ortholite® footbed
- Leather and EVA midsole offers underfoot comfort
- Heritage hiker silhouette with classic 270 degree stitchdown construction
- Danner® Tualatin outsole provides traction in urban environments and beyond

STYLE #	HEIGHT	COLOR / PATTERN	WATERPROOF	INSULATION	WEIGHT
35750	6"	Mahogany	-	-	41 oz
35751	6"	Black	-	-	41 oz

SIZES AVAILABLE IN WOMEN'S [35752, 35753]. SEE PG. 86.

LAST 971X

D: 7-14 [1½ thru 12]

WORK



STEEL YARD

Versatility for Every Jobsite

The Steel Yard is the new standard for affordable, comfortable, high-quality work boots, and it's now available in a wedge outsole for oil resistance and slip protection. With a variety of options available for every type of jobsite, the Steel Yard not only gets the job done, but does so with protection you can trust. A full-grain leather upper and multiple outsole options that feature the Danner® Comfort System ensure superior comfort, support and durability. Available in MET guard and steel toe options for protection and confidence every day on the job.



Danner® Steel Yard Wedge TPU outsole
for lasting comfort and durability

Optional Danner® Dry
waterproof protection

Danner® Comfort System
for best-in-class support
and cushioning

STEEL YARD



NEW 12537, 12538



12530, 12531, 12533 **NEW** 12536



12532



12534, 12535

DANNER® DRY *Thinsulate Ultra* INSULATION // DCS

- Durable, full-grain leather upper
- Breathable mesh lining [12530, 12532, 12537]
- Danner® Dry waterproof protection [12531, 12533, 12534, 12535, 12536, 12538]
- Thinsulate™ Ultra insulation [12533, 12535]
- Danner® Comfort System platform offers superior comfort, support, and durability
- PU midsole with shock absorption
- Steel shank
- Danner® Steel Yard outsole for stability and support [12530, 12531, 12532, 12533, 12534, 12535, 12536]
- Danner® Steel Yard Wedge oil-and-slip-resistant TPU outsole [12537, 12538]
- Steel toe meets or exceeds ASTM F2413-18 I/75 C/75 EH [12530, 12531, 12533, 12534, 12535, 12537, 12538]
- Steel toe and metatarsal meets or exceeds ASTM F2413-18 I/75 C/75 MT EH [12532]
- Electrical hazard protection ASTM F2892-18 EH [12536]

STYLE #	HEIGHT	COLOR / PATTERN	WATERPROOF	INSULATION	SAFETY	WEIGHT
12530	6"	Brown	-	-	ST	67 oz
12531	6"	Brown	✓	-	ST	70 oz
12532	6"	Brown	-	-	MET/ST	72 oz
12533	6"	Brown	✓	400G	ST	72 oz
12534	8"	Brown	✓	-	ST	75 oz
12535	8"	Brown	✓	400G	ST	78 oz
12536	6"	Brown	✓	-	-	64 oz
12537	6"	Brown	-	-	ST	69 oz
12538	6"	Brown	✓	-	ST	72 oz

SIZES

D: 7-16 [½ thru 12]; EE: 8-15 [½ thru 12]

LAST 610

NEW MODERN FIREFIGHTER



18051

DANNER® DRY Ortholite® Vibram® SP®

- Durable, fire-resistant, polishable full-grain leather upper
- Mountaineering-inspired, lightweight, athletic design
- Danner® Dry waterproof protection
- Cushioning open-cell Ortholite® footbed
- Vibram® S587 Fire & Ice oil-and-slip-resistant outsole offers heat resistance and traction over high-angle terrain
- Non-metallic toe meets or exceeds ASTM F2413-18 I/75 C/75 EH
- Modern Firefighter features a Danner® Dry waterproof liner, which has been tested for body fluid borne pathogen resistance and meets or exceeds ASTM F1671-13 standards
- NFPA 1977: 2016 edition certified
- Flexible puncture proof midsole board is CSA certified to -2195

STYLE #	HEIGHT	COLOR / PATTERN	WATERPROOF	INSULATION	SAFETY	WEIGHT
18051	8"	Black	✓	-	NMT	80 oz

SIZES **LAST** 851

B: 5-13; D: 6-15 [½ thru 12]; EE: 6-15 [½ thru 12]

NEW ROMEO



44030

//STITCHDOWN

- Durable full-grain leather upper
- Breathable mesh lining
- Cushioning PU footbed
- Nylon shank
- Handcrafted, stitchdown construction
- Danner® Romeo oil-and-slip-resistant PU outsole
- Electrical hazard protection ASTM F2892-18 EH

STYLE #	HEIGHT	COLOR / PATTERN	WATERPROOF	INSULATION	SAFETY	WEIGHT
44030	3"	Brown	-	-	-	40 oz

SIZES **LAST** C2-919

D: 7-15 [½ thru 12]; EE: 7-14 [½ thru 12]

RUN TIME



OrthoLite®

- Durable and lightweight, no-sew textile upper
- Breathable mesh lining
- Cushioning open-cell OrthoLite® footbed
- Danner® Plyolite™ EVA midsole offers lasting support and rebound
- Nylon shank
- Danner® Run Time oil-and-slip-resistant rubber outsole offers superior traction and durability
- Non-metallic toe meets or exceeds ASTM F2413-18 I/75 C/75 EH [12371,12375, 12376]
- Non-metallic toe meets or exceeds ASTM F2413-18 M I/75 C/75 SD [12372]
- Electrostatic Dissipative [ESD] construction reduces excess static electricity [12372]

STYLE #	HEIGHT	COLOR / PATTERN	WATERPROOF	INSULATION	SAFETY	WEIGHT
12371	3"	Brown	-	-	NMT	32 oz
12372	3"	Black	-	-	ESD/NMT	32 oz
12375	3"	Blue/Red	-	-	NMT	32 oz
12376	3"	Dark Shadow	-	-	NMT	32 oz

SIZES AVAILABLE IN WOMEN'S [12373, 12374, 12377]. SEE PG. 87.

LAST DPDX2

D: 8-14 [½ thru 12]; EE: 9-13 [½ thru 12]

BLACK BELT



OrthoLite®



- **Made in the USA with imported components**
- Lightweight, durable leather and textile upper
- Breathable mesh lining
- Cushioning open-cell OrthoLite® footbed
- EVA cushioning and shock absorbing midsole
- Nylon shank
- Danner® Black Belt oil-and-slip-resistant rubber outsole offers superior traction and durability
- Non-metallic toe meets or exceeds ASTM F2413-11 I/75 C/75 EH [18210]
- Non-metallic toe meets or exceeds ASTM F2413-11 M I/75 C/75 SD [18211]
- Electrostatic Dissipative [ESD] construction reduces excess static electricity [18211]

STYLE #	HEIGHT	COLOR / PATTERN	WATERPROOF	INSULATION	SAFETY	WEIGHT
18210	3"	Brown	-	-	NMT	32 oz
18211	3"	Black	-	-	NMT/ESD	32 oz

SIZES

LAST DPDX2

D: 8-14 [½ thru 12]; EE: 9-13 [½ thru 12]

SPRINGFIELD LOW



12211

12210

OrthoLite®

- Nubuck and mesh upper
- Mesh lining for breathable comfort in indoor work environments
- 100% metal free hardware
- Cushioning open-cell OrthoLite® footbed
- Danner® Plyolite™ EVA midsole offers lasting support and rebound
- Nylon shank
- Danner® Springfield ESD outsole with Flex-X technology provides stability and traction with minimal weight [12210]
- Danner® Springfield indoor-specific outsole with Flex-X technology provides stability and traction with minimal weight [12211]
- Non-metallic toe meets or exceeds ASTM F2413-11 I/75 C/75 EH [12211]
- Non-metallic toe meets or exceeds ASTM F2413-11 M I/75 C/75 SD [12210]
- Electrostatic Dissipative (ESD) construction reduces excess static electricity [12210]

STYLE #	HEIGHT	COLOR / PATTERN	WATERPROOF	INSULATION	SAFETY	WEIGHT
12210	3"	Brown/Blue	-	-	NMT/ESD	38 oz
12211	3"	Gray/Red	-	-	NMT	38 oz

SIZES AVAILABLE IN WOMEN'S [12212, 12213]. SEE PG. 87.

LAST 850

D: 7-16 [½ thru 12]; EE: 8-15 [½ thru 15]

SPRINGFIELD



12241

12252

12240, 12242

DANNER® DRY OrthoLite®

- Durable, waterproof, oiled nubuck and mesh upper
- Danner® Dry waterproof protection [12240, 12242, 12252]
- Cushioning open-cell OrthoLite® footbed
- Danner® Plyolite™ EVA midsole offers lasting support and rebound
- Nylon shank
- Danner® Springfield outsole with Flex-X technology provides stability and traction with minimal weight
- Non-metallic toe meets or exceeds ASTM F2413-11 I/75 C/75 EH [12241, 12242, 12252]
- Electrical hazard protection ASTM F2892-11 EH [12240]

STYLE #	HEIGHT	COLOR / PATTERN	WATERPROOF	INSULATION	SAFETY	WEIGHT
12240	4.5"	Brown/Orange	✓	-	-	40 oz
12241	4.5"	Black/Tan	-	-	NMT	45 oz
12242	4.5"	Brown/Orange	✓	-	NMT	45 oz
12252	4.5"	Gray/White	✓	-	NMT	45 oz

SIZES AVAILABLE IN WOMEN'S [12243, 12248, 12250]. SEE PG. 88.

LAST 850

D: 7-16 [½ thru 12]; EE: 8-15 [½ thru 15]

BULL RUN MOC TOE



OrthoLite® // *STITCHDOWN*



- Made in the USA with imported components
- Durable, oiled, full-grain leather upper [15563, 15564, 15568, 15569, 15573]
- Durable nubuck leather upper [15577]
- Moc toe design with contrasting stitch
- Cushioning open-cell OrthoLite® footbed
- Steel shank
- Handcrafted, stitchdown construction for strength and stability
- Danner® Wedge non-marking, oil-and-slip-resistant outsole offers superior traction
- Steel toe meets or exceeds ASTM F2413-11 I/75 C/75 EH [15564, 15569]
- Electrical hazard protection ASTM F2892-11 EH [15563, 15568, 15573, 15577]
- Recraftable

STYLE #	HEIGHT	COLOR / PATTERN	WATERPROOF	INSULATION	SAFETY	WEIGHT
15563	6"	Brown	-	-	-	51 oz
15564	6"	Brown	-	-	ST	56 oz
15568	6"	Black	-	-	-	51 oz
15569	6"	Black	-	-	ST	56 oz
15573	6"	Tobacco	-	-	-	51 oz
15577	6"	Wheat	-	-	-	51 oz

SIZES AVAILABLE IN WOMEN'S [15575, 15576]. SEE PG. 90. **LAST** 503 [15563, 15568, 15573, 15577]; 516 [15564, 15569]

D: 7-15 [½ thru 12]; EE: 7-14 [½ thru 12]

BULL RUN



OrthoLite® // *STITCHDOWN*



- Made in the USA with imported components
- Durable, oiled, full-grain leather upper
- Cushioning open-cell OrthoLite® footbed
- Steel shank
- Handcrafted, stitchdown construction for strength and stability
- Danner® Wedge non-marking, oil-and-slip-resistant outsole offers superior traction
- Electrical hazard protection ASTM F2892-11 EH
- Recraftable

STYLE #	HEIGHT	COLOR / PATTERN	WATERPROOF	INSULATION	SAFETY	WEIGHT
15552	6"	Brown	-	-	-	67 oz
15556	8"	Brown	-	-	-	74 oz

SIZES

LAST 503

D: 7-15 [½ thru 12]; EE: 7-14 [½ thru 12]

STRONGHOLD



16718, 16719

16711, 16713

DANNER® DRY Ortholite® 

- Durable, waterproof full-grain leather upper
- Danner® Dry waterproof protection
- Cushioning open-cell OrthoLite® footbed
- Vibram® SPE midsole for maximum rebound, comfort and support
- Nylon shank
- Custom Vibram® Stronghold outsole is oil-and-slip-resistant and offers traction on wet and dry surfaces with a 90° heel
- Non-metallic toe meets or exceeds ASTM F2413-11 I/75 C/75 EH [16713, 16719]
- Electrical hazard protection ASTM F2892-11 EH [16711, 16718]

STYLE #	HEIGHT	COLOR / PATTERN	WATERPROOF	INSULATION	SAFETY	WEIGHT
16711	6"	Brown	✓	-	-	43 oz
16713	6"	Brown	✓	-	NMT	51 oz
16718	6"	Black	✓	-	-	43 oz
16719	6"	Black	✓	-	NMT	51 oz

SIZES AVAILABLE IN WOMEN'S [16715, 16717, 16720, 16721]. SEE PG. 89.

LAST DPDX2

16711, 16713 D: 7-16 [½ thru 12]; EE: 8-15 [½ thru 12]

16718, 16719 D: 8-14 [½ thru 12]; EE: 9-13 [½ thru 12]

TRAKWELT



13245, 13247

13241, 13243

DANNER® DRY // GOODYEAR WELT

- Waterproof nubuck upper
- Danner® Dry waterproof protection
- Toe Shield protects leather for added durability
- Cushioning PU footbed
- PU midsole with shock absorbing zones under heel and forefoot for targeted cushioning
- Nylon shank
- Stable, long-lasting Goodyear welt construction
- Danner® Trakwelt oil-and-slip-resistant outsole offers rugged outdoor traction with a 90° heel
- Non-metallic toe meets or exceeds ASTM F2413-11 I/75 C/75 EH [13243, 13247]
- Electrical hazard protection ASTM F2892-11 EH [13241, 13245]

STYLE #	HEIGHT	COLOR / PATTERN	WATERPROOF	INSULATION	SAFETY	WEIGHT
13241	8"	Brown	✓	-	-	74 oz
13243	8"	Brown	✓	-	NMT	80 oz
13245	6"	Brown	✓	-	-	69 oz
13247	6"	Brown	✓	-	NMT	75 oz

SIZES

LAST 610

D: 8-14 [½ thru 12]; EE: 9-13 [½ thru 12]

CRAFTER



12437, 12439



12447



12433, 12435

DANNER® DRY *Thinsulate Ultra* INSULATION // DCS

- Durable, waterproof, oiled nubuck leather upper
- Anatomical design and broader toe box for a more responsive fit
- Danner® Dry waterproof protection
- Thinsulate™ Ultra Insulation [12447]
- Patented dual-density footbed for cushioning and underfoot air circulation, with an Airthotic® heel clip for support
- Nylon shank
- Danner® Comfort System platform offers superior comfort, support and durability
- Danner® Crafter oil-and-slip-resistant outsole offers superior traction with a low-profile 90° heel [12433, 12435, 12437, 12439]
- FrostTrekker outsole maintains traction in cold weather [12447]
- Non-metallic toe meets or exceeds ASTM F2413-11 I/75 C/75 EH [12435, 12439, 12447]
- Electrical hazard protection ASTM F2892-11 EH [12433, 12437]

STYLE #	HEIGHT	COLOR / PATTERN	WATERPROOF	INSULATION	SAFETY	WEIGHT
12433	6"	Brown	✓	-	-	53 oz
12435	6"	Brown	✓	-	NMT	56 oz
12437	8"	Brown	✓	-	-	58 oz
12439	8"	Brown	✓	-	NMT	59 oz
12447	8"	Brown	✓	600G	NMT	78 oz

SIZES

LAST DCP1-H

12433, 12435 D: 7-16 [1/2 thru 12]; EE: 8-15 [1/2 thru 12]

12437, 12439, 12447 D: 8-14 [1/2 thru 12]; EE: 9-13 [1/2 thru 12]

CRAFTER ROMEO



12441

// DCS

- Durable, waterproof, oiled nubuck leather upper
- Anatomical design and broader toe box for a more responsive fit
- Breathable, moisture-wicking mesh lining
- Patented dual-density footbed for cushioning and underfoot air circulation, with an Airthotic® heel clip for support
- Nylon shank
- Danner® Comfort System platform offers superior comfort, support and durability
- Danner® Crafter oil-and-slip-resistant outsole offers superior traction with a low-profile 90° heel
- Electrical hazard protection ASTM F2892-11 EH

STYLE #	HEIGHT	COLOR / PATTERN	WATERPROOF	INSULATION	SAFETY	WEIGHT
12441	3"	Brown	-	-	-	42 oz

SIZES

LAST DCP3-H

D: 8-14 [1/2 thru 12]; EE: 9-13 [1/2 thru 12]

CRAFTER WELLINGTON



12453, 12455

DANNER® DRY // DCS

- Durable, waterproof, oiled nubuck leather upper
- Danner® Dry waterproof protection
- Anatomical design and broader toe box for a more responsive fit
- Patented dual-density footbed for cushioning and underfoot air circulation, with an Airthotic® heel clip for support
- Nylon shank
- Danner® Comfort System platform offers superior comfort, support and durability
- Danner® Crafter oil-and-slip-resistant outsole offers superior traction with a low-profile 90° heel
- Non-metallic toe meets or exceeds ASTM F2413-11 I/75 C/75 EH [12455]
- Electrical hazard protection ASTM F2892-11 EH [12453]

STYLE #	HEIGHT	COLOR / PATTERN	WATERPROOF	INSULATION	SAFETY	WEIGHT
12453	11"	Brown	✓	-	-	58 oz
12455	11"	Brown	✓	-	NMT	64 oz

SIZES

LAST DCP1-H Wellington

D: 8-14 [1/2 thru 12]; EE: 9-13 [1/2 thru 12]

STEEL YARD WELLINGTON



NEW 12562

12560, 12561

DANNER® DRY // DCS

- Durable, full-grain leather upper
- Breathable mesh lining [12562]
- Danner® Dry waterproof protection [12560, 12561]
- Danner® Comfort System platform offers superior comfort, support, and durability
- PU midsole with shock absorption
- Steel shank
- Danner® Steel Yard outsole for stability and support [12560, 12561]
- Danner® Steel Yard Wedge oil-and-slip-resistant TPU outsole [12562]
- Steel toe meets or exceeds ASTM F2413-18 I/75 C/75 EH [12561, 12562]
- Electrical hazard protection ASTM F2892-18 EH [12560]

STYLE #	HEIGHT	COLOR / PATTERN	WATERPROOF	INSULATION	SAFETY	WEIGHT
12560	11"	Brown	✓	-	-	67 oz
12561	11"	Brown	✓	-	ST	75 oz
12562	11"	Brown	-	-	ST	75 oz

SIZES

LAST 610

12560 D: 7-16 [1/2 thru 12]; EE: 8-15 [1/2 thru 12]

12561, 12562 D: 7-16 [1/2 thru 12]; EE: 8-15 [1/2 thru 12]

BULL RUN WELLINGTON



15580, 15581

15582, 15583

OrthoLite® // *STITCHDOWN*



- **Made in the USA with imported components**
- Round toe [15580, 15581] or square toe [15582, 15583]
- Durable, oiled, full-grain leather upper
- Cushioning open-cell OrthoLite® footbed
- Steel shank
- Handcrafted, stitchdown construction for strength and stability
- Danner® Bull Run Wellington oil-and-slip-resistant PU outsole features a 90° heel
- Steel toe meets or exceeds ASTM F2413-11 I/75 C/75 EH [15581, 15583]
- Electrical hazard protection ASTM F2892-11 EH [15580, 15582]
- Recraftable

STYLE #	HEIGHT	COLOR / PATTERN	WATERPROOF	INSULATION	SAFETY	WEIGHT
15580	11"	Brown	-	-	-	56 oz
15581	11"	Brown	-	-	ST	64 oz
15582	11"	Brown	-	-	-	58 oz
15583	11"	Brown	-	-	ST	69 oz

SIZES

LAST 397 [15580, 15581], 398 [15582, 15583]

D: 8-14 [½ thru 12]; EE: 9-13 [½ thru 12]

STRONGHOLD WELLINGTON



16741, 16742, 16743, 16744

DANNER® DRY OrthoLite®



- Durable, oiled, full-grain leather upper
- Danner® Dry waterproof protection [16743, 16744]
- Breathable mesh lining [16741, 16742]
- Cushioning open-cell OrthoLite® footbed
- Vibram® SPE midsole for maximum rebound, comfort and support
- Nylon shank
- Custom Vibram® Stronghold outsole is oil-and-slip-resistant and offers traction on wet and dry surfaces with a low-profile 90° heel
- Non-metallic toe or exceeds ASTM F2413-11 I/75 C/75 EH [16742, 16744]
- Electrical hazard protection ASTM F2892-11 EH [16741, 16743]

STYLE #	HEIGHT	COLOR / PATTERN	WATERPROOF	INSULATION	SAFETY	WEIGHT
16741	10"	Brown	-	-	-	48 oz
16742	10"	Brown	-	-	NMT	53 oz
16743	10"	Brown	✓	-	-	48 oz
16744	10"	Brown	✓	-	NMT	53 oz

SIZES

LAST DPDX2

D: 8-14 [½ thru 12]; EE: 9-13 [½ thru 12]

TRAKWELT WELLINGTON



13248, 13249

DANNER® DRY // GOODYEAR WELT

- Waterproof nubuck upper
- Danner® Dry waterproof protection
- Toe Shield protects leather for added durability
- Cushioning PU footbed
- PU midsole with shock absorbing zones under heel and forefoot for targeted cushioning
- Nylon shank
- Stable, long-lasting Goodyear welt construction
- Danner® Trakwelt Wellington oil-and-slip-resistant outsole offers rugged outdoor traction as well as a 90° heel
- Non-metallic toe meets or exceeds ASTM F2413-11 I/75 C/75 EH [13249]
- Electrical hazard protection ASTM F2892-11 EH [13248]

STYLE #	HEIGHT	COLOR / PATTERN	WATERPROOF	INSULATION	SAFETY	WEIGHT
13248	11"	Brown	✓	-	-	74 oz
13249	11"	Brown	✓	-	NMT	80 oz

SIZES

LAST 610

D: 8-14 [½ thru 12]; EE: 9-13 [½ thru 12]

WORKMAN



16281, 16283



16285, 16287

GORE-TEX® OrthoLite® // STITCHDOWN 

- Durable, waterproof, oiled full-grain leather upper
- GORE-TEX waterproof breathable lining
- Cushioning open-cell OrthoLite® footbed
- Vibram® SPE midsole for maximum rebound, comfort and support
- Bi-Fit stability board for underfoot comfort, reduced weight and added forefoot flex
- Handcrafted, stitchdown construction for strength and stability
- Vibram® Workman low-lugged, oil-and-slip-resistant outsole offers all-day comfort and durability
- Alloy toe meets or exceeds ASTM F2413-11 I/75 C/75 EH [16283, 16287]
- Electrical hazard protection ASTM F2892-11 EH [16281, 16285]

STYLE #	HEIGHT	COLOR / PATTERN	WATERPROOF	INSULATION	SAFETY	WEIGHT
16281	6"	Brown	✓	-	-	51 oz
16283	6"	Brown	✓	-	AT	61 oz
16285	8"	Brown	✓	-	-	58 oz
16287	8"	Brown	✓	-	AT	62 oz

SIZES

LAST 610

D: 8-14 [½ thru 12]; EE: 9-13 [½ thru 12]

VICIOUS



13858, 13860, 13855



13866, 13868, 13874



13862, 13864



13876, 13878

GORE-TEX *Thinsulate Ultra* // TRAILGUARD 

- Durable waterproof leather upper with abrasion-resistant heel cap
- GORE-TEX waterproof breathable lining [all styles except 13878]
- Breathable, moisture wicking lining [13878]
- Thinsulate™ Ultra Insulation [13874]
- Cushioning PU footbed
- Dual-density EVA cushioning and shock absorbing midsole offers added durability on the outside edges with cushioning on the inside for more comfort and support underfoot
- Nylon shank
- TRAILGUARD platform offers lightweight, athletic performance
- Vibram® Vicious oil-and-slip-resistant outsole offers superior indoor and outdoor traction with a low-profile 90° heel
- Non-metallic toe and metatarsal meets or exceeds ASTM F2413-11 I/75 C/75 MT EH [13855]
- Non-metallic toe meets or exceeds ASTM F2413-11 I/75 C/75 EH [13860, 13864, 13868, 13874, 13876, 13878]
- Electrical hazard protection ASTM F2892-11 EH [13858, 13862, 13866]

STYLE #	HEIGHT	COLOR / PATTERN	WATERPROOF	INSULATION	SAFETY	WEIGHT
13855	4.5"	Brown/Orange	✓	-	MET/NMT	53 oz
13858	4.5"	Brown/Orange	✓	-	-	46 oz
13860	4.5"	Brown/Orange	✓	-	NMT	53 oz
13862	4.5"	Black/Blue	✓	-	-	47 oz
13864	4.5"	Black/Blue	✓	-	NMT	53 oz
13866	8"	Brown	✓	-	-	53 oz
13868	8"	Brown	✓	-	NMT	59 oz
13874	8"	Brown	✓	400G	NMT	66 oz
13876	4.5"	Slate/Black	✓	-	NMT	53 oz
13878	4.5"	Slate/Black	-	-	NMT	48 oz

SIZES AVAILABLE IN WOMEN'S [13853]. SEE PG. 88.

LAST DLE-01

13855, 13858, 13860 D: 7-16 [½ thru 12]; EE: 8-15 [½ thru 12]

13862, 13864, 13866, 13868, 13874 D: 7-14 [½ thru 12]; EE: 8-13 [½ thru 12]

13876, 13878 D: 7-16 [½ thru 12]; EE: 7-15 [½ thru 12]

CORVALLIS



17601, 17602

GORE-TEX[®] // TFX

- Durable, waterproof full-grain leather upper with abrasion-resistant toe and heel cap
- Triple-stitched for ultimate durability and protection
- GORE-TEX waterproof, breathable lining
- Cushioning Danner[®] Fatigue Fighter footbed
- Nylon shank
- TERRA FORCE[®] X platform offers lightweight performance and stability
- Danner[®] Landscaper oil-and-slip-resistant outsole offers superior traction with a low-profile 90° heel
- Non-metallic toe meets or exceeds ASTM F2413-11 I/75 C/75 EH [17602]
- Electrical hazard protection ASTM F2892-11 EH [17601]

STYLE #	HEIGHT	COLOR / PATTERN	WATERPROOF	INSULATION	SAFETY	WEIGHT
17601	5"	Brown	✓	-	-	53 oz
17602	5"	Brown	✓	-	NMT	58 oz

SIZES

LAST 851

D: 8-14 [½ thru 12]; EE: 9-13 [½ thru 12]

IRONSOF



14731, 14733

DANNER[®] DRY

- Durable waterproof leather upper
- Danner[®] Dry waterproof protection
- Cushioning PU footbed
- Dual-density PU midsole with shock absorbing zones under heel and forefoot for targeted cushioning
- Fiberglass shank
- Danner[®] Ironsoft TPU oil-and-slip-resistant outsole offers superior traction
- Non-metallic toe meets or exceeds ASTM F2413-11 I/75 C/75 EH [14733]
- Electrical hazard protection ASTM F2892-11 EH [14731]

STYLE #	HEIGHT	COLOR / PATTERN	WATERPROOF	INSULATION	SAFETY	WEIGHT
14731	6"	Brown	✓	-	-	54 oz
14733	6"	Brown	✓	-	NMT	62 oz

SIZES

LAST 851

D: 8-14 [½ thru 12]; EE: 9-13 [½ thru 12]



17309, 17310, 17311



17327, 13729



17305, 17307



17315, 17317, 17319, 17321



▪ **Made in the USA with imported components**

- Durable, waterproof, oiled nubuck leather upper [17315, 17317, 17319, 17321]
- Durable, waterproof, full-grain leather upper [17305, 17307, 17309, 17310, 17311, 17327, 17329]
- Triple-stitched for ultimate durability and protection
- GORE-TEX waterproof breathable lining
- Thinsulate™ Ultra Insulation [17319, 17321]
- Rugged hardware for secure fit and long-lasting performance
- Cushioning open-cell OrthoLite® footbed
- Fiberglass shank
- Handcrafted, stitchdown construction for strength and stability
- Vibram® Quarry oil-and-slip-resistant outsole offers superior traction and debris release [17305, 17307, 17309, 17310, 17311, 17315, 17317]
- Vibram® Quarry Fire & Ice oil-and-slip-resistant outsole offers superior traction in extreme hot and cold environments [17319, 17321]
- Danner® Wedge Outsole is non-marking, oil-and-slip resistant and offers cushioning and traction indoors [17327, 13729]
- Alloy toe and metatarsal meets or exceeds ASTM F2413-11 I/75 C/75 MT EH [17310]
- Both alloy and non-metallic toe meet or exceed ASTM F2413-11 I/75 C/75 EH [17307, 17311, 17317, 17321, 17329]
- Electrical hazard protection ASTM F2892-11 EH [17305, 17309, 17315, 17319, 17327]
- Recraftable

STYLE #	HEIGHT	COLOR / PATTERN	WATERPROOF	INSULATION	SAFETY	WEIGHT
17305	8"	Brown	✓	-	-	70 oz
17307	8"	Brown	✓	-	AT	77 oz
17309	8"	Black	✓	-	-	70 oz
17310	8"	Black	✓	-	MET/AT	80 oz
17311	8"	Black	✓	-	AT	77 oz
17315	8"	Distressed Brown	✓	-	-	70 oz
17317	8"	Distressed Brown	✓	-	AT	77 oz
17319	8"	Distressed Brown	✓	400G	-	83 oz
17321	8"	Distressed Brown	✓	400G	NMT	85 oz
17327	8"	Brown	✓	-	-	69 oz
17329	8"	Brown	✓	-	AT	74 oz

SIZES AVAILABLE IN WOMEN'S [17323, 17325]. SEE PG. 90.

LAST 610

17305, 17307, 17309, 17311, 17315, 17317 D: 7-16 [½ thru 12]; EE: 7-15 [½ thru 12]

17310 D: 7-16 [½ thru 12]; EE: 8-15 [½ thru 12]

17319, 17321, 17327, 17329 D: 7-15 [½ thru 12]; EE: 7-14 [½ thru 12]

POWER FOREMAN



15200, 15210

GORE-TEX WATER // STITCHDOWN 



- **Made in the USA**
- Durable, waterproof full-grain leather upper
- Triple-stitched for ultimate durability and protection
- Additional 7 oz leather layer in toe for abrasion resistance
- GORE-TEX waterproof breathable lining
- Cushioning, molded PU footbed
- Fiberglass shank
- Handcrafted, stitchdown construction for strength and stability
- Vibram® 4014 Christy outsole offers superior traction on steep terrain
- Non-metallic toe meets or exceeds ASTM F2413-11 I/75 C/75 EH [15210]
- Electrical hazard protection ASTM F2892-11 EH [15200]
- Recraftable

STYLE #	HEIGHT	COLOR / PATTERN	WATERPROOF	INSULATION	SAFETY	WEIGHT
15200	8"	Brown	✓	-	-	77 oz
15210	8"	Brown	✓	-	NMT	86 oz

SIZES

LAST 610 [15200]; 516 [15210]

D: 7-14 [½ thru 12]; EE: 7-13 [½ thru 12]


DANNER® LOGGER



15431



15435, 15437, 15439

DANNER® DRY *Thinsulate Ultra* INSULATION Ortholite® // STITCHDOWN 

- Durable, waterproof, oiled nubuck leather upper
- Danner® Dry waterproof protection
- Cushioning open-cell OrthoLite® footbed
- Thinsulate™ Ultra Insulation [15435, 15437]
- Bi-Fit stability board for underfoot comfort, reduced weight and added forefoot flex
- Handcrafted, stitchdown construction for strength and stability
- Vibram® 360° Logger outsole offers substantial edging and superior traction
- Non-metallic toe meets or exceeds ASTM F2413-11 I/75 C/75 EH [15437]
- Electrical hazard protection ASTM F2892-11 EH [15431, 15435, 15439]

STYLE #	HEIGHT	COLOR / PATTERN	WATERPROOF	INSULATION	SAFETY	WEIGHT
15431	8"	Black	✓	-	-	69 oz
15435	8"	Brown	✓	400G	-	76 oz
15437	8"	Brown	✓	400G	NMT	84 oz
15439	8"	Brown	✓	-	-	70 oz

SIZES AVAILABLE IN EXTENDED SIZES

LAST 607

D: 8-14 [½ thru 12]; EE: 9-13 [½ thru 12]

RAIN FOREST



10600

14100

GORE-TEX // **STITCHDOWN** 



- **Made in the USA**
- Durable, waterproof, full-grain leather upper
- Triple-stitched for ultimate durability and protection
- GORE-TEX waterproof breathable lining
- Danner® Airthotic® heel cradle and arch support
- Fiberglass shank
- Handcrafted, stitchdown construction for strength and stability
- Vibram® 132 Montagna angled outsole offers superior traction on steep terrain
- Electrical hazard protection ASTM F2892-11 EH
- Recraftable

STYLE #	HEIGHT	COLOR / PATTERN	WATERPROOF	INSULATION	SAFETY	WEIGHT
10600	8"	Brown	✓	-	-	74 oz
14100	8"	Black	✓	-	-	74 oz

SIZES AVAILABLE IN WOMEN'S [14100]. SEE PG. 91.

LAST 650

D: 7-14 [½ thru 12]; EE: 7-13 [½ thru 12]

SUPER RAIN FOREST



11500, 11550, 11700

GORE-TEX *Thinsulate Ultra* // **STITCHDOWN** 



- **Made in the USA**
- Durable, waterproof, full-grain leather upper offers alkali, lime and barnyard chemical-resistance
- Triple-stitched for ultimate durability and protection
- Additional 7 oz leather layer in toe for abrasion resistance
- GORE-TEX waterproof breathable lining
- Thinsulate™ Ultra Insulation [11700]
- Cushioning, molded PU footbed
- Fiberglass shank
- Handcrafted, stitchdown construction for strength and stability
- Vibram® 132 Montagna angled outsole offers superior traction on steep terrain
- Non-metallic toe meets or exceeds ASTM F2413-11 I/75 C/75 EH [11550]
- Electrical hazard protection ASTM F2892-11 EH [11500, 11700]
- Recraftable

STYLE #	HEIGHT	COLOR / PATTERN	WATERPROOF	INSULATION	SAFETY	WEIGHT
11500	8"	Black	✓	-	-	80 oz
11550	8"	Black	✓	-	NMT	86 oz
11700	8"	Black	✓	200G	-	86 oz

SIZES

LAST 610 [11500, 11700]; 516 [11550]

D: 7-14 [½ thru 12]; EE: 7-13 [½ thru 12]

FLASHPOINT II



18102

// **STITCHDOWN**



- **Made in the USA with domestic and imported components**
- Fire, puncture and water-resistant 8 oz full-grain leather upper
- Triple-stitched with Nomex® fire-resistant thread for ultimate durability and protection
- Additional 7 oz leather layer in toe for abrasion resistance
- Cushioning PU footbed
- Steel shank
- Handcrafted, stitchdown construction for strength and stability
- Vibram® 360° Logger Fire & Ice outsole offers heat resistance and superior edging and traction on rugged terrain
- Electrical hazard protection ASTM F2892-11 EH
- NFPA 1977: 2016 edition certified
- Recraftable

STYLE #	HEIGHT	COLOR / PATTERN	WATERPROOF	INSULATION	SAFETY	WEIGHT
18102	10"	Black	-	-	-	101 oz

SIZES AVAILABLE IN WOMEN'S [18102]. SEE PG. 91.

LAST 74

D: 6-15 [½ thru 12]; EE: 6-15 [½ thru 12]; EEEE: 6-12

WILDLAND TACTICAL FIREFIGHTER



18054

18050

Ortholite®



- **Made in the USA with domestic and imported components**
- Durable, fire-resistant full-grain leather upper [18054]
- Durable, fire-resistant rough-out leather upper [18050]
- Mountaineering-inspired, lightweight, athletic design
- Breathable, moisture-wicking mesh lining
- Cushioning open-cell OrthoLite® footbed
- Full-length polypropylene board with integrated steel shank for optimal rigidity and stability underfoot
- Handcrafted, opanka-stitch construction for strength and stability
- Vibram® S587 Fire & Ice oil-and-slip-resistant outsole offers heat resistance and traction over high-angle terrain
- Electrical hazard protection ASTM F2892-11 EH
- NFPA 1977: 2016 edition certified

STYLE #	HEIGHT	COLOR / PATTERN	WATERPROOF	INSULATION	SAFETY	WEIGHT
18050	8"	Black	-	-	-	80 oz
18054	8"	Black Smooth Out	-	-	-	80 oz

SIZES AVAILABLE IN EXTENDED SIZES

LAST 851

B: 5-13 [½ thru 12]; D: 6-15 [½ thru 12]; EE: 6-15 [½ thru 12]



TACTICAL

DOWNRANGE

Off Duty,
On Target

When we set out to design a multi-purpose, all-terrain boot that is burly enough for overseas combat but comfortable enough for a day at the range, we paired Danner's legendary durability with performance technologies such as GORE-TEX and Vibram® to get the job done. The new Downrange performs in all conditions without sacrificing comfort and breathability. With reinforced rubber on the toe cap and heel and a slip-resistant Vibram® outsole, the Downrange offers confidence in every step, wherever your mission takes you.



NEW DOWNRANGE



54020



- Durable, full-grain leather and nylon upper
- GORE-TEX waterproof breathable lining
- Stitched rubber toe cap and heel for durability and abrasion resistance
- Cushioning PU footbed
- PU midsole for shock-absorption and cushioning
- Nylon shank
- Large metatarsal lug provides balance and support on uneven terrain
- Vibram® Downrange slip-resistant outsole features pentagonal lugs for versatile grip in all conditions

STYLE #	HEIGHT	COLOR / PATTERN	WATERPROOF	INSULATION	SAFETY	WEIGHT
54020	6"	Tan/Black/Charcoal	✓	-	-	53 oz

SIZES **LAST** DLE

D: 6-16 [½ thru 12]; EE: 6-16 [½ thru 12]

NEW ONYX



20330

- Lightweight synthetic knit mesh upper
- Breathable mesh lining
- Lace garage
- Low-density PU footbed offers lightweight cushioning and lasting durability
- Lightweight, shock-absorbing EVA midsole
- Nylon shank
- Danner® Instinct slip-resistant rubber outsole with pentagonal lugs offers stability and superior traction

STYLE #	HEIGHT	COLOR / PATTERN	WATERPROOF	INSULATION	SAFETY	WEIGHT
20330	3"	Black	-	-	-	26 oz

SIZES **LAST** JV6-310

D: 6-16 [½ thru 12]; EE: 6-16 [½ thru 12]

STRIKER® BOLT SIDE-ZIP




NEW 26635

26635

26634

26634

GORE-TEX // TFN 

- Durable, polishable, PU coated leather and nylon upper
- GORE-TEX waterproof breathable lining
- Semi-locking YKK® side-zip
- Lace garage
- Cushioning PU footbed
- TERRA FORCE® NEXT™ platform combines an internal and external shank system to provide arch support and torsion control
- Vibram® SPE midsole for maximum rebound, comfort and support
- Bi-Fit stability board for underfoot comfort, reduced weight and added forefoot flex
- Vibram® Striker® Bolt outsole is slip-resistant and offers maximum surface contact while gripping on and off pavement

STYLE #	HEIGHT	COLOR / PATTERN	WATERPROOF	INSULATION	SAFETY	WEIGHT
26634	8"	Black	✓	-	-	61 oz
26635	6"	Black	✓	-	-	56 oz

SIZES

LAST 851

D: 6-16 [1/2 thru 12]; EE: 6-16 [1/2 thru 12]


STRIKER® BOLT



26633

26632

26630

GORE-TEX // TFN 

- Durable, polishable, PU coated leather and nylon upper
- GORE-TEX waterproof breathable lining
- Lace garage
- Cushioning PU footbed
- TERRA FORCE® NEXT™ platform combines an internal and external shank system to provide arch support and torsion control
- Vibram® SPE midsole for maximum rebound, comfort and support
- Bi-Fit stability board for underfoot comfort, reduced weight and added forefoot flex
- Vibram® Striker® Bolt outsole is slip resistant and offers maximum surface contact while gripping on and off pavement

STYLE #	HEIGHT	COLOR / PATTERN	WATERPROOF	INSULATION	SAFETY	WEIGHT
26630	4.5"	Black	✓	-	-	53 oz
26632	6"	Black	✓	-	-	56 oz
26633	8"	Black	✓	-	-	61 oz

SIZES AVAILABLE IN WOMEN'S [26631]. SEE PG. 93.

LAST 851

D: 6-16 [1/2 thru 12]; EE: 6-16 [1/2 thru 12]

FULLBORE



20513



20511



20512

DANNER® DRY



MEGAGRIP

- Water resistant suede and mesh upper [20512]
- Full-grain leather and water resistant mesh upper [20511, 20513]
- Breathable air mesh lining [20512]
- Danner® Dry waterproof protection [20511, 20513]
- Low-density PU footbed offers lightweight cushioning and lasting durability
- Vibram® SPE midsole for maximum rebound, comfort and support
- Nylon shank
- Vibram® Fuga outsole with Megagrip technology offers superior grip on wet and dry surfaces

STYLE #	HEIGHT	COLOR / PATTERN	WATERPROOF	INSULATION	SAFETY	WEIGHT
20511	4.5"	Black	✓	-	-	42 oz
20512	4.5"	Coyote	-	-	-	42 oz
20513	4.5"	Gunmetal Gray	✓	-	-	42 oz

SIZES

LAST DPDX

20511, 20512 D: 6-15 [½ thru 12]; EE: 6-15 [½ thru 12]

20513 D: 6-15 [½ thru 12]; EE: 9-14 [½ thru 12]

SCORCH SIDE-ZIP



25731



25730



25733



25732

DANNER® DRY

OrthoLite®

- Lightweight, strategically patterned upper for maximum air circulation [25730, 25732] (*mesh panels are transparent and may reveal sock color or pattern*)
- Danner® Dry waterproof protection [25731, 25733]
- Semi-locking YKK® Side-Zip
- Polishable toe
- Breathable mesh lining [25730, 25732]
- Speed lacing for quick adjustments
- Cushioning open-cell OrthoLite® footbed
- Danner® Plyolite™ EVA midsole offers lasting support and rebound
- Nylon shank
- Danner® Scorch outsole is slip resistant and designed with a stability control arch

STYLE #	HEIGHT	COLOR / PATTERN	WATERPROOF	INSULATION	SAFETY	WEIGHT
25730	6"	Black	-	-	-	37 oz
25731	6"	Black	✓	-	-	43 oz
25732	8"	Black	-	-	-	40 oz
25733	8"	Black	✓	-	-	45 oz

SIZES

LAST 1368

D: 6-16 [½ thru 12]; EE: 6-16 [½ thru 12]

LOOKOUT STATION OFFICE BOOT



23829

DANNER® DRY // DCS

- Polishable, full-grain leather and nylon upper
- Anatomical design and broader toe box for a more responsive fit
- Danner® Dry waterproof protection
- Patented dual-density footbed for cushioning and underfoot air circulation, with an Airthotic® heel clip for support
- Dual pull tabs for easy pull on
- Nylon shank
- Danner® Comfort System platform offers superior comfort, support and durability
- Danner® Lookout slip-resistant outsole with low pentagonal lug pattern offers superior traction and maneuverability
- Non-metallic toe meets or exceeds ASTM F2413-11 I/75 C/75 EH
- Lookout series features a Danner® Dry waterproof liner, which has been tested for body fluid borne pathogen resistance and meets or exceeds ASTM F1671-13 standards

STYLE #	HEIGHT	COLOR / PATTERN	WATERPROOF	INSULATION	SAFETY	WEIGHT
23829	5.5"	Black	✓	-	NMT	54 oz

SIZES

LAST DCP1-H

D: 8-15 [½ thru 12]; EE: 9-14 [½ thru 12]

LOOKOUT



23822

23820

23827

DANNER® DRY *Thinsulate™ Ultra* // DCS

- Durable, waterproof, polishable leather upper with ripstop ballistic nylon
- Anatomical design and broader toe box for a more responsive fit
- Danner® Dry waterproof protection
- Thinsulate™ Ultra Insulation [23827]
- Patented dual-density footbed for cushioning and underfoot air circulation, with an Airthotic® heel clip for support
- Nylon shank
- Danner® Comfort System platform offers superior comfort, support and durability
- Danner® Lookout slip-resistant outsole with low pentagonal lug pattern offers superior traction and maneuverability
- Lookout series features a Danner® Dry waterproof liner, which has been tested for body fluid borne pathogen resistance and meets or exceeds ASTM F1671-13 standards

STYLE #	HEIGHT	COLOR / PATTERN	WATERPROOF	INSULATION	SAFETY	WEIGHT
23820	5.5"	Black	✓	-	-	48 oz
23822	8"	Black	✓	-	-	56 oz
23827	8"	Black	✓	800G	-	66 oz

SIZES

LAST DCP1-H

D: 6-16 [½ thru 12]; EE: 6-16 [½ thru 12]

LOOKOUT SIDE-ZIP



DANNER® DRY // DCS

- Durable, waterproof, polishable leather upper with ripstop ballistic nylon
- Anatomical design and broader toe box for a more responsive fit
- Danner® Dry waterproof protection
- Patented dual-density footbed for cushioning and underfoot air circulation, with an Airthotic® heel clip for support
- Nylon shank
- Danner® Comfort System platform offers superior comfort, support and durability
- Danner® Lookout slip-resistant outsole with low pentagonal lug pattern offers superior traction and maneuverability
- Non-metallic toe meets or exceeds ASTM F2413-11 I/75 C/75 EH [23821]
- Lookout series features a waterproof liner, Danner® Dry, which has been tested for body fluid borne pathogen resistance, and meets or exceeds ASTM F1671-13 standards
- Semi-locking zipper

STYLE #	HEIGHT	COLOR / PATTERN	WATERPROOF	INSULATION	SAFETY	WEIGHT
23821	5.5"	Black	✓	-	NMT	53 oz
23824	8"	Black	✓	-	-	56 oz

SIZES

LAST DCP1-H

D: 6-16 [½ thru 12]; EE: 6-16 [½ thru 12]

LOOKOUT EMS/CSA SIDE-ZIP



DANNER® DRY // DCS 

- Durable, waterproof, polishable leather upper
- Anatomical design and broader toe box for a more responsive fit
- Danner® Dry waterproof protection
- Semi-locking side-zip
- Patented dual-density footbed for cushioning and underfoot air circulation, with an Airthotic® heel clip for support
- Nylon shank
- Danner® Comfort System platform offers superior comfort, support and durability
- Danner® Lookout slip-resistant outsole with low pentagonal lug pattern offers superior traction and maneuverability
- Non-metallic toe meets or exceeds ASTM F2413-11 I/75 C/75 EH
- Lookout series features a Danner® Dry waterproof liner, which has been tested for body fluid borne pathogen resistance and meets or exceeds ASTM F1671-13 standards
- Puncture resistant midsole CSA certified to -2195

STYLE #	HEIGHT	COLOR / PATTERN	WATERPROOF	INSULATION	SAFETY	WEIGHT
23826	8"	Black	✓	-	NMT	66 oz

SIZES

LAST DCP1-H

B: 3-16 [½ thru 12]; D: 3-16 [½ thru 12]; EE: 3-16 [½ thru 12]

STALWART



GORE-TEX // **STITCHDOWN** 

- Durable, polishable, full-grain leather upper with lightweight 1000 denier nylon [26221, 26223]
- GORE-TEX waterproof, breathable lining
- Speed lacing system for secure, enhanced fit
- 8" all-leather side-zip option [26225]
- Cushioning PU footbed
- PU midsole
- Bi-Fit stability board for underfoot comfort, reduced weight and added forefoot flex
- Handcrafted, stitchdown construction for strength and stability
- Vibram® Kletterlift Light oil-and-slip-resistant outsole with low lugs for urban environments and Vibram® TC4T compound for added durability

STYLE #	HEIGHT	COLOR / PATTERN	WATERPROOF	INSULATION	SAFETY	WEIGHT
26221	8"	Black	✓	-	-	53 oz
26223	6"	Black	✓	-	-	50 oz
26225	8"	Black	✓	-	-	56 oz

SIZES **LAST** 610

26221, 26225 D: 6-16 [½ thru 12]; EE: 6-16 [½ thru 12]

26223 D: 8-15 [½ thru 12]; EE: 9-14 [½ thru 12]

PATROL



GORE-TEX // **STITCHDOWN** 



- **Made in the USA**
- Durable, polishable full-grain leather upper with lightweight 1000 denier nylon
- GORE-TEX waterproof breathable lining
- Lace-to-toe design for secure fit
- Fiberglass shank
- Handcrafted, stitchdown construction for strength and stability
- Vibram® 1276 Sierra outsole for traction in diverse terrain
- Recraftable

STYLE #	HEIGHT	COLOR / PATTERN	WATERPROOF	INSULATION	SAFETY	WEIGHT
25200	6"	Black	✓	-	-	59 oz

SIZES AVAILABLE IN WOMEN'S [25200]. SEE PG. 93.

LAST 650

D: 7-15 [½ thru 12]; EE: 6-13 [½ thru 12]

TACHYON



50124

50120

50122

GORE-TEX

- Hot weather breathable air mesh lining and polishable toe [50124]
- GORE-TEX waterproof, breathable lining and polishable toe [50122]
- Non-waterproof and breathable with abrasion-resistant toe cap for weight reduction [50120]
- Speed lacing system for secure, enhanced fit
- Cushioning, open-cell PU footbed
- EVA cushioning and shock-absorbing midsole
- Nylon shank
- Danner® Tachyon slip-resistant rubber outsole with low pentagonal lug pattern offers superior ground contact

STYLE #	HEIGHT	COLOR / PATTERN	WATERPROOF	INSULATION	SAFETY	WEIGHT
50120	8"	Black	-	-	-	26 oz
50122	8"	Black	✓	-	-	26 oz
50124	8"	Black	-	-	-	26 oz

SIZES AVAILABLE IN EXTENDED SIZES

LAST DLE-01

50120, 50122 D: 3-16 [½ thru 12]; EE: 3-16 [½ thru 12]

50124 D: 8-15 [½ thru 12]; EE: 9-14 [½ thru 12]

KINETIC



28010

28015

GORE-TEX

- Durable, waterproof, polishable full-grain leather upper with ripstop ballistic nylon
- GORE-TEX waterproof breathable lining
- Speed lacing system with semi-locking side-zip for secure, enhanced fit
- Cushioning PU footbed
- PU midsole
- Nylon shank
- Danner® Kinetic slip-resistant rubber outsole offers superior surface contact and traction

STYLE #	HEIGHT	COLOR / PATTERN	WATERPROOF	INSULATION	SAFETY	WEIGHT
28010	8"	Black	✓	-	-	51 oz
28015	6"	Black	✓	-	-	50 oz

SIZES AVAILABLE IN WOMEN'S [28080]. SEE PG. 92.

LAST 1368

D: 6-16 [½ thru 12]; EE: 7-14 [½ thru 12]

KINETIC SIDE-ZIP



GORE-TEX
PROTECT

- Durable, waterproof, polishable full-grain leather upper with ripstop ballistic nylon
- GORE-TEX waterproof breathable lining
- Speed lacing system with semi-locking side-zip for secure, enhanced fit
- Cushioning PU footbed
- PU midsole
- Nylon shank
- Danner® Kinetic slip-resistant rubber outsole offers superior surface contact and traction

STYLE #	HEIGHT	COLOR / PATTERN	WATERPROOF	INSULATION	SAFETY	WEIGHT
28012	8"	Black	✓	-	-	53 oz
28017	6"	Black	✓	-	-	48 oz

SIZES

LAST 1368

D: 6-16 [½ thru 12]; EE: 6-16 [½ thru 12]

DFA



GORE-TEX
PROTECT

// VIA



- Durable, waterproof nubuck leather upper with lightweight 1000 denier nylon
- GORE-TEX waterproof breathable lining
- Variable lacing system with lace garage for customizable fit
- Cushioning PU footbed
- Puncture-resistant Pebax® midsole plate offers springboard toe return and impact absorption
- Bi-Fit stability board for underfoot comfort, reduced weight and added forefoot flex
- Danner® VIA technology features a Vibram® V-4 ultra-abrasion rubber compound in the medial side arch for fast roping control
- Danner® Vibram® DFA 360° low-lugged outsole offers grip in all directions

STYLE #	HEIGHT	COLOR / PATTERN	WATERPROOF	INSULATION	SAFETY	WEIGHT
15404	8"	Black	✓	-	-	61 oz

SIZES AVAILABLE IN EXTENDED SIZES

LAST 1368

D: 3-16 [½ thru 12]; EE: 7-14 [½ thru 12]

ACADIA®



21210, 22500, 22600, 69210

GORE-TEX Thinsulate Ultra Thinsulate // STITCHDOWN Vibram 

- Made in the USA
- Durable, waterproof, polishable full-grain leather upper with lightweight 1000 denier nylon
- GORE-TEX waterproof breathable lining
- Thinsulate™ Insulation [69210] and Thinsulate™ Ultra Insulation [22600]
- Lace-to-toe design for secure fit
- Fiberglass shank
- Handcrafted, stitchdown construction for strength and stability
- Vibram® 148 Kletterlift outsole offers superior traction, stability and shock absorption
- Non-metallic toe meets or exceeds ASTM F2413-11 I/75 C/75 EH [22500]
- Recraftable

STYLE #	HEIGHT	COLOR / PATTERN	WATERPROOF	INSULATION	SAFETY	WEIGHT
21210	8"	Black	✓	-	-	66 oz
22500	8"	Black	✓	-	NMT	70 oz
22600	8"	Black	✓	400G	-	69 oz
69210	8"	Black	✓	200G	-	66 oz

SIZES AVAILABLE IN WOMEN'S [21210, 22600, 69210]. SEE PG. 94. **LAST** 650 [21210, 22600, 69210]; 516 [22500]

21210 B: 8-14 [½ thru 12]; D: 7-16 [½ thru 12]; EE: 6-15 [½ thru 12]; EEEE: 8-14 [½ thru 12]

22500 D: 7-14 [½ thru 12]; EE: 6-13 [½ thru 12]

22600, 69210 B: 8-14 [½ thru 12]; D: 7-15 [½ thru 12]; EE: 6-13 [½ thru 12]

RECON



69410

GORE-TEX Thinsulate // STITCHDOWN Vibram 

- Made in the USA
- Durable, waterproof, polishable full-grain leather upper
- GORE-TEX waterproof breathable lining
- Thinsulate™ Insulation
- Lace-to-toe design for secure fit
- Fiberglass shank
- Handcrafted, stitchdown construction for strength and stability
- Vibram® 148 Kletterlift outsole offers superior traction, stability and shock absorption
- Recraftable

STYLE #	HEIGHT	COLOR / PATTERN	WATERPROOF	INSULATION	SAFETY	WEIGHT
69410	8"	Black	✓	200G	-	66 oz

SIZES AVAILABLE IN WOMEN'S [69410]. SEE PG. 94.

LAST 650

D: 7-15 [½ thru 12]; EE: 6-14 [½ thru 12]

FORT LEWIS



29110, 69110

GORE-TEX
WATER

Thinsulate
INSULATION

// **STITCHDOWN**



- **Made in the USA**
- Durable, waterproof, polishable full-grain leather upper
- GORE-TEX waterproof breathable lining
- Thinsulate™ Insulation [69110]
- Lace-to-toe design for secure fit
- Fiberglass shank
- Handcrafted, stitchdown construction for strength and stability
- Vibram® 148 Kletterlift outsole offers superior traction, stability and shock absorption
- Recraftable

STYLE #	HEIGHT	COLOR / PATTERN	WATERPROOF	INSULATION	SAFETY	WEIGHT
29110	10"	Black	✓	-	-	74 oz
69110	10"	Black	✓	200G	-	74 oz

SIZES AVAILABLE IN WOMEN'S [29110, 69110]. SEE PG. 95.

LAST 650

29110 D: 7-15 [½ thru 12]; EE: 6-13 [½ thru 12]

69110 B: 8-14 [½ thru 12]; D: 7-15 [½ thru 12]; EE: 6-13 [½ thru 12]

TANICUS



55316, 55317 **NEW** 55322

DANNER® DRY

- **Meets AR 670-1 (Army) requirements for optional wear [55316, 55317]**
- **Meets AFI 36-2903 (Air Force) requirements for optional wear [55316, 55317, 55322]**
- Durable, rough-out leather upper with lightweight 1000 denier nylon
- Breathable, moisture-wicking mesh lining for hot weather [55316, 55322]
- Danner® Dry waterproof protection [55317]
- Semi-locking side-zip [55322]
- Cushioning PU footbed
- Bi-Fit stability board for underfoot comfort, reduced weight and added forefoot flex
- Danner® Tanicus slip-resistant outsole with pentagonal lug pattern offers superior durability and stability
- Non-metallic toe meets or exceeds ASTM F2413-11 I/75 C/75 EH [55322]

STYLE #	HEIGHT	COLOR / PATTERN	WATERPROOF	INSULATION	SAFETY	WEIGHT
55316	8"	Coyote	-	-	-	38 oz
55317	8"	Coyote	✓	-	-	42 oz
55322	8"	Coyote	-	-	NMT	53 oz

SIZES AVAILABLE IN EXTENDED SIZES

LAST 851

55316 D: 6-16 [½ thru 12]; EE: 6-16 [½ thru 12]

55317, 55322 D: 3-16 [½ thru 12]; EE: 3-16 [½ thru 12]

RECKONING



53221, 53223, 53225 **NEW** 53227, 53229



53231, 53214



53231, 53214



- **Made in the USA [Berry Compliant]**
- **USMC Certified with Eagle, Globe and Anchor emblem [53231, 53214]**
- **Meets AR 670-1 (Army) and AFI 36-2903 (Air Force) requirements for optional wear [53221, 53223, 53225]**
- **Certified USAF Safe To Fly requirements for optional wear:**
 - Fire resistant treated rough out leather
 - Vibram® Fire and Ice outsole material compound to withstand extreme temperatures [53227, 53229]
- Breathable, moisture-wicking air mesh lining and ventilation technology for hot weather [53221, 53223, 53231]
- GORE-TEX waterproof breathable lining [53214, 53225, 53229]
- Thinsulate™ Ultra Insulation [53225]
- Durable, rough-out leather with lightweight 1000 denier nylon
- Double rivet speed lacer for secure heel lock with lace-to-toe upper design for adjustable fit
- Fiberglass shank
- Innovative Danner® Vibram® All-Terrain (DAT) platform: PU midsole for shock absorption and rubber outsole engineered for high mileage durability
- Omni-directional pentagonal outsole lug pattern gives superior traction from all different angles
- Double bevel tread to reduce debris from compacting
- Arch Tech grip design provides traction and grip used for roping and climbing
- Non-metallic toe meets or exceeds ASTM F2413-11 I/75 C/75 EH [53223]

STYLE #	HEIGHT	COLOR / PATTERN	WATERPROOF	INSULATION	SAFETY	WEIGHT
53214	8"	Coyote/EGA	✓	-	-	50 oz
53221	8"	Coyote	-	-	-	50 oz
53223	8"	Coyote	-	-	NMT	54 oz
53225	8"	Coyote	✓	400G	-	53 oz
53227	8"	Coyote	-	-	-	50 oz
53229	8"	Coyote	✓	-	-	50 oz
53231	8"	Coyote/EGA	-	-	-	50 oz

SIZES AVAILABLE IN EXTENDED SIZES

LAST 851

53214, 53221, 53227, 53229, 53231	D: 3-16 [1/2 thru 12]; EE: 3-16 [1/2 thru 12]
53223, 53225	D: 5-14 [1/2 thru 12]; EE: 5-14 [1/2 thru 12]

INCURSION



50531

// TFN 

- Meets AR 670-1 (Army) and AFI 36-2903 (Air Force) requirements for optional wear
- Suede and 1000 denier nylon upper
- Breathable air mesh lining
- Speed lacing for quick adjustments
- Lace garage
- Cushioning PU footbed
- TERRA FORCE® NEXT™ platform combines an internal and external shank system to provide arch support and torsion control
- Vibram® SPE midsole for maximum rebound, comfort and support
- Bi-Fit stability board for underfoot comfort, reduced weight and added forefoot flex
- Vibram® Striker® Bolt outsole is slip-resistant and offers maximum surface contact while gripping on and off pavement

STYLE #	HEIGHT	COLOR / PATTERN	WATERPROOF	INSULATION	SAFETY	WEIGHT
50531	8"	Coyote	-	-	-	54 oz

SIZES

LAST 851

D: 6-16 [½ thru 12]; EE: 6-16 [½ thru 12]

SCORCH MILITARY



53661

Ortholite®

- Meets AR 670-1 (Army) and AFI 36-2903 (Air Force) requirements for optional wear
- Cattlehide suede and 1000 denier nylon
- Breathable mesh lining
- Speed lacing for quick adjustments
- Cushioning open-cell OrthoLite® footbed
- Danner® Plyolite™ EVA midsole offers lasting support and rebound
- Nylon shank
- Danner® Scorch outsole is slip resistant and designed with a stability control arch

STYLE #	HEIGHT	COLOR / PATTERN	WATERPROOF	INSULATION	SAFETY	WEIGHT
53661	8"	Coyote	-	-	-	42 oz

SIZES

LAST 1368

D: 8-15 [½ thru 12]; EE: 9-14 [½ thru 12]

RIVOT TFX®



51510, 51512, 51514

GORE-TEX® Thinsulate™ Ultra // TFX Vibram®



- Made in the USA
- Meets AR 670-1 (Army) and AFI 36-2903 (Air Force) requirements for optional wear
- Durable, rough-out leather upper with lightweight 1000 denier nylon
- Breathable, moisture-wicking mesh lining for hot weather [51510, 51512]
- GORE-TEX waterproof breathable lining [51514]
- Thinsulate™ Ultra Insulation [51514]
- Speed lacing system for secure, enhanced fit
- Cushioning PU footbed
- Fiberglass shank
- TERRA FORCE® X platform offers lightweight performance and stability
- Danner® Vibram® Rivot TFX 360° lugged outsole offers superior grip and mobility for increased pivot movements
- Non-metallic toe meets or exceeds ASTM F2413-11 I/75 C/75 EH [51512]

STYLE #	HEIGHT	COLOR / PATTERN	WATERPROOF	INSULATION	SAFETY	WEIGHT
51510	8"	Coyote	-	-	-	54 oz
51512	8"	Coyote	-	-	NMT	56 oz
51514	8"	Coyote	✓	400G	-	56 oz

SIZES AVAILABLE IN WOMEN'S [51516]. SEE PG. 95.

LAST 851

51510, 51514 D: 6-16 [1/2 thru 12]; EE: 6-16 [1/2 thru 12]

51512 D: 6-14 [1/2 thru 12]; EE: 6-14 [1/2 thru 12]

DESERT TFX® G3



24321, 24323

GORE-TEX® // TFX-B Vibram®

- Meets AR 670-1 (Army) and AFI 36-2903 (Air Force) requirements for optional wear
- Durable, rough-out leather upper with lightweight 1000 denier nylon
- Breathable, moisture-wicking mesh lining for hot weather [24321]
- GORE-TEX waterproof breathable lining [24323]
- Variable lacing system with lace garage for customizable fit
- Nylon shank
- Danner® TFX-8 platform with cross-stitch design offers added durability and stability in the lateral toe and medial heel pivot zones
- Vibram® Striker® Torrent oil-and-slip-resistant 360° low pentagonal lugged outsole offers grip in all directions with a flex notch design in key pivot areas and a more rugged outer lug pattern which sheds water and provides maximum surface contact

STYLE #	HEIGHT	COLOR / PATTERN	WATERPROOF	INSULATION	SAFETY	WEIGHT
24321	8"	Coyote	-	-	-	50 oz
24323	8"	Coyote	✓	-	-	53 oz

SIZES

LAST 851

D: 6-16 [1/2 thru 12]; EE: 6-16 [1/2 thru 12]

TACHYON



50136

- Meets AR 670-1 (Army) and AFI 36-2903 (Air Force) requirements for optional wear
- Durable, rough-out leather upper with lightweight 500 denier nylon
- Speed lacing system for secure, enhanced fit
- Cushioning, open-cell PU footbed
- EVA cushioning and shock-absorbing midsole
- Nylon shank
- Danner® Tachyon slip-resistant rubber outsole with pentagonal lug pattern offers superior ground contact

STYLE #	HEIGHT	COLOR / PATTERN	WATERPROOF	INSULATION	SAFETY	WEIGHT
50136	8"	Coyote	-	-	-	26 oz

SIZES AVAILABLE IN EXTENDED SIZES

LAST DLE-01

D: 3-16 [½ thru 12]; EE: 3-16 [½ thru 12]

MARINE EXPEDITIONARY BOOT



53110, 53111, 53117

GORE-TEX // **STITCHDOWN**  



- Made in the USA
- USMC Certified with Eagle, Globe and Anchor emblem
- Durable, nubuck leather upper with lightweight 1000 denier nylon
- Breathable, moisture-wicking mesh lining for hot weather [53110, 53117]
- GORE-TEX waterproof, breathable lining [53111]
- Speed lacing system with lace-to-toe design for secure fit
- PU footbed
- Fiberglass shank
- Handcrafted, stitchdown construction for strength and stability
- Vibram® 360 outsole with Dri-Ice compound offers superior traction in rugged and cold-weather environments [53110, 53111]
- Marine Expeditionary Boot - Aviator features a Vibram® 1276 Sierra outsole for traction in diverse terrain [53117]
- Steel toe meets or exceeds ASTM F2413-11 I/75 C/75 EH [53117]
- Recraftable

STYLE #	HEIGHT	COLOR / PATTERN	WATERPROOF	INSULATION	SAFETY	WEIGHT
53110	8"	Mojave	-	-	-	70 oz
53111	8"	Mojave	✓	-	-	70 oz
53117	8"	Mojave/Aviator	-	-	ST	74 oz

SIZES AVAILABLE IN EXTENDED SIZES

LAST 610

R: 3-16; W: 3-16



HUNT

SAN ANGELO SNAKE BOOT

All-Purpose Snake Protection

Built in our Portland, Ore. factory, the San Angelo is our first USA-made style that provides 360-degree snake protection, and it's now available in both a round and square toe. Our iconic stitchdown construction provides strength and stability and allows for the boot to be recrafted as the years take their toll. A full-grain leather and textile upper featuring an adjustable fit at the gusset and top of foot mean durable comfort from the moment you step out your door. The San Angelo is sturdy but lightweight – perfect for getting work done outside or for hunts that can't be limited by snakes in your path.



SAN ANGELO SNAKE BOOT



NEW 42752

42751

// STITCHDOWN



- **Made in the USA with imported components**
- 360° snake-proof protection
- Full-grain leather and textile upper
- Leather lined
- Buckles at gusset and top of foot for customized fit
- Generous pull loop for easy on
- Steel shank
- Handcrafted, stitchdown construction for strength and stability
- Danner® San Angelo PU outsole with low lugs for increased surface contact, comfort and durability

STYLE #	HEIGHT	COLOR / PATTERN	WATERPROOF	INSULATION	WEIGHT
42751	17"	Brown	-	-	62 oz
42752	17"	Brown	-	-	64 oz

SIZES

LAST 397 [42751], 398 [42752]

D: 7-16 [½ thru 12]; EE: 8-14 [½ thru 12]

VITAL SNAKE BOOT



41531

41530

DANNER® DRY



- 360° snake-proof protection
- Abrasion-resistant leather and textile upper
- Danner® Dry waterproof protection [41531]
- Breathable mesh liner [41530]
- Molded, open-cell PU footbed
- Danner® Plyolite™ EVA midsole offers lasting support and rebound
- Nylon shank
- Danner® Vital outsole provides grip on moss, rock and slick surfaces

STYLE #	HEIGHT	COLOR / PATTERN	WATERPROOF	INSULATION	WEIGHT
41530	17"	Brown	-	-	66 oz
41531	17"	Mossy Oak® Break-Up Country™	✓	-	66 oz

SIZES

LAST DT-4

D: 7-16 [½ thru 12]; EE: 8-14 [½ thru 12]

TROPHY



40000

GORE-TEX *Thinsulate Ultra* // **STITCHDOWN**



- **Made in the USA**
- Waterproof, full-grain leather upper
- GORE-TEX waterproof breathable lining
- Thinsulate™ Ultra Insulation
- Multi-density foam patterning eliminates hotspots and pinch points
- Cushioning PU footbed
- PU midsole
- Fiberglass shank
- Handcrafted, stitchdown construction for strength and stability
- Patented Danner® Bob® self-cleaning outsole offers superior traction in snow and mud
- Recraftable

STYLE #	HEIGHT	COLOR / PATTERN	WATERPROOF	INSULATION	WEIGHT
40000	10"	Brown	✓	600G	77 oz

SIZES **LAST** 610

D: 7-14 [½ thru 12]; EE: 8-14 [½ thru 12]

HOOD WINTER LIGHT



58900

GORE-TEX *Thinsulate* // **STITCHDOWN**



- **Made in the USA**
- Waterproof, full-grain leather upper
- GORE-TEX waterproof breathable lining
- Thinsulate™ Insulation
- Rugged hardware for secure fit and long-lasting performance
- PU midsole
- Thermoplastic PU shank
- Fiberglass shank
- Danner® Airthotic® heel cradle and arch support
- Handcrafted, stitchdown construction for strength and stability
- Vibram® 148 Kletterlift outsole offers superior traction, stability and shock absorption on rugged terrain
- Recraftable

STYLE #	HEIGHT	COLOR / PATTERN	WATERPROOF	INSULATION	WEIGHT
58900	8"	Brown	✓	200G	70 oz

SIZES **LAST** 650

D: 7-15 [½ thru 12]; EE: 8-13 [½ thru 12]

PRONGHORN®



- Waterproof, full-grain leather and nylon upper
- GORE-TEX waterproof breathable lining
- PrimaLoft® insulation [41341, 41342, 41343]
- Rugged hardware for secure fit and long lasting performance
- Cushioning PU footbed
- TERRA FORCE® NEXT™ platform combines an internal and external shank system to provide arch support and torsion control
- Vibram® SPE midsole for maximum rebound, comfort and support
- Thermoplastic PU shank
- Bi-Fit stability board for underfoot comfort, reduced weight and added forefoot flex
- Vibram® Pronghorn® outsole offers superior traction on rugged terrain

STYLE #	HEIGHT	COLOR / PATTERN	WATERPROOF	INSULATION	WEIGHT
41340	8"	Brown	✓	-	53 oz
41341	8"	Realtree Edge™	✓	400G	56 oz
41342	8"	Mossy Oak® Break-Up Country®	✓	800G	59 oz
41343	8"	Realtree Edge™	✓	1200G	64 oz

SIZES

D: 7-16 [½ thru 12]; EE: 8-14 [½ thru 12]

LAST 851

ELEMENT



- Waterproof, full-grain leather upper with lightweight 900 denier nylon
- Danner® Dry waterproof breathable lining
- Thinsulate™ Ultra Insulation [47131, 47132]
- Rugged hardware for secure fit and long lasting performance
- Cushioning PU footbed
- Specially formulated rubberized EVA midsole
- Fiberglass shank
- Danner® Element® outsole offers superior traction on rugged terrain

STYLE #	HEIGHT	COLOR / PATTERN	WATERPROOF	INSULATION	WEIGHT
47130	8"	Brown	✓	-	43 oz
47131	8"	Realtree Edge™	✓	400G	46 oz
47132	8"	Mossy Oak® Break-Up Country®	✓	800G	48 oz

SIZES

D: 7-15 [½ thru 12]; EE: 8-14 [½ thru 12]

LAST DPDX



VITAL



41559, 41560



41550, 41556



41552, 41555

DANNER® DRY

Thinsulate™ Ultra
INSULATION



- Abrasion-resistant leather and textile upper
- Danner® Dry waterproof protection
- Thinsulate™ Ultra Insulation [41552, 41555, 41556, 41560]
- Lock and load lacing system: ghillies across the forefoot for secure fit and locking speed hooks for quick, quiet lacing
- Mesh liner layered over Danner® Dry on tongue to help regulate both moisture and temperature
- Multi-density foam patterning eliminates hotspots and pinch points
- Molded, open-cell PU footbed
- Danner® Plyolite™ EVA midsole offers lasting support and rebound
- Nylon shank
- TPU heel clip for enhanced support and stability
- Danner® Vital outsole provides grip on moss, rock and slick surfaces

STYLE #	HEIGHT	COLOR / PATTERN	WATERPROOF	INSULATION	WEIGHT
41550	8"	Brown	✓	-	46 oz
41552	8"	Mossy Oak® Break-Up Country™	✓	400G	50 oz
41555	8"	Mossy Oak® Break-Up Country™	✓	1200G	56 oz
41556	8"	Brown	✓	400G	50 oz
41559	8"	Realtree Edge™	✓	-	46 oz
41560	8"	Realtree Edge™	✓	800G	53 oz

SIZES

D: 7-16 [1½ thru 12]; EE: 8-14 [1½ thru 12]

LAST DT4

ALSEA



46725



46721, 46723, 46724



46720, 46722



- Full-grain leather and textile upper
- GORE-TEX waterproof breathable lining
- PrimaLoft® insulation [46722, 46723, 46724, 46725]
- Speed hook lacing system for adjustable and secure fit
- Cushioning open-cell OrthoLite® footbed
- Danner® Plyolite™ EVA midsole offers lasting support and rebound
- Fiberglass shank
- Danner® Alsea outsole offers grippy traction in uneven terrain

STYLE #	HEIGHT	COLOR / PATTERN	WATERPROOF	INSULATION	WEIGHT
46720	8"	Brown	✓	-	51 oz
46721	8"	Mossy Oak® Break-Up Country®	✓	-	51 oz
46722	8"	Brown	✓	400G	56 oz
46723	8"	Mossy Oak® Break-Up Country®	✓	600G	59 oz
46724	8"	Mossy Oak® Break-Up Country®	✓	1000G	61 oz
46725	8"	Realtree Edge™	✓	400G	56 oz

SIZES

LAST 851

46720, 46721, 46722, 46723, 46724 D: 8-14 [½ thru 12]; EE: 9-13 [½ thru 12]

46725 D: 7-16 [½ thru 12]; EE: 8-14 [½ thru 12]

HIGH GROUND



46223



46246



46222



46228



- Oiled nubuck leather upper with lightweight, foam-backed 900 denier nylon
- Abrasion-resistant leather on high-wear areas
- GORE-TEX waterproof breathable lining
- Thinsulate™ Ultra Insulation [46228, 46246]
- Lock and load lacing system: ghillies across the forefoot for secure fit and locking speed hooks for quick, quiet lacing
- Antimicrobial, open-cell PU footbed
- EVA cushioning and shock absorbing midsole
- Nylon shank
- Danner® Talon outsole offers lightweight, athletic performance on rugged terrain

STYLE #	HEIGHT	COLOR / PATTERN	WATERPROOF	INSULATION	WEIGHT
46222	8"	Realtree Xtra® Green	✓	-	46 oz
46223	8"	Gore™ Optifade™ Subalpine	✓	-	46 oz
46228	8"	Realtree Xtra®	✓	1000G	47 oz
46246	8"	Mossy Oak® Break-Up Country®	✓	400G	50 oz

SIZES AVAILABLE IN WOMEN'S [46230, 46241, 46248]. SEE PG. 97.

LAST DT4

D: 6-16 [½ thru 12]; EE: 8-14 [½ thru 12]

POWDERHORN



GORE-TEX *Thinsulate Ultra* Ortholite® // *STITCHDOWN*

- Waterproof, full-grain leather upper
- GORE-TEX waterproof breathable lining
- Thinsulate™ Ultra Insulation [43143, 43145]
- Multi-density foam patterning eliminates hotspots and pinch points
- Cushioning open-cell OrthoLite® footbed
- Bi-Fit stability board for underfoot comfort, reduced weight and added forefoot flex
- Handcrafted, stitchdown construction for strength and stability
- Danner® Powderhorn outsole provides ultra-durable traction in diverse terrain and weather conditions

STYLE #	HEIGHT	COLOR / PATTERN	WATERPROOF	INSULATION	WEIGHT
43141	10"	Brown	✓	-	69 oz
43143	10"	Brown	✓	400G	76 oz
43145	10"	Brown	✓	1000G	82 oz

SIZES

LAST 851

D: 7-16 [½ thru 12]; EE: 8-14 [½ thru 12]

SHARPTAIL



GORE-TEX Ortholite® // *TF*

- Waterproof, full-grain leather upper with lightweight 900 denier nylon
- Rear zipper for easy in and out [45025]
- GORE-TEX waterproof breathable lining
- Rugged hardware for secure fit and long-lasting performance
- Cushioning open-cell OrthoLite® footbed
- EVA cushioning and shock absorbing midsole
- Thermoplastic PU shank
- TERRA FORCE® platform offers lightweight performance and stability
- Danner® Sharptail outsole offers superior traction on hard-packed terrain

STYLE #	HEIGHT	COLOR / PATTERN	WATERPROOF	INSULATION	WEIGHT
45025	10"	Dark Brown	✓	-	51 oz
45026	8"	Dark Brown	✓	-	51 oz
45027	4.5"	Dark Brown	✓	-	48 oz

SIZES

LAST 851

45025 D: 7-16 [½ thru 12]; EE: 8-14 [½ thru 12]

45026, 45027 D: 7-15 [½ thru 12]; EE: 8-14 [½ thru 12]

EAST RIDGE



62111, 62115

GORE-TEX *Thinsulate Ultra* // **STITCHDOWN**  

- **Made in the USA with imported components**
- Waterproof, full-grain leather upper with lightweight 900 denier nylon
- GORE-TEX waterproof breathable lining
- Thinsulate™ Ultra Insulation [62115]
- Speed lacing system for secure, enhanced fit
- Cushioning PU footbed
- Handcrafted, stitchdown construction for strength and stability
- Lightweight, non-loading Vibram® Hunter outsole offers superior traction
- Recraftable

STYLE #	HEIGHT	COLOR / PATTERN	WATERPROOF	INSULATION	WEIGHT
62111	8"	Brown	✓	-	61 oz
62115	8"	Brown	✓	400G	66 oz

SIZES **LAST** 851

D: 6-16 [½ thru 12]; EE: 7-14 [½ thru 12]

GROUSE



57300

GORE-TEX // **STITCHDOWN** 

- **Made in the USA**
- Waterproof, full-grain leather upper with breathable Cordura® nylon
- GORE-TEX waterproof breathable lining
- Fiberglass shank
- Danner® Airthotic® heel cradle and arch support
- Handcrafted, stitchdown construction for strength and stability
- Patented Danner® Bob® self-cleaning outsole offers superior traction in snow and mud
- Recraftable

STYLE #	HEIGHT	COLOR / PATTERN	WATERPROOF	INSULATION	WEIGHT
57300	8"	Brown	✓	-	62 oz

SIZES **LAST** 650

D: 7-14 [½ thru 12]; EE: 6-13 [½ thru 12]; EEE: 8-13 [½ thru 12]

SIERRA



63100

GORE-TEX WATER **Thinsulate** INSULATION // **STITCHDOWN** 



- **Made in the USA**
- Waterproof, full-grain leather upper with breathable Cordura® nylon
- GORE-TEX waterproof breathable lining
- Thinsulate™ Insulation
- Fiberglass shank
- Danner® Airthotic® heel cradle and arch support
- Handcrafted, stitchdown construction for strength and stability
- Vibram® 1276 Sierra outsole for traction in diverse terrain
- Recraftable

STYLE #	HEIGHT	COLOR / PATTERN	WATERPROOF	INSULATION	WEIGHT
63100	8"	Brown	✓	200G	64 oz

SIZES AVAILABLE IN WOMEN'S [63100]. SEE PG. 97.

LAST 650

B: 8-14 [½ thru 12]; D: 7-15 [½ thru 12]; EE: 6-13 [½ thru 12]

CANADIAN



67200

GORE-TEX WATER **Thinsulate Ultra** INSULATION // **STITCHDOWN**



- **Made in the USA**
- Waterproof, full-grain leather upper
- Triple-stitched for ultimate durability and protection
- GORE-TEX waterproof breathable lining
- Thinsulate™ Ultra Insulation
- Fiberglass shank
- Danner® Airthotic® heel cradle and arch support
- Handcrafted, stitchdown construction for strength and stability
- Patented Danner® Bob® self-cleaning outsole offers superior traction in snow and mud
- Recraftable

STYLE #	HEIGHT	COLOR / PATTERN	WATERPROOF	INSULATION	WEIGHT
67200	10"	Brown	✓	600G	78 oz

SIZES

LAST 650

D: 7-14 [½ thru 12]; EE: 6-13 [½ thru 12]

SHARPTAIL SNAKE BOOT



45040

GORE-TEX OrthoLite® // TF

- 360° snake-proof protection
- Waterproof, full-grain leather upper with lightweight 900 denier nylon
- GORE-TEX waterproof breathable lining
- Rear gusset with rugged hardware offers adjustable fit and long-lasting performance
- Cushioning open-cell OrthoLite® footbed
- EVA cushioning and shock absorbing midsole
- Thermoplastic PU shank
- TERRA FORCE® platform offers lightweight performance and stability
- Danner® Sharptail outsole offers superior traction on hard-packed terrain

STYLE #	HEIGHT	COLOR / PATTERN	WATERPROOF	INSULATION	WEIGHT
45040	17"	Dark Brown	✓	-	64 oz

SIZES

LAST 851

D: 7-16 [1/2 thru 12]; EE: 8-14 [1/2 thru 12]

PRONGHORN® SNAKE BOOT



45033

45033

GORE-TEX OrthoLite® // TF

- 360° snake-proof protection
- Waterproof, full-grain CamoHide™ leather upper with lightweight 1000 denier nylon
- GORE-TEX waterproof breathable lining
- Side-zip entry for easy on and off
- Rugged hardware for secure fit and long-lasting performance
- Cushioning open-cell OrthoLite® footbed
- EVA cushioning and shock absorbing midsole
- Thermoplastic PU shank
- TERRA FORCE® platform offers lightweight performance and stability
- Danner® Pronghorn® outsole offers superior traction on rugged terrain

STYLE #	HEIGHT	COLOR / PATTERN	WATERPROOF	INSULATION	WEIGHT
45033	17"	Brown	✓	-	77 oz

SIZES

LAST DPH1-H

D: 7-16 [1/2 thru 12]; EE: 8-14 [1/2 thru 12]

WOMEN



TRAILCOMBER

Quick-Drying, Lightweight
and Ready for Summer

Our designers know how to make hiking boots – some of the highest-quality, rugged hiking boots on the market. But there are times when the climate and terrain demand lightweight, breathable footwear. The all-new Trailcomber is the perfect solution for warm-weather hiking and exploring. At only 16 oz per pair, it's the lightest, most agile Danner hiker in the line. The quick-drying, abrasion-resistant Cordura® upper adds protection, and the Vibram® Litebase outsole with Megagrip provides best-in-class traction without the extra weight.



NEW TRAILCOMBER



Ortholite® PlyoGO   MEGAGRIP

- Breathable, abrasion-resistant Cordura® knit upper
- EXO Lite Heel System provides a comfortable, secure fit
- Cushioning open-cell Ortholite® footbed
- Danner® PlyoGo lightweight, shock-absorbing EVA midsole
- Quick-drying construction with drainable midsole for wet environments
- 4mm heel-to-toe drop
- Nylon shank
- Vibram® Litebase technology drastically reduces outsole weight while maintaining the same grip and wear resistance
- Vibram® Trailcomber outsole with Megagrip technology offers superior grip on wet and dry surfaces

STYLE #	HEIGHT	COLOR / PATTERN	WATERPROOF	INSULATION	WEIGHT
63352	3"	Wheat/Bronze	-	-	16 oz
63353	3"	Woodrose/Spectra Yellow	-	-	16 oz

SIZES

LAST DT6.4MM

M: 5-11 (½ thru 11)

NEW RIVERCOMBER



Ortholite® PlyoGO   WAVEGRIP

- Breathable, abrasion-resistant Cordura® knit upper
- EXO Lite Heel System provides a comfortable, secure fit
- Cushioning open-cell Ortholite® footbed
- Danner® PlyoGo lightweight, shock-absorbing EVA midsole
- Quick-drying construction with drainable midsole for wet environments
- 4mm heel-to-toe drop
- Nylon shank
- Vibram® Wavegrip non-marking outsole directs water away from the foot for ultimate grip on wet surfaces

STYLE #	HEIGHT	COLOR / PATTERN	WATERPROOF	INSULATION	WEIGHT
63302	3"	Wild Dove/Bright Blue	-	-	17 oz
63303	3"	Bronze/Birch	-	-	17 oz

SIZES

LAST DT6.4MM

M: 5-11 (½ thru 11)

TRAIL 2650



NEW 61283



NEW 61284



61202



61203



61273



61274



61725

GORE-TEX OrthoLite // **TRAILGUARD** PlyoGO Vibram MEGAGRIP

- Lightweight, durable suede and textile upper
- GORE-TEX waterproof breathable lining [61202, 61203]
- Breathable mesh lining [61273, 61274, 61724, 61283, 61284]
- EXO Heel System provides maximum support and comfort with a reinforced external heel counter
- Cushioning open-cell OrthoLite® footbed
- TRAILGUARD platform with exposed TPU shank offers lightweight, athletic performance
- Danner® PlyoGo lightweight, shock-absorbing EVA midsole
- 8mm heel-to-toe drop
- Vibram® 460 outsole with Megagrip technology offers superior grip on wet and dry surfaces

STYLE #	HEIGHT	COLOR / PATTERN	WATERPROOF	INSULATION	WEIGHT
61202	3"	Mauve/Salmon	✓	-	21 oz
61203	3"	Current Blue	✓	-	21 oz
61273	3"	Atlantic Blue	-	-	18 oz
61274	3"	Hot Sauce	-	-	18 oz
61725	3"	Black/Gray	-	-	18 oz
61283	3"	Gray/Blue/Spectra Yellow	-	-	18 oz
61284	3"	Bronze/Wheat	-	-	18 oz

SIZES

M: 5-11 [1/2 thru 11]

LAST DT6

NEW TRAIL 2650 - FULL GRAIN



61279

61285

OrthoLite // TRAILGUARD PlyoGO  MEGAGRIP

- Durable, full-grain leather and nylon upper
- Breathable mesh lining
- EXO Heel System provides maximum support and comfort with a reinforced external heel counter
- Cushioning open-cell OrthoLite® footbed
- TRAILGUARD platform with exposed TPU shank offers lightweight, athletic performance
- Danner® PlyoGo lightweight, shock-absorbing EVA midsole
- 8mm heel-to-toe drop
- Vibram® 460 outsole with Megagrip technology offers superior grip on wet and dry surfaces

STYLE #	HEIGHT	COLOR / PATTERN	WATERPROOF	INSULATION	WEIGHT
61279	3"	Summer Wheat	-	-	18 oz
61285	3"	Rock Ridge	-	-	18 oz

SIZES

LAST DT6

M: 5-11 [½ thru 11]

TRAIL 2650 MID



61242

GORE-TEX® OrthoLite // TRAILGUARD PlyoGO  MEGAGRIP

- Durable, lightweight leather and textile upper
- GORE-TEX waterproof breathable lining
- EXO Heel System provides maximum support and comfort with a reinforced external heel counter
- Cushioning open-cell OrthoLite® footbed
- TRAILGUARD platform with exposed TPU shank offers lightweight, athletic performance
- Danner® PlyoGo lightweight, shock-absorbing EVA midsole
- 8mm heel-to-toe drop
- Vibram® 460 outsole with Megagrip technology offers superior grip on wet and dry surfaces

STYLE #	HEIGHT	COLOR / PATTERN	WATERPROOF	INSULATION	WEIGHT
61242	4"	Dark Gray/Salmon	✓	-	22 oz

SIZES

LAST DT6

M: 5-11 [½ thru 11]

INQUIRE CHUKKA



DANNER® DRY OrthoLite® // TRAILGUARD MEGAGRIP

- Lightweight, durable suede upper
- Danner® Dry waterproof protection
- Cushioning open-cell OrthoLite® footbed
- TRAILGUARD platform with exposed TPU shank offers lightweight, athletic performance
- Danner® Plyolite™ EVA midsole offers lasting support and rebound
- Custom Vibram® Inquire outsole with multi-directional lugs, adaptive heel and Megagrip technology offers superior grip on wet and dry surfaces

STYLE #	HEIGHT	COLOR / PATTERN	WATERPROOF	INSULATION	WEIGHT
64500	4"	Brown/Red	✓	-	27 oz
64501	4"	Gray/Plum	✓	-	27 oz
64502	4"	Mauve/Salmon	✓	-	27 oz
64503	4"	Brown/Cactus	✓	-	27 oz

SIZES

M: 5-11 [½ thru 11]

LAST DPDX

INQUIRE MID



DANNER® DRY OrthoLite® // TRAILGUARD MEGAGRIP

- Lightweight, durable suede and textile upper
- Danner® Dry waterproof protection
- Cushioning open-cell OrthoLite® footbed
- TRAILGUARD platform with exposed TPU shank offers lightweight, athletic performance
- Danner® Plyolite™ EVA midsole offers lasting support and rebound
- Custom Vibram® Inquire outsole with multi-directional lugs, adaptive heel and Megagrip technology offers superior grip on wet and dry surfaces

STYLE #	HEIGHT	COLOR / PATTERN	WATERPROOF	INSULATION	WEIGHT
64530	5"	Brown/Red	✓	-	29 oz
64531	5"	Dark Gray/Salmon	✓	-	29 oz
64532	5"	Brown/Cactus	✓	-	29 oz

SIZES

M: 5-11 [½ thru 11]

LAST DPDX

MOUNTAIN 600



36235



62245



62256

DANNER® DRY Ortholite® Vibram® MEGAGRIP

- Waterproof suede upper
- Danner® Dry waterproof protection
- Cushioning open-cell OrthoLite® footbed
- Vibram® SPE midsole for maximum rebound, comfort and support
- Nylon shank
- TPU heel frame to enhance support and stability
- Vibram® Fuga outsole with Megagrip technology offers superior grip on wet and dry surfaces

STYLE #	HEIGHT	COLOR / PATTERN	WATERPROOF	INSULATION	WEIGHT
36235	4.5"	Java/Bossa Nova	✓	-	30 oz
62245	4.5"	Brown/Red	✓	-	30 oz
62256	4.5"	Hazelwood/Balsam Green	✓	-	30 oz

SIZES LAST DPDX

36235 M: 5.5-10 [½ thru 10]

62245 M: 6-11 [½ thru 11]

62256 M: 5-11 [½ thru 11]

MOUNTAIN 600 - FULL GRAIN



62251



62268



62259



62260

DANNER® DRY Ortholite® Vibram® MEGAGRIP

- Durable full-grain leather upper
- Danner® Dry waterproof protection
- Two lace options
- Cushioning open-cell OrthoLite® footbed
- Vibram® SPE midsole for maximum rebound, comfort and support
- Nylon shank
- TPU heel frame to enhance support and stability
- Vibram® Fuga outsole with Megagrip technology offers superior grip on wet and dry surfaces

STYLE #	HEIGHT	COLOR / PATTERN	WATERPROOF	INSULATION	WEIGHT
62251	4.5"	Rich Brown	✓	-	30 oz
62259	4.5"	Saddle Tan	✓	-	30 oz
62260	4.5"	Gray	✓	-	30 oz
62268	4.5"	Dark Brown	✓	-	30 oz

SIZES LAST DPDX

62251 M: 5-11 [½ thru 11]

62259, 62260, 62268 M: 5.5-10 [½ thru 10]

MOUNTAIN 600 - ENDUROWEAVE



62283

OrthoLite®   MEGAGRIP

- Breathable textile upper with carbon wash for added durability
- Cushioning open-cell OrthoLite® footbed
- Vibram® SPE midsole for maximum rebound, comfort and support
- Nylon shank
- TPU heel frame to enhance support and stability
- Vibram® Fuga outsole with Megagrip technology offers superior grip on wet and dry surfaces

STYLE #	HEIGHT	COLOR / PATTERN	WATERPROOF	INSULATION	WEIGHT
62283	4.5"	Timberwolf	-	-	27 oz

SIZES

LAST DPDX

M: 5-11 [½ thru 11]

MOUNTAIN 600 - INSULATED



62146

 PRIMALOFT® DANNER® DRY OrthoLite®  

- Premium full-grain leather upper with 200G PrimaLoft® insulation
- Danner® Dry waterproof protection
- Cushioning, open-cell OrthoLite® footbed
- Vibram® SPE midsole for maximum rebound, comfort and support
- Nylon shank
- TPU heel frame to enhance support and stability
- Vibram® Nisqually Arctic Grip outsole with Arctic Grip technology offers superior grip on wet and dry surfaces

STYLE #	HEIGHT	COLOR / PATTERN	WATERPROOF	INSULATION	WEIGHT
62146	4.5"	Jet Black/Taupe	✓	200G	30 oz

SIZES

LAST DPDX

M: 5-11 [½ thru 11]

EXPLORER 650



65718

DANNER® DRY Ortholite®  MEGAGRIP

- Durable suede and nylon upper
- Danner® Dry waterproof protection
- Two lace options
- Cushioning open-cell OrthoLite® footbed
- Vibram® SPE midsole for maximum rebound, comfort and support
- Exposed TPU shank
- Custom Vibram® Escape outsole with Megagrip technology offers superior grip on wet and dry surfaces

STYLE #	HEIGHT	COLOR / PATTERN	WATERPROOF	INSULATION	WEIGHT
65718	6"	Gray/Sky Blue	✓	-	26 oz

SIZES

LAST DPDX

M: 5-11 [1/2 thru 11]

EXPLORER 650 - FULL GRAIN



65715

65717

DANNER® DRY Ortholite®  MEGAGRIP

- Durable full-grain leather and nylon upper
- Danner® Dry waterproof protection
- Cushioning open-cell OrthoLite® footbed
- Vibram® SPE midsole for maximum rebound, comfort and support
- Exposed TPU shank
- Custom Vibram® Escape outsole with Megagrip technology offers superior grip on wet and dry surfaces

STYLE #	HEIGHT	COLOR / PATTERN	WATERPROOF	INSULATION	WEIGHT
65715	6"	Birch/Burnt Orange	✓	-	29 oz
65717	6"	Gray/Atlantic Blue	✓	-	29 oz

SIZES

LAST DPDX

M: 5-11 [1/2 thru 11]

ARCTIC 600 CHELSEA



67371

 **PRIMALOFT**  **DANNER® DRY**  **OrthoLite®**   **ARCTIC GRIP**

- Premium suede upper with 200G PrimaLoft® insulation
- Danner® Dry waterproof protection
- Cushioning open-cell OrthoLite® footbed
- Vibram® SPE midsole for maximum rebound, comfort and support
- Nylon shank
- TPU heel frame to enhance support and stability
- Vibram® Nisqually Arctic Grip outsole with Arctic Grip technology offers superior grip on wet and dry surfaces

STYLE #	HEIGHT	COLOR / PATTERN	WATERPROOF	INSULATION	WEIGHT
67371	5"	Black	✓	200G	27 oz

SIZES **LAST** DPDX

M: 5-11 [½ thru 11]

ARCTIC 600 SIDE-ZIP



67333

67332

 **PRIMALOFT**  **DANNER® DRY**  **OrthoLite®**   **ARCTIC GRIP**

- Premium suede upper with 200G PrimaLoft® insulation
- Danner® Dry waterproof protection
- Semi-locking YKK® Side-Zip
- Cushioning open-cell OrthoLite® footbed
- Vibram® SPE midsole for maximum rebound, comfort and support
- Nylon shank
- TPU heel frame to enhance support and stability
- Vibram® Nisqually Arctic Grip outsole with Arctic Grip technology offers superior grip on wet and dry surfaces

STYLE #	HEIGHT	COLOR / PATTERN	WATERPROOF	INSULATION	WEIGHT
67332	5"	Brown/Red	✓	200G	37 oz
67333	5"	Plum	✓	200G	37 oz

SIZES **LAST** DPDX

M: 5-11 [½ thru 11]

CRATER RIM



37414

GORE-TEX
PERFORMANCE



- **Made in the USA**
- Durable, waterproof nubuck leather upper
- 360° abrasion-resistant Vibram® rubber rand
- GORE-TEX waterproof breathable lining
- D-ring hardware and lace-to-toe design for secure fit
- Cushioning PU footbed
- Fiberglass shank
- Vibram® Bifida outsole offers super traction on rugged terrain

STYLE #	HEIGHT	COLOR / PATTERN	WATERPROOF	INSULATION	WEIGHT
37414	6"	Brown	✓	-	58 oz

SIZES **LAST** 610

M: 5-11 [½ thru 10]

EXPLORER



45200

GORE-TEX
PERFORMANCE

// *STITCHDOWN*



- **Made in the USA**
- Durable full-grain leather upper
- GORE-TEX waterproof breathable lining
- Danner® Airthotic® heel cradle and arch support
- Fiberglass shank
- Handcrafted, stitchdown construction for strength and stability
- Vibram® 148 Kletterlift outsole offers superior traction, stability and shock absorption on rugged terrain
- Recraftable

STYLE #	HEIGHT	COLOR / PATTERN	WATERPROOF	INSULATION	WEIGHT
45200	6"	Brown	✓	-	58 oz

SIZES **LAST** 650

M: 5-10 [½ thru 10]

MOUNTAIN LIGHT II



30800

GORE-TEX // **STITCHDOWN** 



- **Made in the USA**
- Durable, one-piece full-grain leather upper
- GORE-TEX waterproof breathable lining
- Danner® Airthotic® heel cradle and arch support
- Fiberglass shank
- Handcrafted, stitchdown construction for strength and stability
- Vibram® 148 Kletterlift outsole offers superior traction, stability and shock absorption on rugged terrain
- Recraftable

STYLE #	HEIGHT	COLOR / PATTERN	WATERPROOF	INSULATION	WEIGHT
30800	5"	Brown	✓	-	62 oz

SIZES

LAST 650

M: 5-11 [½ thru 10]

DANNER® LIGHT II



33000

GORE-TEX // **STITCHDOWN** 



- **Made in the USA**
- Durable nubuck leather upper with rugged 1000 denier nylon
- GORE-TEX waterproof breathable lining
- Danner® Airthotic® heel cradle and arch support
- Fiberglass shank
- Handcrafted, stitchdown construction for strength and stability
- Vibram® 148 Kletterlift outsole offers superior traction, stability and shock absorption on rugged terrain
- Recraftable

STYLE #	HEIGHT	COLOR / PATTERN	WATERPROOF	INSULATION	WEIGHT
33000	6"	Brown	✓	-	61 oz

SIZES

LAST 650

M: 5.5-10 [½ thru 10]

NEW CAPRINE



31364

31365

OrthoLite®   MEGAGRIP

- Durable nubuck and abrasion-resistant knit upper
- Water-resistant and stain-proof DWR coated knit upper
- Cushioning open-cell OrthoLite® footbed
- Danner® Plyolite™ EVA midsole offers lasting support and rebound
- TPU shank
- Exclusive Vibram® Caprine Traction outsole with Megagrip technology features increased surface contact for superior grip from city to trail

STYLE #	HEIGHT	COLOR / PATTERN	WATERPROOF	INSULATION	WEIGHT
31364	4"	Black/Vapor	-	-	26 oz
31365	4"	Dusty Jade/Brindle	-	-	26 oz

SIZES. **LAST 808**

M: 5.5-10 [½ thru 10]

NEW CAPRINE LOW



31326

31327

OrthoLite®   MEGAGRIP

- Durable nubuck and abrasion-resistant knit upper
- Water-resistant and stain-proof DWR coated knit upper
- Cushioning open-cell OrthoLite® footbed
- Danner® Plyolite™ EVA midsole offers lasting support and rebound
- TPU shank
- Exclusive Vibram® Caprine Traction outsole with Megagrip technology features increased surface contact for superior grip from city to trail

STYLE #	HEIGHT	COLOR / PATTERN	WATERPROOF	INSULATION	WEIGHT
31326	3"	Black/Vapor	-	-	21 oz
31327	3"	Summer Wheat	-	-	21 oz

SIZES. **LAST 808**

M: 5.5-10 [½ thru 10]

NEW CAPRINE LOW SUEDE



31331

31330

OrthoLite® Vibram® MEGAGRIP

- Durable suede leather upper
- Cushioning open-cell OrthoLite® footbed
- Danner® Plyolite™ EVA midsole offers lasting support and rebound
- TPU shank
- Exclusive Vibram® Caprine Traction outsole with Megagrip technology features increased surface contact for superior grip from city to trail

STYLE #	HEIGHT	COLOR / PATTERN	WATERPROOF	INSULATION	WEIGHT
31330	3"	Plaza Taupe	-	-	21 oz
31331	3"	Antique Bronze	-	-	21 oz

SIZES **LAST** 808

M: 5.5-10 [½ thru 10]

CAPRINE EVO



31283

31284

DANNER® DRY OrthoLite® Vibram® MEGAGRIP

- Durable leather and nylon upper
- Danner® Dry waterproof protection
- Cushioning open-cell OrthoLite® footbed
- Danner® Plyolite™ EVA midsole offers lasting support and rebound
- TPU shank
- Exclusive Vibram® Caprine Traction outsole with Megagrip technology features increased surface contact for superior grip from city to trail

STYLE #	HEIGHT	COLOR / PATTERN	WATERPROOF	INSULATION	WEIGHT
31283	4.5"	Cathay Spice	✓	-	26 oz
31284	4.5"	Chocolate/Taupe	✓	-	26 oz

SIZES **LAST** 808

M: 5.5-10 [½ thru 10]

NEW JUNGLE 917



32722



- Durable suede and nylon upper
- Breathable mesh lining
- Cushioning open-cell Ortholite® footbed
- Vibram® SPE midsole for maximum rebound, comfort and support
- TPU shank
- Exclusive Vibram® 917 outsole featuring XS Trek® for optimal traction in urban environments
- Modernized stitchdown construction for classic Danner look and added stability

STYLE #	HEIGHT	COLOR / PATTERN	WATERPROOF	INSULATION	WEIGHT
32722	4.5"	Prairie Sand	-	-	22 oz

SIZES **LAST** 971X

M: 5-10 [1/2 thru 10]

VERTIGO 917



NEW 32389



32385



32386



- Durable full-grain leather upper
- GORE-TEX waterproof breathable lining
- Two lace options
- Cushioning open-cell OrthoLite® footbed
- Vibram® SPE midsole for maximum rebound, comfort and support
- Exclusive Vibram® 917 outsole featuring XS Trek® for optimal traction in urban environments
- Modernized stitchdown construction for classic Danner look and added stability

STYLE #	HEIGHT	COLOR / PATTERN	WATERPROOF	INSULATION	WEIGHT
32385	5"	Black	✓	-	29 oz
32386	5"	Cathay Spice	✓	-	29 oz
32389	5"	Prairie Sand	✓	-	29 oz

SIZES **LAST** 971X

M: 5.5-10 [1/2 thru 10]

ADRIKA HIKER



DANNER® DRY Ortholite®

- Durable nubuck and nylon upper [30134, 30135]
- Waterproof suede upper [30130, 30131]
- Danner® Dry waterproof protection
- Two lace options
- Cushioning open-cell OrthoLite® footbed
- Danner® Plyolite™ EVA midsole offers lasting support and rebound
- Danner® Adrika outsole with multi-direction lugs

STYLE #	HEIGHT	COLOR / PATTERN	WATERPROOF	INSULATION	WEIGHT
30130	5"	Ash	✓	-	29 oz
30131	5"	Sienna	✓	-	29 oz
30134	5"	Prairie Sand	✓	-	29 oz
30135	5"	Rock Ridge	✓	-	29 oz

SIZES

LAST DPDX

30130, 30131	M: 5-10 [½ thru 10]
30134, 30135	M: 5.5-10 [½ thru 10]

NEW JAG - NON-WATERPROOF



Ortholite®

- Durable suede and nylon upper
- Breathable mesh lining
- Two lace options
- Cushioning open-cell OrthoLite® footbed
- Lightweight, shock-absorbing EVA midsole
- Danner® Waffle rubber outsole with classic hiking tread pattern

STYLE #	HEIGHT	COLOR / PATTERN	WATERPROOF	INSULATION	WEIGHT
37242	4.5"	Antique Bronze/Summer Wheat	-	-	29 oz

SIZES

LAST DPDX

M: 5.5-10 [½ thru 10]

JAG



DANNER® DRY OrthoLite®

- Durable nubuck and nylon upper [37346, 37347]
- Durable suede and textile upper [37356, 37357]
- Danner® Dry waterproof protection
- Two lace options
- Cushioning open-cell OrthoLite® footbed
- Lightweight, shock-absorbing EVA midsole
- Danner® Waffle rubber outsole with classic hiking tread pattern

STYLE #	HEIGHT	COLOR / PATTERN	WATERPROOF	INSULATION	WEIGHT
37346	4.5"	Java/Black	✓	-	29 oz
37347	4.5"	Sandy Taupe	✓	-	29 oz
37356	4.5"	Steel Gray/Blue Wing Teal	✓	-	29 oz
37357	4.5"	Monk's Robe/Bossa Nova	✓	-	29 oz

SIZES

M: 5.5-10 [½ thru 10]

LAST DPDX

JAG - FULL GRAIN



DANNER® DRY OrthoLite®

- Premium full-grain leather and textile upper
- Danner® Dry waterproof protection
- Two lace options
- Cushioning open-cell OrthoLite® footbed
- Lightweight, shock-absorbing EVA midsole
- Danner® Waffle rubber outsole with classic hiking tread pattern

STYLE #	HEIGHT	COLOR / PATTERN	WATERPROOF	INSULATION	WEIGHT
32231	4.5"	Brindle/Goblin Blue	✓	-	29 oz
37359	4.5"	Distressed Brown/Deep Teal	✓	-	29 oz

SIZES

M: 5.5-10 [½ thru 10]

LAST DPDX

JAG LOW



OrthoLite®

- Durable nubuck and nylon upper
- Breathable mesh lining
- Two lace options
- Cushioning open-cell OrthoLite® footbed
- Lightweight, shock-absorbing EVA midsole
- Danner® Waffle rubber outsole with classic hiking tread pattern

STYLE #	HEIGHT	COLOR / PATTERN	WATERPROOF	INSULATION	WEIGHT
37398	3"	Timberwolf/Hot Sauce	-	-	22 oz
37399	3"	Chocolate Chip	-	-	22 oz
37403	3"	Brindle/Jungle Green	-	-	22 oz
37404	3"	Antique Bronze/Summer Wheat	-	-	22 oz

SIZES

LAST DPDX

M: 5.5-10 [½ thru 10]

MOUNTAIN 600 CHELSEA



OrthoLite®



- Premium suede upper
- Flexible and breathable Ariaprene™ collar material
- Cushioning open-cell OrthoLite® footbed
- Vibram® SPE midsole for maximum rebound, comfort and support
- Vibram® Fuga outsole with Megagrip technology offers superior grip on wet and dry surfaces

STYLE #	HEIGHT	COLOR / PATTERN	WATERPROOF	INSULATION	WEIGHT
36218	4"	Wild Dove	-	-	24 oz
36219	4"	Rock Ridge/Black Olive	-	-	24 oz
36237	4"	Warm Sand/Poppy	-	-	24 oz
36238	4"	Jet Black	-	-	24 oz

SIZES

LAST DPDX

M: 5.5-10 [½ thru 10]

PUB GARDEN



30363

30362

DANNER® DRY Ortholite®

- Durable leather upper
- Danner® Dry waterproof protection
- Two lace options
- Cushioning open-cell OrthoLite® footbed
- Lightweight PU midsole
- Bi-Fit stability board for underfoot comfort, reduced weight and added forefoot flex
- Danner® Pub Garden oil-and-slip-resistant outsole

STYLE #	HEIGHT	COLOR / PATTERN	WATERPROOF	INSULATION	WEIGHT
30362	6"	Jet Black	✓	-	32 oz
30363	6"	Sandy Taupe	✓	-	32 oz

SIZES.

LAST DPDX2

M: 5.5-10 [½ thru 10]

PUB GARDEN CHELSEA



30332

30333

DANNER® DRY Ortholite®

- Durable leather upper
- Danner® Dry waterproof protection
- Cushioning open-cell OrthoLite® footbed
- Lightweight PU midsole
- Bi-Fit stability board for underfoot comfort, reduced weight and added forefoot flex
- Danner® Pub Garden oil-and-slip-resistant outsole

STYLE #	HEIGHT	COLOR / PATTERN	WATERPROOF	INSULATION	WEIGHT
30332	4.5"	Jet Black	✓	-	29 oz
30333	4.5"	Java	✓	-	29 oz

SIZES

LAST DPDX2

M: 5.5-10 [½ thru 10]

NEW DANNER® JACK III



35703

35702

Ortholite®

- Premium full-grain leather upper
- Durable and moisture-wicking herringbone lining
- Cushioning open-cell Ortholite® footbed
- Leather and EVA midsole offers underfoot comfort
- Heritage hiker silhouette with classic 270 degree stitchdown construction
- Danner® Tualatin outsole provides traction in and out of urban environments

STYLE #	HEIGHT	COLOR / PATTERN	WATERPROOF	INSULATION	WEIGHT
35702	6"	Black	-	-	42 oz
35703	6"	Mahogany	-	-	42 oz

SIZES

LAST 971X

M: 5.5-10 [½ thru 10]

NEW DANNER® JACK III CHELSEA



35752

35753

Ortholite®

- Premium full-grain leather upper
- Durable and moisture-wicking herringbone lining
- Cushioning open-cell Ortholite® footbed
- Leather and EVA midsole offers underfoot comfort
- Heritage hiker silhouette with classic 270 degree stitchdown construction
- Danner® Tualatin outsole provides traction in and out of urban environments

STYLE #	HEIGHT	COLOR / PATTERN	WATERPROOF	INSULATION	WEIGHT
35752	6"	Black	-	-	42 oz
35753	6"	Mahogany	-	-	42 oz

SIZES

LAST 971X

M: 5.5-10 [½ thru 10]

RUN TIME



NEW 12377

12373

12374

OrthoLite®

- Durable and lightweight, no-sew textile upper
- Breathable mesh lining
- Cushioning open-cell OrthoLite® footbed
- Danner® Plyolite™ EVA midsole offers lasting support and rebound
- Nylon shank
- Danner® Run Time oil-and-slip-resistant rubber outsole offers superior traction and durability
- Non-metallic toe meets or exceeds ASTM F2413-11 I/75 C/75 EH [12373, 12377]
- Non-metallic toe meets or exceeds ASTM F2413-11 M I/75 C/75 SD [12374]
- Electrostatic Dissipative [ESD] construction reduces excess static electricity [12374]

STYLE #	HEIGHT	COLOR / PATTERN	WATERPROOF	INSULATION	SAFETY	WEIGHT
12373	3"	Teal	-	-	NMT	26 oz
12374	3"	Black	-	-	NMT/ESD	26 oz
12377	3"	Dark Shadow	-	-	NMT	26 oz

SIZES

M: 5-11 [½ thru 10]

LAST DPDX2

SPRINGFIELD LOW



12212

12213

OrthoLite®

- Nubuck and mesh upper
- Mesh lining for breathable comfort in indoor work environments
- 100% metal free hardware
- Cushioning open-cell OrthoLite® footbed
- Danner® Plyolite™ EVA midsole offers lasting support and rebound
- Nylon shank
- Danner® Springfield ESD outsole with Flex-X technology provides stability and traction with minimal weight [12212]
- Danner® Springfield indoor-specific outsole with Flex-X technology provides stability and traction with minimal weight [12213]
- Non-metallic toe meets or exceeds ASTM F2413-11 I/75 C/75 EH [12213]
- Non-metallic toe meets or exceeds ASTM F2413-11 M I/75 C/75 SD [12212]
- Electrostatic Dissipative (ESD) construction reduces excess static electricity [12212]

STYLE #	HEIGHT	COLOR / PATTERN	WATERPROOF	INSULATION	SAFETY	WEIGHT
12212	3"	Gray/Purple	-	-	NMT/ESD	32 oz
12213	3"	Gray/Blue	-	-	NMT	32 oz

SIZES

M: 5-11 [½ thru 10]

LAST 851

SPRINGFIELD



12243

12248, 12250

DANNER® DRY OrthoLite®

- Durable, waterproof, oiled nubuck and mesh upper
- Danner® Dry waterproof protection [12248, 12250]
- Cushioning open-cell OrthoLite® footbed
- Danner® Plyolite™ EVA midsole offers lasting support and rebound
- Nylon shank
- Danner® Springfield outsole with Flex-X technology provides stability and traction with minimal weight
- Non-metallic toe meets or exceeds ASTM F2413-11 I/75 C/75 EH [12243, 12250]
- Electrical hazard protection ASTM F2892-11 EH [12248]

STYLE #	HEIGHT	COLOR / PATTERN	WATERPROOF	INSULATION	SAFETY	WEIGHT
12243	4.5"	Brown/Bronze	-	-	NMT	38 oz
12248	4.5"	Gray/Lavender	✓	-	-	32 oz
12250	4.5"	Gray/Lavender	✓	-	NMT	38 oz

SIZES

M: 5-11 [½ thru 10]

LAST 851

VICIOUS



13853

GORE-TEX® // TRAILGUARD Vibram®

- Durable, waterproof leather upper with abrasion-resistant heel cap
- GORE-TEX waterproof breathable lining
- Cushioning PU footbed
- Dual-density EVA, cushioning and shock-absorbing midsole
- Nylon shank
- TRAILGUARD platform offers lightweight, athletic performance
- Vibram® Vicious oil-and-slip-resistant outsole offers superior indoor and outdoor traction with a low-profile 90° heel
- Non-metallic toe meets or exceeds ASTM F2413-11 I/75 C/75 EH

STYLE #	HEIGHT	COLOR / PATTERN	WATERPROOF	INSULATION	SAFETY	WEIGHT
13853	4"	Brown/Green	✓	-	NMT	40 oz

SIZES

M: 5-11 [½ thru 10]

LAST DT5H

STRONGHOLD



16720, 16721



16715, 16717

DANNER® DRY OrthoLite® Vibram

- Durable, waterproof full-grain leather upper
- Danner® Dry waterproof protection
- Cushioning open-cell OrthoLite® footbed
- Vibram® SPE midsole for maximum rebound, comfort and support
- Nylon shank
- Custom Vibram® Stronghold oil-and-slip-resistant outsole offers traction on wet and dry surfaces with a 90° heel
- Non-metallic toe meets or exceeds ASTM F2413-11 I/75 C/75 EH [16717, 16721]
- Electrical hazard protection ASTM F2892-11 EH [16715, 16720]

STYLE #	HEIGHT	COLOR / PATTERN	WATERPROOF	INSULATION	SAFETY	WEIGHT
16715	5"	Gray	✓	-	-	32 oz
16717	5"	Gray	✓	-	NMT	40 oz
16720	5"	Black	✓	-	-	32 oz
16721	5"	Black	✓	-	NMT	40 oz

SIZES

M: 5-11 [½ thru 10]

LAST DPDX2



BULL RUN MOC TOE



15575, 15576

OrthoLite® // *STITCHDOWN*



- Made in the USA with imported components
- Durable, oiled, full-grain leather upper
- Moc toe design with contrasting stitch
- Cushioning open-cell OrthoLite® footbed
- Steel shank
- Handcrafted, stitchdown construction for strength and stability
- Danner® Wedge non-marking, oil-and-slip-resistant outsole offers superior traction
- Steel toe meets or exceeds ASTM F2413-11 I/75 C/75 EH [15576]
- Recraftable

STYLE #	HEIGHT	COLOR / PATTERN	WATERPROOF	INSULATION	SAFETY	WEIGHT
15575	6"	Brown	-	-	-	42 oz
15576	6"	Brown	-	-	ST	45 oz

SIZES

LAST 329

M: 5-11 [½ thru 10]

QUARRY® USA



17323, 17325

GORE-TEX® OrthoLite® // *STITCHDOWN* Vibram®



- Made in the USA with imported components
- Durable waterproof full-grain leather upper
- Triple-stitched for ultimate durability and protection
- GORE-TEX waterproof breathable lining
- Rugged hardware for secure fit and long-lasting performance
- Cushioning open-cell OrthoLite® footbed
- Fiberglass shank
- Handcrafted, stitchdown construction for strength and stability
- Vibram® Quarry oil-and-slip-resistant outsole offers superior traction and debris release
- Alloy toe meets or exceeds ASTM F2413-11 I/75 C/75 EH [17325]
- Electrical hazard protection ASTM F2892-11 EH [17323]
- Recraftable

STYLE #	HEIGHT	COLOR / PATTERN	WATERPROOF	INSULATION	SAFETY	WEIGHT
17323	7"	Black	✓	-	-	61 oz
17325	7"	Black	✓	-	AT	64 oz

SIZES

LAST 610

M: 5-11 [½ thru 10]

RAIN FOREST



14100

GORE-TEX // STITCHDOWN Vibram



- **Made in the USA**
- Durable full-grain leather upper
- Triple-stitched for ultimate durability and protection
- GORE-TEX waterproof breathable lining
- Danner® Airthotic® heel cradle and arch support
- Fiberglass shank
- Handcrafted, stitchdown construction for strength and stability
- Vibram® 132 Montagna angled outsole offers superior traction on steep terrain
- Electrical hazard protection ASTM F2892-11 EH
- Recraftable

STYLE #	HEIGHT	COLOR / PATTERN	WATERPROOF	INSULATION	SAFETY	WEIGHT
14100	8"	Black	✓	-	-	74 oz

SIZES AVAILABLE IN EXTENDED SIZES

LAST 650

M: 5-10 [½ thru 10]

FLASHPOINT II



18102

// STITCHDOWN Vibram FIRE & ICE



- **Made in the USA with domestic and imported components**
- Fire, puncture and water-resistant 8 oz full-grain leather upper
- Triple-stitched with Nomex® fire-resistant thread for superior fit and protection
- Additional 7 oz leather layer in toe for abrasion resistance
- Cushioning PU footbed
- Steel shank
- Handcrafted, stitchdown construction for strength and stability
- Vibram® 360° Logger Fire & Ice outsole offers heat resistance and superior edging and traction on rugged terrain
- Electrical hazard protection ASTM F2892-11 EH
- NFPA 1977: 2016 edition certified
- Recraftable

STYLE #	HEIGHT	COLOR / PATTERN	WATERPROOF	INSULATION	SAFETY	WEIGHT
18102	10"	Black	-	-	-	101 oz

SIZES

LAST 74

M: 6-11 [½ thru 11]; W: 6-11 [½ thru 11]

PROWESS



22310



22311



22310

- Meets AR 670-1 (Army) and AFI 36-2903 (Air Force) requirements for optional wear [22311]
- Leather and denier nylon upper with side zip [22310]
- Suede and 1000 denier nylon upper [22311]
- Polishable toe [22310]
- Breathable mesh lining
- Cushioning PU footbed
- Abrasion-resistant EVA midsole
- Danner® Tanicus slip-resistant outsole with pentagonal lug pattern offers superior durability and stability

STYLE #	HEIGHT	COLOR / PATTERN	WATERPROOF	INSULATION	SAFETY	WEIGHT
22310	8"	Black	-	-	-	35 oz
22311	8"	Coyote	-	-	-	32 oz

SIZES

LAST DT5

M: 5-12 [½ thru 10]; W: 5-11 [½ thru 10]

KINETIC



28080

GORE-TEX®

- Durable, waterproof, polishable full-grain leather upper with ripstop ballistic nylon
- GORE-TEX waterproof breathable lining
- Speed lacing system for secure, enhanced fit
- Cushioning PU footbed
- PU midsole
- Nylon shank
- Danner® Kinetic slip-resistant rubber outsole offers superior surface contact and traction

STYLE #	HEIGHT	COLOR / PATTERN	WATERPROOF	INSULATION	SAFETY	WEIGHT
28080	6"	Black	✓	-	-	38 oz

SIZES

LAST 1368

M: 5-11 [½ thru 11]

PATROL



25200

GORE-TEX // *STITCHDOWN* 



- **Made in the USA**
- Durable, waterproof, polishable full-grain leather upper with lightweight 1000 denier nylon
- GORE-TEX waterproof breathable lining
- Lace-to-toe design for secure fit
- Fiberglass shank
- Handcrafted, stitchdown construction for strength and stability
- Vibram® 1276 Sierra outsole for traction in diverse terrain
- Recraftable

STYLE #	HEIGHT	COLOR / PATTERN	WATERPROOF	INSULATION	SAFETY	WEIGHT
25200	6"	Black	✓	-	-	59 oz

SIZES


LAST 650

M: 5-10 [½ thru 10]

STRIKER® BOLT



26631

GORE-TEX // *TFN* 

- Durable, polishable, PU coated leather and nylon upper
- GORE-TEX waterproof breathable lining
- Lace garage
- Cushioning PU footbed
- TERRA FORCE® NEXT™ platform combines an internal and external shank system to provide arch support and torsion control
- Vibram® SPE midsole for maximum rebound, comfort and support
- Bi-Fit stability board for underfoot comfort, reduced weight and added forefoot flex
- Vibram® Striker® Bolt outsole is slip-resistant and offers maximum surface contact while gripping on and off pavement

STYLE #	HEIGHT	COLOR / PATTERN	WATERPROOF	INSULATION	SAFETY	WEIGHT
26631	4.5"	Black	✓	-	-	40 oz

SIZES

LAST 851

M: 5-12 [½ thru 10]

ACADIA®



21210, 22600, 69210

GORE-TEX® Thinsulate® Ultra INSULATION Thinsulate® INSULATION // STITCHDOWN Vibram® 

- **Made in the USA**
- Durable, waterproof, polishable full-grain leather upper with lightweight 1000 denier nylon
- GORE-TEX waterproof breathable lining
- Available with Thinsulate™ Insulation and Thinsulate™ Ultra Insulation [22600, 69210]
- Lace-to-toe design for secure fit
- Fiberglass shank
- Handcrafted, stitchdown construction for strength and stability
- Vibram® 148 Kletterlift outsole offers superior traction, stability and shock absorption on rugged terrain
- Recraftable

STYLE #	HEIGHT	COLOR / PATTERN	WATERPROOF	INSULATION	SAFETY	WEIGHT
21210	8"	Black	✓	-	-	66 oz
22600	8"	Black	✓	400G	-	69 oz
69210	8"	Black	✓	200G	-	66 oz

SIZES

M: 5-10 [½ thru 10]

LAST 650

RECON



69410

GORE-TEX® Thinsulate® INSULATION // STITCHDOWN Vibram® 

- **Made in the USA**
- Durable, waterproof, polishable full-grain leather upper
- GORE-TEX waterproof breathable lining
- Thinsulate™ Insulation
- Lace-to-toe design for secure fit
- Fiberglass shank
- Handcrafted, stitchdown construction for strength and stability
- Vibram® 148 Kletterlift outsole offers superior traction, stability and shock absorption on rugged terrain
- Recraftable

STYLE #	HEIGHT	COLOR / PATTERN	WATERPROOF	INSULATION	SAFETY	WEIGHT
69410	8"	Black	✓	200G	-	66 oz

SIZES

M: 5-10 [½ thru 10]

LAST 650

FORT LEWIS



29110, 69110

GORE-TEX[®] Thinsulate[™] INSULATION // STITCHDOWN Vibram



- **Made in the USA**
- Durable, waterproof, polishable full-grain leather upper
- GORE-TEX waterproof breathable lining
- Thinsulate[™] Insulation [69110]
- Lace-to-toe design for secure fit
- Fiberglass shank
- Handcrafted, stitchdown construction for strength and stability
- Vibram[®] 148 Kletterlift outsole offers superior traction, stability and shock absorption on rugged terrain
- Recraftable

STYLE #	HEIGHT	COLOR / PATTERN	WATERPROOF	INSULATION	SAFETY	WEIGHT
29110	10"	Black	✓	-	-	74 oz
69110	10"	Black	✓	200G	-	74 oz

SIZES

M: 5-10 [1/2 thru 10]

LAST 650

RIVOT TFX[®]



51516

GORE-TEX[®] Thinsulate[™] Ultra INSULATION // TFX Vibram



- **Made in the USA**
- **Meets AR 670-1 (Army) and AFI 36-2903 (Air Force) requirements for optional wear**
- Durable, rough-out leather upper with lightweight 1000 denier nylon
- GORE-TEX waterproof breathable lining
- Thinsulate[™] Ultra Insulation
- Speed lacing system for secure, enhanced fit
- Cushioning PU footbed
- Fiberglass shank
- TERRA FORCE[®] X platform offers lightweight performance and stability
- Danner[®] Vibram[®] Rivot TFX 360° lugged outsole offers superior grip and mobility for increased pivot movements

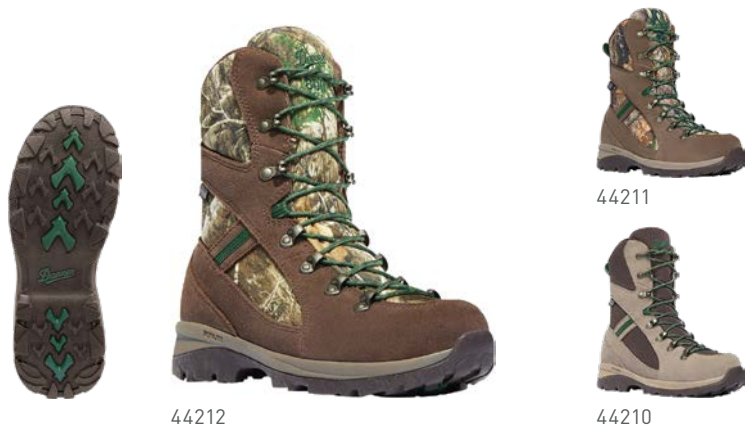
STYLE #	HEIGHT	COLOR / PATTERN	WATERPROOF	INSULATION	SAFETY	WEIGHT
51516	8"	Coyote	✓	400G	-	58 oz

SIZES

M: 5-11 [1/2 thru 10]

LAST 851

WAYFINDER



44212

44211

44210

DANNER® DRY

Thinsulate® Ultra
INSULATION



- Durable suede and nylon upper
- Danner® Dry waterproof protection
- Thinsulate™ Ultra Insulation [44211, 44212]
- Lace-to-toe design provides a more customized fit
- Open-cell, PU footbed
- Danner® Plyolite™ EVA midsole offers lasting support and rebound
- Nylon shank
- Danner® Wayfinder outsole provides traction in diverse terrain

STYLE #	HEIGHT	COLOR / PATTERN	WATERPROOF	INSULATION	WEIGHT
44210	8"	Brown	✓	-	35 oz
44211	8"	Mossy Oak® Break-Up Country™	✓	400G	38 oz
44212	8"	Realtree Edge™	✓	800G	40 oz

SIZES

M: 5-11 [½ thru 10]

LAST DT5

WAYFINDER SNAKE BOOT



44130

DANNER® DRY



- 360° snake-proof protection
- Durable suede and nylon upper
- Danner® Dry waterproof protection
- Lace-to-toe design provides a more customized fit
- Open-cell, PU footbed
- Danner® Plyolite™ EVA midsole offers lasting support and rebound
- Nylon shank
- Danner® Wayfinder outsole provides traction in diverse terrain

STYLE #	HEIGHT	COLOR / PATTERN	WATERPROOF	INSULATION	WEIGHT
44130	15"	Mossy Oak® Break-Up Country™	✓	-	53 oz

SIZES

M: 5-11 [½ thru 10]

LAST DT5

HIGH GROUND



46248

46230, 46241



- Oiled nubuck leather upper with lightweight, foam-backed 900 denier nylon
- Abrasion-resistant leather on high-wear areas
- GORE-TEX waterproof breathable lining
- Thinsulate™ Ultra Insulation [46230, 46241]
- Lock and load lacing system: ghillies across the forefoot for secure fit and locking speed hooks for quick lacing
- Lightweight, shock-absorbing EVA midsole
- Nylon shank
- Danner® Talon outsole offers lightweight, athletic performance on rugged terrain

STYLE #	HEIGHT	COLOR / PATTERN	WATERPROOF	INSULATION	WEIGHT
46230	8"	Realtree® Xtra	✓	1000G	50 oz
46241	8"	Realtree® Xtra	✓	400G	45 oz
46248	8"	Mossy Oak® Break-Up Country™	✓	-	37 oz

SIZES

M: 5-11 [½ thru 10]

LAST DT5

SIERRA



63100



- **Made in the USA**
- Waterproof full-grain leather upper with breathable Cordura® nylon
- GORE-TEX waterproof breathable lining
- Thinsulate™ Insulation
- Danner® Airthotic® heel cradle and arch support
- Fiberglass shank
- Handcrafted, stitchdown construction for strength and stability
- Vibram® 1276 Sierra outsole for traction in diverse terrain
- Recraftable

STYLE #	HEIGHT	COLOR / PATTERN	WATERPROOF	INSULATION	WEIGHT
63100	8"	Brown	✓	200G	64 oz

SIZES

M: 5-10 [½ thru 10]

LAST 650

A landscape photograph featuring a prominent mountain peak in the background, partially covered in snow and illuminated by warm, golden light. The foreground is dominated by a dense forest of tall, thin, dead trees, their trunks standing vertically. The sky is a clear, pale blue. The word "ACCESSORIES" is overlaid in large, white, bold, sans-serif capital letters across the middle of the image.

ACCESSORIES

26L DAYPACK

Built for the Modern Explorer

Inspired by one of our best-selling boots, the 26L Daypack was designed with the same “go anywhere” versatility and comfort you’ve come to expect from Danner. A durable nylon construction with leather reinforcement keeps your valuables protected inside so you can venture outside. Multiple pockets and an offset laptop sleeve allow for organization of the modern essentials while external accessory attachment loops cut from the same webbing used on our Mountain 600 boots enable you to secure additional gear. Whether daily commuting or exploring the unknown, the 26L Daypack has your back.



NEW 26L DAYPACK



95820

- Durable nylon construction with leather reinforcement
- Offset laptop sleeve for protection
- Ergonomic shoulder straps with memory foam
- Adjustable sternum straps
- External front pocket
- Top hood zipper pocket
- Dual side pockets
- Draw cord closure system
- External accessory attachment loops
- Multiple zipper entry to main compartment

STYLE #	COLOR	DIMENSIONS
95820	Black/Monk's Robe	12.25" x 17" x 6.25"

NEW TOOL BAG



90601



- **Made in USA**
- Heavy duty 16 oz cotton duck canvas construction
- Lightweight, durable aluminum frame
- Heavyweight vegetable-tan leather handle and bottom
- Metal studs on bottom for wear protection
- Covered fiber board bottom
- Internal pocket

STYLE #	COLOR	DIMENSIONS
90601	Natural Canvas	16" x 12" x 6"

NEW TOOL BELT



90602



- **Made in USA**
- Thick suede and natural leather construction for lasting durability
- 2 large pockets and 3 small tool pockets
- Full-grain leather hammer loop and tape holder
- 2 1/4" web belt fits 29" – 46" waists

STYLE #	COLOR	DIMENSIONS	MAX BELT LENGTH
90602	Brown	9.5" x 9 .75" x 1"	50"



NEW BI-FOLD WALLET



90605



- **Made in USA**
- Premium Horween leather
- Slim bi-fold design
- 4 card slots
- 1 bill pocket

STYLE #	COLOR	DIMENSIONS
90605	Latigo	4.5" x 3.5"

NEW TRUCKER WALLET



90606



- **Made in USA**
- Premium Horween leather
- Metal attachment eyelet for chains
- 4 card slots
- 2 bill pockets

STYLE #	COLOR	DIMENSIONS
90606	Latigo	7.5" x 4"

NEW STICKERS



90609



90610

- For wherever you slap it

STYLE #	SIZE
90609	3" x 3"
90610	1.5" x 1.5"

NEW ENAMEL PINS



90611



90612



90613

- Enamel coated metal pins

STYLE #	SIZE
90611	1" Diameter
90612	1" Diameter
90613	1" Diameter



MERINO MID/LIGHTWEIGHT SOCKS



75002, 75003, 75008, 75010, 75012



- **Made in USA with imported fibers**
- Seam-free toe reduces bunching and blisters
- Targeted cushion and venting zones
- Arch support helps reduce fatigue
- Itch-free comfort
- Naturally breathable
- Midweight [75002, 75003, 75010, 75012] and lightweight [75008]

SIZE S-XL [75008, 75012]; M-XL [75002, 75003, 75010]

STYLE #	HEIGHT	COLOR	USE
75002	Crew	Brown Heather	Hunt
75003	Over-Calf	Green	Hunt
75008	Crew	Gray	Hike
75010	Crew	Brown	Work
75012	Crew	Black	Uniform

MATERIALS

75002	72% Merino Wool,* 26% Nylon, 2% LYCRA® Spandex
75003	75% Merino Wool,* 23% Nylon, 2% LYCRA® Spandex
75008	65% Merino Wool,* 32% Nylon, 3% LYCRA® Spandex
75010	82% Merino Wool,* 17% Nylon, 1% LYCRA® Spandex
75012	80% Merino Wool,* 19% Nylon, 1% LYCRA® Spandex

* Non-mulesed wool

MERINO MID/LIGHTWEIGHT SOCKS



75007, 75014



- **Made in USA with imported fibers**
- Seam-free toe reduces bunching and blisters
- Targeted cushion and venting zones
- Arch support helps reduce fatigue
- Itch-free comfort
- Naturally breathable

SIZE S-XL

STYLE #	HEIGHT	COLOR	USE
75007	1/4 Crew	Gray	Hike
75014	3/4 Crew	Charcoal/Green	Hike

MATERIALS

75007	75% Merino Wool,* 23% Nylon, 2% LYCRA® Spandex
75014	70% Merino Wool,* 28% Nylon, 2% LYCRA® Spandex

* Non-mulesed wool

DRIRELEASE LIGHTWEIGHT SOCKS



75009, 75011



- **Made in USA with imported fibers**
- Drirelease® pulls moisture away from the skin for superior comfort and performance
- Seam-free toe reduces bunching and blisters
- Targeted cushion and venting zones
- Arch support helps reduce fatigue
- Quick-drying comfort
- Washed with FreshGuard® to help eliminate odors

SIZE S-XL [75011]; M-XL [75009]

STYLE #	HEIGHT	COLOR	USE
75009	Crew	Gray	Work
75011	Crew	Black	Uniform

MATERIALS

75009	59% Polyester, 31% Nylon, 8% Merino Wool,* 2% LYCRA® Spandex
75011	61% Polyester, 28% Nylon, 8% Merino Wool,* 3% LYCRA® Spandex

* Non-mulesed wool

DRIRELEASE LIGHTWEIGHT SOCKS



75000, 75001, 75005, 75006



- **Made in USA with imported fibers**
- Drirelease® pulls moisture away from the skin for superior comfort and performance
- Seam-free toe reduces bunching and blisters
- Targeted cushion and venting zones
- Arch support helps reduce fatigue
- Quick-drying comfort
- Washed with FreshGuard® to help eliminate odors

SIZE S-XL [75005, 75006]; M-XL [75000, 75001]

STYLE #	HEIGHT	COLOR	USE
75000	Crew	Green	Hunt
75001	Over-Calf	Brown	Hunt
75005	1/4 Crew	Gray	Hike
75006	Crew	Gray	Hike

MATERIALS

75000	58% Polyester, 32% Nylon, 8% Merino Wool,* 2% LYCRA® Spandex
75001	58% Polyester, 31% Nylon, 8% Merino Wool,* 3% LYCRA® Spandex
75005	58% Polyester, 32% Nylon, 8% Merino Wool,* 2% LYCRA® Spandex
75006	57% Polyester, 32% Nylon, 8% Merino Wool,* 3% LYCRA® Spandex

* Non-mulesed wool

TFX® HOT WEATHER DRYMAX®



H50201, H50203, H50211, H50212



- **Made in USA**
- Drymax® wicks away moisture to keep feet up to 25 times drier than polyester, acrylic, nylon or wool
- Microzap silver in Drymax® is antimicrobial for odor control

SIZE S-XL

STYLE #	HEIGHT	COLOR	WEIGHT
H50201	Over-Calf	Foliage Green	Lightweight
H50203	Over-Calf	Coyote Brown	Lightweight
H50211	Over-Calf	Black	Lightweight
H50212	Crew	Black	Lightweight

MATERIALS

Polyester 52%, Drymax® Olefin 27%, Elastane 12%, Nylon 9%

MERINO HEAVYWEIGHT SOCKS



75004



- **Made in USA with imported fibers**
- Seam-free toe reduces bunching and blisters
- Targeted cushion and venting zones
- Arch support helps reduce fatigue
- Itch-free comfort
- Naturally breathable

SIZE S-XL

STYLE #	HEIGHT	COLOR	USE
75004	Over-Calf	Gray	Hunt

MATERIALS

79% Merino Wool,* 20% Nylon, 1% LYCRA® Spandex

* Non-mulesed wool

FATIGUE FIGHTER FOOTBED



95908, 95909, 95910, 95911, 95912

- Molded thermoplastic polyurethane cup for arch support
- Polyurethane air cushioning
- Quick-dry microfiber top cloth

STYLE #	SIZE	FIT SIZE
95908	XS	Men's 4-6; Women's 6-8
95909	S	Men's 6.5-8.5; Women's 8.5-10.5
95910	M	Men's 9-10.5; Women's 11
95911	L	Men's 11-12.5
95912	XL	Men's 13-15

DXT® COMFORT FOOTBED



95914

- Incorporates a dual-density shock-absorption system
- Tri-density system in the heel to reduce knee stress
- Molded thermoplastic polyurethane cup for added arch support
- Quick-dry microfiber top cloth

STYLE #	SIZES
95914	D: 6-14, full sizes only

DCS® FOOTBED



95916

// DCS

- Patented Danner® Comfort System footbed replacement*
- Air vents for increased breathability
- Extra heel impact zone for increased shock absorption
- Molded thermoplastic polyurethane cup for added arch support
- Quick-dry mesh cover for top cloth

STYLE #	SIZES
95916	D: 6-14 (1/2 thru 12)

* Works only with DCS® footwear

FOAM AIRTHOTIC®



96706

Ortholite®

- Cushioning open-cell Ortholite®
- Lightweight, machine washable and antimicrobial

STYLE #	SIZE	FIT SIZE*
96706	XS	Men's 4-5.5; Women's 4-6.5
	S	Men's 6-7.5; Women's 7-9.5
	M	Men's 8-9.5; Women's 10-11
	L	Men's 10-11.5
	XL	Men's 12-15

* Sizing equivalents. Sizes are unisex.

POLYURETHANE AIRTHOTIC®



96702, 96703, 96704



- **Made in USA**
- Molded thermoplastic polyurethane cup for arch support and heel alignment
- American Podiatric Medical Association accepted

STYLE #	SIZE	FIT SIZE
96702	M	Men's 8-9.5; Women's 10-11
96703	L	Men's 10-11.5
96704	XL	Men's 12-15

LACE-IN BOOT ZIPPER



79301



79300



- **Made in USA**
- Laces into your boots for quick entry and exit and consistent fit

STYLE #	SIZE
79300	8"
79301	6"

LACES



STYLE #	COLOR	EYES/LENGTH	USE
70016	Brown/Multi	18/63"	Universal
70017	Brown/Multi	14/54"	Universal
70032	Brown/Green/Blue	14/54"	Universal
70035	Orange	18/63"	Universal
70037	Gold	18/63"	Universal
70041	Red	18/63"	Universal
70045	Green	18/63"	Universal
70047	Blue	18/63"	Universal
70049	Royal Blue	18/63"	Universal
70052	Flat Red	18/63"	Universal

LACES HUNT - WORK - UNIFORM



STYLE #	COLOR	EYES/LENGTH	USE
70011	Black/Tan	26/84"	Hunt
70012	Coyote	26/86"	Uniform
70019	Gold/Tan	26/84"	Work
70020	Black	14/54"	Uniform
70021	Black	18/63"	Uniform
70024	Mojave Olive	20/72"	Uniform
70025	Gold/Tan	14/54"	Work
70026	Gold/Tan	18/63"	Work
70027	Gold/Tan	20/72"	Work
70028	Black	20/72"	Uniform
70029	Black	26/84"	Uniform
70030	Black/Tan	18/63"	Hunt
70031	Black/Tan	20/72"	Hunt

LACES LEATHER



STYLE #	COLOR	LENGTH	USE
70102	Brown	63"	Outdoor
70104	Burgundy	63"	Outdoor

DANNER® BOOT CARE SYSTEM



97002 97003 97004 97005

- Danner® Waterproofing Gel cleans without leaving residues that can spoil waterproofing
- Danner® Waterproofing Spray blocks water from the outside while letting moisture escape from the inside, making it a great choice for suede or nubuck leather
- Danner® Leather Conditioner softens, revives and waterproofs full-grain leather, preventing it from cracking and aging prematurely
- Danner® Leather Cleaner is formulated to the proper pH for leather, prolonging the life of leather goods

STYLE #	PRODUCT	VOLUME
97002	Waterproofing Gel	4oz
97003	Waterproofing Spray	4oz
97004	Leather Conditioner by Lexol	8oz
97005	Leather Cleaner by Lexol	8oz

BOOT DRESSING (1.7 OZ)



97111 97112 97113

- Prevents drying and cracking
- Prevents scuffs and scratches
- May be used on all leather items, except nubuck or suede
- Sold in sets of 12

STYLE #	LEATHER COLOR	VOLUME
97111	Black	1.7oz
97112	Brown	1.7oz
97113	Clear	1.7oz

BOOT DRESSING (4 OZ)



97401 97501 97503

- Prevents drying and cracking
- Prevents scuffs and scratches
- May be used on all leather items, except nubuck or suede
- Sold in sets of 12

STYLE #	LEATHER COLOR	VOLUME
97401	Brown	4oz
97501	Black	4oz
97503	Clear	4oz



DANNER.COM

DANNER, INC.
17634 NE AIRPORT WAY
PORTLAND, OR 97230-4975

P: 800 345 0430
P: 503 251 1100
F: 503 251 1119
DANNER.COM



DANNER, INC.
NO. A3026
ISO 9001 CERTIFIED

AAFES QUALITY CERTIFICATION

Danner is the first and only footwear manufacturer to earn the Quality Assurance Supplier Certification from the Army & Air Force Exchange Service.

Danner®, Acadia®, Danner Bob®, TFX®, Airthotic®, Pronghorn® and TERRA FORCE® are registered trademarks of LaCrosse Footwear, Inc. TERRA FORCE® X (TFX), the TF logo and Striker® are trademarks of Danner, Inc. GORE-TEX®, GORE-TEX® XCR, GTX®, CROSSTECH®, Guaranteed to Keep You Dry and the Diamond logo are registered trademarks of W.L. Gore and Associates, Inc. Cordura® is a registered trademark of DuPont. Thinsulate™ is a trademark of 3M. Vibram® is a registered trademark of Vibram® S.P.A. of Italy.