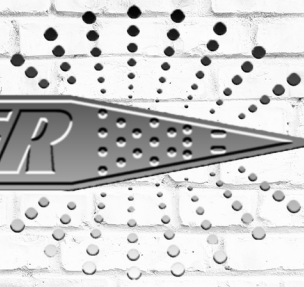


# FLAMEFIGHTER





## About Us:

Flamefighter Corporation was established in 1987 with the introduction of an innovative product called the “FlameFighter” to be used in the fire service. This tool was invented by a Fire Chief from a small town in southern Minnesota to keep fire fighters safe when extinguishing fires in concealed spaces such as walls, attics, vents, voids and much more.

Starting with the success of this one product, we have grown into a company with over 100 useful products, divided into 11 product groups and over 170 variations. We distribute our products through a network of over 300 fire equipment dealers worldwide, as well as being an OEM supplier to approximately 65 New Fire Apparatus Builders.

We pride ourselves on high quality workmanship and top quality service to our customers. We are constantly searching for ways in which we can provide our customers with new and better products to help them accomplish their jobs more safely and effectively.

### Things you might not know:

We pride ourselves on manufacturing quality U.S.A. made products.

Plus, we source unique high quality products world wide.

We have been a family owned business since 1987 based out of Minnesota.

We offer an industry leading lifetime warranty on **all** products.

We speak Spanish; Hablamos Español.

# Table of Contents

- Page 1: **Hose Equipment**; Hose Testers & Pressure Washers
- Page 2: **Hose Equipment**; Hose Washers
- Page 3: **Hand Tools**; Pike Poles, Drywall Hooks & Trash Hooks
- Page 4: **Hand Tools**; Pole Parts
- Page 5: **Hand Tools**; New York Roof Hook Parts
- Page 6: **Hand Tools**; Pike Pole Tools; Roof Kit, Salvage Bag, Salvage Kit & Build-A-Pole
- Page 7: **Hand Tools**; Shovels & Wildland Tools
- Page 8: **Hand Tools**; Axes & Forcible Entry Tool
- Page 9: **Hand Tools**; Bolt Cutters & Wrenches
- Page 10: **Hand Tools**; Pry Bars, Sledge Hammers, Mallets & Storage Bags
- Page 11: **SCBA**; Brackets & Straps
- Page 12: **SCBA**; Cabinets & Equipment Storage
- Page 13: **SCBA**; Seating & Accessories
- Page 14: **NFPA**; Seating Conversion Kits & Rearview Cameras
- Page 15: **Piercing Nozzles**; Models 1000 & 2500
- Page 16: **Piercing Nozzles**; 900 Series
- Page 17: **Piercing Nozzles**; Augustus Tool & UniKart
- Page 18: **Cabinets**; Fire Extinguisher & Hose Cabinets
- Page 19: **Cabinets**; Fire Extinguisher Cabinets & Stands
- Page 20: **Fire Accessories**; Fire Karts



# Hose Equipment

## Gas & Electric Hose Tester & Pressure Washer Option



HT50- FRONT



HT50- BACK



HTG50- FRONT



HTG50- BACK

A built-in pressure washer is optional and includes 50 ft. of 3/8" non-marking hose, quick release heavy duty wand & handle, and a stainless steel nozzle with stream straightener

### FEATURES:

- Complies with NFPA standards
- 1-1/2" or 2-1/2" Adapters
- Built-in tool tray
- Stainless steel ball valves
- 3 gallons a minute @ 600 PSI
- Capable of testing up to 6" diameter hose
- Capable of testing up to 300ft per discharge
- Fits standard 36" door way
- Made in U.S.A.

### Bleeder Caps:

HTAD5C.....5" Storz Bleeder Cap  
 HTBC15NPSH....1.5" NPSH Bleeder Cap  
 HTBC15NST.....1.5" NST Bleeder Cap  
 HTBC25.....2.5" NST Bleeder Cap  
 HTBC25CSA.....2.5" CSA Bleeder Cap  
 HTBC25NPSH.....2.5" Bleeder Cap  
 Other sizes & combos available

### Adapters:

15NH.....1.5 NH x 1.5 NPT DBL Male  
 15NPSH....1.5 NPSH x 1.5 NPT DBL Male  
 25CSA....2.5 CSA x 1.5 NPT DBL Male  
 25NH..2.5 NH x 1.5 NPT DBL Male  
 25NPSH....2.5 NPSH x 1.5 NPT DBL Male  
 Other sizes & combos available

### Engine Specs:

Commercial Grade Motors  
& Pumps  
 Electric: 1.5 HP  
 Gas: 163 CC  
 Gas models come with  
 Honda Engines

### Hose Testers Without Pressure Washer (4 Outlet)

HT50.....Hose Tester, 1-1/2" adaptors, NST Thread  
 HT5025.....Hose Tester, 2-1/2" adaptors, NST Thread  
 HT5025CSA.....Hose Tester, 2-1/2" adaptors, CSA Thread  
 HT50NPSH.....Hose Tester, 1-1/2" adaptors, NPSH Thread  
 HT5025NPSH.....Hose Tester, 2-1/2" adaptors, NPSH Thread

### Hose Tester Without Pressure Washer (6 Outlet)

HT56.....Hose Tester, 1-1/2" adaptors, NST Thread  
 HT5625.....Hose Tester, 2-1/2" adaptors, NST Thread  
 HT5625CSA.....Hose Tester, 2-1/2" adaptors, CSA Thread  
 HT56NPSH.....Hose Tester, 1-1/2" adaptors, NPSH Thread  
 HT5625NPSH.....Hose Tester, 2-1/2" adaptors, NPSH Thread

### Hose Testers With Pressure Washer (4 Outlet)

HT100.....Hose Tester, 1-1/2" adaptors, NST Thread  
 HT10025.....Hose Tester, 2-1/2" adaptors, NST Thread  
 HT10025CSA.....Hose Tester, 2-1/2" adaptors, CSA Thread  
 HT100NPSH.....Hose Tester, 1-1/2" adaptors, NPSH Thread  
 HT10025NPSH.....Hose Tester, 2-1/2" adaptors, NPSH Thread

### Hose Testers With Pressure Washer (6 Outlet)

HT156.....Hose Tester, 1-1/2" adaptors, NST Thread  
 HT15625.....Hose Tester, 2-1/2" adaptors, NST Thread  
 HT15625CSA.....Hose Tester, 2-1/2" adaptors, CSA Thread  
 HT156NPSH.....Hose Tester, 1-1/2" adaptors, NPSH Thread  
 HT15625NPSH.....Hose Tester, 2-1/2" adaptors, NPSH Thread

### **Other Threads Available Upon Request**

**Gas Hose Tester part numbers: add a "G".**

**Example: HTG50**



# Hose Equipment



## Hose Washers

Very effective in cleaning all types of dirty and caked hoses. Simply connect to a fire hydrant or pumper with recommended operating PSI of 40 to 60.



**39700**

- Washes up to 3" hose
- Lightweight aluminum housing 30-60 GPM
- 1-1/2 NST connecting standard



**39800**

- Washes up to 5" hose
- Lightweight aluminum housing 30-60 GPM
- 2-1/2 NST connecting standard

Other threads available by request

A department favorite since 1987



## Hand Tools

### Pike Poles



PP02, PP03, PP04, PP06, PP08, PP10, PP12, PP14

With D-Handle

PP02D, PP03D, PP04D, PP06D, PP08D, PP10D, PP12D, PP14D

All pike poles have a round fiberglass handle with a plastic core for added stability, maximum strength, and minimum weight. The outside diameter of the handle is 1-1/4". Made in the U.S.A.

- Wooden handle available in 6ft, 8ft & 10ft only

**Our heavy duty poles feature handles and heads that are bonded and pined.**

Our poles are produced from thousands of continuous fiberglass stands, saturated with thermosetting resin and a center plastic core for added stability. A non-fiberglass polyester veil is impregnated on the surface giving the pole a smooth finish and keeps the fiberglass from splintering.

Made in the U.S.A.

**All poles available 2', 3', 4', 8', 10', 12', or 14' lengths**

**Custom lengths**

**Available!**

### Drywall Hooks



DWH02, DWH03, DWH04, DWH06, HWD08, DWH10, DWH12, DWH14

With D-Handle

DWH02D, DWH03D, DWH04D, DWH06D, DWH08D, DWH10D, DWH12D, DWH14D

The head of our drywall hook is fabricated from 3/16" steel plate and then welded into a solid structure. The use of fabricated parts results in a stronger and lighter head .

This tool is fantastic for tearing apart walls to find hidden fire pockets. The blade on the back of the head is sharpened on each end and is designed to quickly pierce drywall or plaster. The head is then turned around so the operator can dig into the wall with the aggressive teeth and rip large pieces of material away as needed. Made in the U.S.A.

### Trash Hooks



TH02, TH03, TH04, TH06, HT08, TH10, TH12, TH14

With D-Handle

TH02D, TH03D, TH04D, TH06D, TH08D, TH10D, TH12D, TH14D

The trash hook has the same great features of our standard pike pole. The trash hook head is available in two sizes. Made in the U.S.A.

Standard size: 1/2 inch tine

Heavy Duty size "LA" : 5/8 inch

Heavy Duty part numbers: **THLA02, THLA03, THLA04, THLA08, THLA10, THLA12, THLA14**. Also comes in D-Handle option.



# Hand Tools

## Pole Parts

For 1.25" OD Poles



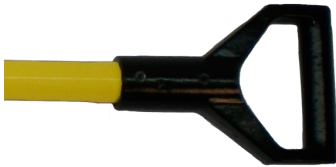
**DHLARGE-D Handle**



**THH- Trash Hook Head**



**MH- Muster Hook**



**DHSMALL-D Handle**



**PIKEHEAD- Pike Head**



**DWH- Dry Wall Hook**



Fiberglass Pole only sold per foot



**FLH- New York Roof Hook**



**VEC- Vinyl End Cap**



**FLPB- Pry Bar tip**



**930HT- Mounting Hardware**



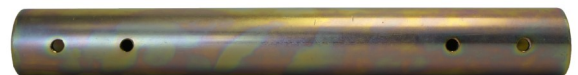
**FFRH- Fire Rake/ Flapper Head  
(not shown)**



**BP1- Female Tube End**



**BP2- Male Tube End**



**PPSLEEVE- Pike Pole Extension Sleeve**



# New York Roof Hooks



FLH— New York Roof Hook

## Replacement Parts

- FLCR.....Boston Hook for 1' OD Pole
- FLDH.....FL Series D Handle for 1' OD Pole
- FLGSF.....FL Series Gas Shut Off for 1' OD Pole
- FLH.....FL Series Roof Hook for 1' OD Pole
- FLHH.....FL Series Hammer Head for 1' OD Pole
- FLPB.....FL Series Pry Bar Tip for 1' OD Pole
- FLSLEEVE.....FL Sleeve for 1" OD Pole
- SSP.....FL Series Steel Shaft for 1" Od Steel Pole
- YFP100.....Fiberglass Pole Yellow 1" OD Pole FL Series



FLHH



FLGSF

**Steel & Fiberglass  
Pole/Shfts  
Available**

## With Pry Bar Tip

- FLHPB02.....2' FL Series NY Roof Hook with Pry Bar Tip Fiberglass Pole
- FLHPB02S.....2' FL Series NY Roof Hook with Pry Bar Tip Steel Shaft
- FLHPB03.....3' FL Series NY Roof Hook with Pry Bar Tip Fiberglass Pole
- FLHPB03S.....3' FL Series NY Roof Hook with Pry Bar Tip Steel Shaft
- FLHPB04.....4' FL Series NY Roof Hook with Pry Bar Tip Fiberglass Pole
- FLHPB04S.....4' FL Series NY Roof Hook with Pry Bar Tip Steel Shaft
- FLHPB05.....5' FL Series NY Roof Hook with Pry Bar Tip Fiberglass Pole
- FLHPB05S.....5' FL Series NY Roof Hook with Pry Bar Tip Steel Shaft
- FLHPB06.....6' FL Series NY Roof Hook with Pry Bar Tip Fiberglass Pole
- FLHPB06S.....6' FL Series NY Roof Hook with Pry Bar Tip Steel Shaft
- FLHPB08.....8' FL Series NY Roof Hook with Pry Bar Tip Fiberglass Pole
- FLHPB08S.....8' FL Series NY Roof Hook with Pry Bar Tip Steel Shaft
- FLHPB10.....10' FL Series NY Roof Hook with Pry Bar Tip Fiberglass Pole
- FLHPB10S.....10' FL Series NY Roof Hook with Pry Bar Tip Steel Shaft
- FLHPB12.....12' FL Series NY Roof Hook with Pry Bar Tip Fiberglass Pole
- FLHPB12S.....12' FL Series NY Roof Hook with Pry Bar Tip Steel Shaft
- FLHPB14.....14' FL Series NY Roof Hook with Pry Bar Tip Fiberglass Pole
- FLHPB14S.....14' FL Series NY Roof Hook with Pry Bar Tip Steel Shaft

## With Hammer Head

- FLHHH02.....2' FL Series NY Roof Hook with Hammer Head Fiberglass Pole
- FLHHH02S.....2' FL Series NY Roof Hook with Hammer Head Steel Shaft
- FLHHH03.....3' FL Series NY Roof Hook with Hammer Head Fiberglass Pole
- FLHHH03S.....3' FL Series NY Roof Hook with Hammer Head Steel Shaft
- FLHHH04.....4' FL Series NY Roof Hook with Hammer Head Fiberglass Pole
- FLHHH04S.....4' FL Series NY Roof Hook with Hammer Head Steel Shaft
- FLHHH05.....5' FL Series NY Roof Hook with Hammer Head Fiberglass Pole
- FLHHH05S.....5' FL Series NY Roof Hook with Hammer Head Steel Shaft
- FLHHH06.....6' FL Series NY Roof Hook with Hammer Head Fiberglass Pole
- FLHHH06S.....6' FL Series NY Roof Hook with Hammer Head Steel Shaft
- FLHHH08.....8' FL Series NY Roof Hook with Hammer Head Fiberglass Pole
- FLHHH08S.....8' FL Series NY Roof Hook with Hammer Head Steel Shaft
- FLHHH10.....10' FL Series NY Roof Hook with Hammer Head Fiberglass Pole
- FLHHH10S.....10' FL Series NY Roof Hook with Hammer Head Steel Shaft
- FLHHH12.....12' FL Series NY Roof Hook with Hammer Head Fiberglass Pole
- FLHHH12S.....12' FL Series NY Roof Hook with Hammer Head Steel Shaft
- FLHHH14.....14' FL Series NY Roof Hook with Hammer Head Fiberglass Pole
- FLHHH14S.....14' FL Series NY Roof Hook with Hammer Head Steel Shaft

## With Gas Shut Off

- FLH02.....2' FL Series NY Roof Hook with Gas Shut Off Fiberglass Pole
- FLH02S.....2' FL Series NY Roof Hook with Gas Shut Off Steel Shaft
- FLH03.....3' FL Series NY Roof Hook with Gas Shut Off Fiberglass Pole
- FLH03S.....3' FL Series NY Roof Hook with Gas Shut Off Steel Shaft
- FLH04.....4' FL Series NY Roof Hook with Gas Shut Off Fiberglass Pole
- FLH04S.....4' FL Series NY Roof Hook with Gas Shut Off Steel Shaft
- FLH05.....5' FL Series NY Roof Hook with Gas Shut Off Fiberglass Pole
- FLH05S.....5' FL Series NY Roof Hook with Gas Shut Off Steel Shaft
- FLH06.....6' FL Series NY Roof Hook with Gas Shut Off Fiberglass Pole
- FLH06S.....6' FL Series NY Roof Hook with Gas Shut Off Steel Shaft
- FLH08.....8' FL Series NY Roof Hook with Gas Shut Off Fiberglass Pole
- FLH08S.....8' FL Series NY Roof Hook with Gas Shut Off Steel Shaft
- FLH10.....10' FL Series NY Roof Hook with Gas Shut Off Fiberglass Pole
- FLH10S.....10' FL Series NY Roof Hook with Gas Shut Off Steel Shaft
- FLH12.....12' FL Series NY Roof Hook with Gas Shut Off Fiberglass Pole
- FLH12S.....12' FL Series NY Roof Hook with Gas Shut Off Steel Shaft
- FLH14.....14' FL Series NY Roof Hook with Gas Shut Off Fiberglass Pole
- FLH14S.....14' FL Series NY Roof Hook with Gas Shut Off Steel Shaft

## With "D" Handle

- FLHDH02.....2' FL Series NY Roof Hook with "D" Handle Fiberglass Pole
- FLHDH02S.....2' FL Series NY Roof Hook with "D" Handle Tip Steel Shaft
- FLHDH03.....3' FL Series NY Roof Hook with "D" Handle Fiberglass Pole
- FLHDH03S.....3' FL Series NY Roof Hook with "D" Handle Steel Shaft
- FLHDH04.....4' FL Series NY Roof Hook with "D" Handle Fiberglass Pole
- FLHDH04S.....4' FL Series NY Roof Hook with "D" Handle Steel Shaft
- FLHDH05.....5' FL Series NY Roof Hook with "D" Handle Fiberglass Pole
- FLHDH05S.....5' FL Series NY Roof Hook with "D" Handle Steel Shaft
- FLHDH06.....6' FL Series NY Roof Hook with "D" Handle Fiberglass Pole
- FLHDH06S.....6' FL Series NY Roof Hook with "D" Handle Steel Shaft
- FLHDH08.....8' FL Series NY Roof Hook with "D" Handle Fiberglass Pole
- FLHDH08S.....8' FL Series NY Roof Hook with "D" Handle Steel Shaft
- FLHDH10.....10' FL Series NY Roof Hook with "D" Handle Fiberglass Pole
- FLHDH10S.....10' FL Series NY Roof Hook with "D" Handle Steel Shaft
- FLHDH12.....12' FL Series NY Roof Hook with "D" Handle Fiberglass Pole
- FLHDH12S.....12' FL Series NY Roof Hook with "D" Handle Steel Shaft
- FLHDH14.....14' FL Series NY Roof Hook with "D" Handle Fiberglass Pole
- FLHDH14S.....14' FL Series NY Roof Hook with "D" Handle Steel Shaft





# Pike Pole Kits

All poles have a round fiberglass handle with a plastic core for added stability, maximum strength and minimum weight. The outside diameter of the handle is 1-1/4".

## Roof Kit



BP ROOF KIT

## Salvage Bag



BPS Salvage Bag  
BPVB Roof Bag

## Salvage Kit



BP SALVAGE KIT

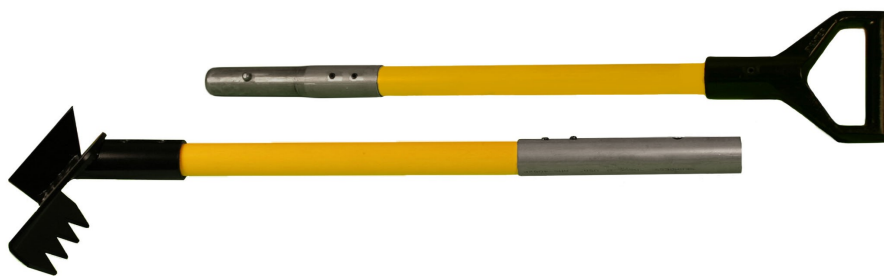
BP Roof Kit Includes

- 1-3' Pike Head
- 1-3' Trash Hook
- 1-3' D-Handle
- 1-4' Ext Pole

BP Salvage Kit Includes

- 1-3' Dry Wall Hook
- 1- Squeegee
- 1- Square Nose Shovel
- 2-4' Ext Handles with Rubber Grip
- 1-4' Ext Pole

## Build-A-Pole



- BP3PH 3' Pike Head
- BP3TH 3' Trash Hook
- BP3DWH 3' Dry Wall Hook
- BP3D3 3' D-Handle
- BP3EXT 3' Pole Extension
- BP3BH Broom Head
- BP4EXT 4' Extension Pole

- BPSH Square Head Shovel
- BPSQ Squeegee Head
- BPSS Scoop Shovel Head
- BP3RK 3' ext with gas shut off
- BPD 6" D-Handle
- BP3RG Handle Rubber Grip
- BP3EXTD 4' D-Handle



# Hand Tools

## Shovels

All poles are produced of continuous fiberglass strands, saturated with thermosetting resins and a center plastic core for added stability. A non-fiberglass polyester veil is impregnated on the surface giving the pole a smooth finish and keeps the fiberglass from splintering.



**RPS-48**  
(length 48")  
**RPS-27D**  
(length 27",  
D-Handle)



**SQP-48**  
(length 48")  
**SQP-27D**  
(length 27"  
D-Handle)



**LSS-44**  
(length 44")



**NONSS38**



**LSS-27D**  
(length 27")  
D-Handle

**NONSS38-**  
Non-Sparking Plastic Haz-  
Mat Shovel are non-  
absorbent, ribbed blade  
shovels, made of non-  
sparking Cyclocac plastic.

## Wildland Tools



**FB**- Broom



**FSW**- Forestry Shovel



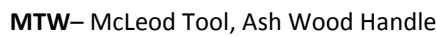
**FR**- Fire Rake, Fiberglass Handle



**FRW**- McLeod Tool, Ash Wood Handle



**MT**- McLeod Tool, Fiberglass Handle



**MTW**- McLeod Tool, Ash Wood Handle



**FF**- Fire Flapper, Fiberglass Handle



**PUL**- Pulaski Fire Axe with Fiberglass Handle



**PULW**- Pulaski Fire Axe, Ash Wood Handle

**FFW**- Fire Flapper, Ash Wood Handle



# Hand Tools

## Axes



PHAFR6LB (shown) 6lb Pickhead Axe with Fiberglass & Rubber Handle



FHAFR6LB (shown) 6lb Flathead Axe with Fiberglass & Rubber Handle



PHAF6LB (shown) 6lb Pickhead Axe with Fiberglass Handle  
FHAF6LB 6lb Flathead Axe with Fiberglass Handle



PHAH6LB (shown) 6lb Pickhead Axe with Hickory Handle  
FHAH6LB 6lb Flathead Axe with Hickory Handle

### 6lb Axes Pick Head

PHAF6LB	Pickhead	Fiberglass Handle 36"
PHAFR6LB	Pickhead	Fiberglass/Rubber Handle 36"
PHAH6LB	Pickhead	Hickory Handle 36"

### 6lb Axes Flat Head

FHAF6LB	Flathead	Fiberglass Handle 36"
FHAFR6LB	Flathead	Fiberglass & Rubber Handle 36"
FHAH6LB	Flathead	Hickory Handle 36"

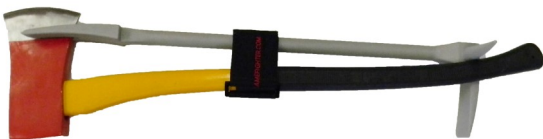
### Replacement Axe Handles

FGAHRG	Fiberglass Yellow with Rubber Grip 36" Length
WAH	Wooden

Handles made in Taiwan. Assembled in U.S.A.

## Forcible Entry Tool

Get into buildings or other areas of confinement when normal means of entry are locked or blocked and when accessing doorways "through the lock" or "around the lock" depending on the techniques used.



FEIS- Forcible Entry Set (FE30, FHAFR6LB, Axe Strap)



AXS- Axe Strap



FE24- 24" Forcible Entry Tool  
FE30- 30" Forcible Entry Tool  
FE36- 36" Forcible Entry Tool

Made in Taiwan. Assembled in U.S.A.

# Hand Tools

## Bolt & Cable Cutters



CC24- Cable Cutters (Available in 24" length)



Bolt Cutters (Available in 14" 18", 24", 36", 42" lengths)  
BC14, BC18, BC24, BC36, BC42

## REPLACEMENT TIPS

BC14      14" Bolt Cutter  
BC14TIP    14" Replacement Tips  
BC18      18" Bolt Cutter  
BC18TIP    18" Replacement Tips  
BC24      24" Bolt Cutter  
BC24TIP    24" Replacement Tips

BC36      36" Bolt Cutter  
BC36TIP    36" Replacement Tips  
BC42      42" Bolt Cutter  
BC42TIP    42" Replacement Tips  
BC48      48" Bolt Cutter  
BC48TIP    48" Replacement Tips  
CC24      24" Cable Cutter

Made in China

## Wrenches



STW- Storz Wrench



SPW- Spanner Wrench



HYD01- Hydrant Wrench



HYD02- Hydrant Wrench

# Hand Tools

## Pry Bars, Sledge Hammers & Mallets



Wrecking & Crow Bars (Available in 14", 24", 36" or 48")  
WB14, WB24, WB36, WB48



Pinch Bars Heavy Duty (Available in 14", 24", 51", or 60")  
PB24, PB36, PB51, PB60



RM- 32 oz. Rubber Mallet, Hickory  
RMF- 32 oz. Rubber Mallet, Fiberglass



Sledge Hammer (Available in 8lb, 10lb, 12lbs, 16lbs or 20lbs)  
SH08, SH10, SH12, SH16, SH20



Dead Blow Hammer (Available in 1lb, 2lb, 3lb, 4lb or 10lb)  
DBH01, DBH02, DBH03, DBH04, DBH10

# Storage Bags

Made of heavy-duty water resistant nylon. Main compartment has double zipper for easy packing and unpacking. Additional storage in a flat, zippered outside pocket for gloves, hood, and other small items. Made in China.

**FG15012**



-12"D x 14"H x 36"L  
-No Maltese cross

**FG15011**



-20"D x 17"H x 16"L  
-With Maltese cross  
-1-1/2" Full across web straps  
-Front pocket: 13" x 16"

**FG23015**



-16"W x 16"H x 34"L  
-Padded shoulder strap  
-250lbs Capacity  
-Maltese cross print included

**FG15017**



-26"W x 18"H x 30"L  
-1-1/2" Full across web straps  
-Maltese Cross Print Included  
-Padded handle & shoulder Strap





# SCBA Brackets & Straps



14000 Shown

## SCBA Bracket with Safety Strap NFPA Compliant Model 14000

(Shown on the left)

Flamefighter 3-Point Release

In crew areas where SCBA's are stored, keep them locked securely in place with this system. You can don the SCBA while en route and keep it safely secured. When you reach your destination, pull the lanyard from between your legs, or along side the seat and you are ready to go! The 14000 fits all brands and tank sizes.

Meets NFPA 1901-03. Made in the U.S.A.



15251 Shown

### 30 min. High Pressure

15251- SCBA Bracket 5.25"

25251- SCBA Bracket 5.25" Unassembled

### 30 min. Low Pressure, 45 min. High Pressure

16751- SCBA Bracket 6.10" to 6.75"

26751- SCBA Bracket 6.10 to 6.75" Unassembled

### 60 min. Low pressure, 60 min. High Pressure

17251- SCBA Bracket 7.25"

27251- SCBA Bracket 7.25" Unassembled

The rugged Flamefighter bracket safeguards your SCBA cylinders from scarring and damage. The highest quality nylon protective coating and thermoplastic available will outlast all other coatings. Strong resilient cylinder clips made from 1075 spring steel will hold their shape and will not damage the cylinder. We guarantee it with the industries Original SCBA Bracket Lifetime Warranty!

Our clips are coated with a base coat of high grade nylon and a second layer of high grade thermoplastic for added extra protection on the tips of the clips. Excellent for use with all cylinders including carbon fiber cylinders. Third party tested to over 50,000 cycles. All of our SCBA brackets are made in the U.S.A.



34000- Cradle Only  
for 14000



38011- Foot Plate



39015- 48" Safety Strap Kit  
NFPA Compliant



39011- Safety Strap 35"  
with Mounting Hardware



39002- Safety Strap 35"



38001- Back Plate



35251- Clip Only 5.25"  
(30 min. High pressure)

36751- Clip Only 6.10" to 6.75"  
(30 min. Low pressure, 45 min. high pressure)

37251- Clip Only 7.25"  
(60 min. low pressure, 60 min. high pressure)

# SCBA Cabinets & Equipment Storage

These are heavy-duty cabinets made of durable, rotation molded polyethylene with maximum UV protection. They are equipped with automotive style door gaskets that will keep our dirt, dust, water and chemicals for years of trouble free service. Hinges and latches are made of reliable nylon. Some models are available with alarms and/or locks. Built for many years of trouble free protection. All cabinets have yellow doors on black boxes and poly carbonate windows that block UV rays. Made in the U.K.



**JBXY70**– (1) Escape or Respirator



**JBXY85**– (1) SCBA



**JBXY90**– (2) SCBA's



**JBXY95**- (2) Escapes or Respirators

Part #	WIDTH Outside	WIDTH Inside	HEIGHT Outside	HEIGHT Inside	DEPTH Outside	DEPTH Inside
JBXY70	11.75"	10.5"	27.5"	24.5"	10"	8.25"
JBXY85	22.25"	19.63"	33.5"	30"	14.75"	11.75"
JBXY90	35.5"	33.5"	35.5"	32.25"	16.5"	13.5"
JBXY95	17.5"	14.7"	37.4"	36"	11"	7.67"



**39102** Shown

Built for rugged use and maximum protection. One size fits all SCBA's. Heavy duty 22oz. Vinyl provides protection and durability in all conditions. Made in the U.S.A.

- 29" H x 14" W x 12" D
- 39100-Red w/ Velcro
- 39101-Red w/ Zipper
- 39102-Yellow w/ Velcro
- 39103-Yellow w/ Zipper

## Mask Bags



**39160CR**– Red only



**39180CR**– Red Only

Built for rugged use and maximum protection. Constructed of heavy duty Cordura with soft interior lining. Velcro closures and large pull tabs allow for fast removal of the SCBA mask. Made in China. Custom bags available

## Bottle Carriers



**39400**/ Holds 8 ( 6.10-7.25" Bottles)  
**39401**/ Holds 8 (5.25" Bottles)

Our collapsible SCBA Bottle Carrier solves your fire ground storage needs. In expanded position, it will hold 8 spare cylinders. It will fit easily into truck compartments when collapsed flat. Made in U.S.A.

- Rugged nylon coating 1/4" dia. Wire
- Holds 8 Bottles
- Large size fits (6) 3/4" or (7) 1/4" bottles
- Small size fits (5) 1/4" bottles



## SCBA Seating & Accessories



Model **203** Shown  
Includes 14000 SCBA Bracket



Model **403-P-19**  
Oshkosh SCBA Seat  
Includes 14000 SCBA Bracket

The Flamefighter SCBA seat is built for the rugged demands of fire fighting. It has tough 46 oz. vinyl with high density foam and quality stitching throughout.

In addition, a slit in the head rest holds the shoulder straps securely in place for easy donning of the SCBA. Large lower openings give the waist belt a place to be out of the way.

### Model 203

- Meets NFPA standards
- Meets DOT standards
- Heavy duty fabric or vinyl
- Factory color matches
- Custom logo's available
- Quick ship times
- Easy to retrofit
- size 18.5" W x 24" D x 38" H
- NFPA compliant bracket included (model 14000)
- Custom color choices, Black & Gray standard
- Made in the U.S.A.

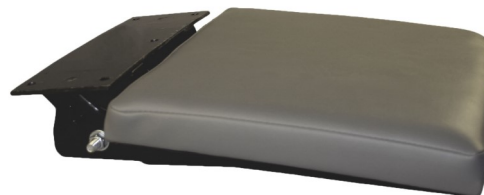


Model **303**– Drivers Seat

- 203 options
- Arm rests
  - Gray or Black
  - Other colors available
  - Custom logos



**110** Back Pad with mounting hardware



**421**– Bracket for fold up jumper seat  
160 pad shown (not included)



**350**– Back Pad Insert for  
203, 205, & 403 seat



**150**– Lower seat cushion



**155**– 15 x 18 seat pad unstyled  
**160**– 15 x 12 seat pad unstyled  
for use with 421



**453**– Swivel pedestal w/  
seat belt bar



**400**– Seat adjuster slides





## NFPA Seating Conversion Kits

The Flamefighter SCBA seat is built for the rugged demands of firefighting



- Flamefighter kits fit 4 door pickups to fit size pumpers.
- NFPA compliant SCBA brackets (installed in seats)
- Mounting bases meet all FMVSS including FMVSS no. 209.
- All mounting bases fasten to original vehicle points.
- These kits transform the rear or front seating areas into seating with SCBA seats.
- Most kits allow for up to 3 person seating or use the space in the middle for added storage.
- All kits include NFPA compliant brackets and meets MVS.

800-2	2 SCBA seats	GM 5500-7500 4 door rear
800-2-303	2 non-SCBA seat	GM 5500-7500-4 door rear
800-3	3 SCBA seats	GM 5500-7500 4 door rear
850-2	2 SCBA seats	Ford F350-650 up to 2016
850-3	3 SCBA seats	Ford F350-650 up to 2016
850-303	2-303 non SCBA seats	Ford F350-650 up to 2016

## Rearview Cameras



### Specifications

- Aspect ratio: 16:9 image
- 2 way video input. Built-in speaker
- PAL & NTSC auto-switching
- Resolution: 800 x R.G.B. x 480 dots
- Power supply: DC 12V-24V
- Sunshade design around
- Remote control, OSD menu

### Power Control

- Power
- V1/V2 change
- Positive increase
- Menu
- Negative decrease
- Mode selection

### Monitor

- Power V1/V2 change
- Negative decrease
- Mode selection
- Positive increase

Made in China



# Piercing Nozzles

## Original Flamefighter 1000

The original Flamefighter since 1987 gets you to the source of the fire quickly. In just seconds, firefighters can insert a Flamefighter nozzle into virtually any desired entry point and generate a high pressure spray.

- Up to 300 GPM
- Battery Ram style
- Replaceable tip
- Mounting hardware included
- 2400 sp. ft. water ball at 150 psi
- Made in U.S.A.



1000

## Model 2500

This unit allows you to determine the length best suited for your firefighting situation. Modular sections of 2', 3', 6' give you the lengths of your choice. Manufactured of the finest high quality steel and aircraft aluminum.

- Up to 300 GPM
- Pistol grip valve
- Replaceable nozzle tip
- Mounting hardware included
- 2400 sq. ft. water ball at 150 psi
- Made in U.S.A.



2500

(Includes items 2000,2003,3001 & 5000)



3002- 1.5 shut off valve



3001- 1.5 shut off valve w/ grip used with #2500



2000 Nozzle Only



5000- Mounting hardware for 1000/2500 included in kits



2001- 1' ext., 2002-2' ext.  
2003- 3' ext., 2006-6' ext.



3200 Replacement tip for 1000/2000



# Piercing Nozzles

## 900 Series

The 900 series nozzles are lightweight and combine the best of both durability and flexibility. Nozzle only needs to be driven in 3.75 inches to have full penetration of the sprayer unit giving coverage of up to 25 feet in all directions. Ideal for breaching walls and powerful enough for fires in attics, basements, mobile homes, garages, vehicles or any confined space. The series comes with nozzle, mounting hardware and optional shutoff valve.



902/204– 175 GPM

- 902- (1-2 ft. extension) without shutoff valve
- 902K- (1-2 ft. extension) with shutoff valve
- 904- (2-2 ft. extension) without shutoff valve
- 904K- (2-2 ft. extension) with shutoff valve
- 920– 2 ft. tube steel
- 926– 6 ft. tube aluminum
- 936– 6 inch extension for 906



910 Batteram  
Style 175 GPM

- 910- (1-2 ft. extension) without shutoff valve
- 910K- (1-2 ft. extension) with shutoff valve



906– 125 GPM  
90° head knurled handle

- 906– without shutoff valve
- 906K– with shutoff valve

- Replaceable nozzle tip and strike plate
- Foam & wetting gels
- All models available with or without valve
- Extension tubes available for extra reach (2 or 6 feet per extension)
- Comes standard with 1.5 NST thread (other threads available)
- Safety handle to hold the unit when a sledge hammer is being used to drive the nozzle in
- Made in U.S.A.



930– Mounting clamps for 900 series



950– Replacement nozzle for 900 series



955– Strike plate for 902, 904 & 910





# Piercing Nozzles

## The Original Augustus Tools for Vehicle Fires



AGT120

### Series 100 for Portable Extinguisher/Water Cans

90° head portable extinguisher tool with 6.5' hose

AGT110– Extinguishing agent CO2

AGT120– Extinguishing agent dry chemical

AGT130– Extinguishing agent water & foam

AGT140– Extinguishing agent (all of above) includes storage brackets



AGT220

### Series 200 for Hose lines

90° head, 55 GPM, 6.5' Hose, 5" penetrating depth, full time swivel, extinguishing agent water & foam

AGT220– Tool only

AGT230– Tool & 1" flat hose "WHIP" with 1-1/2" NST swivel

AGT240– Package includes tool, hose, valve, storage brackets

- Made in U.S.A.

# UniKart

Ideal for indoor/outdoor storage of fire hose reels, fire blankets, sand, first aid equipment, grit, salt, sand, absorbents, fertilizer, animal feed, gardening, coals, logs, etc.

- Mobile bin for multiple applications suitable for indoor and outdoor use/storage compact & space saving design with robust rubber wheels and slanted lid for water run-off
- Capacity of 20 gal.—saves continuous refilling from a stationary unit
- Ergonomic handle for ease of use— outside handles to push and inside handle to pull the cart
- Lid can be secured in vertical position for convenient dispensing/loading
- Clever balance point for easy maneuvering; will fit through pedestrian doorway
- 42-1/2"H x 22-3/8"W x 17-1/4"D (24.25 lbs.)
- Good impact resistance to -40°
- Splash proof
- Lockable
- Made in the U.K.



WJ75Y-Yellow

WJ75G-Green

WJ75R-Red



# Fire Extinguisher & Hose Cabinets

Cabinets are made of durable molded polyethylene with maximum UV protection. Built to keep out dirt, dust, water, & chemicals. Hinges and latches are made of reliable nylon. Standard colors are red door with black box. Wall or vehicle mounting. Made with poly carbonate windows that block UV rays. Door can be for left or right hand use with heavy-duty door gaskets. Built for years of trouble free service and protection. Made in the U.K.



**JFE03**

(1) 2.5 Bottle



**JFEX01**

(1) 10lb Bottle



**JBTE68**

(1) 10lb Bottle



**JEBE06**

(1) 10lb Bottle



**JBWE70**

(1) 10-20lb Bottle



**JBXE83**

(1) 20lb Bottle



**JBDE73**

20-30lb  
Cartridge Operated



**JBWE95**

For use with  
CO extinguisher

Part #	WIDTH		HEIGHT		DEPTH	
	Outside	Inside	Outside	Inside	Outside	Inside
JFEX03	8.5"	16.5"	16"			
JFEX01	9.25"	7.75"	25"	23.25"	9.5"	8.5"
JBTE68	10"	9"	26.5"	26"	10.5"	9"
JEBE06	8.75"	8.25"	24"	23.5"	9.5"	9"
JBWE70	11.75"	10.5"	27.5"	24.5"	10"	8.25"
JBXE83	12.5"	11"	32.5"	29"	10.5"	8.25"
JBDE73	14.5"	13"	26"	24"	12"	11"
JBWE95	17.5"	14"	37"	36"	11"	8"



**HRE56**

HRE56 is ideal for marine application. Holds 50ft section of hose.



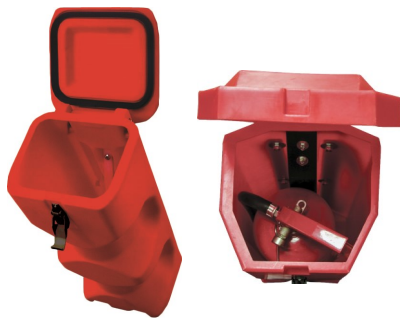
**JBXA90**



**JBDE85**

Part #	WIDTH		HEIGHT		DEPTH	
	Outside	Inside	Outside	Inside	Outside	Inside
HRE56	20"	15.5"	25"	19.75"	7.5"	5.5"
JBDE85	21.5"	20.75"	33.5"	30"	14.75"	11.75"
JBXA90	35.5"	33.5"	35.5"	32.25"	16.5"	13.5"

# Fire Extinguisher Cabinets



**JBFR64** (1) 10 lb bottle



**JBFR65**  
(1) 10 lb bottle



**JBFR75**  
(1) 20 lb bottle



Part #	WIDTH	HEIGHT	DEPTH
JBFR64	9.75"	25.25"	9.75"
JBFR65	10.24"	25"	10.75"
JBFR75	12"	29.5"	12"

Made in the U.K.

# Fire Extinguisher Stands



**JFP01-INSERT**



**JFP02**  
(2) 10-20 lb bottles



**JFP09**  
(1) 10-20 lb bottles



**JFP10**  
Two 10-20 lb bottles

- Suitable for all flat bottomed 10-20 lb. extinguishers and 10 lb. CO2 extinguishers
- Ideal for public buildings, offices, hotels, airports, show-rooms etc.
- Immediate access in case of emergency
- Cost saving flat pack design- transport, storage, etc..
- Easy snap-fit assembly
- Durable: Resists scuffing & cracking
- UV resistant PE
- 100% recyclable
- Fire extinguisher label
- Made in the U.K.



## Fire Karts



**WEX01 With JHSA1**



**WEX01 With JRHB**

- Innovative mobile fire point for 2 extinguishers (including CO2)
- Max combined weight of extinguishers: 66lbs.
- Made from non-corroding, scratch resistant, UV stable PE-100% recyclable
- Ideal for gas stations, garages, construction sites, indoor/outdoor festivals, harbors, campsites, etc.
- Extinguisher cradles for stable transport
- Slots accommodate multiple extinguishers and bracket types, hooks supplied
- Allows for highly visible alarm fitment of various shapes & sizes to the front of the unit
- Base with drainage slot, designed for various fire bucket sizes & shapes
- Solid rubber wheels
- Optimized center of gravity-easy to move, pull or push
- Design allows to slide unit up/down a step smoothly
- Made in the U.K.

WEX01....FireKart

JRHB.....Howler alarm– Rotary Bell

JHSA1.....Battery operated alarm w/ flashing lights

JPFB1.....Fire Bucket

JPBL1.....Fire Bucket Lid

\*Extinguishers not included\*



## Our Products Include:

- Piercing Nozzles
- Hose Testers
- Axes
- SCBA Seating
- SCBA Brackets
- Pike Poles
- Hose washers
- Fire Extinguisher & Hose Cabinets
- Forcible Entry Tools
- Cabinets
- Storage Bags
- Wildland Tools
- Shovels
- Rearview Cameras
- UniKarts

---

## Contact Us



### Flamefighter

208 Capital Dr. N.E.

Buffalo, MN 55313

Bus: 763-762-3440

Fax: 763-762-3461

[sales@flamefighter.com](mailto:sales@flamefighter.com)

[www.flamefighter.com](http://www.flamefighter.com)



**V.6**