

Superior Performance
Outerwear

Solar-1

Police

Fire

EMS

Security

Workwear

Mainspring America, Inc. is proud to present its new line of high-end Police Outerwear, "The Solar-1® Platinum Series". These garments are manufactured from the finest materials and represent the best workmanship in the industry. When compared to other leading brands, you will find the quality on par or better (better in our opinion, you decide!).

However, that's where the similarity ends. This line is priced sensibly, allowing resellers of the Solar-1® garments to compete effectively, while at the same time saving their customers money. We encourage you not to take our word for it - order a sample, we guarantee you will not be disappointed.

It is our goal to innovate, improve and expand our line in the years to come. We welcome suggestions from our customers for new product ideas or improvements. You should know, we have the capability to produce high tech garments which include taped seams, water proof breathable garments, 3M® reflective striping, water proof zippers and so on.

Currently Mainspring is working towards getting certain products approved to the 2013 edition of NFPA 1999 standard, as well as ANSI 107-1999. As these goals are accomplished, you will be notified of approved products.

Please feel free to contact us at 949-752-0424 Monday through Friday 7am to 4 pm PST so that we may answer any questions you may have.

We wish you the best success and look forward to working with you.

Mainspring America, Inc.
 © Copyright Mainspring America, Inc.
 All Rights Reserved.

INDEX

Platinum series



PD01 DUTY JACKET	Page 3
EM01 EMS JACKET	Page 4
PW01 POLICE WINDBREAKER	Page 5

POLICE

SOLAR-1 SERIES



CC01 DUTY JACKET	Page 6
NY01 DUTY JACKET	Page 7
PS01 FLEECE PULLOVER	Page 8
WS01 WINDSHIRT	Page 8
RJ01 RAIN JACKET	Page 9
RJP1 RAIN PANT	Page 9
RRS2 REVERSIBLE RAIN JACKET	Page 10
RR01 REVERSIBLE RAIN COAT	Page 11
CS10 COMMANDO SWEATER	Page 11
977B BOMBER JACKET	Page 12
921R SECURITY PARKA	Page 12
WJ01 POLICE WINDBREAKER	Page 13
WB01 COACHES JACKET	Page 13

POLICE/SECURITY

MP20 WORK PANTS	Page 14
MS14 WORK SHIRTS L/S	Page 14
MS24 WORK SHIRTS S/S	Page 14
MJ22 NAVY WORK JACKET	Page 15
MJ50 NAVY WORK JACKET	Page 15
SIZE CHARTS/SPECS	Page 16-19

WORK WEAR

PD01 DUTY JACKET



Available Sizes: Small Through 5XL

FEATURES:

- Waterproof Breathable outer shell and lining.
- Factory sealed seams (taped).
- Removable 3M Thinsulate liner with unique pit construction for freedom of movement.
- Bi-swing back outer shell.
- Two piece sleeves.
- 10" side zipper vents with snap tab closures for easy access to equipment.
- Fleece lined hand warmer pockets.
- Epaulets with velcro closure for easy access to buttons.
- Double Storm Flap.
- Optional seal quality pile collar with button attachment.
- Pit zippers allow access for emblem attachment.
- Badge Tab.
- Large inside zippered pockets.
- 27 1/2" jacket length.
- Top and side entry flap pockets with reversed pleats.
- Adjustable sleeve cuffs with velcro closure.

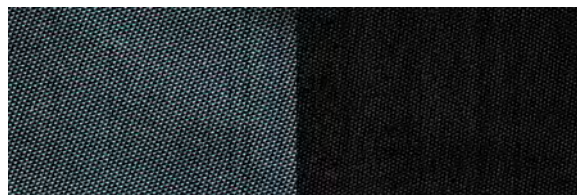
A quiet yet rugged garment designed for comfort and durability. The Outer Shell is a tough Four Ply Tussor Taslan Nylon. The underside of the shell fabric is coated to make it Waterproof Breathable ensuring the wearer is kept warm and dry during inclement weather.

To give you added protection, the inner lining is also Waterproof Breathable. The highest performance waterproof-breathable membrane is laminated to the underside. Pit zippers are provided so emblems can be sewn on without perforating the membrane.

Available Colors:

Navy

Black



EM01 EMS JACKET

A perfect parka for the EMS market. It provides blood borne pathogen protection*. It is waterproof/breathable, comes with a radio pocket and has plenty of cargo pockets for equipment. The outer shell fabric is a soft, comfortable and quiet Supplex® nylon. The free hanging lining provides access to the shell for sewing emblems or other customization without perforating the barrier.

Available Colors:
Navy Only



Available Sizes: Small Through 4XL

FEATURES:

- Double storm flap with Velcro and snap closure
- Removable 3M Thinsulate liner®
- One left breast pocket
- Two Front lower cargo pockets
- Radio pocket
- 2" wide 3M® Reflective striping around sleeves, bottom of jacket, across back
And on front storm flap
- Utility pocket with Velcro closure on left sleeve
- Optional button through fur collar
- Optional button through hood from self fabric with draw strings
- Free hanging water proof breathable lining
- Epaulets
- Velcro adjustable sleeve cuffs

*Mainspring America intends to seek certification to the 2013 edition of NFPA 1999 standard (not currently certified).



Available Sizes: Small Through 5XL

PW01 POLICE WINDBREAKER

An all-season windbreaker, with all the options. Removable zip-out liner, removable optional fur collar, weapons access and more! The outer shell is a 3-Ply Oxford Nylon. Waist length jacket, 26" length on medium regular. YKK zipper front; permanent collar with removable pile collar (optional); epaulets with Velcro closure; two upper mitered patch pockets with pleats and velcro down flaps; two lower slash hand warmer pockets; Inside zippered pocket. 10" YKK zippered side vents with snap-tab closure. 2-1/2" elasticized waistband. 2 piece sleeves with sleeve tabs.

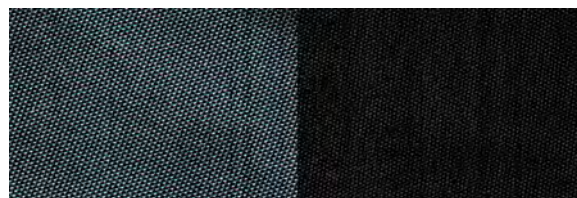
FEATURES:

- Waterproof outer shell.
- Removable 3M Thinsulate liner with unique pit construction for freedom of movement.
- Two piece sleeves.
- 10" side zipper vents with snap tab closures for easy access to equipment.
- Fleece lined hand warmer pockets.
- Epaulets with velcro closure for easy access to buttons.
- YKK Zipper front.
- Optional seal quality pile collar with button attachment.
- Badge Tab.
- Large inside zippered pockets.
- 27 1/2" jacket length.
- Top and side entry flap pockets with reversed pleats.
- Adjustable sleeve cuffs with velcro closure.

Available Colors:

Navy

Black



CC01 DUTY JACKET FOR LAW ENFORCEMENT

This jacket was made to meet the standards and tough specifications of the California Corrections Department and also the LAPD. The outer shell is a Full Dull Yarn Polyester, clear coated. The outer shell is Water Proof and Water Repellent The lining is Pressed 210 Taffeta Nylon. Thinsulate™ Liner; 210 Taffeta Nylon 210 Thinsulate Body. 100 gm Sleeves insulation. Removable Micro Poly Pile Collar. Adjustable Velcro Cuffs. Side Zipper Access. Badge Tab. Dry Clean Only.



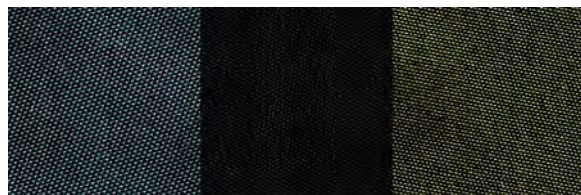
Available Sizes: Small Through 5XL
Longs: Medium Through 3XL

Features

- Removable fur collar
- Removable 3M Thinsulate liner with unique pit construction for freedom of movement
- Zipper front
- Badge Tabs
- Waterproof outer shell
- Waist length jacket 27 ½” length
- Adjustable cuff with Velcro closure
- Two lower scalloped snap down flaps with pleated pockets

Available Colors:

Navy Black Green



NY01 NYPD POLICE DUTY JACKET



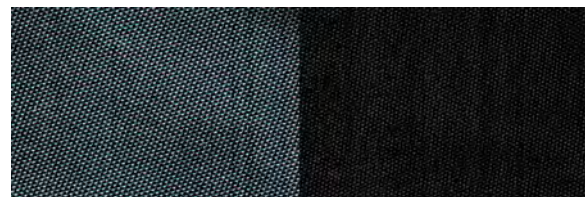
This Jacket has a Full Dull Yarn, Taslan Nylon Shell which is waterproof/breathable. Nylon Rib Waistband and Cuffs. 100% Nylon Taffeta lining. Double storm flap front. Removable Thinsulate™ Liner; 200 gm Thinsulate™ Body; 100 gm Thinsulate™ Sleeves. Shoulder Epaulets and Pocket Flaps with 24 Ligne Gold "P" Buttons (Silver "P" Buttons and Gold "NYC" Buttons available upon request). Side Zipper Access. Badge Tab. Dry Clean Only

Available Sizes: Small Through 5XL
Longs: Medium Through 3XL

Available Colors:

Navy

Black



Features:

- Nylon Rib Waistband and Cuffs.
- 100% Nylon Taffeta lining.
- Double storm flap front.
- Removable Thinsulate™ Liner - 200 gm
- Thinsulate™ Body - 100 gm
- Thinsulate™ Sleeves.
- Shoulder Epaulets and Pocket Flaps with 24 Ligne Gold "P" Buttons (Silver "P" Buttons and Gold "NYC" Buttons available upon request).
- Side Zipper Access.
- Badge Tab.
- Dry Clean Only.

PS01 FLEECE PULLOVER

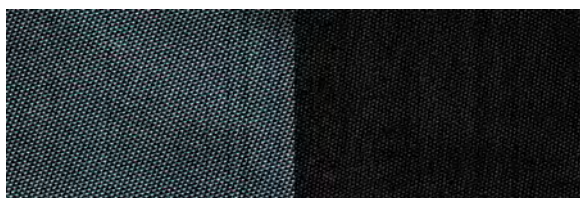
A very comfortable and stylish Pullover. A super rich and silky feeling Poly Fleece Outer Shell, V-neck Style. 1/2 Zipper front. Nylon Knit wristlets. Hand Or Machine wash. May be dry cleaned.

Available Sizes: Small Through 5XL

Available Colors:

Navy

Black



WSO1 WINDSHIRT

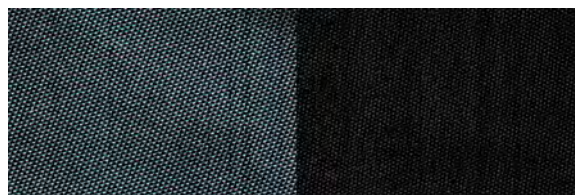
A very economical yet good looking, comfortable and functional garment. The outer shell is a 100% Taslan Nylon, PU coated to make the garment water resistant. V-neck collar, two front slash pockets. Oxford Nylon epaulets. Acrylic knit wristlets. Hand or Machine wash. May be dry cleaned.

Available Sizes: Small Through 5XL

Available Colors:

Navy

Black



RJ01 RAIN JACKET

A top of the line Rain Jacket with a waterproof/breathable shell. Milky coating for smooth finish. Taffeta lining. Attached hood. Two front pockets. Elastic cuffs. Machine or hand wash. May be dry cleaned. (Lime Green with 1" Reflective Silver Striping.)

Available Colors:

Black

Lime



Available Sizes: Small Through 5XL

RJP1 RAIN PANT

A top of the line Rain Pant with a waterproof/breathable shell. Milky coating for smooth finish. Taffeta lining. Drawstring at waist. Snaps on trouser bottom. Machine or hand wash. May be dry cleaned. (Lime Green with 1" Reflective Silver Striping.)

Available Colors:

Black

Lime



Available Sizes: Small Through 5XL

RRS2 THIGH LENGTH POLICE RAINCOAT REVERSIBLE



Hip Length Coat Style Reversible Rain Coat, with double storm flap and snaps down front with removable hood. Water proof to 10000 MM. Factory sealed seams (taped). 2 Inch 3M Reflective striping on sleeves, shoulder and chest.

Available Colors:

Black/Orange Black/Lime



Features:

- Hip length coat style reversible rain coat.
- Double storm flap with 5 snaps down closure.
- Removable hood.
- 100% reversible.
- 3M Reflective stripes for High Visibility.
- Badge Tabs on each side.
- Adjustable cuff with Velcro closure.
- Side vents with Velcro closure for hip access.

Available Sizes: Small Through 5XL



RR01 KNEE LENGTH POLICE RAINCOAT REVERSIBLE

A Knee Length Police Raincoat reversible to Lime Green/Orange to Black. Clear coated Oxford Nylon. High water proof standard - Water proof to 3000mm. Factory sealed seams (taped). Double storm flap and snap down front, two slash front pockets. 2 eyelets for holding badge on left breast

Available Colors:
Black/Lime



Available Sizes: Small Through 5XL



CS10 COMMANDO SWEATER

The best commando acrylic commando sweater on the market! This commando sweater is constructed from a state-of-the-art ANTI-PIL yarn, ensuring a crisp look for the life of the garment. Another quality aspect is the "memory of this sweater. If stretched the sweater will come back to its original shape.

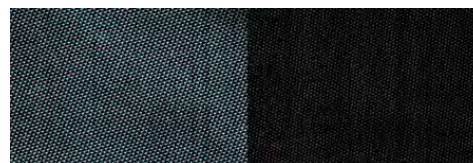
Features:

- 100% Anti-Pil Acrylic
- 2X2 Rib Knit
- V-Neck commando style
- Matching color fabric patches for elbow and shoulder

Available Colors:

Navy

Black



Available Sizes: Small Through 5XL

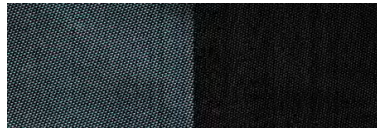


977B BOMBER JACKET

Our “Economy” Bomber that looks and feels anything but, at a great price. 27” Length, 100% Nylon, waterproof shell with Nylon lining. Polyester quilting for effective insulation. Epaulets with metal shoulder snap. YKK Zipper front, Two patch pockets with velcro closure and side entry to keep hands warm. Knit wristlets, with vinyl trim on cuffs for style and durability. Badge tab included. Pile Collar. Hand or Machine Wash. Dry Clean okay.

Available Sizes: Small Through 5XL

Available Colors:
Navy Black

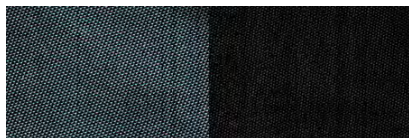


921R SECURITY PARKA DUTY JACKET

Super Value Security Parka Jacket. 34” Length with snap down side slits for easy access. 100% Nylon, water resistant shell (polyurethane coated) 100% Nylon lining. Polyester quilting for effective insulation Drawstring at waist for comfortable adjustment. YKK Zipper front, Two patch pockets and two slash pockets. Knit wristlets. Badge tab included. Pile Collar, Zip off hood with drawstring. Hand or Machine Wash. Dry Clean okay.

Available Sizes: Small Through 5XL

Available Colors:
Navy Black



WJ01 NYLON POLICE WINDBREAKER



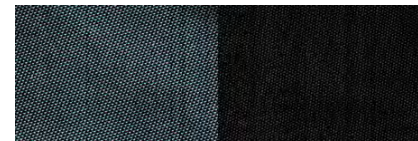
Perfect for Spring and Fall. The outer shell for this wind breaker is made from 100% Oxford Nylon that has passed the rain test - water proof and water resistant. The lining is Nylon Taffeta. Two front pleated patch pockets. Epaulets and Badge Tab. Machine or hand wash. May be Dry Cleaned.

Available Sizes: Small Through 5XL

Available Colors:

Navy

Black



WB01 NYLON WINDBREAKER COACHES JACKET

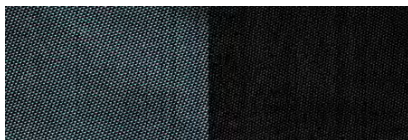
Nylon Windbreaker, lined Outer Shell of nylon taffeta, fully lined with 100% polyester brushed tricot. Snap Front, elastic cuffs, reinforced slash front pockets, drawstring in bottom hem. Water-resistant, machine washable.

Available Sizes: Small Through 5XL

Available Colors:

Navy

Black





MS24 Light Blue, MP20 Khaki

MS24/14 INDUSTRIAL WORK SHIRT

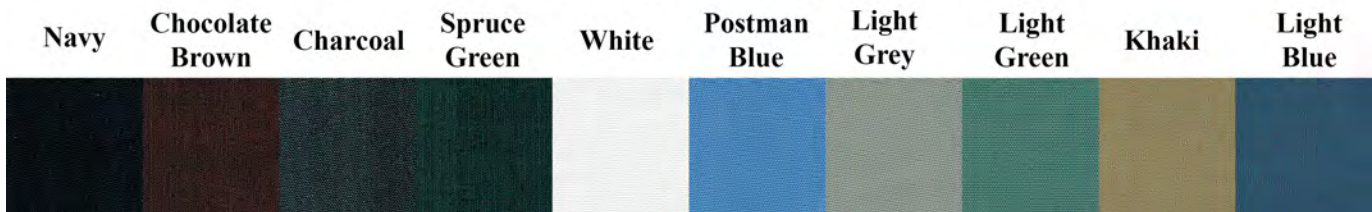
Our line of work wear shirts have been designed and tested to comply with Industrial Laundry Standards and perform better in wash tests than all our competitors. MS24 (Short Sleeve) MS14 (Long Sleeve)

Features:

- Blend: 65% Polyester/35% Cotton
- Finish: Pre-cure durable press, soil release
- Collar: Convertible with sewn-in-stays
- Cuffs: One piece, button closure
- Pockets: Two button-thru spade style pockets with angled bar with button closure
- Facing: Stitched down front

Available Sizes:
Small Through 7XL
Longs: Medium - 7XL

MS24/14 WORK SHIRTS AVAILABLE COLOR SWATCHES



MP20 INDUSTRIAL WORK PANT

Solar-1® Work Pants are the absolute best in the industry. The excellent fit and construction are just part of the story. The fabric that these products are made from is unparalleled in its ability to withstand wear and tear, shrinkage, stains, wrinkles and fading.

Available Sizes:

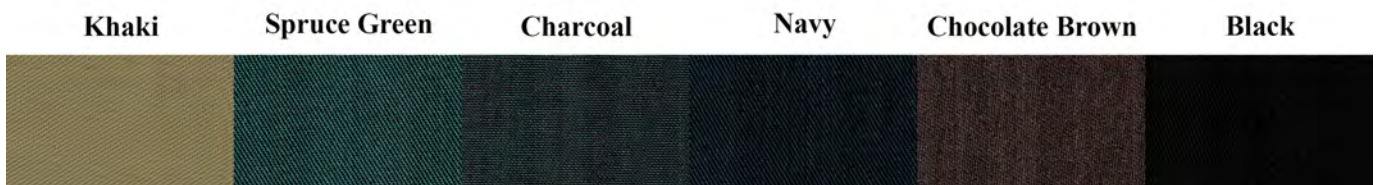
Waist: 28-600
Length: 28-37U7U



Features:

- Fabric: 8 oz. Vat dyed twill weave
- Blend: 65% polyester/35% combed cotton
- Finish: Post-cure durable press, soil release
- Closure: Brass ratcheting zipper, button closure at waist
- Waistband: Jean style waist band with button closure
- Pockets: Two slack style front, two set-in hip, button on left
- Other: Darts over hip pockets for better fit

MP20 WORK PANTS AVAILABLE COLOR SWATCHES



MJ22 LINED IKE WORK JACKET W/ SLASH POCKETS

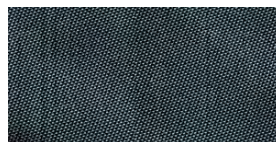
Features:

- Fabric: 8 oz Twill
- Blend: 65% polyester/35% combed cotton
- Finish: Acrylic Coated, Water repellent, soil release
- Insulation: Diamond quilted, polyurethane
- Lining: 100% Nylon
- Closure: Brass ratcheting Zipper
- Cuffs: Button Closure
- Waistband: Waist length with adjustable button tabs
- Pockets: Two lower welted inset slash pockets
- One utility pocket on left sleeve

Available Sizes:

Small - 3XL

Available Colors:
Navy Only



MJ22 Navy

MJ50 LINED IKE WORK JACKET

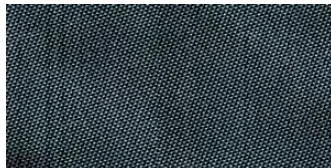
Features:

- Fabric: 8 oz Twill
- Blend: 65% polyester/35% combed cotton
- Finish: Acrylic Coated, Water repellent, soil release
- Insulation: Diamond quilted, polyurethane
- Lining: 100% Nylon
- Closure: Brass ratcheting Zipper
- Cuffs: Button Closure
- Waistband: Waist length with adjustable button tabs
- Pockets: Two welted inset pockets
- One utility pocket on left sleeve

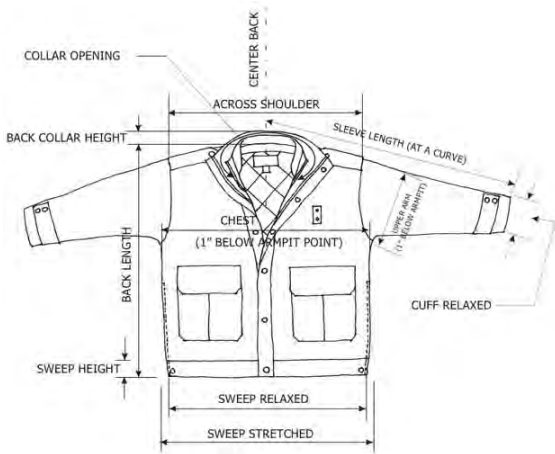
Available Sizes:

Small - 3XL

Available Colors:
Navy Only

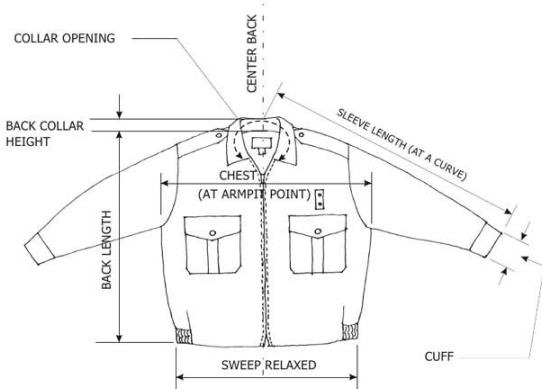
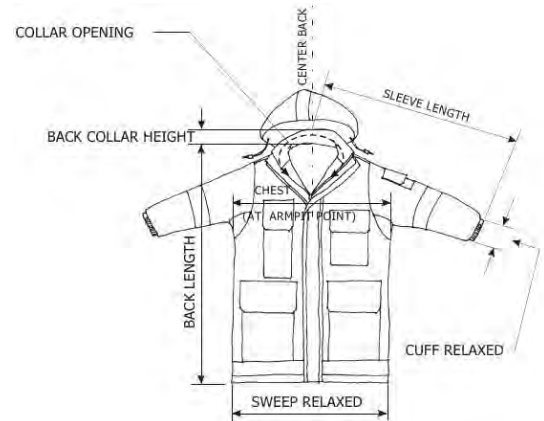


MJ50 Navy



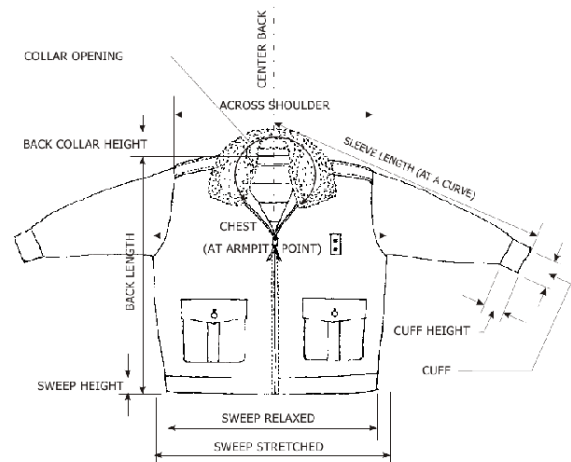
PD01	S	M	L	XL	2XL	3XL	4XL	5XL
Chest	47	51	55	59	63	67	71	75
Sweep Relaxed	38	42	46	50	54	58	62	66
Sweep Stretched	45	49	53	57	61	65	69	73
Back Length (C.B.)	27	27 1/2	28	28 1/2	29	29 1/2	30	30 1/2
Sleeve Length (C.B.)	35-1/2	36 1/2	37 1/2	38 1/2	39	39 1/2	40	40 1/2
Across Shoulder	20 1/4	21 1/2	22 3/4	24	25 1/4	26 1/2	27 3/4	29
Collar Opening	21	21	21	23	23	23	25	25
Collar Height	2 1/2	2 1/2	2 1/2	2 1/2	2 1/2	2 1/2	2 1/2	2 1/2
Sweep Height	2 1/2	2 1/2	2 1/2	2 1/2	2 1/2	2 1/2	2 1/2	2 1/2
Cuff Relax	10 1/2	10 3/4	11	11 1/4	11 1/2	11 3/4	12	12 1/4
Upper Arm	20	20 3/4	21 1/2	22 1/4	23	23 3/4	24 1/2	25 1/4

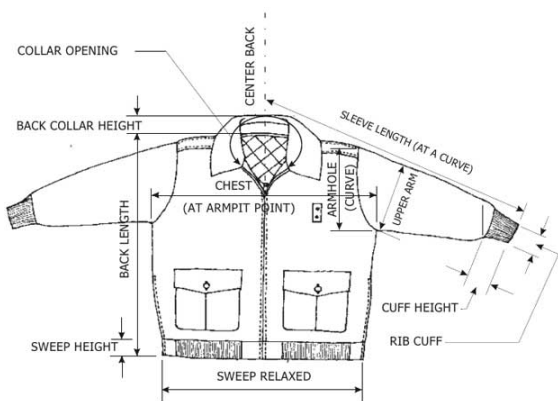
EM01	S	M	L	XL	2XL	3XL	4XL
Chest	48	52	56	60	64	68	72
Sweep Relaxed	46	50	54	58	62	66	70
Back Length	33	33 1/2	34	34 1/2	35	35 1/2	36
Sleeve Length	35	36 1/2	37	38 1/2	39	40	41
Cuff	10 1/2	10 1/2	11	11	11 1/2	11 1/2	12
Collar Opening	21	21	21	23	23	23	25
Sweep Height	1	1	1	1	1	1	1



PW01	S	M	L	XL	2XL	3XL	4XL	5XL
Chest	46	50	54	58	62	66	70	74
Sweep Relaxed	37	41	45	49	53	57	61	65
Back Length (C.B.)	25 1/2	26	26 1/2	27	27 1/2	28	28 1/2	29
Sleeve Length (C.B.)	34-1/2	35 1/4	36	36 3/4	37 1/2	38 1/4	39	39 3/4
Cuff	10	10	10	11	11	11	12	12
Collar Opening	21	21	21	23	23	23	25	25
Back Collar	4	4	4	4	4	4	4	4
Cuff Height	2 1/4	2 1/4	2 1/4	2 1/4	2 1/4	2 1/4	2 1/4	2 1/4
Sweep Height	2 1/2	2 1/2	2 1/2	2 1/2	2 1/2	2 1/2	2 1/2	2 1/2

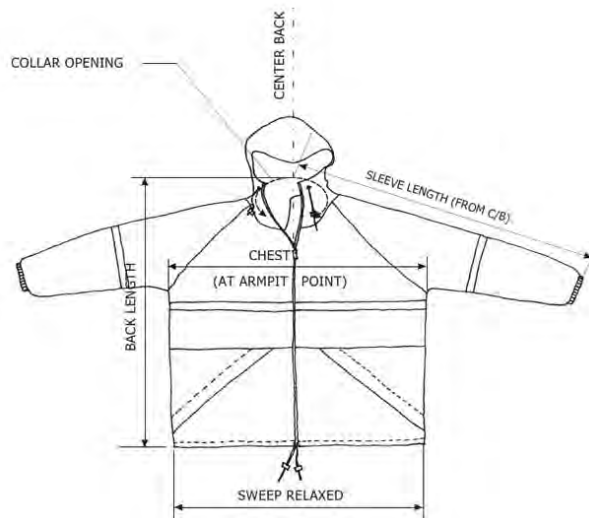
CC01	S	M	L	XL	2XL	3XL	4XL	5XL
Chest	48	52	56	60	64	68	72	76
Sweep Relaxed	34	38	42	46	50	54	58	62
Sweep Stretched	43	47	51	55	59	63	67	71
Back Length (C.B.)	27	27 1/2	28	28 1/2	29	29 1/2	30	30 1/2
Back Width (C.B. down 6"	19 3/8	20 3/4	22 1/8	23 1/2	24 7/8	26 1/4	27 5/8	29
Sleeve Length (C.B.)	35-1/2	36 1/2	37 1/2	38 1/2	39	39 1/2	40	40 1/2
Upper Arm	18 3/4	20	21 1/4	22 1/2	23 3/4	25	26 1/4	27 1/2
Across Shoulder	20 1/4	21 1/2	22 3/4	24	25 1/4	26 1/2	27	29
Armhole (curve)	21 1/2	23	24 1/2	26	27 1/2	29	30 1/2	32
Collar Length	4	4	4	4	4	4	4	4
Cuff	10 1/2	11	11	11 1/2	11 1/2	12	12	12
Sweep Height	2 1/2	2 1/2	2 1/2	2 1/2	2 1/2	2 1/2	2 1/2	2 1/2
Cuff Height	2 1/2	2 1/2	2 1/2	2 1/2	2 1/2	2 1/2	2 1/2	2 1/2
Collar Opening	19 1/2	20 1/4	21	21 3/4	22 1/2	23 1/4	24	24 3/4



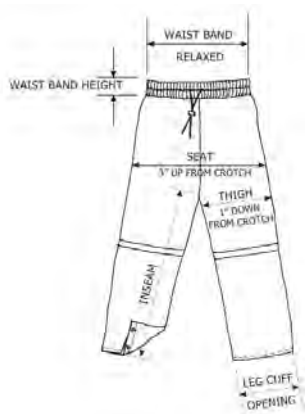


NY01	S	M	L	XL	2XL	3XL	4XL	5XL
Chest	48	52	56	60	64	68	72	76
Back Length (C.B.)	26	26 1/2	27	27 1/2	28	28 1/2	29	29 1/2
Sweep Relaxed	33	37	41	45	49	53	57	61
Sleeve Length (C.B.)	36	37	8	39	40	41	42	43
Rib Cuff	3	3	3	3 1/2	3 1/2	3 1/2	4	4
Collar Opening	18 1/2	19	19 1/2	20	20 1/2	21	21 1/2	22
Back Collar Height	5	5	5	5	5	5	5	5
Sweep Height	2 1/2	2 1/2	2 1/2	2 1/2	2 1/2	2 1/2	2 1/2	2 1/2
Cuff Height	2 1/2	2 1/2	#####	2 1/2	2 1/2	2 1/2	2 1/2	2 1/2

PS01	S	M	L	XL	2XL	3XL	4XL	5XL
Chest	46	50	54	58	62	66	70	74
Back Length	25 1/2	26 1/4	27	27 3/4	28 1/2	29 1/4	30	30 3/4
Sweep Relaxed	30	34	38	42	46	50	54	58
Sleeve Length (FRM C.B.)	34 1/2	35 1/2	36 1/2	37 1/2	38 1/2	39	39 1/2	40
Across Shoulder	21 3/4	23	24 1/4	25 1/2	26 3/4	28	29 1/4	30 1/2
Back Collar Height	3 3/4	3 3/4	3 3/4	3 3/4	3 3/4	3 3/4	3 3/4	3 3/4

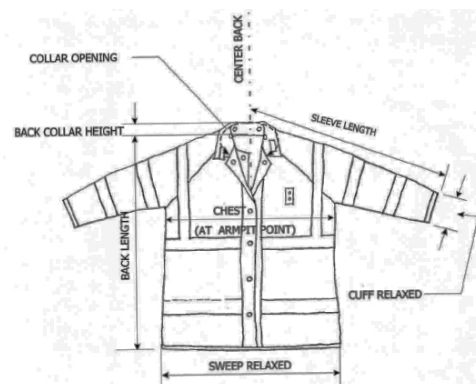


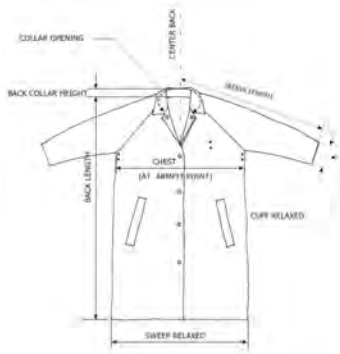
RJ01	S	M	L	XL	2XL	3XL	4XL	5XL
Chest	46	50	54	58	62	66	70	74
Back Length (C.B.)	27 1/2	28	28 1/2	29	29 1/2	30	30 1/2	31
Sweep Relaxed	44	48	52	56	60	64	68	72
Sleeve Length (C.B.)	34	35	36	37	38	39	39 3/4	40 1/2
Collar Opening	24 1/2	25	25 1/2	26	26 1/2	27	27 1/2	28



RJP1	S	M	L	XL	2XL	3XL	4XL	5XL
Waist Band Relaxed	29	30 1/2	32	33 1/2	35	36 1/2	38	39 1/2
Front Raise- Inc. Waist Band	15	15 1/2	16	16 1/2	17	17 1/2	18	18 1/2
Back Raise- Inc. Waist Band	18 1/4	18 3/4	19 1/4	19 3/4	20 1/4	20 3/4	21 1/4	21 3/4
Seat (3" up from Crotch)	46	48	50	52	54	56	58	60
Thigh (1" down from Crotch)	27 1/4	28 1/4	29 1/4	30 1/4	31 1/4	32 1/4	33 1/4	34 1/4
Waist Band Height	2	2	2	2	2	2	2	2
Leg Cuff Opening	20 1/2	21	21 1/2	22	22 1/2	23	23 1/2	24
Inseam	28 1/2	29	29 1/2	30	30 1/2	31	31 1/2	32

RRS2	S	M	L	XL	2XL	3XL	4XL	5XL
Chest	43	46	49	52	55	58	61	64
Sweep Relaxed	47	50	53	56	59	62	65	68
Back Length (C.B.)	29	30	31	32	33	34	35	36
Sleeve Length (C.B.)	33	33 3/4	34 1/2	35 1/2	36	36 3/4	37 1/2	38 1/4
Collar Opening	18 1/4	18 1/4	18 1/4	20 1/4	20 1/4	20 1/4	22 1/4	22 1/4
Cuff	13 1/4	13 1/4	13 1/4	13 1/4	14 1/4	14 1/4	14 3/4	14 3/4
Back Collar Height	3 3/4	3 3/4	3 3/4	3 3/4	3 3/4	3 3/4	3 3/4	3 3/4

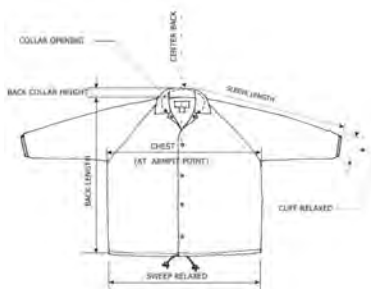




RR01	S	M	L	XL	2XL	3XL	4XL	5XL
Chest	45	49	53	57	61	65	69	73
Back Length (C.B.)	46 1/2	47	47 1/2	48	48 1/2	49	49 1/2	50
Sweep Relaxed	50	54	58	62	66	70	74	78
Sleeve Length (C.B.)	34	34 3/4	35 1/2	36 1/2	37 1/2	38 1/2	39 1/2	40 1/2
Collar Opening	19 1/2	20 1/4	21	21 1/4	22 1/2	23 1/2	24	24 3/4
Cuff	12	12 1/4	12 1/2	12 3/4	13	12 1/4	13 1/2	13 3/4

977B	S	M	L	XL	2XL	3XL	4XL	5XL
Chest	48	52	56	60	64	68	72	76
Back Length (C.B.)	26	26 1/2	27	27 1/2	28	28 1/2	29	29 1/2
Sweep Relaxed	28	32	36	40	44	48	52	56
Sweep Stretched	42	46	50	54	58	62	66	70
Across Shoulder	19 3/4	21	22 1/4	23 1/5	24 3/4	26	27 1/4	28 1/2
Back Collar Height	4	4	4	4	4	4	4	4
Neck Opening	17 1/2	18	18 1/2	19	19 1/2	20	20 1/2	21
Sleeve Length	34	35	36	36	37	38	39	40
Uparm	22	23	24	25	26	27	28	29
Sweep Height	2 1/4	2 1/4	2 1/4	2 1/4	2 1/4	2 1/4	2 1/4	2 1/4

921R	S	M	L	XL	2XL	3XL	4XL	5XL
Chest	47	51	55	59	63	67	71	75
Back Length (C.B.)	31 1/2	32 1/2	33 1/2	34 1/2	35 1/2	36 1/2	37 1/2	38 1/2
Sweep Relaxed	47	51	55	59	63	67	71	75
Back Collar Height	4 1/2	4 1/2	4 1/2	4 1/2	4 1/2	4 1/2	4 1/2	4 1/2
Neck Opening	21	22	23	24	25	26	27	28
Sleeve Length	34 1/2	35 1/2	36 1/2	37	37 1/2	38	38 1/2	39



WB01	S	M	L	XL	2XL	3XL	4XL	5XL
Collar Opening	18 1/2	19	19 1/2	20	20 1/2	21	21 1/2	22
Back Collar	3 1/2	3 1/2	3 1/2	3 1/2	3 1/2	3 1/2	3 1/2	3 1/2
Chest	46	50	54	58	62	66	70	74
Sweep	45	49	53	57	61	65	69	73
Back Length	28 1/2	29	29 1/2	30	30 1/2	31	31 1/2	32
Sleeve Length (C.B.)	36	36 1/2	37	37 1/2	38	38 1/2	39	39 1/2
Cuff Relaxed	8 1/2	8 1/2	9	9	9 1/2	9 1/2	10	10



MS24	S	M	L	XL	2XL	3XL	4XL	5XL	6XL	7XL	L-L	XL-L	2XL-L	3XL-L	4XL-L	5XL-L	6XL-L	7XL-L
NECK CIRC (BOTTOM CENTER TO	14-3/4	15-1/2	16-1/2	17-1/2	18-1/2	19-1/2	20-1/2	21-1/2	22-1/2	23-1/2	16-1/2	17-1/2	18-1/2	19-1/2	20-1/2	21-1/2	22-1/2	23-1/2
NECK WIDTH (HPS TO HPS AT SEAM)	5-1/2	5-3/4	6	6-1/4	6-1/2	6-3/4	7	7-1/2	8	8-1/2	6	6-1/4	6-1/2	6-3/4	7	7-1/2	8	8-1/2
FRONT NECK DROP (FROM IMAGE LINE)	2-3/4	3	3-1/4	3-1/2	3-3/4	4	4-1/4	4-1/4	4-1/2	4-1/2	3-1/4	3-1/2	3-3/4	4	4-1/4	4-1/4	4-1/4	4-1/2
BACK NECK DROP (FROM IMAGE LINE)	5/8	5/8	3/4	3/4	7/8	7/8	1	1-1/8	1-1/4	1-3/8	3/4	3/4	7/8	7/8	1	1-1/8	1-1/4	1-3/8
COLLAR HEIGHT AT CB	3	3	3	3	3	3	3	3	3	3	3	3	3	3	3	3	3	3
COLLAR POINT LENGTH	3	3	3	3	3	3	3	3	3	3	3	3	3	3	3	3	3	3
ACROSS SHOULDER (SET IN SLEEVE)	15-3/4	17-1/4	18-3/4	20-1/4	21-1/4	22-1/4	23-1/4	24-1/4	25-1/4	26-1/4	18-3/4	20-1/4	21-1/4	22-1/4	23-1/4	24-1/4	25-1/2	26-1/4
ACROSS BACK (AT YOKE SEAM)	15	16-1/2	18	19-1/2	20-1/2	21-1/2	22-1/2	23-1/2	24-1/2	25-1/2	18	19-1/2	20-1/2	21-1/2	22-1/2	23-1/2	24-1/2	25-1/2
BK YOKE HEIGHT (CB)	3-1/2	3-1/2	3-1/2	3-1/2	3-1/2	3-1/2	3-1/2	3-1/2	3-1/2	3-1/2	3-1/2	3-1/2	3-1/2	3-1/2	3-1/2	3-1/2	3-1/2	3-1/2
BUST/CHEST 1" BELOW ARMHOLE	41-1/2	45-1/2	49-1/2	53-1/2	56-1/2	60	63	66	69	72	49-1/2	53-1/2	56-1/2	60	63	66	68	72
STRAIGHT ACROSS	41	45	49	53	56	60	64	68	72	76	49	53	56	60	64	68	70	76
ARMHOLE CIRCUMFERENCE	20-1/2	21-1/2	22-1/2	23-1/2	24-1/2	25-1/2	26-1/2	27-1/2	28-1/2	29-1/2	22-1/2	23-1/2	24-1/2	25-1/2	26-1/2	27-1/2	28-1/2	29-1/2
CUFF LENGTH	15	16	16-1/2	17-1/2	18-1/2	19-1/2	20	21	22	23	16-1/2	17-1/2	18-1/2	19-1/2	20	21	21-1/2	23
CUFF HEM	3/4	3/4	3/4	3/4	3/4	3/4	3/4	3/4	3/4	3/4	3/4	3/4	3/4	3/4	3/4	3/4	3/4	3/4
POCKET POSITION (FROM HPS)	9-1/2	9-3/4	9-3/4	10	10	10-3/4	10-3/4	11	11	11	9-3/4	10	10	10-3/4	10-3/4	11	11	11
POCKET POSITION (FROM CENTER FRONT)	1-3/4	2	2	2-3/4	2-3/4	2-3/4	3-3/4	3-3/4	3-3/4	3-3/4	2	2-3/4	2-3/4	2-3/4	3-3/4	3-3/4	3-3/4	3-3/4
SLEEVE LENGTH (FROM CBN)	10	10-3/8	10-3/4	11	11-1/4	11-1/2	11-1/2	11-3/4	11-3/4	12	11-3/4	11-3/4	12-1/4	12-1/2	12-1/2	12-3/4	13	13
BACK LENGTH (CB TO HEM)	31-1/2	32	32-1/2	32-1/2	32-3/4	33	33-1/4	33-1/2	34	34-1/2	36-1/2	36-1/2	36-3/4	37	37-1/4	37-1/2	38	38-1/2

MS14	S	M	L	XL	2XL	3XL	4XL	5XL	6XL	7XL	L-L	XL-L	2XL-L	3XL-L	4XL-L	5XL-L	6XL-L	7XL-L
NECK CIRC (BOTTOM CENTER TO	14-3/4	15-1/2	16-1/2	17-1/2	18-1/2	19-1/2	20-1/2	21-1/2	22-1/2	23-1/2	16-1/2	17-1/2	18-1/2	19-1/2	20-1/2	21-1/2	22-1/2	23-1/2
NECK WIDTH (HPS TO HPS AT SEAM)	5-1/2	5-3/4	6	6-1/4	6-1/2	6-3/4	7	7-1/2	8	8-1/2	6	6-1/4	6-1/2	6-3/4	7	7-1/2	8	8-1/2
FRONT NECK DROP (FROM IMAGE LINE)	2-3/4	3	3-1/4	3-1/2	3-3/4	4	4-1/4	4-1/4	4-1/2	4-1/2	3-1/4	3-1/2	3-3/4	4	4-1/4	4-1/4	4-1/4	4-1/2
BACK NECK DROP (FROM IMAGE LINE)	5/8	5/8	3/4	3/4	7/8	7/8	1	1-1/8	1-1/4	1-3/8	3/4	3/4	7/8	7/8	1	1-1/8	1-1/4	1-3/8
COLLAR HEIGHT AT CB	3	3	3	3	3	3	3	3	3	3	3	3	3	3	3	3	3	3
COLLAR POINT LENGTH	3	3	3	3	3	3	3	3	3	3	3	3	3	3	3	3	3	3
ACROSS SHOULDER (SET IN SLEEVE)	15-3/4	17-1/4	18-3/4	20-1/4	21-1/4	22-1/4	23-1/4	24-1/4	25-1/4	26-1/4	18-3/4	20-1/4	21-1/4	22-1/4	23-1/4	24-1/4	25-1/2	26-1/4
ACROSS BACK (AT YOKE SEAM)	15	16-1/2	18	19-1/2	20-1/2	21-1/2	22-1/2	23-1/2	24-1/2	25-1/2	18	19-1/2	20-1/2	21-1/2	22-1/2	23-1/2	24-1/2	25-1/2
BK YOKE HEIGHT (CB)	3-1/2	3-1/2	3-1/2	3-1/2	3-1/2	3-1/2	3-1/2	3-1/2	3-1/2	3-1/2	3-1/2	3-1/2	3-1/2	3-1/2	3-1/2	3-1/2	3-1/2	3-1/2
BUST/CHEST 1" BELOW ARMHOLE	41-1/2	45-1/2	49-1/2	53-1/2	56-1/2	60	63	66	69	72	49-1/2	53-1/2	56-1/2	60	63	66	68	72
STRAIGHT ACROSS	41	45	49	53	56	60	64	68	72	76	49	53	56	60	64	68	70	76
ARMHOLE CIRCUMFERENCE	21	22	23	24	25	26	27	28	29	30	23	24	25	26	27	28	28-1/2	30
CUFF LENGTH	9	9-1/2	10	10-1/2	10-3/4	10-3/4	10-3/4	10-3/4	11	11	10	10-1/2	10-3/4	10-3/4	10-3/4	10-3/4	21-1/2	11
CUFF HEM	2-1/2	2-1/2	2-1/2	2-1/2	2-1/2	2-1/2	2-1/2	2-1/2	2-1/2	2-1/2	2-1/2	2-1/2	2-1/2	2-1/2	2-1/2	2-1/2	3/4	2-1/2
SLEEVE SLIT OPENING (NOT INCLUDE CUFF)	4-1/2	4-1/2	4-1/2	4-1/2	4-1/2	4-1/2	4-1/2	4-1/2	4-1/2	4-1/2	4-1/2	4-1/2	4-1/2	4-1/2	4-1/2	4-1/2	11	4-1/2
POCKET POSITION (FROM HPS)	9-1/2	9-3/4	9-3/4	10	10	10-3/4	10-3/4	11	11	11	9-3/4	10	10	10-3/4	10-3/4	11	3-3/4	11
POCKET POSITION (FROM CENTER FRONT)	1-3/4	2	2	2-3/4	2-3/4	2-3/4	3-3/4	3-3/4	3-3/4	3-3/4	2	2-3/4	2-3/4	2-3/4	3-3/4	3-3/4	13	3-3/4
SLEEVE LENGTH (FROM CBN)	34	34-1/2	35	35-1/2	36	36	36	36	36-1/2	36-1/2	37-1/2	38	38-1/2	38-1/2	39	39	39-1/2	39-1/2
BACK LENGTH (CB TO HEM)	31-1/2	32	32-1/2	32-1/2	32-3/4	33	33-1/4	33-1/2	34	34-1/2	36-1/2	36-1/2	36-3/4	37	37-1/4	37-1/2	38	38-1/2

*For additional information
on **Solar-1**[®] products,
please contact us at:*



MAINSRING AMERICA, INC.
17801 Sky Park Circle, Suite H
Irvine, CA 92614
Phone: (949) 752-0424
Fax: (949) 752-0464

*Or visit our website at:
www.solar1clothing.com*