

PERFECT FIT SHIELD WALLETS®

Volume 12 | www.perfectfitusa.com



HIDDEN BADGE WALLET
STYLE # 105 - SEE PAGE 2



RECESSED BELT CLIP BADGE HOLDER
STYLE # 716 - SEE PAGE 9



SAM BROWNE LEATHER BELT
STYLE # 8000 - SEE PAGE 11



YOUR BADGE DESERVES A PERFECT FIT.

TABLE OF CONTENTS

PERFECT FIT
SHIELD WALLETS

PERFECT FIT

| | | | | | |
|--------------------------------|------|---|----|-----------------------|-------|
| Badge / ID Wallets..... | 2-4 | Key Holders..... | 13 | Glove Holders..... | 18 |
| Badge / ID Cases..... | 5 | Flashlight Holders..... | 14 | Accessories..... | 19-21 |
| Badge / ID Flip Out Cases..... | 6 | Flashlight & Defense Spray Holders..... | 15 | Nylon Duty Belts..... | 22 |
| Badge & Double ID Cases..... | 7-8 | Baton Holders..... | 15 | Nylon Duty Items..... | 23-24 |
| Belt Clip & Around-Neck..... | 9-10 | Handcuff Holders..... | 16 | Firefighter Gear..... | 25 |
| Duty Belts..... | 11 | Radio Holders..... | 17 | Gear Bags..... | 26 |
| Garrison Belts..... | 12 | | | | |

D&K
Badge Wallets & Accessories

D&K BADGE WALLETS & ACCESSORIES

| | | | | | |
|-------------------------|-------|--------------------|----|------------------|----|
| Badge / ID Wallets..... | 27-28 | Badge Holders..... | 29 | Accessories..... | 29 |
|-------------------------|-------|--------------------|----|------------------|----|

ARMORFLEX
GLOVES

ARMORFLEX GLOVES

| | |
|---------------------------|-------|
| Public Safety Gloves..... | 30-32 |
|---------------------------|-------|

For Product Features, see Page 33

BESTSELLERS



HIDDEN BADGE WALLET
W/ 5 CC SLOTS, SINGLE ID WINDOW
STYLE # 105 - SEE PAGE 2



RECESSED BELT CLIP BADGE HOLDER
STYLE # 716 - SEE PAGE 9



SAM BROWNE LEATHER BELT
STYLE # 8000 - SEE PAGE 11



NEOPRENE / LEATHER ALL WEATHER CUT
RESISTANT KEVLAR® LINED DUTY GLOVES
STYLE # PFU-14 - SEE PAGE 30



WELCOME TO PERFECT FIT

When you choose Perfect Fit, you're supporting more than just Made in the USA. You're supporting a dedication to old-fashioned work ethic, small town values and workplace pride from a small community in rural America.

Perfect Fit is headquartered in Corinna, Maine, population 2,198. Our company is made up of 30 employees who come to work each day committed to producing the highest quality product in the industry. The factory is buzzing with sounds of machines and members of our community working hard to exceed your expectations.

We stand behind the products we make, work hard to turn your order around quickly and back it up with real people to the answer the phone when you need help.

An old-fashioned commitment to community and quality. It's what you support when you choose Perfect Fit.

And I thank you for your support!


Michael Levesque,
Owner

PERFECT FIT
SHIELD WALLET

D&K
Badge Wallets & Accessories

ARMOR FLEX
GLOVES





**HIDDEN BADGE WALLET
W/ 5 CC SLOTS & SINGLE ID WINDOW**

| Style # | ID Size | Badge Width |
|---------|-------------|-------------|
| 105 | 2 1/2" x 4" | 2 3/4" |



**BADGE WALLET W/ 5 CC SLOTS
& FLIPPING ID WINDOW**

| Style # | Max ID Size | Badge Width |
|---------|-----------------|-------------|
| 104 | 2 3/8" x 3 3/4" | 2 5/8" |



**DUTY LEATHER TOP OPEN BADGE AND ID WALLET
(WEST COAST STYLE)**

| Style # | ID Size | Badge Width |
|----------------------------|-------------|-------------|
| 124-MP (with money pocket) | 3" x 3 1/2" | 3 1/4" |



BIFOLD WALLET W/ SINGLE ID

| Style # | ID Size | Badge Width |
|---------------------------|-----------------|-------------|
| 110 | 2 1/2" x 3 3/4" | 2 3/4" |
| 100-D4 | 2 3/4" x 4 1/4" | 2 3/4" |
| 100-D4-A (with double ID) | 2 3/4" x 4 1/4" | 2 3/4" |



**HIDDEN BADGE WALLET W/
MEDALLION & IMPRINT**

| Style # | ID Size | Badge Width |
|---------|-------------|-------------|
| 105-M-I | 2 1/2" x 4" | 2 3/4" |



ALL-IN-ONE WOMEN'S WALLET

| Style # | ID Size | Badge Width |
|---------|-----------------|-------------|
| 900-W | 2 1/2" x 3 1/2" | 3 1/4" |



TRIFOLD WALLET W/ DOUBLE ID WINDOW

| Style # | ID Size | Badge Width |
|---------|-------------|-------------|
| 101-A | 2 1/2" x 4" | 3" |
| 106-A | 3" x 4 1/4" | 3" |

TRIFOLD WALLET W/ SINGLE ID WINDOW

| Style # | ID Size | Badge Width |
|-------------------------|-------------|-------------|
| 101-C (with 3 CC slots) | 2 1/2" x 4" | 3" |
| 101 | 2 1/2" x 4" | 3" |
| 106 | 3" x 4 1/4" | 3" |

FEDERAL STYLE WALLETS



BADGE WALLET W/ DOUBLE ID & CC SLOTS

| Style # | ID Size | Badge Width |
|---------|-----------------|-------------|
| 120-A | 2 3/4" x 4 3/8" | 2 3/4" |
| 121-A | 3" x 5" | 2 3/4" |

BADGE WALLET W/ DOUBLE ID AND CC SLOTS

| Style # | ID Size | Badge Width |
|---------|-----------------|-------------|
| 125-A | 2 3/4" x 4 1/2" | 2 3/4" |



BIFOLD WALLET W/ 8 PICTURE SLEEVES

| Style # | ID Size | Badge Width |
|---------|-----------------|-------------|
| 102 | 2 3/4" x 3 3/4" | 2 3/4" |



BIFOLD WALLET W/ MONEY POCKET, 6 CC SLOTS & FLIPPING ID

| Style # | ID Size | Badge Width |
|---------|-----------------|-------------|
| 107 | 2 3/4" x 3 1/2" | 2 7/8" |



BIFOLD CREDIT CARD WALLET

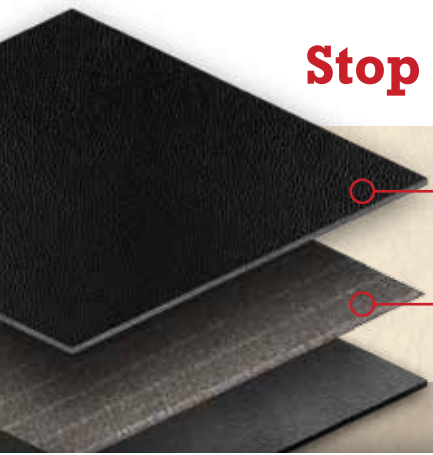
| Style # | ID Size | Badge Width |
|---------|-------------|-------------|
| 126 | 2 5/8" x 4" | 2 3/4" |



BADGE & DOUBLE ID WALLET W/ 3 CC SLOTS & MONEY POCKET

| Style # | ID Size | Badge Width |
|---------|-----------------|-------------|
| 118-A | 2 1/2" x 3 3/4" | 2 7/8" |
| 119-A | 2 3/4" x 4 3/8" | 2 7/8" |

Stop Skimmers. Protect Personal Information.



Genuine Leather
Signal-Blocking Fabric

RFID SIGNAL BLOCKING TECHNOLOGY

Ask about adding RFID technology to any wallet.



DRESS LEATHER BADGE CASE W/ SINGLE ID

| Style # | ID Size | Badge Width |
|---------|-----------------|-------------|
| 100-D1 | 2 1/4" x 3" | 2 1/2" |
| 100-D2 | 2 3/4" x 4 1/4" | 2 3/4" |
| 100-D5 | 2 3/4" x 4 1/2" | 2 3/4" |
| 100-D3 | 3" x 5" | 2 7/8" |



NON RECESSED BADGE & ID CASE W/ SNAP OR VELCRO® CLOSURES

| Style # | ID Size | Badge Width |
|---------|-----------------|-------------|
| 400 | 2 1/4" x 3 1/4" | 3" |
| 401 | 2 3/8" x 3 3/4" | 3" |



DUTY LEATHER BADGE AND ID CASE W/ SNAP OR VELCRO® CLOSURE

| Style # | ID Size | Badge Width |
|---------|-----------------|-------------|
| 4000 | 2 1/4" x 3 1/4" | 2 1/2" |
| 4001 | 2 3/8" x 3 3/4" | 2 1/2" |



DUTY LEATHER BOOK STYLE SINGLE ID & BADGE CASE

| Style # | ID Size | Badge Width |
|---------|-----------------|-------------|
| 99 | 2 1/2" x 3 3/4" | 2 7/8" |
| 96 | 2 5/8" x 3 7/8" | 2 1/2" |
| 100 | 2 5/8" x 4" | 2 3/4" |
| 100-B | 2 5/8" x 4 1/4" | 2 3/4" |
| 100-C | 2 3/4" x 4 1/2" | 2 5/8" |
| 98 | 3" x 4 1/2" | 3" |
| 1000 | 3" x 4 3/4" | 2 7/8" |
| 1001-B | 3" x 5" | 2 3/4" |

108

140



DUTY LEATHER TOP OPENING BADGE & ID CASE

| Style # | ID Size | Badge Width |
|---------|-----------------|-------------|
| 108 | 2 3/4" x 3 5/8" | 2 5/8" |
| 109 | 2 3/4" x 4 1/2" | 2 3/4" |
| 124 | 3" x 3 1/2" | 3 1/8" |
| 122 | 3" x 4 1/2" | 3" |

DRESS LEATHER TOP OPENING BADGE & ID CASE

| Style # | ID Size | Badge Width |
|---------|-----------------|-------------|
| 140 | 2 1/4" x 4 1/4" | 2 1/4" |
| 141 | 2 7/8" x 4 1/4" | 2 3/4" |



**FOUR IN ONE DRESS LEATHER BADGE CASE
W/ DOUBLE ID & 30" CHAIN**

| Style # | ID Size | Badge Width |
|---------|-----------------|-------------|
| 1005-AF | 2 3/4" x 4 5/8" | 2 3/4" |
| 1004-AF | 3" x 5" | 2 3/4" |



**DUTY LEATHER FLIP OUT
BADGE CASE W/ CC SLOTS**

| Style # | ID Size | Badge Width |
|---------|-------------|-------------|
| 857 | 3" x 4 1/2" | 2 5/8" |



**FOUR IN ONE DRESS LEATHER BADGE CASE
W/ SINGLE ID & 30" CHAIN**

| Style # | ID Size | Badge Width |
|---------|-----------------|-------------|
| 1005-F | 2 3/4" x 4 5/8" | 2 5/8" |
| 1004-F | 3" x 5" | 2 3/4" |



**FOUR IN ONE DUTY LEATHER BADGE CASE
W/ SINGLE ID & 30" CHAIN**

| Style # | ID Size | Badge Width |
|---------|-----------------|-------------|
| 113 | 2 5/8" x 4" | 2 3/4" |
| 127 | 2 3/4" x 4 1/4" | 2 3/4" |



**DUTY LEATHER FLIP OUT BADGE CASE
W/ ID WINDOW**

| Style # | ID Size | Badge Width |
|----------------------|-----------------|-------------|
| 850 (with single ID) | 2 5/8" x 4 1/4" | 2 5/8" |
| 851 (with single ID) | 3" x 4 1/2" | 2 3/4" |
| 852 (with double ID) | 2 5/8" x 4 1/4" | 2 5/8" |



**DRESS LEATHER FLIP OUT
BADGE CASE W/ DOUBLE ID**

| Style # | ID Size | Badge Width |
|---------|-----------------|-------------|
| 1002 | 2 3/4" x 4 1/4" | 2 3/4" |
| 1003 | 2 3/4" x 4 1/2" | 2 3/4" |
| 1006 | 3" x 5" | 2 3/4" |



**DUTY LEATHER TOP OPENING CASE
W/ OUTSIDE BADGE MOUNT & DOUBLE ID**

| Style # | ID Size | Badge Width |
|---------|-----------------|-------------|
| 111 | 2 1/4" x 3 3/8" | 2 1/2" |
| 112 | 2 3/4" x 4 1/2" | 2 3/4" |
| 115 | 3" x 4 1/2" | 3" |



DRESS LEATHER BADGE CASE W/ DOUBLE ID

| Style # | ID Size | Badge Width |
|---------|-----------------|-------------|
| 1005-A | 2 3/4" x 4 1/2" | 2 3/4" |
| 1004-A | 3" x 5" | 2 7/8" |



DUTY LEATHER BADGE CASE W/ DOUBLE ID

| Style # | ID Size | Badge Width |
|---------|-----------------|-------------|
| 100-A | 2 5/8" x 4" | 2 3/4" |
| 128 | 2 3/4" x 4 1/4" | 2 3/4" |
| 98-A | 3" x 4 1/2" | 3" |
| 1000-A | 3" x 4 3/4" | 2 3/4" |
| 1001-A | 3" x 5" | 2 3/4" |



**NON RECESSED BADGE AND DOUBLE ID CASE
W/ SNAP OR VELCRO® CLOSURE**

| Style # | ID Size | Badge Width |
|---------|-------------|-------------|
| 401-A | 2 3/4" x 4" | 3" |



**DUTY LEATHER BOOK STYLE CASE
W/OUTSIDE BADGE MOUNT & DOUBLE ID**

| Style # | ID Size | Badge Width |
|----------|-------------|-------------|
| 100-ABA | 2 5/8" x 4" | 2 3/4" |
| 98-ABA | 3" x 4 1/2" | 3" |
| 1000-ABA | 3" x 4 3/4" | 2 3/4" |
| 1001-ABA | 3" x 5" | 2 3/4" |

FEDERAL STYLE CASE



**DRESS LEATHER BADGE CASE
W/ DOUBLE ID & 3 CC SLOTS**

| Style # | ID Size | Badge Width |
|---------|---------|-------------|
| 221-A | 3" x 5" | 2 3/4" |



**DUTY LEATHER BOOK STYLE DOUBLE ID CASE
W/ NON RECESSED BADGE FLAP**

| Style # | ID Size | Badge Width |
|---------|-----------------|-------------|
| 740 | 2 5/8" x 4" | 3" |
| 741 | 2 3/4" x 4 1/2" | 3" |
| 742 | 3" x 5" | 3" |



**DRESS LEATHER BOOK STYLE DOUBLE ID CASE
W/ NON RECESSED BADGE FLAP**

| Style # | ID Size | Badge Width |
|---------|-----------------|-------------|
| 743 | 2 3/4" x 4 1/4" | 3" |
| 744 | 3" x 5" | 3" |



DUTY LEATHER BOOK STYLE DOUBLE ID CASE*

| Style # | ID Size |
|---------|-----------------|
| 500 | 2 5/8" x 3 7/8" |
| 501 | 2 5/8" x 4" |
| 502 | 2 3/4" x 4 1/2" |
| 504 | 3" x 4 1/2" |
| 503 | 3" x 5" |
| 1000-ID | 3" x 4 3/4" |

*Shown with medallion and imprint on cover



**DUTY LEATHER BADGE CASE
W/ DOUBLE ID & CC SLOTS**

| Style # | ID Size | Badge Width |
|---------|-----------------|-------------|
| 1019 | 2 1/2" x 3 3/4" | 2 1/2" |
| 1009 | 3" x 4 7/8" | 2 3/4" |

BESTSELLER



DRESS LEATHER BOOK STYLE DOUBLE ID CASE

| Style # | ID Size |
|---------|-----------------|
| 505 | 2 1/4" x 3" |
| 507 | 2 3/4" x 4 1/4" |
| 506 | 2 3/4" x 4 1/2" |
| 508 | 3" x 5" |
| 509 | 3 1/8" x 5" |

BESTSELLER



RECESSED BELT CLIP BADGE HOLDER

| Style # | Description |
|---------|---------------------------------------|
| 716 | Velcro® closure |
| 716-PC | Velcro® closure, pocket and 30" chain |



RECESSED NECK BADGE HOLDER

| Style # | Description |
|---------|---|
| 719 | Inside pocket, Velcro® closure, & 30" chain |

MORE THAN 2400 BADGE CUTS AVAILABLE



RECESSED NECK BADGE & ID HOLDER W/ 30" CHAIN AND VELCRO® CLOSURE

| Style # | ID Size | Badge Width |
|---------|-----------------|-------------|
| 706-1 | 2 3/4" x 3 3/8" | 2 3/8" |
| 706-2 | 2 3/4" x 4 1/2" | 2 3/4" |
| 706-3 | 3" x 4 1/2" | 3" |
| 706-4 | 3" x 3 1/2" | 3 1/8" |



RECESSED NECK / BELT BADGE HOLDER W/ 30" CHAIN

| Style # | Badge Width |
|---------|-------------|
| 114 | 2 3/4" |



RECESSED BADGE HOLDER W/ BELT CLIP & 30" CHAIN

| Style # | Badge Width |
|---------|-------------|
| 721 | 2 3/8" |



DOUBLE ID NECK HOLDER W/ 30" CHAIN

| Style # | Max ID Size |
|---------|-----------------|
| 708 | 2 3/4" x 4 1/2" |

Available in vertical or horizontal

GET IT IN TAN

Select styles are available in tan leather.





**UNIVERSAL BADGE & ID HOLDER W/
MAGNETIC CLOSURE & 30" CHAIN**

| Style # | ID Size | Badge Width |
|---------|-----------------|-------------|
| 705-MH | 2 3/4" x 3 3/8" | 3" |
| 704-MH | 3 3/4" x 4 1/2" | 3" |



**UNIVERSAL NECK BADGE & ID HOLDER W/
30" CHAIN AND VELCRO® CLOSURE**

| Style # | ID Size | Badge Width |
|---------|-----------------|-------------|
| 705 | 2 3/4" x 3 1/4" | 3" |
| 704 | 3 3/4" x 4 1/2" | 3" |



**UNIVERSAL BADGE HOLDER
W/ MAGNETIC CLOSURE**

| Style # | Description |
|---------|---------------|
| MH | Square, no ID |



**UNIVERSAL NECK BADGE HOLDER
W/ 30" CHAIN**

| Style # | Description |
|---------|---------------|
| 700 | Oval / shield |
| 700-R | Round |



**UNIVERSAL BELT CLIP BADGE HOLDER
W/ VELCRO® CLOSURE**

| Style # | Description |
|----------|------------------------------------|
| 715-O | Oval |
| 715-O-PC | Oval with pocket and 30" chain |
| 715-T | Teardrop |
| 715-T-PC | Teardrop with pocket and 30" chain |
| 715-R | Round |
| 715-R-PC | Round with pocket and 30" chain |



**UNIVERSAL BELT CLIP BADGE HOLDER
W/ SNAP AND 30" CHAIN**

| Style # | Description |
|---------|-------------|
| 718-O | Oval |
| 718-T | Teardrop |
| 718-R | Round |



Pictured with plain finish

SAM BROWNE LEATHER BELT

| Style # | Width | Weight | Description |
|---------|-------|-----------|-------------------------|
| 8000 | 2 ¼" | 12-14 oz. | With plain finish |
| 8000-BW | 2 ¼" | 12-14 oz. | With basketweave finish |
| 8000-HG | 2 ¼" | 12-14 oz. | With high gloss finish |



Pictured with high gloss finish



Pictured with basketweave finish

**SAM BROWNE LEATHER BELT
W/ 4 ROW STITCHING**

| Style # | Width | Weight | Description |
|---------|-------|-----------|------------------------|
| 8001 | 2 ¼" | 12-14 oz. | With plain finish |
| 8001-HG | 2 ¼" | 12-14 oz. | With high gloss finish |

LEATHER RANGER BELT

| Style # | Width | Weight | Description |
|---------|-------|-----------|-------------------------|
| 8002 | 2 ¼" | 12-14 oz. | With plain finish |
| 8002-BW | 2 ¼" | 12-14 oz. | With basketweave finish |
| 8002-HG | 2 ¼" | 12-14 oz. | With high gloss finish |

The Sam Browne Belt
Shown with other Perfect Fit products



The Drum Dyed Difference

Drum-dyed leather has been dyed all the way through, instead of only on the surface. This helps prevent visible scratches and discolorations with age.

GARRISON BELT

| Style # | Width | Weight | Material |
|---------|--------|-------------|-------------------------------|
| 5001 | 1 3/4" | 8 - 10 oz. | Top grain, drum-dyed cow hide |
| 5004 | 1 3/4" | 10 - 12 oz. | Top grain, drum-dyed cow hide |
| 6001 | 1 3/4" | 8 oz. | Super Belt material |
| 5000 | 1 1/2" | 8 - 10 oz. | Top grain, drum-dyed cow hide |
| 5003 | 1 1/2" | 10 - 12 oz. | Top grain, drum-dyed cow hide |
| 6000 | 1 1/2" | 8 oz. | Super Belt material |
| 3000 | 1 1/4" | 8 - 10 oz. | Top grain, drum-dyed cow hide |
| 5002 | 1 1/4" | 10 - 12 oz. | Top grain, drum-dyed cow hide |
| 2000 | 1 1/4" | 8 oz. | Super Belt material |



Pictured with plain finish



Pictured with basketweave finish



Pictured with plain finish

VELCRO®-LINED BELT

| Style # | Width | Weight | Material |
|---------|--------|-------------|-------------------------------|
| 5999 | 1 1/2" | 8 - 10 oz. | Top grain, drum-dyed cow hide |
| 4999 | 1 1/2" | 10 - 12 oz. | Top grain, drum-dyed cow hide |
| 6999 | 1 1/2" | 8 oz. | Super Belt material |

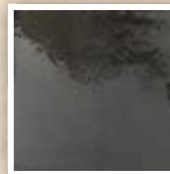
LEATHER BELT W/ 8" VELCRO® LINING

| Style # | Width | Weight | Material |
|---------|--------|-------------|-------------------------------|
| 7001 | 1 1/2" | 8 - 10 oz. | Top grain, drum-dyed cow hide |
| 7002 | 1 1/2" | 10 - 12 oz. | Top grain, drum-dyed cow hide |
| 7000 | 1 1/2" | 8 oz. | Super Belt material |

CUSTOMIZE YOUR BELT
CHOOSE FROM OUR SELECTION OF BUCKLES AND FINISHES



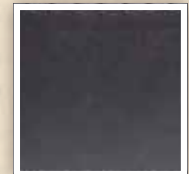
Black Solid Brass Chrome Brass Plated



High Gloss



Basketweave



Plain

MAKE IT A
PERFECT FIT



SILENT KEY HOLDER

| Style # | Description |
|---------|---|
| 794 | Available with silver, brass, or black snap |



KEY STRAP

| Style # | Description |
|---------|---|
| KS | Available with silver, brass, or black hardware |



KEY HOLDER W/ LEATHER BACK FLAP

| Style # | Description |
|---------|---|
| 750 | Available with silver, brass, or black hardware |



SOLID STEEL KEY CLIP

| Style # | Description |
|---------|------------------------|
| KC-B | Fits up to 2 1/4" belt |
| KC-C | Fits up to 2 1/4" belt |



KEY LEASH

| Style # | Description |
|---------|--------------------------------------|
| 555 | 13" long, 8-10 oz. top grain leather |
| 551 | 23" long, 8-10 oz. top grain leather |

Ideal for correctional officers



OPEN-TOP STRION & LED LIGHT HOLDER

| Style # | Description |
|---------|---|
| 831 | Fits Streamlight Strion |
| 831-L | Fits Streamlight Strion LED and Fenix TK 15 |



AA MINI FLASHLIGHT HOLDER

| Style # | Description |
|---------|---------------------------------|
| 802 | Open top mini flashlight holder |
| 802-A | With Velcro® top closure |



AA MINI FLASHLIGHT HOLDER

| Style # | Description |
|---------|---------------------------|
| 803 | Compact flashlight holder |



MINI FLASHLIGHT, PEN & PENCIL HOLDER

| Style # | Description |
|---------|--------------------------------------|
| 802-PH | Mini flashlight, pen & pencil holder |



LONG OPEN TOP AA MINI FLASHLIGHT HOLDER

| Style # | Description |
|---------|------------------------|
| 820 | Covers ¾ of flashlight |



COMPACT FLASHLIGHT HOLDER FOR MINI AA MAGLITE

| Style # | Description |
|---------|-----------------------|
| 895 | Holds mini AA Maglite |



OPEN TOP STINGER LIGHT HOLDER

| Style # | Description |
|---------|--|
| SLH | Fits regular metal Stinger |
| SLH-P | Fits Poly Stinger, XT Stinger, and metal LED stinger |



STREAMLIGHT STRION LIGHT HOLDER

| Style # | Description |
|---------|---|
| 305 | Fits Streamlight Strion and Surefire 6px and G2xLED |
| 305-L | Fits Streamlight Strion LED and Fenix TK 15 |

Available with silver, brass, black, or hidden style snap



CLOSED TOP STINGER HOLDER

| Style # | Description |
|---------|--|
| 808 | Fits metal Streamlight Stinger |
| 808-PS | Fits Poly or XT Stinger and Inova T4 LED |
| 808-L | Fits LED Stinger with dual switch, XT style |
| 609 | Fits LED Poly Stinger with dual switch, XT style |
| 608 | Fits Pelican light model 7060 |
| 610 | Fits Olight model M30 |

Available with silver, brass, black, or hidden style snap

CHOOSE YOUR FINISH

All items available in **plain black, basketweave, or high gloss.**



“D SIZE” FLASHLIGHT RING HOLDER

| Style # | Description |
|---------|--|
| 917 | Holds D cell flashlight Available with silver, brass, or black snap |



COMPACT FLASHLIGHT HOLDER

| Style # | Description |
|---------|--|
| 874 | Fits Strion, Strion LED, Streamlight PolyTac lights, and Fenix TK 15 |
| 875 | Fits regular metal Stinger and Inova T4 LED |
| 875-PS | Fits Poly, XT dual switch, and LED Stinger |

Available with belt slide or snap back



CLOSED TOP SCORPION & SUREFIRE 6P HOLDER

| Style # | Description |
|---------|--|
| 805 | Fits Scorpion & Surefire 6P Available with silver, brass, black, or hidden style snap |



MACE CANISTER HOLDER

| Style # | Description |
|---------|---|
| 822 | MK III 2 oz. canister |
| 823 | MK IV 3 oz. canister Available with silver, brass, black, or hidden style snap |



FLASHLIGHT & STRAIGHT BATON HOLDER

| Style # | Description |
|---------|-------------------------|
| 793-C | Holds C cell flashlight |
| 793-D | Holds D cell flashlight |
| 793-SB | Holds straight baton |



COMBO RING

| Style # | Description |
|---------|---|
| 717 | Holds C & D flashlight, straight baton Available with silver, brass, or black snap |



STRAIGHT BATON HOLDER

| Style # | Description |
|---------|----------------------|
| 711 | Holds straight baton |



BATON HOLDER

| Style # | Description |
|---------|----------------|
| 712 | With keeper |
| 712-A | Without keeper |

Available with silver, brass, or black snaps



OPEN TOP EXPANDABLE BATON HOLDER

| Style # | Description |
|---------|------------------------|
| 832 | Holds 16" baton |
| 833 | Holds 21" or 22" baton |
| 834 | Holds 26" baton |



**BIKINI HANDCUFF CASE
W/ BELT SLIDE OR BELT CLIP**

| Style # | Description |
|---------|---|
| 800-B | Bikini cuff case with belt slide / fits 2 ¼" belt |
| 800-C | Bikini cuff case with clip / fits 2" belt |
| 800-DC | Bikini cuff case with duty clip / fits 2 ¼" belt |

Available with silver, brass, or black snap



QUICK RELEASE HANDCUFF CASE

| Style # | Description |
|---------|------------------------------------|
| QRC | Fits standard handcuffs |
| QRC-O | Fits large and ASP style handcuffs |

Available with silver, brass, or black snap



OPEN TOP HANDCUFF CASE

| Style # | Description |
|---------|--|
| 799 | Fits standard, chain-link, or hinged handcuffs |

Available with silver, brass, or black snap



ECONOMY HANDCUFF CASE

| Style # | Description |
|---------|--|
| 801 | Fits standard, chain-link, or hinged handcuffs |
| 801-A | Deluxe handcuff case (not shown) |

Available with silver, brass, or black snap



CLOSED TOP HANDCUFF CASE

| Style # | Description |
|---------|------------------------|
| CC1101 | For standard handcuffs |
| CC1102 | For ASP handcuffs |

Available with silver, brass, or black snap



HANDCUFF STRAP

| Style # | Description |
|---------|-----------------|
| 811 | Fits all styles |

Available with silver, brass, black, or safety snap



UNIVERSAL RADIO HOLDER

| Style # | Description |
|---------|--|
| 815-B | Belt slide with elastic strap |
| 815 | Swivel radio holder with elastic strap |

Available with silver, brass, or black snap



UNIVERSAL ADJUSTABLE RADIO HOLDER W/ SWIVEL

| Style # | Description |
|---------|--|
| 816 | Radio holder with elastic on sides for compatibility |

Available with silver, brass, or black snap



MIC HOLDER W/ SNAP

| Style # | Description |
|---------|-----------------------|
| MIC | On the shoulder style |

Available with silver, brass, or black snap



ADJUSTABLE RADIO HOLDER

| Style # | Description |
|---------|--|
| 810 | Adjustable radio holder |
| 817 | Adjustable radio holder w/ shelf |
| 818 | Adjustable radio holder w/ shelf and elastic strap |

Available with silver, brass, or black snap



UTILITY CARRIER W/ BELT SLIDE

| Style # | Description |
|---------|------------------------------------|
| 703 | Size: 4" x 7" with Velcro® closure |



PAGER / GLOVE HOLDER

| Style # | Description |
|---------|-----------------|
| 707-B | With belt slide |
| 707-C | With clip |

Basketweave finish pictured. Other finishes are available.



LARGE GLOVE HOLDER W/ BELT SLIDE

| Style # | Description |
|---------|------------------------------------|
| 701-M | Size: 4" x 3" with Velcro® closure |



GLOVE HOLDER W/ BELT SLIDE

| Style # | Description |
|---------|------------------------------------|
| 701 | Size: 4" x 3" with Velcro® closure |



DOUBLE GLOVE HOLDER W/ BELT SLIDE

| Style # | Description |
|---------|------------------------------------|
| 702 | Size: 4" x 3" with Velcro® closure |



LARGE BELT KEEPER W/ GLOVE HOLDER

| Style # | Description |
|---------|-----------------------------|
| 804-G | Fits up to 2 1/4" duty belt |

Available with silver, brass, or black snaps



NY STYLE CHAIN

| Style # | Description |
|---------|-------------|
| NYCHAIN | Length: 20" |



BEADED CHAIN

| Style # | Description |
|---------|-------------|
| BC | Length: 30" |



PLASTIC INSERT

| Style # | Description |
|---------|---------------------------------|
| PI | Wallet sized plastic insert |
| PI-L | Check book sized plastic insert |



MOURNING BAND

| Style # | Description |
|---------|-------------------------|
| MRN | 3/4" black elastic band |



PAGER KEEPER

| Style # | Description |
|---------|------------------|
| PK | Fits 2 1/4" belt |



PEN & PENCIL HOLDER

| Style # | Description |
|---------|--------------------------------------|
| PH-2 | Pen and pencil holder with belt loop |



K-9 BADGE HOLDER

| Style # | Description |
|---------|-----------------------|
| K-9 | Holds mini K-9 badges |



CITATION BAR HOLDER

| Style # | Description |
|---------|-----------------------|
| 809 | Indicate 1 through 10 |

812



812-A



BADGE & NAMEPLATE HOLDER

| Style # | Description |
|---------|-------------|
| 812 | Standard |
| 812-A | "The Fish" |



**S.O.B. (SMALL OF BACK)
QUAD SNAP BELT KEEPER**

| Style # | Description |
|---------|--|
| 604 | Width: 3 1/2" Fits up to 2 1/4" duty belt |

Available with silver, brass, black, or hidden style snaps



BELT KEEPERS

| Style # | Description |
|---------|------------------------------|
| 804 | Width: 1" |
| 904 | Width: 3/4" |
| 804-V | Width: 1" w/ Velcro® closure |

Available with silver, brass, black, or hidden style snaps

807

807-A

200-S



KEY FOB

| Style # | Description |
|---------|---|
| 807 | Recessed for mini badge with imprint Many imprints available; call for details |
| 807-A | Recessed for mini badge |
| 200-S | Universal with snap closure Badge not included |



**BELT KEEPER W/
HIDDEN SNAP AND KEY HOLDER**

| Style # | Description |
|---------|--|
| 1104 | Width: 1" Fits up to 2 1/4" duty belt |



CHECK BOOK COVER

| Style # | Description |
|---------|------------------|
| CBC | Check book cover |

Shown with medallion on cover



MINI BADGE & ID HOLDER

| Style # | ID Size | Badge Width |
|---------|-------------|-------------|
| 100-ML | 2 5/8" x 4" | 2 3/4" |

Many imprints available; badge not included



DUTY LEATHER CASE W/ DOUBLE POCKET

| Style # | Description |
|---------|------------------------------------|
| 123 | Duty leather case w/ double pocket |



TICKET BOOK HOLDER

| Style # | Description |
|---------|------------------------------|
| 135 | Fits 3" x 4" book |
| 135-A | Fits 3" x 5" book |
| TB | Fits 4" x 7" book |
| TB-O | Oversized ticket book holder |

CELL PHONE CASES

CELL PHONE CASE

| Style # | Description |
|---------|--|
| 887-B | RAZR Cell Phone Case with Belt Slide |
| 888-B | Flip Cell Phone Case with Belt Slide |
| 889-B | Straight Style Cell Phone Case with Belt Slide |
| 890-B | Cell Phone Case for Blackberry or iPhone with Belt Slide |
| 891-B | Rubber Blackberry Cell Phone Case with Belt Slide |
| 892-B | Droid Cell Phone Case with Belt Slide |
| 893-B | Droid X / iPhone 4 Case with Belt Slide |
| 894-B | Samsung Smartphone Case with Belt Slide |
| 896-B | Galaxy S3-S4 Case with Belt Slide |
| 897-B | iPhone 6 Plus and Galaxy Note 4 (with OtterBox) Case with Belt Slide |

Please indicate duty clip or belt slide up to 2 1/4"



NYLON DUTY BELTS

2 ¼" NYLON OUTER DUTY BELT

| Style # | Description |
|--------------|------------------------------------|
| NDB-1-[size] | Indicate size: SM, MD, LG, XL, XXL |

Our extra strong nylon duty belts are made from an outer layer of extra strength nylon webbing that is then backed with polymer and attached to a loop material that connects firmly to the nylon welting, providing a comfortable fit. Our belts are more than strong enough to hold the many items required by today's officers.

- Extra strong nylon construction
- Nylon webbing backed by polymer
- Nylon welting for an extra comfortable fit
- Grab resistant polymer buckle features a 3 point release for added security
- Buckle design prevents accidental opening



1 ¾" INNER DUTY BELT

| Style # | Description |
|--------------|------------------------------------|
| NIB-1-[size] | Indicate size: SM, MD, LG, XL, XXL |

Our Inner Duty Belts are similar in construction to our Outer Duty Belts. These belts have an outer surface of nylon hook material that fastens firmly to the Outer Belt.

- Sturdy nylon construction
- Nylon hook material fastens securely to Outer Belt



NYLON BELT KEEPERS

| Style # | Description |
|---------|-------------|
| 804-N | 1" wide |

Prevent shifting and keep your Inner and Outer Belts in line with our Nylon Belt Keepers. The no-fray design features two black glare-free snaps that lock your belts in place at all times, even with heavy gear and intense activity. Sold in sets of four.



**KEY HOLDER W/
NYLON BACK FLAP**

| Style # | Description |
|---------|------------------------------------|
| 750-N | Back flap protects pants from keys |



NYLON KEY STRAP

| Style # | Description |
|---------|--------------------|
| KS-N | 1" Nylon key strap |



**NYLON "D SIZE" FLASHLIGHT
RING HOLDER**

| Style # | Description |
|---------|-------------------------|
| 917-N | Holds D cell flashlight |



**NYLON COMPACT
FLASHLIGHT HOLDER**

| Style # | Description |
|----------|---|
| 875-N | Fits regular metal Stinger and Inova T4 LED |
| 875-PS-N | Fits Poly, XT dual switch, and LED Stingers |
| 874-N | Fits Strion, Strion LED, Streamlight PolyTac, and Fenix TK 15 |

Available with belt slide or snap back



**NYLON OPEN-TOP
STRION OR LED HOLDER**

| Style # | Description |
|---------|---|
| 831-N | Fits Streamlight Strion |
| 831-L-N | Fits Streamlight Strion LED and Fenix TK 15 |



**NYLON CLOSED TOP
STINGER HOLDER**

| Style # | Description |
|----------|--|
| 808-N | Fits metal Streamlight Stinger |
| 808-PS-N | Fits Poly or XT Stinger, and Inova T4 LED |
| 808-L-N | Fits LED Stinger with dual switch, XT style |
| 609-N | Fits LED Poly Stinger with dual switch, XT style |
| 608-N | Fits Pelican light model 7060 |
| 610-N | Fits Olight model M30 |



**NYLON CLOSED TOP SCORPION
& SURE FIRE 6P HOLDER**

| Style # | Description |
|---------|---|
| 805-N | Closed top Scorpion & Sure Fire 6P holder |



**NYLON STREAMLIGHT
STRION HOLDER W/ SNAP**

| Style # | Description |
|---------|---|
| 305-N | Fits Streamlight Strion and Surefire 6px and G2xLED |
| 305-L-N | Fits Streamlight Strion LED and Fenix TK 15 |



MACE CANISTER HOLDER

| Style # | Description |
|---------|----------------------------|
| 822-N | Fits MK III 2 oz. canister |
| 823-N | Fits MK IV 3 oz. canister |



NYLON EXPANDABLE BATON HOLDER

| Style # | Description |
|---------|------------------------|
| 832-N | Holds 16" baton |
| 833-N | Holds 21" or 22" baton |
| 834-N | Holds 26" baton |



NYLON GLOVE HOLDER W/ BELT SLIDE

| Style # | Description |
|---------|------------------------------|
| 701-N | 4" x 3" with Velcro® closure |



NYLON DOUBLE GLOVE HOLDER W/ BELT SLIDE

| Style # | Description |
|---------|------------------------------|
| 702-N | 4" x 3" with Velcro® closure |



NYLON HANDCUFF STRAP

| Style # | Description |
|---------|---|
| 811-N | Fits all styles Shown with safety snap |



NYLON CUFF CASE W/ BELT SLIDE

| Style # | Description |
|---------|-------------------------------|
| 806-N | Double nylon cuff case |
| 906-N | Single nylon cuff case |
| 909 | Fits leg irons (not pictured) |



NYLON ECONOMY CUFF CASE W/ BELT SLIDE

| Style # | Description |
|---------|--------------------------------------|
| 907-N | Fits chain link handcuffs |
| 908 | Fits chain link and hinged handcuffs |



NYLON UNIVERSAL RADIO HOLDER

| Style # | Description |
|---------|--------------------------------------|
| 815-B-N | Belt slide w/elastic strap |
| 815-N | Swivel radio holder w/ elastic strap |



NYLON RADIO HOLDER

| Style # | Description |
|---------|---|
| 818-N | Nylon radio holder w/ shelf and elastic strap |



NYLON UNIVERSAL ADJUSTABLE RADIO HOLDER W/ SWIVEL

| Style # | Description |
|---------|--|
| 816-N | Nylon radio holder w/ elastic on sides for compatibility |

Nylon items feature black snaps only. Hidden snaps available on some items.



BELT SLIDE RADIO HOLDER

| Style # | Description |
|----------|---------------------------------|
| 815-FM-B | With elastic straps and D rings |



ADJUSTABLE RADIO HOLDER

| Style # | Description |
|---------|---------------------------------------|
| 818-R | With shelf, elastic strap and D rings |



FIREFIGHTER RADIO STRAP

| Style # | Description |
|---------|---------------------------------|
| 9000 | 1 1/4" firefighter radio strap |
| 9000-R | 1 1/4" with reflective material |



ANTI-SWAY STRAP FOR FIREFIGHTER RADIO

| Style # | Description |
|---------|--|
| 9001 | 3/4" anti-sway strap for firefighter radio |
| 9001-R | 3/4" with reflective material |



REFLECTIVE BELT



PERFECT FIT REFLECTIVE FINEST LEATHER BELT

| Style # | Description |
|---------|--|
| 5003-CH | With chrome buckle and reflective material |

Available in all widths



Embroidery Options:



PERFECT FIT BARREL BAG

| Style # | Description |
|---------|---|
| 0046 | <p>The Perfect Fit Barrel Bag is constructed with 600 polyester / nylon with a PVC backing, two sturdy web handles and a large interior. The PVC backing helps the bag keep its shape and also makes it water resistant.</p> <ul style="list-style-type: none"> • Water resistant • Large interior • Web handles • Heavy duty zippers • Extra strength Nylon strapping • Size 20" x 9.25" |

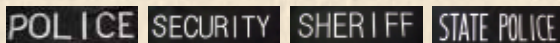


PERFECT FIT SEAT ORGANIZER

| Style # | Description |
|---------|--|
| 0088 | <p>The Perfect Fit Seat Organizer is constructed of 600 denier polyester / nylon with a PVC backing. It features an adjustable strap that secures the organizer to the headrest and also can be used as a shoulder strap. There is plenty of room for your radio, cell phone and clip boards. Large open top pockets hold water bottles and a thermos. Fits flat against car seat.</p> <ul style="list-style-type: none"> • Main compartment plus additional zippered compartment • Adjustable strap • Pen / pencil holders • Beverage holders • Radio holder • Identification holder • Size 17.5" x 13" x 2.5" |



Embroidery Options:



BESTSELLER

PERFECT FIT DUTY BAG

| Style # | Description |
|---------|--|
| 0081 | <p>The Perfect Fit Duty Bag is constructed with heavy duty 1680 denier, water resistant nylon with a PVC backing, heavy duty zippers and removable shoulder strap. The large interior compartment features an adjustable divider and rigid bottom, two zippered cargo pockets and six pen / pencil holders. The exterior has two zippered cargo pockets, two flip top pockets, and three open top pockets.</p> <ul style="list-style-type: none"> • Large side pockets • Pen and pencil holders • Exterior pockets for ticket book, flashlight, radio and expandable baton • Identification holder on front • Adjustable interior divider • Hidden Velcro® top pocket for customizing • Removable padded shoulder strap • Size 24" x 10" x 12" • Stitching Options: Police, Security, Sheriff and State Police. |
| 0081-E | <p>Our most popular duty bag has all the same features as our regular duty bag (#0081), with the addition of a removable top which can be custom embroidered with your local agency or department logo.</p> <ul style="list-style-type: none"> • Removable top for custom embroidery |

FEDERAL STYLE WALLETS



FEDERAL SIZE BADGE WALLET W/ DOUBLE ID

| Style # | ID Size | Badge Width |
|---------|---------|-------------|
| DK882 | 3" x 5" | 3" |



ELITE BADGE WALLET W/ DOUBLE ID

| Style # | ID Size | Badge Width |
|---------|-----------------|-------------|
| DK652 | 2 3/4" x 4 1/2" | 2 3/4" |



HIDDEN BADGE WALLET W/ DOUBLE ID

| Style # | ID Size | Badge Width |
|---------|-------------|-------------|
| DK539 | 3" x 4 1/4" | 2 3/4" |
| DK540 | 3" x 5" | 2 7/8" |



SUPREME HIDDEN BADGE & ID WALLET

| Style # | ID Size | Badge Width |
|---------|-----------------|-------------|
| DK450 | 2 3/8" x 3 3/4" | 2 7/8" |



HIDDEN BADGE & ID WALLET

| Style # | ID Size | Badge Width |
|---------|-----------------|-------------|
| DK439 | 2 5/8" x 3 3/4" | 2 3/4" |
| DK440 | 2 3/4" x 4 1/8" | 3" |



BADGE & ID CASE

| Style # | ID Size | Badge Width |
|---------|-----------------|-------------|
| DK70 | 2 1/2" x 4 1/4" | 2 3/8" |
| DK71 | 2 7/8" x 4 1/4" | 3" |
| DK72 | 3" x 4 3/4" | 2 7/8" |



COMPACT BADGE & ID WALLET

| Style # | ID Size | Badge Width |
|---------|-----------------|-------------|
| DK66 | 2 5/8" x 3 1/4" | 2 3/4" |



DELUXE WIDE BADGE & ID WALLET

| Style # | ID Size | Badge Width |
|---------|-----------------|-------------|
| DK460 | 2 1/2" x 3 1/2" | 3 3/8" |



TRADITIONAL TRI-FOLD BADGE WALLET

| Style # | ID Size | Badge Width |
|---------|-----------------|-------------|
| DK98 | 2 7/8" x 4 1/8" | 2 7/8" |



UNIVERSAL TRI-FOLD NYLON WALLET

| Style # | ID Size | Badge Width |
|---------|-----------------|-------------|
| DKN50 | 2 1/2" x 3 5/8" | 3 3/4" |



HIDDEN BADGE & ID WALLET

| Style # | ID Size | Badge Width |
|---------|-----------------|-------------|
| DK439 | 2 5/8" x 3 3/4" | 2 3/4" |
| DK440 | 2 3/4" x 4 1/8" | 3" |



SUPREME HIDDEN LADIES BADGE & ID WALLET

| Style # | ID Size | Badge Width |
|---------|-------------|-------------|
| DK4413 | 2 1/2" x 4" | 2 1/2" |



UNIVERSAL BELT / NECK BADGE HOLDER

| Style # | Description |
|-----------|--|
| DK512V-O | Oval with Velcro® closure |
| DK512V-R | Round with Velcro® closure |
| DK512V-T | Teardrop with Velcro® closure |
| DK512CH-O | Oval with 30" chain and snap closure |
| DK512CH-R | Round with 30" chain and snap closure |
| DK512CH-T | Teardrop with 30" chain and snap closure |

Also available in tan leather

RECESSED BELT CLIP BADGE HOLDER

| Style # | Description |
|---------|-------------------------------------|
| DK612 | Full Velcro® closure |
| DK612CH | Full Velcro® closure with 30" chain |

Also available in tan leather



PAD STYLE NOTEBOOK HOLDER

| Style # | Description |
|---------|--|
| DK88 | 3" x 5" Paper • Pad Style • Customizable |
| DK90 | 4" x 6" Paper • Customizable |

Shown with medallion on cover



BOOK STYLE NOTEBOOK HOLDER

| Style # | Description |
|---------|---|
| DK89 | 3" x 5" Paper • Book Style • Customizable |



SYNTHETIC LEATHER TACTICAL GLOVES WITH CUT RESISTANT SPECTRA®

| Style # | Description |
|---------------|---|
| PFU-15-[size] | <ul style="list-style-type: none"> • Synthetic leather provides extreme grip and natural feel • Great for wet and dry weather • Full Spectra® lining is more effective than Kevlar® • Lycra added for stretch and ventilation • Velcro® closure maintains a snug fit |

NEOPRENE / LEATHER ALL WEATHER CUT RESISTANT KEVLAR® LINED DUTY GLOVES

| Style # | Description |
|---------------|---|
| PFU-14-[size] | <ul style="list-style-type: none"> • All weather duty gloves with 100% Kevlar® lining on palm area help protect against razors, glass, knives and other sharp objects • Neoprene repels the elements • Super grip between the thumb and first finger • Velcro® closure maintains snug fit |

TOUCHSCREEN GLOVES



TOUCHSCREEN GLOVES

| Style # | Description |
|---------------|--|
| PFU-12-[size] | <ul style="list-style-type: none"> • Touchscreen material on index and thumb • Thin dress leather on palm • Nylon Lycra on back of hand • Neoprene cuff • Velcro® strap closure |



NEOPRENE UNLINED ALL WEATHER DUTY SHOOTING GLOVES

| Style # | Description |
|--------------|--|
| PFU-1-[size] | <ul style="list-style-type: none"> • Super-Tacky™ synthetic leather palm • SureGrip® non-slip material on fingertips (except index) and palm strategically placed for best weapon control • Full Neoprene back palms • Velcro® closure assures a snug, comfortable fit • Machine washable |



NEOPRENE ALL WEATHER KEVLAR® LINED DUTY GLOVES

| Style # | Description |
|--------------|--|
| PFU-2-[size] | <ul style="list-style-type: none"> • All weather duty gloves with Heavy Duty 100% Kevlar® cut-slash resistant lining • Excellent year-round glove for general duty-wear, especially in wet weather • Super thin Neoprene back repels the elements • Super-Tacky™ synthetic leather palm provides excellent grip & feel • Reinforced SureGrip® patches on the palm, middle, ring, and little finger for maximum grip • Velcro® closure maintains a snug fit |



NEOPRENE DUTY GLOVES WITH 3M THINSULATE™ LINING

| Style # | Description |
|--------------|---|
| PFU-3-[size] | <ul style="list-style-type: none"> • Full Neoprene back • 40 grams of Thinsulate™ lining • SensiFeel® synthetic leather palms • SureGrip® patches on palm and four fingers • Great fit without the bulk • Elastic cuff with Velcro® closure |



NEOPRENE ALL WEATHER SPECTRA® LINED DUTY GLOVES

| Style # | Description |
|--------------|--|
| PFU-4-[size] | <ul style="list-style-type: none"> • All weather durability even in wet conditions • 100% Spectra® cut protective lining for best protection • Durable Neoprene back • SensiFeel® synthetic leather palm for optimum sensitivity and dexterity • SureGrip® non-slip material on fingers (except index) for increased grip • Washable & breathable synthetic leather outer shell • Adjustable Velcro® closure for secure fit |



“THE-THIN” UNLINED OFFICER DRESS DUTY GLOVE

| Style # | Description |
|--------------|---|
| PFU-5-[size] | <ul style="list-style-type: none"> • Full grain cowhide leather • Treated water repellent leather outer shell • Unlined • Smooth feel |



MAX CUT RESISTANCE LEATHER GLOVE WITH 100% SPECTRA® POLYETHYLENE FIBER LINING

| Style # | Description |
|--------------|---|
| PFU-6-[size] | <ul style="list-style-type: none"> • Premium cowhide leather shell • Spectra® lining offers twice the cut, slash and abrasion resistance of aramid yarn liner in same weight • Wrist length elasticized cuff |



MAX CUT RESISTANCE SPECTRA® LINED LEATHER GLOVES WITH SHORT CUFF

| Style # | Description |
|---------------|--|
| PFU-6X-[size] | <ul style="list-style-type: none"> • Supple, premium grade water repellent treated cowhide leather shell • Spectra® offers twice the cut resistance of Kevlar® of the same weight • CE Safety Standard EN388 Levels: Tear:4 Blade-Cut:2 Puncture:3 Abrasion:2 • Short-length cuff with elasticized wrist |



TACTICAL 24/7 GLOVE

| Style # | Description |
|--------------|---|
| PFU-7-[size] | <ul style="list-style-type: none"> • Leather padded palm • Padded joints on fingers • Spandex on back of hand • Velcro® strap closure |



HIGH VISIBILITY GLOVE

| Style # | Description |
|--------------|--|
| PFU-8-[size] | <ul style="list-style-type: none"> • Ideal for public safety professionals • Worn to be noticed • 3M reflective strips • Lime green color • 65% polyester 35% cotton blend • Silicone grip on palm and thumb |



LEATHER DUTY GLOVES WITH HIPORA® BARRIERS

| Style # | Description |
|--------------|---|
| PFU-9-[size] | <ul style="list-style-type: none"> • Hipora® breathable, fluid proof membrane sewn into a premium cowhide leather shell • Meets the O.S.H.A. Bloodborne Pathogens Standard • Protects hands from deadly micro-organisms • A must for Law Enforcement, Corrections and EMS personnel |



LEATHER CUT RESISTANT STREET AND SEARCH GLOVE LINED WITH 100% KEVLAR® YARN

| Style # | Description |
|---------------|---|
| PFU-10-[size] | <ul style="list-style-type: none"> • Genuine drum-dyed cowhide leather shell • Heavy Duty 100% knitted Kevlar® cut resistant liner • Popular "shorty" slip-on design |

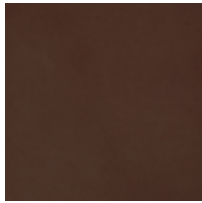


EXTREME TACTICAL GLOVES

| Style # | Description |
|---------------|--|
| PFU-11-[size] | <ul style="list-style-type: none"> • Carbon fiber knuckles • Full Spectra® lining for added protection • Full leather palm with rubber for added protection |



BASKETWEAVE



BROWN LEATHER



HIGH GLOSS LEATHER



DUTY LEATHER / FRAMED WINDOW



DRESS LEATHER / TURNED EDGES



NYLON



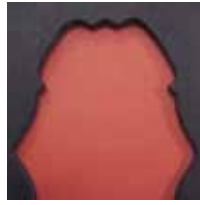
BLIND STAMP



SILVER IMPRINTED



GOLD IMPRINTED



RECESSED BADGE



GLUE-IN FLAT BADGE



PINBACK / WASHERS



CLIP
Fits up to 1 3/4"



DUTY CLIP
Fits up to 2 1/4"



BELT SLIDE
Fits up to 2 1/4"



BONTEX®



NAME PLATE



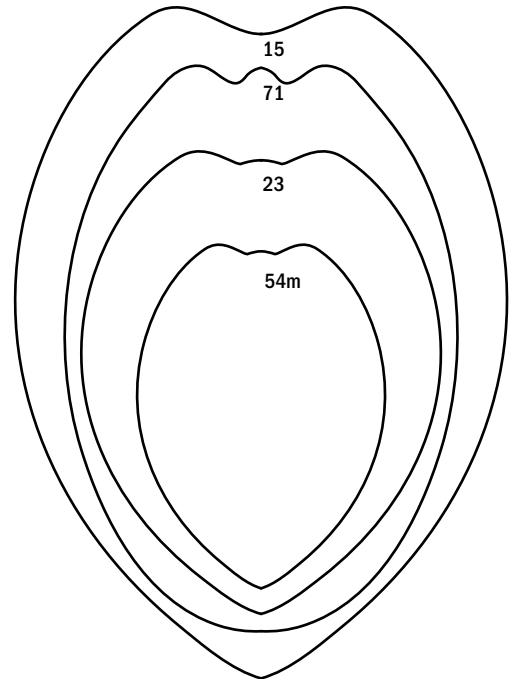
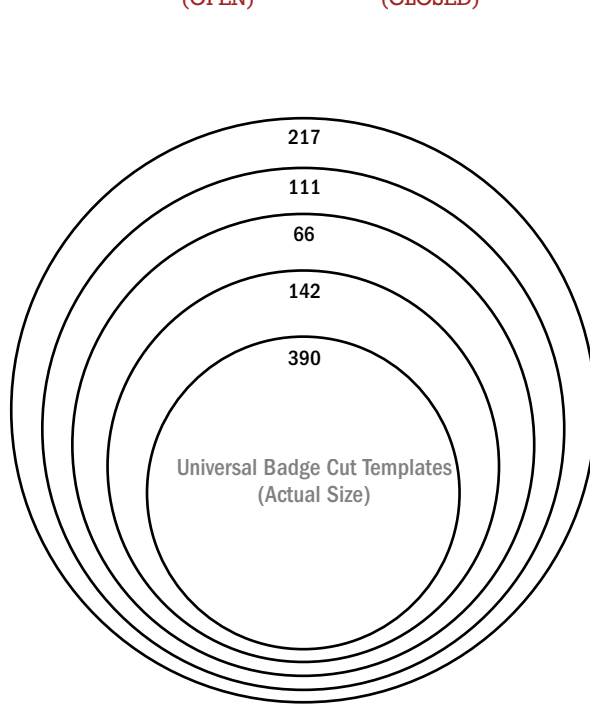
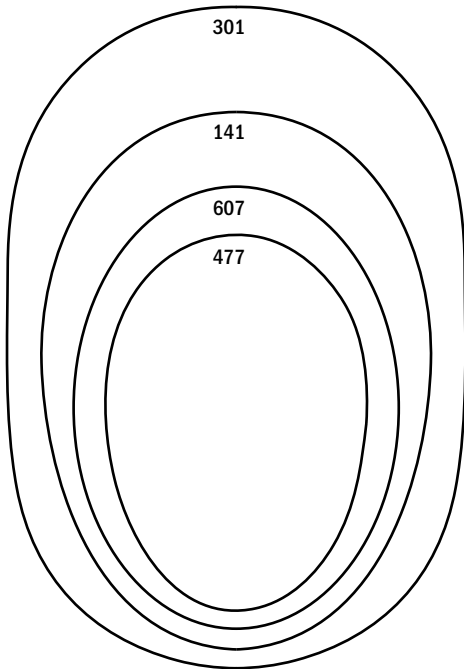
PINBACK



HIDDEN SNAP (OPEN)



HIDDEN SNAP (CLOSED)



YOUR BADGE DESERVES A PERFECT FIT.

PERFECT FIT SHIELD WALLETS®

D&K
Badge Wallets & Accessories

ARMOR FLEX
GLOVES

Phone: 800-634-9208

Fax: 800-222-0417

Web: www.perfectfitusa.com

Email: info@perfectfitusa.com

