

RI*IDGE* *FOOTWEAR*

2018 CATALOG



OUR STORY

Over twenty years ago, Ridge Footwear created a performance footwear brand that offers quality, style, function, and value. In 1996, we launched with 9 new models designed for sportsmen and public safety personnel. Within a few short years, we narrowed our focus exclusively on the public safety sector to meet the needs of police, fire, and medical personnel. Since then, we've expanded our footwear collection, developed our own Made In USA socks, and created the unique and popular concealment undergarment, the Ridge Packin' Tee®.

Since our inception, Ridge Footwear has always made it our #1 priority to provide our customers with first class customer service, top quality, and a wide variety of products to meet the needs of tactical and public safety personnel. We thank you for your business and continued support.

WHAT'S NEW FOR 2018

Introducing the Ridge Momentum (pp. 3-4). Built for dynamic movement, the all-new Momentum boots are designed with an athletic, streamlined style. The form-fitting design reduces bulk and weight, adding greater stability and performance. Available in two models, an 8" tactical boot and a 6" mid-cut boot, the Momentum is our lightest boot ever, featuring tough and breathable leather and nylon uppers, debris-shedding high performance outsoles, and a 90 degree heel design, built for braking during rapid descents and ladder climbing. See the entire line-up of the Momentum's athletic-inspired, performance-enhancing features on page 3.



INTRODUCING
MOMENTUM
SEE PAGES 3-4

CONTENTS

1	OUR STORY
2	SYMBOL GLOSSARY
3	MOMENTUM TECHNOLOGY
4	MOMENTUM SERIES
5	THE ULTIMATE TECHNOLOGY
6	THE ULTIMATE
7-8	AIR-TAC SERIES
9-10	DURA-MAX SERIES
11	DESERT STORM & OXFORD LITE GLOSS
12	NIGHTHAWK SERIES
13	SAFETY TOE SERIES
14	MAX-PRO SERIES
15-16	PACKIN' TEE
17	SOCKS
18	POLICIES & PROCEDURES

SYMBOL GLOSSARY



WATERPROOF
WATERPROOF MEMBRANE
CONSTRUCTION KEEPS WATER OUT



BLOODBORNE PATHOGEN RESISTANT
ASTM F1671 CERTIFIED FOR
BLOODBORNE PATHOGEN RESISTANCE



YKK® SIDE-ZIPPER
EASY ON AND OFF WITH HOOK & LOOP
ZIPPER KEEPER



SAFETY TOE
ASTM F1671 CERTIFIED STEEL OR COMPOSITE
SAFETY TOE RESISTS OVER 200 JOULES OF
IMPACT FORCE



PUNCTURE RESISTANT
ASTM F1671 CERTIFIED PUNCTURE RESISTANT
WELLMAX FOOT BED KEEPS YOUR FEET SAFE
FROM SOLE PUNCTURES



SLIP RESISTANT
OUTSOLES RESIST SLIPPING ON DRY OR
WET SURFACES



ELECTRICAL HAZARD RESISTANT
OUTSOLES RESIST ELECTRICAL SHOCK



OIL RESISTANT
OUTSOLES ARE RESISTANT TO PREMATURE
BREAKDOWN DUE TO OIL-BASED PRODUCTS



METAL DETECTOR FRIENDLY
NON-METALLIC BOOT MAKES WORKING
AROUND METAL DETECTORS WORRY-FREE

MOMENTUM

CONSTRUCTION FEATURES

1. LIGHTWEIGHT TEAR-RESISTANT HI - LITE MESH – HIGH BREATHABILITY, TOUGH AND DURABLE CONSTRUCTION, KEEPS FEET COOL IN TENSE SITUATIONS
2. YKK FULL LENGTH ZIPPER W/ HOOK & LOOP ZIPPER KEEPER FOR EASY ON/OFF
3. NYLON LOOP SPEED LACING
4. DURABLE, FULL GRAIN LEATHER POLISHABLE TOE BOX (ONLY AVAILABLE ON MODEL#5008)
5. BREATHABLE MESH TOE BOX WITH AN ABRASION RESISTANT TOE CAP (ONLY AVAILABLE ON MODEL#5006)
6. 90 DEGREE HEEL FOR BRAKING IN RAPID DESCENTS & LADDER CLIMBING
7. REMOVABLE INSOLE
8. CUSHIONING EVA MIDSOLE
9. LIGHTWEIGHT COMPOSITE SHANK FOR TORSIONAL SUPPORT
10. RUBBER SLIP/OIL RESISTANT OUTSOLE
11. MEDIAL SIDE GRIP ARCH FOR FAST-ROPING & CLIMBING
12. OPEN LUG OUTSOLE PATTERN FOR EASY CLEAN

Introducing the **RIDGE MOMENTUM**, built on an athletic last for speed, extreme light weight, and streamlined fit and performance. Designed for dynamic movement, the all-new Momentum boots are our lightest weight boots ever. The form-fitting design reduces bulk and weight, adding greater stability and performance.





MOMENTUM 8" MODEL #5008

SPECS

HEIGHT: 8" WEIGHT: 17 OZ. COLOR: BLACK
 SIZE: REG.(D) 4-11.5, 12-15, WIDE (EE) 7-11.5, 12-15
 FULL GRAIN LEATHER TOE BOX/BREATHABLE HI - LITE MESH
 TRIPLE/DOUBLE STITCHING
 NYLON LOOP SPEED LACING
 YKK FULL LENGTH ZIPPER W/ HOOK & LOOP ZIPPER KEEPER
 REMOVABLE INSOLE
 COMPOSITE SHANK
 EVA MIDSOLE
 RUBBER OUTSOLE
 OIL & SLIP RESISTANT



**MOMENTUM. Athletic,
streamlined styling designed
for dynamic movement.**



MOMENTUM MID 6" MODEL #5006

SPECS

HEIGHT: 6" WEIGHT: 15 OZ. COLOR: BLACK
 SIZE: REG.(D) 4-11.5, 12-15, WIDE (EE) 7-11.5, 12-15
 BREATHABLE HI - LITE MESH
 TRIPLE/DOUBLE STITCHING
 NYLON LOOP SPEED LACING
 YKK FULL LENGTH ZIPPER W/HOOK & LOOP ZIPPER KEEPER
 REMOVABLE INSOLE
 COMPOSITE SHANK
 EVA MIDSOLE
 RUBBER OUTSOLE
 OIL & SLIP RESISTANT



THE ULTIMATE CONSTRUCTION FEATURES

1. ANTI-MICROBIAL, HIGH PRESSURE EVA CUSHIONED REMOVABLE INSOLE
2. SHOCK ABSORBING PORON V PADDING
3. AIR & GEL SHOCK ABSORBING HEEL FOR ALL DAY COMFORT
4. POLYURETHANE MIDSOLE
5. COMPOSITE SHANK
6. ACTIVE POLYMER V ARCH SUPPORT
7. 1A CARBON RUBBER SLIP/OIL/STATIC RESISTANT OUTSOLE
8. YKK FULL LENGTH ZIPPER W/ HOOK & LOOP ZIPPER KEEPER FOR EASY ON/OFF
9. DRI-LEX WATERPROOF MEMBRANE
10. COMPOSITE HOOK & EYELET SPEED LACING FOR EASY ADJUSTABILITY
11. SEAM SEALED TRIPLE/DOUBLE STITCHING
12. FULL GRAIN LEATHER POLISHABLE TOE BOX



ULTIMATE 8" **MODEL #9000**

SPECS

HEIGHT: 8" WEIGHT: 25 OZ. COLOR: BLACK
SIZE: REG.(D) 4-11.5, 12-14, WIDE (E) 7-11.5, 12-14
FULL GRAIN LEATHER TOE BOX/RIPSTOP NYLON
SEAM SEALED TRIPLE/DOUBLE STITCHING
COMPOSITE HOOK & EYELET SPEED LACING
YKK FULL LENGTH ZIPPER W/ HOOK & LOOP ZIPPER KEEPER
DRI-LEX WATERPROOF MEMBRANE
ANTI-MICROBIAL REMOVABLE INSOLE/PORON PADDED FOOTBED
COMPOSITE SHANK
PU MIDSOLE
1A CARBON RUBBER OUTSOLE
AIR & GEL SHOCK ABSORBING HEEL
OIL, SLIP & STATIC RESISTANT

WATERPROOF



The **ULTIMATE** in performance
and technology. Built to handle
any situation, all conditions.

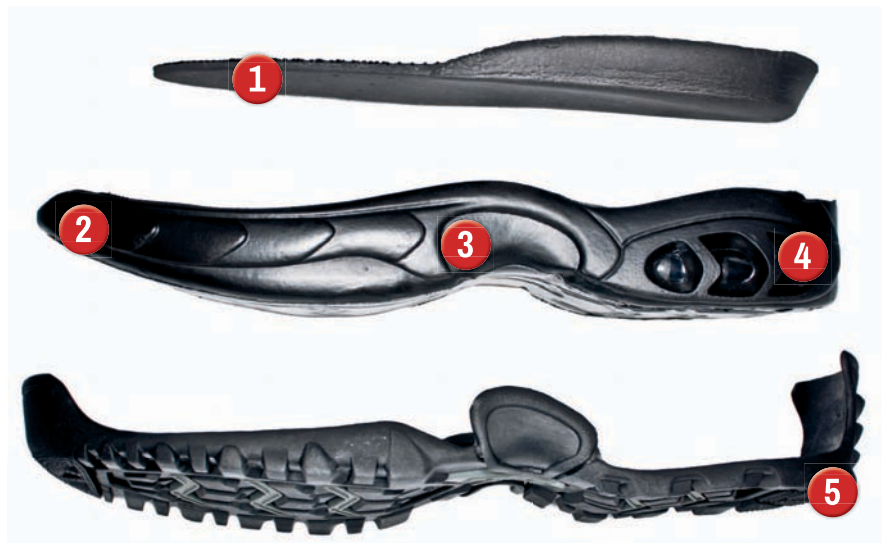


NEW GENERATION CONSTRUCTION FEATURES

1. EVA REMOVABLE INSOLE
2. POLYURETHANE MIDSOLE
3. COMPOSITE SHANK
4. DUAL AIR CHAMBER HEEL SUPPORT FOR ALL-DAY COMFORT
5. 1-A CARBON RUBBER NEW GENERATION OUTSOLE

AVAILABLE MODELS

- #8003 6" MID ZIPPER
- #8003ALWP 6" MID ZIPPER (WATERPROOF)
- #8003ST 6" MID ZIPPER (STEEL TOE)
- #8010 8" GHOST ZIPPER
- #8010ST 8" GHOST ZIPPER (STEEL TOE)



AIR-TAC GHOST

MODEL #8010

SPECS

HEIGHT: 8" WEIGHT: 22 OZ. COLOR: BLACK
 SIZE: REG.(D) 4-11.5, 12-15, WIDE (EE) 7-11.5, 12-15
 FULL GRAIN LEATHER TOE BOX/RIPSTOP NYLON
 BLOUSE-TAC INNER COLLAR (KEEPS SOCKS UP & BLOUSED PANTS IN)
 TRIPLE/DOUBLE STITCHING
 NYLON LOOP SPEED LACING
 YKK FULL LENGTH CURVED ZIPPER W/ HOOK & LOOP ZIPPER KEEPER
 VAPOR WICK LINING
 REMOVABLE INSOLE
 COMPOSITE SHANK
 PU MIDSOLE
 1A CARBON RUBBER OUTSOLE
 NEW GENERATION AIR HEEL SYSTEM
 SLIP RESISTANT



**Air-Tac. With proprietary
New Generation Air Heel System
for all-day lightweight comfort
and support.**





AIR-TAC MID 6"
MODEL #8003
SPECS

HEIGHT: 6" WEIGHT: 21 OZ. COLOR: BLACK
 SIZE: REG.(D) 4-11.5, 12-15, WIDE (EE) 7-11.5, 12-15
 FULL GRAIN LEATHER TOE BOX/RIPSTOP NYLON
 TRIPLE/DOUBLE STITCHING
 EYELET AND HOOP SPEED LACING
 YKK FULL LENGTH ZIPPER W/ HOOK & LOOP ZIPPER KEEPER
 VAPOR WICK LINING
 REMOVABLE INSOLE
 COMPOSITE SHANK
 PU MIDSOLE
 1A CARBON RUBBER OUTSOLE
 NEW GENERATION AIR HEEL SYSTEM
 SLIP RESISTANT



AIR-TAC MID ALL LEATHER
WATERPROOF 6"
MODEL #8003ALWP
SPECS

HEIGHT: 6" WEIGHT: 23 OZ. COLOR: BLACK
 SIZE: REG.(D) 4-11.5, 12-15, WIDE (EE) 7-11.5, 12-15
 FULL GRAIN LEATHER TOE BOX
 TRIPLE/DOUBLE STITCHING
 EYELET AND HOOP SPEED LACING
 YKK FULL LENGTH ZIPPER W/ HOOK & LOOP ZIPPER KEEPER
 VAPOR WICK LINING
 VALOTEX WATERPROOF/BLOODBORNE
 PATHOGEN MEMBRANE (ASTM F1671 CERTIFIED FOR
 BLOODBORNE PATHOGEN RESISTANCE)
 REMOVABLE INSOLE
 COMPOSITE SHANK
 PU MIDSOLE
 1A CARBON RUBBER OUTSOLE
 NEW GENERATION AIR HEEL SYSTEM
 SLIP RESISTANT

WATERPROOF



DURA-MAX



DURA-MAX MID 6" MODEL #4205

SPECS

HEIGHT: 6" WEIGHT: 22 OZ. COLOR: BLACK
 SIZE: REG.(D) 4-11.5, 12-14, WIDE (EE) 6-11.5, 12-14
 ACTION LEATHER TOE BOX/900D NYLON
 TRIPLE/DOUBLE STITCHING
 EYELET AND HOOP SPEED LACING
 YKK FULL LENGTH ZIPPER W/ HOOK & LOOP ZIPPER KEEPER
 DUAL AIR/WATER VENTILATION
 FLEXIBLE COLLAR
 REMOVABLE INSOLE
 NYLON SHANK
 FULLY STITCHED CARBON RUBBER OUTSOLE
 OIL & SLIP RESISTANT



Dura-Max. Multiple color and style options featuring a one-piece, solid-stitched rubber outsole and dual air/water ventilation.



DURA-MAX 8" MODEL #4105

SPECS

HEIGHT: 8" WEIGHT: 23 OZ. COLOR: BLACK
 SIZE: REG.(D) 4-11.5, 12-14, WIDE (EE) 6-11.5, 12-14
 ACTION LEATHER TOE BOX/900D NYLON
 TRIPLE/DOUBLE STITCHING
 EYELET AND HOOP SPEED LACING
 YKK FULL LENGTH ZIPPER W/ HOOK & LOOP ZIPPER KEEPER
 DUAL AIR/WATER VENTILATION
 FLEXIBLE COLLAR
 REMOVABLE INSOLE
 NYLON SHANK
 FULLY STITCHED CARBON RUBBER OUTSOLE
 OIL & SLIP RESISTANT





DURA-MAX COYOTE 8"
MODEL #3208

SPECS

HEIGHT: 8" WEIGHT: 24 OZ. COLOR: COYOTE
SIZE: REG.(D) 4-11.5, 12-14, WIDE (EE) 6-11.5, 12-14
SUEDE LEATHER/900D NYLON
TRIPLE/DOUBLE STITCHING
EYELET AND HOOP SPEED LACING
DUAL AIR/WATER VENTILATION
FLEXIBLE COLLAR
REMOVABLE INSOLE
NYLON SHANK
FULLY STITCHED CARBON RUBBER OUTSOLE
OIL & SLIP RESISTANT
AR-670-1 COMPLIANT



DURA-MAX DESERT 8"
MODEL #3105

SPECS

HEIGHT: 8" WEIGHT: 24 OZ. COLOR: SAND
SIZE: REG.(D) 4-11.5, 12-14, WIDE (EE) 6-11.5, 12-14
SUEDE LEATHER/900D NYLON
TRIPLE/DOUBLE STITCHING
EYELET AND HOOP SPEED LACING
YKK FULL LENGTH ZIPPER W/ HOOK & LOOP ZIPPER KEEPER
DUAL AIR/WATER VENTILATION
FLEXIBLE COLLAR
REMOVABLE INSOLE
NYLON SHANK
FULLY STITCHED CARBON RUBBER OUTSOLE
OIL & SLIP RESISTANT



DESERT STORM



DESERT STORM 6" MODEL #3003Z SPECS

HEIGHT: 7" WEIGHT: 21 OZ. COLOR: SAND
SIZE: REG.(D) 4-11.5, 12-15, WIDE (EE) 7-11.5, 12-15
SUEDE LEATHER/RIPSTOP NYLON
TRIPLE/DOUBLE STITCHING
EYELET & HOOP SPEED LACING
YKK FULL LENGTH CURVED ZIPPER W/ HOOK & LOOP ZIPPER KEEPER
REMOVABLE INSOLE
COMPOSITE SHANK
PU MIDSOLE
FULLY STITCHED TOE AND HEEL
1A CARBON RUBBER OUTSOLE
SLIP RESISTANT



OXFORD LITE HIGH GLOSS

OXFORD LITE HIGH GLOSS MODEL #7001

SPECS

WEIGHT: 11 OZ. COLOR: HIGH-GLOSS BLACK
SIZE: REG.(D) 4-11.5, 12-14, WIDE (EE) 7-11.5, 12-14
PATENT PU
VAPOR WICK LINING
REMOVABLE INSOLE
COMPOSITE SHANK
BLOWN RUBBER OUTSOLE
OIL & SLIP RESISTANT
NON-MARKING





**NIGHTHAWK OXFORD
MODEL #2001**

SPECS

WEIGHT: 16 OZ. COLOR: BLACK
SIZE: REG. (D) 4-11.5, 12-14, WIDE (EE) 6-11.5, 12-14
LEATHER/POLYESTER
EYELET LACING
REMOVABLE INSOLE
MOLDED 1-PIECE OUTSOLE
SHOCK ABSORBING HEEL



Nighthawk. Simple, functional styling with high value, quality and performance.



**NIGHTHAWK MID 6"
MODEL #2006**

SPECS

HEIGHT: 6" WEIGHT: 17 OZ. COLOR: BLACK
SIZE: REG. (D) 4-11.5, 12-14, WIDE (EE) 6-11.5, 12-14
LEATHER/POLYESTER
EYELET LACING
REMOVABLE INSOLE
MOLDED 1-PIECE OUTSOLE
SHOCK ABSORBING HEEL



**NIGHTHAWK 8"
MODEL #2008**

SPECS

HEIGHT: 8" WEIGHT: 18 OZ. COLOR: BLACK
SIZE: REG. (D) 4-11.5, 12-14, WIDE (EE) 6-11.5, 12-14
LEATHER/POLYESTER
EYELET LACING
REMOVABLE INSOLE
MOLDED 1-PIECE OUTSOLE
SHOCK ABSORBING HEEL



SAFETY TOE



AIR-TAC GHOST 8" STEEL TOE

MODEL #8010ST

SPECS

HEIGHT: 8" WEIGHT: 25 OZ. COLOR: BLACK
 SIZE: REG.(D) 6-11.5, 12-15, WIDE (EE) 7-11.5, 12-15
 FULL GRAIN LEATHER TOE BOX/RIPSTOP NYLON
 BLOUSE-TAC INNER COLLAR (KEEPS SOCKS UP & BLOUSED PANTS IN)
 TRIPLE/DOUBLE STITCHING
 NYLON LOOP SPEED LACING
 YKK FULL LENGTH CURVED ZIPPER W/ HOOK & LOOP ZIPPER KEEPER
 VAPOR WICK LINING
 REMOVABLE INSOLE
 COMPOSITE SHANK
 PU MIDSOLE
 1A CARBON RUBBER OUTSOLE
 NEW GENERATION AIR HEEL SYSTEM
 SLIP RESISTANT
 ASTM F2413-11 CERTIFIED SAFETY TOE



Air-Tac Steel Toe.
 Protective, Cushioning Comfort with
 ASTM F2413-11 Certified Safety Toe.



AIR-TAC MID 6" STEEL TOE

MODEL #8003ST

SPECS

HEIGHT: 6" WEIGHT: 24 OZ. COLOR: BLACK
 SIZE: REG.(D) 4-11.5, 12-15, WIDE (EE) 7-11.5, 12-15
 FULL GRAIN LEATHER TOE BOX/RIPSTOP NYLON
 TRIPLE/DOUBLE STITCHING
 EYELET AND HOOP SPEED LACING
 YKK FULL LENGTH ZIPPER W/ HOOK & LOOP ZIPPER KEEPER
 VAPOR WICK LINING
 REMOVABLE INSOLE
 COMPOSITE SHANK
 PU MIDSOLE
 1A CARBON RUBBER OUTSOLE
 NEW GENERATION AIR HEEL SYSTEM
 SLIP RESISTANT
 ASTM F2413-11 CERTIFIED SAFETY TOE



SAFETY TOE



MAX-PRO 8" COMPOSITE TOE

MODEL #8108CTZ

SPECS

HEIGHT: 8" WEIGHT: 25 OZ. COLOR: BLACK
 SIZE: REG.(D) 6-11.5, 12-14, WIDE (EE) 6-11.5, 12-14
 FULL GRAIN LEATHER TOE BOX/1200D NYLON
 COMPOSITE TOE
 YKK FULL LENGTH CURVED ZIPPER W/ HOOK & LOOP ZIPPER KEEPER
 WELLMAX PUNCTURE RESISTANT FOOT BED
 HYDRO GUARD WATERPROOF MEMBRANE
 NYLON SHANK
 EVA MIDSOLE
 RUBBER OUTSOLE
 NON-METALLIC
 OIL & SLIP RESISTANT
 ASTM F2413-11 CERTIFIED SAFETY TOE AND PUNCTURE RESISTANT FOOT BED
 APPROVED "ELECTRIC HAZARD RESISTANT"

WATERPROOF



**Max-Pro Composite Toe.
 Waterproof protection with
 ASTM F2413-11 certified safety
 toe and puncture resistance.**



MAX-PRO MID 6" COMPOSITE TOE

MODEL #8106CTZ

SPECS

HEIGHT: 6" WEIGHT: 24 OZ. COLOR: BLACK
 SIZE: REG.(D) 6-11.5, 12-14, WIDE (EE) 6-11.5, 12-14.
 FULL GRAIN LEATHER TOE BOX/1200D NYLON
 COMPOSITE TOE
 YKK FULL LENGTH ZIPPER W/ HOOK & LOOP ZIPPER KEEPER
 WELLMAX PUNCTURE RESISTANT FOOT BED
 HYDRO GUARD WATERPROOF MEMBRANE
 NYLON SHANK
 EVA MIDSOLE
 RUBBER OUTSOLE
 NON-METALLIC
 ASTM F2413-11 CERTIFIED SAFETY TOE AND PUNCTURE RESISTANT FOOT BED
 APPROVED "ELECTRIC HAZARD RESISTANT"

WATERPROOF



THE **PACKIN' TEE**®

THE MOST VERSATILE CONCEALMENT SHIRT ON THE MARKET

Packin' Tee, a superior t-shirt for concealed weapons, is designed for versatility, comfort and style. You can now have your gun at your side without the restricting discomfort from other types of holsters used in carrying concealed weapons. No longer is there a need to wear jackets or other heavy outerwear to conceal your weapon; lightweight shirts/clothing can be worn over the Packin' Tee the same as you would any other undershirt.



WOMEN'S SCOOP NECK

MEN'S CREW NECK

- 100% Pre-Shrunk Cotton
- Extended Length
- Accessory Pouches
- Ability to have holster on left side, right side or in both places
- Holsters available for large or small frame guns
- Re-enforced mounting pads, shoulder and arm holes to prevent sagging
- Commercial grade hook & loop attachment pads for ease of switching accessories
- Available in Men's crew or v-neck, white or black, sizes SM to 4X
- Available in Woman's scoopneck, white or black, sizes SM to XL



THE LATEST IN CONCEALMENT GEAR



MEN'S V-NECK



**ALL HOLSTERS AND ACCESSORY POUCHES
AVAILABLE IN BLACK OR WHITE**



AVAILABLE RIGHT OR LEFT-HANDED



UNIVERSAL HOLSTERS



ACCESSORY POUCH

MAGAZINE POUCH



TOLL FREE 1.800.508.2668

PREMIUM QUALITY SOCKS



#1 SELLER

COOLMAX® DUTY

MOISTURE WICKING
BLACK WITH MARLED GRAY HEEL
AND FOOTPAD

76% COTTON
11% NYLON
11% COOLMAX®
1% POLYESTER
1% SPANDEX

MODEL #110 (SIZE 10-13)
MODEL #111 (SIZE 6-9)



MEN'S CREW

SOLID BLACK

67% COTTON
31% POLYESTER
1% NYLON
1% SPANDEX

MODEL #150 (SIZE 10-13)
MODEL #151 (SIZE 6-9)



MEN'S ANKLE

66% COTTON
32% POLYESTER
1% NYLON
1% SPANDEX

MODEL #158 (SIZE 10-13)
MODEL #159 (SIZE 6-9)



COMFORT DRY

SOLID BLACK

73% COMFORTREL
POLYESTER WITH
MOISTURE WICKING
19% NYLON
8% ELASTIC

MODEL #180 (SIZE 10-13)
MODEL #181 (SIZE 6-9)



MEN'S CREW

83% COTTON
16% NYLON
1% SPANDEX

SOLID NAVY
MODEL #152 (SIZE 10-13)
MODEL #153 (SIZE 6-9)

SOLID KHAKI

MODEL #154 (SIZE 10-13)
MODEL #155 (SIZE 6-9)

SOLID WHITE

MODEL #156 (SIZE 10-13)
MODEL #157 (SIZE 6-9)

PRO-CALF

BLACK LEG WITH WHITE FOOT

81% ACRYLIC
17% NYLON
2% SPANDEX

MODEL #130 (SIZE 10-13)





POLICIES/PROCEDURES

Ridge Outdoors U.S.A., Inc.
P.O. Box 389, Eustis, Florida 32727-0389
Toll Free Fax: 1.866.584.2042
Customer Service & Sales
1.800.508.2668
www.ridgefootwear.com
"Ridge Outdoors U.S.A., Inc. will be referred to as "Ridge" throughout the text"

PRICES

Subject to change without notice.

C.O.D.'S All C.O.D. orders will be cashier's check or money order only. Company checks may be accepted upon submission of a signed Customer Information form for bank verification and approval.

CREDIT All orders must be approved by our Credit Department prior to shipment. All new accounts must submit a signed Customer Information form and a copy of their Business License. Please allow ten (10) working days for credit approval. In the event this business is a corporation or partnership, signing principal agrees to be personally responsible for any and all outstanding balances due Ridge Outdoors U.S.A., Inc.

OVERDUE ACCOUNTS Overdue accounts will be assessed a finance charge of 1.5% per month (18% per annum). This finance charge applies

to all overdue accounts. Failure to pay past due account balances, including finance charges, could result in future shipments being interrupted or sent C.O.D. In the event a credit is issued against an account, the credit will satisfy any outstanding balances including finance charges prior to issuance of said credit. In the event collection procedures become necessary the creditor will pay all costs incurred.

RETURNS All claims for defective merchandise must be made with the Ridge office via phone to obtain a Return Authorization # (RA #), prior to the item being returned. Items returned without prior approval and/or RA #, may be refused. Freight charges on returned items will be the responsibility of the dealer. Ridge assumes freight responsibility on outbound return replacements and/or repairs. Return of defective merchandise must be arranged between the dealer and Ridge. Direct customer interaction is not acknowledged. All cartons must be clearly marked with an RA #. Any other merchandise return, other than defective merchandise, will also require prior authorization from Ridge. Such merchandise will be exchanged or credit will be issued at Ridge's discretion. Under no circumstances will Ridge issue refunds. Returns must be shipped to: Ridge Outdoors U.S.A., Inc., 2817 South Grove Street, Eustis, Florida 32726.

WARRANTY Ridge Footwear is warranted against defects in workmanship and materials for six (6) months from date of sale. Premature wear caused by misuse and abuse is not covered by the warranty. Defective footwear will be replaced, repaired or a credit memo will be issued at Ridge's discretion.

*Ridge will not warrant any boot product due to improper fit or normal wear and tear.

*Dealer should contact Ridge prior to replacing any boot for a customer if they desire Ridge to warranty.

SHORT SHIPMENTS Any claims on short shipments must be made to the Ridge office within five (5) working days of receipt of merchandise.

FREIGHT All shipments are F.O.B. Eustis, Florida. Unless otherwise specified:

- Ridge will choose the freight carrier most suitable for your shipping area,
- Shipping will be prepaid by Ridge and invoiced to the dealer.

MINIMUM ORDERS Initial opening order minimum for Ridge Boot accounts: 24 Pair. Reorder minimum: 4 Pair.

Initial opening order minimum for Packin-Tee accounts: 36 shirts. Reorder minimum: 6 shirts.

DROP SHIP Orders may be "Drop Shipped" for an up-charge of \$5.00

STOCK RETURN

- While it is not Ridge policy to accept product returns, there have been occasions when stock has been returned for credit.
- Ridge will no longer accept stock returns on boots purchased more than 18 months prior to the return date.
- Once a boot style has been announced as being a closeout item, no returns will be accepted on these styles.
- A 15% restocking fee will be charged, unless prior arrangements have been agreed upon between Ridge and the dealer.
- All items will be inspected for package and merchandise condition, to ensure items are resalable, prior to issuance of credit.

TITLE RETAINED-Ridge retains ownership/title and/or security interest in all products shipped until payment in full for paid products is received and reserves all remedies available by law as an owner and/or secured party for repossession of products shipped and/or for damages for wrongful conversion of products shipped.

Acceptance of Ridge Outdoors product is acceptance of Ridge Outdoors policies and procedures.

RIDGEFOOTWEAR.COM

2817 SOUTH GROVE STREET • EUSTIS, FL 32726

P.O. BOX 389 • EUSTIS, FL 32727-0389

CUSTOMER SERVICE/SALES 1.800.508.2668

LOCAL 352.357.2669

TOLL FREE FAX 1.866.584.2042

EMAIL INFO@RIDGEFOOTWEAR.COM

©2018 Ridge Outdoors U.S.A., Inc. Eustis, FL