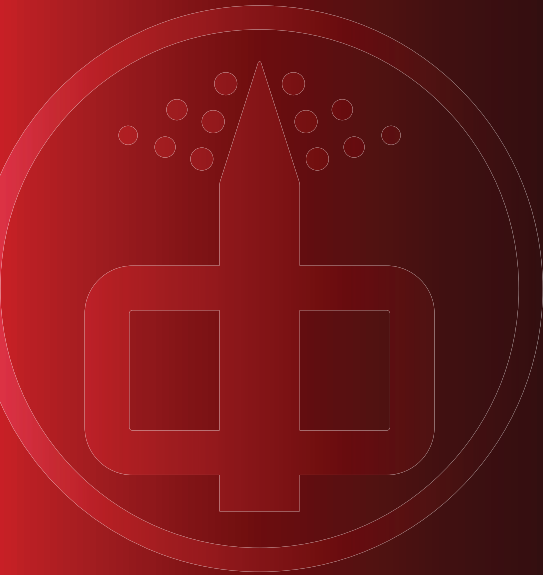


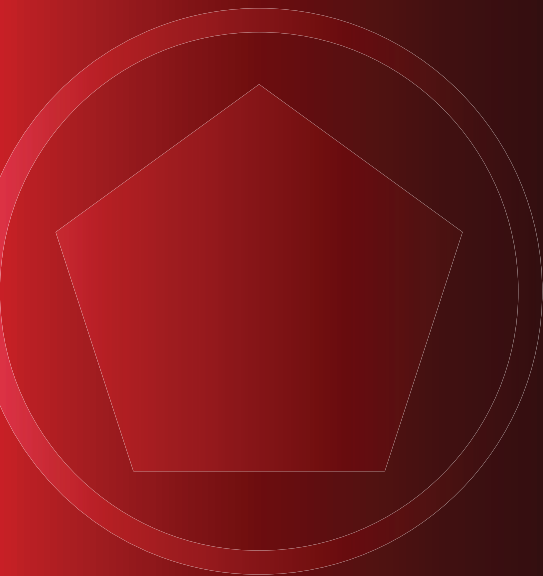


South Park

CORPORATION



FlameFighter



EZ Spanner

South Park Corporation

South Park Corporation provides high-quality fluid handling couplings, fittings, and hardware castings to fire equipment and water metering companies, dealers, and manufacturers throughout the country.

In business for more than 80 years, South Park Corporation distributes products to all 50 states as well as many foreign countries. We are dedicated to providing manufacturers and dealers of firefighting apparatus, vehicle manufacturers, industrial couplings and water meter manufacturing companies with cast products of the finest workmanship and materials at reasonable prices.

All South Park products are guaranteed against inferior workmanship and materials and will be replaced without cost if the items are neither intentionally abused nor accidentally damaged.

Please call us for the latest catalog or visit our website for complete, updated product information. If you wish to establish an account, please visit our website and open your online account with us!

A wide range of products...

This catalog contains most of our standard stock brass and zinc items currently manufactured. More than 99% of the products listed in our catalog are domestically made. Occasionally, however, a product may be produced offshore. Should you have need for special items not shown or listed, please contact us.

Custom design for special needs...

Our long experience in designing and manufacturing specialized brass hardware and fittings for special applications has uniquely prepared us to help you with any request.

High quality with a selection of finish...

South Park products are made of the highest quality materials in a number of finishes.

Reliable service and price...

A one-piece order or one hundred—South Park Corporation assures you fair, honest, competitive prices, quality products, and prompt service.

South Park Corporation is now the parent company to FlameFighter and EZ Spanner.

FlameFighter

FlameFighter Corporation was established in 1987 with the introduction of an innovative product called the “FlameFighter” to be used in the fire service. This tool was invented by a fire chief from a small town in southern Minnesota to keep firefighters safe when extinguishing fires in concealed spaces such as walls, attics, vents, voids and much more.

Starting with the success of this one product, we have grown into a company with over 100 useful products, divided into 11 product groups and over 170 variations. We distribute our products through a network of over 300 fire equipment dealers worldwide, as well as being an OEM supplier to approximately 65 New Fire Apparatus Builders.

We pride ourselves on high-quality workmanship and top-quality service to our customers. We are constantly searching for ways in which we can provide our customers with new and better products to help them accomplish their jobs more safely and effectively.

EZ Spanner

EZ Spanner offers the most innovative design, safety and performance you've ever had in firefighting tools. Our heavy-duty, precision built tools offer solutions and customizable options that accommodate the needs of any fire department.

Take advantage of our one-of-a-kind customizable ratcheting wrenches for added speed and leverage not offered in any other hydrant tools!

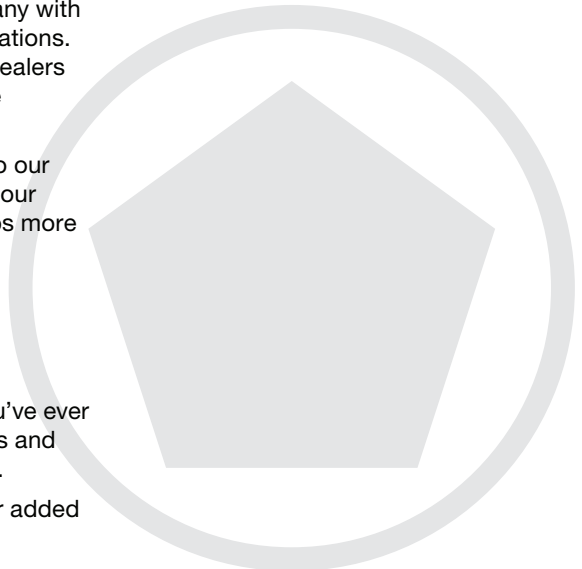
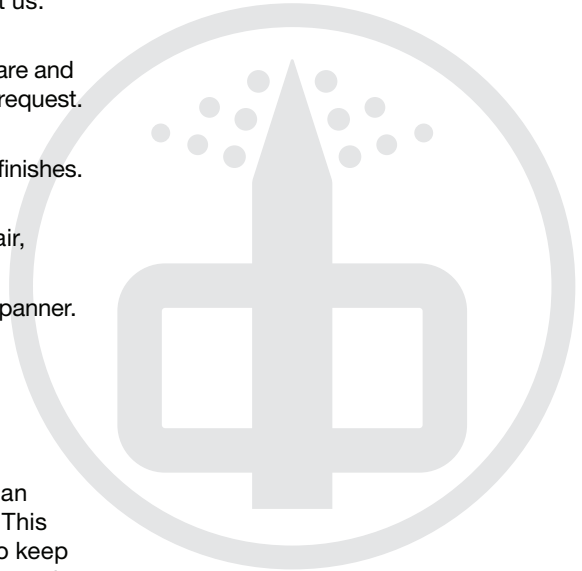


Table of Contents



South Park CORPORATION

Adapters	2	Truck Hardware	12
Couplings	4	Bell	12
Caps & Plugs	5	Folding Steps.	13
Elbows	6	Axe Mounts	13
Storz Couplings	7	Crowbar Mounts	14
Valves	9	Pike Pole Mounts.	14
Wrenches	10	Rail Mounts.	15
Mounting Plates	11	Handles.	15
Parts & Accessories	11	Method To Determine Correct Thread Dimensions	16



FlameFighter

Hose Equipment.	17	UniKart.	30
Hand Tools.	19	Fire Extinguisher & Hose Cabinets	31
SCBA Brackets & Straps	26	Fire Extinguisher Cabinets	32
SCBA Cabinets & Equipment Storage	27	Fire Extinguisher Stands	32
Piercing Nozzles.	28	Fire Karts.	33



EZ Spanner

Ratcheting Fire Hydrant Wrenches	34	Additional Tools	38
--	----	----------------------------	----



South Park CORPORATION

Product Catalog

Adapters

Our full line of brass adapters and reducers are available in any size, lug and thread combinations, and carry a 500 psi rating. Custom thread sizes are available, please be sure to specify your

specific customer thread requirements if they differ from standard sizes. Refer to page 16, Method To Determine Correct Thread Dimensions.

Female-by-male adapter, rocker lug

Rigid adapter furnished in all sizes. Plain brass, chrome or aluminum finish. Rocker lug. Sizes: 1" – 6"



Female-by-male adapter, long handle

Furnished from 3 1/2" – 6" combinations. Plain brass or chrome finish. For smaller sizes see **A-37**.



Double male adapter, rocker lug

Furnished with same thread on both ends or reducing style. Rocker lug. Specify style and finish. Aluminum finish available.



Swivel adapter

Single hose thread swivel one end by rigid hex NPT or hose thread male. Sizes: 1 1/2" – 3" Aluminum finish available.



Swivel adapter with screen

Single hose thread swivel one end by rigid hex NPT or hose thread male. Sizes: 1 1/2" – 3"





Swivel apparatus elbow, 30° bend

- 2 1/2" x 2 1/2" = 30° bend
- 3" x 3" = 30° bend
- 4" x 4" = 30° bend

SE-3930



Swivel apparatus elbow, 45° bend

- 1 1/2" x 1 1/2" = 45° bend
- 2 1/2" x 2 1/2" = 45° bend
- 3" x 2 1/2" = 45° bend

SE-3945



Hydrant connection, three piece long handle

Furnished with swivels on both ends. Plain brass or chrome finish.

DSHC-42



Double female connection, three piece rocker lug

Furnished with rocker lug swivels on both ends. Plain brass, chrome or aluminum finish. Sizes: 1 1/2" – 6"

DF-44



ADF-44





Couplings

We can supply almost any thread and type of fitting needed. Specify finish when ordering. All bushings and nipples are made of brass and carry a 500 psi rating.

Extension coupling, internal lug

Finish is plain brass or polished chrome. 2 1/2" NPT by 2 1/2" NHM by 4" long.

Nipple, hex

Hex-center brass hose nipple, stocked with NPT x NST. Sizes: 1" - 3"

Swivel coupling, without screen

Single hose thread swivel one end by rigid NPT internal lug female. Available in aluminum finish. Sizes: 1 1/2" - 6" Rocker Lug Swivel, 1 1/2" - 3" Long Handle Swivel, 4" - 6"

Swivel coupling, with screen

Single hose thread swivel one end by rigid NPT internal lug female. Sizes: 1 1/2" - 6" Rocker Lug Swivel, 1 1/2" - 3" Long Handle Swivel, 4" - 6"

Female-to-male coupling, hex

Rigid brass bushing stocked with NPT female by NHT male.

Internal lug coupling, without screen

Female NPT by male hose thread bushing with internal lugs. Sizes: 1 1/2" - 6"

Internal lug coupling, with screen

Female NPT by male hose thread bushing with internal lugs. Sizes: 1 1/2" - 6"

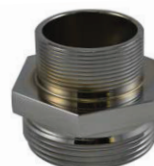
Hydrant conversion coupling

Coupling threads on to existing hydrant nipple for converting to NST. Locking set screw on female side for permanent installation. Sizes: 2 1/2" - 4" - 4 1/2"

IL-31E



HDM-32



SDF-33



ASDF-1515



SDF-33S



HFM-34



IL-35



IL-35S



HCB-7





Caps & Plugs

Please specify size, thread and finish when ordering.
All caps and plugs are brass and available in any thread or finish desired.

Pressure cap, long handle

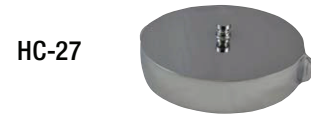
Plain face cap with recessed long handles.
Sizes: 2 1/2" – 6", 500 psi rating.



LHC-26P

Hose cap, rocker lug

Sizes: 1" – 6", 500 psi rating.



HC-27

Hose cap, rocker lug with chain

Sizes: 1" – 6", 500 psi rating. Also available in aluminum.



HCC-28

AHCC-10

Hose plug, rocker lug

Sizes: 1 1/2" – 6", 500 psi rating.



HP-29

Hose plug, rocker lug with chain

Sizes: 1 1/2" – 6", 500 psi rating. Also available in aluminum.



HPC-30

AHPC-10

Hydrant cap

Made of cast iron with pentagon nut, painted finish.
Sizes: 2 1/2" and 4 1/2"



HC-73

Hydrant cap, with chain and ring

Made of cast iron with pentagon nut, painted finish.
Sizes: 2 1/2" and 4 1/2"



HCC-73

Storz blind caps, with rocker lug swivel and chain

Sizes: 1" – 6"



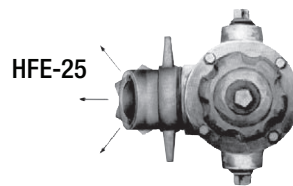
ST82



Elbows

Hydrant flushing elbow

Designed to help overcome the problems created when flushing a hydrant. This elbow attaches to the hydrant outlet and directs the discharge away from ground cover and out of street traffic. Available in 2 1/2, 4 and 4 1/2" sizes. See price sheet for thread options.



Top view of fire hydrant with the HFE-25 Hydrant Flushing Elbow attached showing its 360° rotation.

Discharge elbow, 90° bend without flange

Discharge elbow, 90° bend

1 1/2" NPT free swivel × 1 1/2" NST M

Discharge elbow, 90° bend

2" NPT free swivel × 1 1/2" NST M

Discharge elbow, 90° bend

2 1/2" NPT free swivel × 2 1/2" NST M

MDE-77



Discharge elbow, 90° bend with flange

Discharge elbow, 90° bend

2" NPT free swivel × 1 1/2" NST M with mounting leg
(also available in 2 1/2" × 2 1/2" size)

Discharge elbow, 90° bend

2 1/2" NPT free swivel × 2 1/2" NST M with 4-hole mounting flange

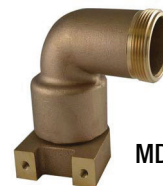
Discharge elbow, 90° bend

2" Vitalic × 1 1/2" NST M with mounting leg

Discharge elbow, 90° bend

2" Vitalic × 1 1/2" NST M with 4-hole mounting flange

MDE-77F



MDE-77F25b

Swivel apparatus elbow, 30° bend

3" × 3" = 30° bend

4" × 4" = 30° bend

SE-3930



Swivel apparatus elbow, 45° bend

1 1/2" × 1 1/2" = 45° bend

2 1/2" × 2 1/2" = 45° bend

3" × 2 1/2" = 45° bend

SE-3945



Storz swivel elbow, 30° bend, long handle

Inlet sizes, 4" – 5"

Outlet sizes, 4" NH – 6" NH

ST80



Storz swivel elbow, 30° bend, rocker lug

Inlet sizes, 4" – 5"

Outlet sizes, 4" NH – 6" NH

ST81





Storz Couplings

Storz blind caps, with rocker lug swivel and chain

Sizes: 1" – 6"

ST82



Storz straight female swivel, rocker lug

Storz sizes: 2 1/2" – 5"

Female swivel sizes: 2 1/2" – 6" NH

ST83



Storz straight female swivel, long handle

Storz sizes: 4" – 6"

Female swivel sizes: 4" – 6" NH

ST84



Storz straight female rigid, rocker lug

Storz sizes: 2 1/2" – 5"

Male rigid sizes: 2 1/2" – 6" NH

ST85



Storz straight male rigid, rocker lug

Storz sizes: 4" – 6"

Female rigid sizes: 4" – 6" NH

ST86



Storz swivel elbow, 30° bend, long handle

Inlet sizes, 4" – 5"

Outlet sizes, 4" – 6" NH

ST80



Storz swivel elbow, 30° bend, rocker lug

Inlet sizes, 4" – 5"

Outlet sizes, 4" – 6" NH

ST81



Butterfly valves with hose threads and Storz connection

See butterfly valve section for options and sizes on page 9.

BV-78 and
BV-78H





Storz Couplings

Storz wrenches, set of 4 with bracket

Wrench Sizes: 4" – 5"

ST87



Storz wrenches, set of 4 with bracket

Wrench Sizes: 2 1/2" – 5"

ST87



Storz single end spanner wrenches

1 1/2" – 2 1/2"

2" – 2 1/2" – 3"

2 1/2" – 5"

4" – 5" universal hydrant spanner

4" – 5" – 6"

4" – 6"

6"

ST88



Storz accessories

Stainless steel screens for 4" and 5"

Storz mounting bracket 2, 3, 4, and 5"

Storz pressure seal 2.5, 3, 4, 5, and 6"

ST89





Valves

Push-pull drain valve

3/4" NPT Valve – push to close, pull to open with 3/4" inlet and outlet. Sand cast brass body features stainless steel handle which, in closed position, protrudes 1 3/8" Pull knob of durable thermoset plastic, imprinted "PULL TO DRAIN."

DV-72



Push-pull drain valve with flange

3/4" NPT Valve, same as DV-72 (above) except valve body has flange for mounting directly behind panel.

DV-72F



Butterfly valve with lever handle

Butterfly valve with speed handwheel

When ordering, please specify options:

- Hose thread flange
- Storz flange
- Storz elbow
- Storz elbow and cap

Butterfly valve features:

- Lightweight aluminum flanges with hardcoat finish.
- Hose threads furnished with rocker lug, aluminum swivel.
- NPT threaded flanges do not swivel.
- 5" or 6" aluminum valve body with stainless steel stem, EPDM seat, bubble tight shut-off up to 200 psi and vacuum rating of 29.9" mercury; valves have tested up to five times pressure rating without bursting.
- Available with lever handle or speed handwheel gear operator.
- Furnished with 3/4" push-pull drain valve.
- Available with screen insert (male hose thread end only).
- Valve should be un-capped, opened and allowed to dry completely after each use. Not recommended for use in a continuously wet application.

BV-78



BV-78H



Gear operator handwheel must be mounted on the right or left side of the valve body for the valve disk open-closed indicator to show the correct position of the valve disk. If the gearbox is mounted so the handwheel is in front of the valve, the open-closed indicator will not indicate the correct position of the valve disk. An optional valve shaft is available to correct this problem. Please call our customer service department for more information.

See price sheet for complete listing of sizes.



Wrenches

Adjustable hydrant wrench and spanner

Head made of ductile iron fits pentagon or square hydrant operating nut. Spanner fits rocker or pin lugs. Handle made of 7/8" diameter steel with knurled hand grip. Bright zinc plated.



AHW-70

Folding pocket spanner wrench, Cast Brass Folding pocket spanner wrench, Die Cast Zinc

Light duty, compact pocket spanner wrench.



PSW-74B

PSW-74Z

Universal spanner wrench

Made of high-strength aluminum alloy. Has gas cock slot, window jimmy, belt loop, and hammer head. For pin or rocker lugs.



USW-75

Wrench holder bracket

Wrench holder only, no wrenches

Wrench Holder Bracket now available for two or three wrenches. See price schedule for part numbers.



WH-76

Wrench set, 2 wrench set



WH-76-2

Wrench set, 3 wrench set



WH-76-3

Storz, 4 wrench set with bracket

Sizes: 4", 5"



ST-87

Storz, 4 wrench set with bracket

Sizes: 2 1/2" - 5"



ST-87

Storz single end spanner

Sizes:

- 1 1/2" - 2 1/2"
- 2" - 2 1/2" - 3"
- 4" - 5" - 6"
- 4" - 6"
- 6"
- 2 1/2" - 5"
- 4" - 5" universal hydrant spanner



ST-88



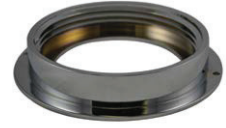
Mounting Plates

Be sure to specify correct thread and finish when ordering.
Mounting plates are made of brass. Available in all threads and finishes.

Female mounting plate

Sizes: 1 1/2" – 6"
Made of sand cast brass with polished chrome finish.

FMP-47



Quic-loc mounting plate

Made of die cast zinc, this quick release equipment holder is available in 1", 1 1/2", 2" and 2 1/2" thread sizes. Chrome finish. Furnished with body gasket.

QL-48Z



Raised mounting plate

Self draining with three center mounting holes.
Sizes: 1" – 6"

RMP-49



Storz mounting plate

Storz mounting bracket 2, 3, 4, and 5"

ST-89



Parts & Accessories

Barrel strainer

Solid brass suction strainer, available with male or female threads. Be sure to specify if male or female when ordering.
Sizes: 2 1/2" – 6"

BS-45



Corner bracket, cross lay roller

Made of die cast zinc with chrome plate finish. Fits 7/16" roller pin.

CLCB-77-Z





Truck Hardware

Bell

Fire bell

Large 12" fire bell, cast in bronze with stand and clapper. Available with either an eagle or acorn nut. Electric striker can be ordered separately and mounted on existing bell stand or complete with bell and hardware as shown to the right. Polished chrome finish. See Price Sheet for listing of bell parts.

FB1210C



Call for Pricing

Engraving options

Laser etching

The laser etching process uses computer template and electronically cuts images onto an existing bell. Please allow two to three weeks for completion.

Panto engraving

The pantographic engraving process physically carves an image into a polished bell, which is then chrome-plated. Cost is usually over 2.5 times that of etching. Please allow six weeks for completion.

FB12ES-10C



Fire bell with electric striker

Same as above with electric striker.

FB12-ES



Electric striker

Photo shows electric striker mounted on stand.





Folding Steps

Folding step

Spring holds step firmly in open or closed position. Made of die cast zinc alloy with either chrome or plain zinc finish.

FS-46Z



Large folding step

- Conforms to NFPA 1901 and FHA, 49CFR specifications.
- Made of die cast high strength zinc/aluminum alloy.
- Tested to withstand over 2,000 lbs. static load.
- Over 42 square inches of serrated non-skid step pad area. Conforms to NFPA 1901-13-7.3.
- Heavy-duty stainless steel spring holds step open or closed.
- Unit will not rust or corrode.
- Furnished with molded rubber mounting gasket to protect truck body and enhance appearance.
- Designed for mounting with 5/16" diameter carriage bolts (not supplied).
- Available in textured cast finish or textured chrome plate.

LFS-46



LED step light

Designed to mount behind and illuminate the LFS-46 large folding step. Conforms to NFPA standard 1901 specifications. Aluminum body with bright chrome finish, furnished with mounting gasket. The LFS46ZC folding step is sold separately.

LFS-46-L



Axe Mounts

Axe strap

For side-mounting application. Made of cast brass with polished chrome finish.

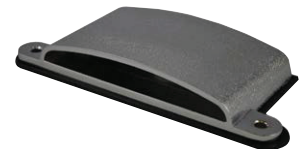
AS-50



Axe blade holder

Axe holder, shield type, completely covers axe blade. Made of die cast zinc with textured chrome finish. Furnished with body gasket.

ZAH-51



Side mount axe handle bracket, brass

Side mount axe handle bracket, zinc

For holding axe handle only; use ZAH-51 for holding blade. Mounts on vertical surface. Polished chrome plate finish. ZSMA-52, furnished with body gasket. Now available with protective sleeve. See price schedule for part number.

SMA-52
ZSMA-52



Bottom mount axe bracket

Same as SMA-52, except mounts on horizontal surface. Made of sand cast brass with polished chrome plate finish.

BMA-53





Crowbar Mounts

Crowbar holder set

Spring-loaded crowbar holder set, for bar of any length. Made of cast brass with polished chrome finish.

CH-54



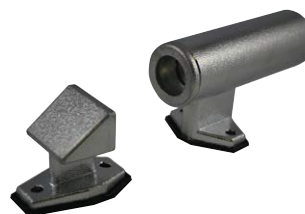
Crowbar holder set, brass

Crowbar holder set, zinc

Raised-style crowbar holder. CH-55 made of sand cast brass with polished chrome finish. CH-55Z made of die cast zinc with textured chrome finish and furnished with body gasket.

CHR-55

CHR-55Z



Pike Pole Mounts

Pike pole bracket, horizontal mount

Made of sand cast brass with polished chrome finish. Fits 1 1/2" pole.

FBP-58



Pike pole bracket, horizontal mount

Made of die cast zinc with chrome plate finish. Sizes available to fit 1 1/8" or 1 1/2" O.D. pole. Furnished with body gasket. Now available with protective sleeve. See price schedule for part number.

FBP-58Z



Pike pole bracket, vertical mount

Made of sand cast brass with polished chrome finish. Fits 1 1/2" pole.

SMP-59



Pike pole bracket, vertical mount

Made of die cast zinc with chrome plate finish. Sizes available to fit 1 1/8" or 1 1/2" O.D. pole. Furnished with body gasket. Now available with protective sleeve. See price schedule for part number.

SMP-59Z



Pike pole ring, brass

Pike pole ring, die cast zinc

PR-61 brass with polished chrome finish.

PR-61Z zinc with textured chrome finish, furnished with body gasket.

PR-61

PR-61Z





Rail Mounts

Flat base end mount rail bracket

Polished chrome plate finish. Furnished with body gasket.
3" end mount rail bracket
3" center mount rail bracket
3" right and left end mount offset rail brackets

ZRB-57



Thread base end mount rail bracket

TBR-57C center mount bracket base threaded with 7/16" NC thread bored for standard 1 1/4" rail, 3 1/2" from base to center of handrail. Made of sand cast brass with polished chrome finish.

TBR-57



Handrail base plate, brass

Handrail base plate, die cast zinc

For 1 1/4" stainless tubing. Polished chrome plate finish. HBP-64Z furnished with body gasket.

HBP-64

HBP-64Z



Handles

Pull handle, brass

Polished chrome finish. Specify base thread when ordering. If not specified, 1/2" NC thread will be furnished.

PH-60



Ladder clamp handle, brass

Polished chrome finish. Specify base thread when ordering. If not specified, 1/2" NC thread will be furnished.

LC-62



Hose clamp handle

Sand cast brass with polished chrome finish for 2 1/2", 4", 4 1/2", 5" and 6" hose. Be sure to specify hose size and base thread when ordering. If not specified, 1/2" NC thread will be furnished.

HC-63



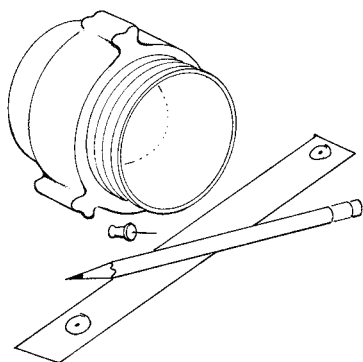


Method To Determine Correct Thread Dimensions

Custom thread sizes are available, please be sure to specify your specific customer thread requirements if they differ from standard sizes.

If you do not have access to a thread gauge and caliper or if a sample cannot be sent with your order, use the following method to determine correct outside diameter and thread pitch for your application.

Equipment Required:



Threaded fitting with a male thread end

Pencil

Push-pin

1" wide strip of paper

Steps

1. Cut a strip of paper 1" wide and long enough to cover the circumference of the male thread end plus an overlap.
2. Wrap the paper strip around the threads and pierce through both layers of the strip at the overlap.
3. Press your thumb firmly against the thread with enough force to transfer the thread impression to the paper strip.
4. Remove the strip and circle the pinholes with a pencil.
5. Measure the distance between the pinholes and divide by 3.1416. The resulting number is the outside diameter measurement (ODM) of the male fitting.

Step 1

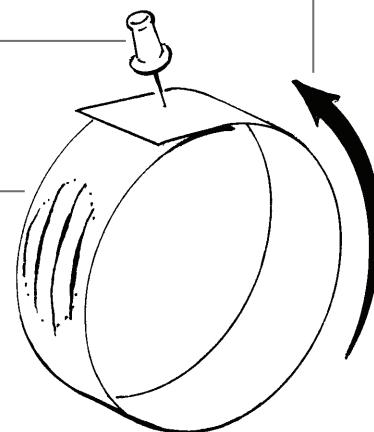
Wrap paper strip around threads

Step 2

Pierce through both layers at overlap

Step 3

Transfer impression of threads to paper



Note: It is critical that both the threads-per-inch (pitch) and the outside diameter measurement (ODM) for the male thread end are included when ordering. Always include the paper strip with your correspondence. If not otherwise specified, "V" sharp thread will be furnished.



FlameFighter

Product Catalog

Hose Equipment

Gas and Electric Hose Tester and Pressure Washer Option

- Complies with NFPA standards
- 1 ½" or 2 ½" adapters
- Built-in tool tray
- Stainless steel ball valves
- Three gallons a minute @ 600 PSI
- Capable of testing up to 6" diameter hose
- Capable of testing up to 300' per discharge
- Fits standard 36" doorway
- Made in U.S.A.

Engine Specs:

- Commercial grade motors and pumps
- Electric: 1.5 HP
- Gas: 163 CC
- Gas models come with Honda engines

A built-in pressure washer is optional and includes 50' of 3/8" non-marking hose, quick release heavy-duty wand and handle, and a stainless steel nozzle with stream straightener.



HT50 – Front



HTG50 – Front



HT50 – Back



HTG50 – Back



Hose Equipment

Hose Washers

Very effective in cleaning all types of dirty and caked hoses. Simply connect to a fire hydrant or pumper with recommended operating PSI of 40 to 60.



39700

- Washes up to 3" hose
- Lightweight aluminum housing
30-60 GPM
- 1 1/2" NST connecting standard



39800

- Washes up to 5" hose
- Lightweight aluminum housing
30-60 GPM
- 2 1/2" NST connecting standard





Hand Tools

Our heavy-duty poles feature handles and heads that are bonded and pined. Our poles are produced from thousands of continuous fiberglass strands, saturated with thermosetting resin and a center plastic core for added stability. A non-fiberglass polyester veil is

impregnated on the surface giving the pole a smooth finish and keeps the fiberglass from splintering. Made in the U.S.A. All poles available 2', 3', 4', 8', 10', 12', or 14' lengths. **Custom lengths available!**

Pike Poles

All pike poles have a round fiberglass handle with a plastic core for added stability, maximum strength, and minimum weight. The outside diameter of the handle is 1 1/4". Made in the U.S.A. Wooden handle available in 6', 8' and 10' only.

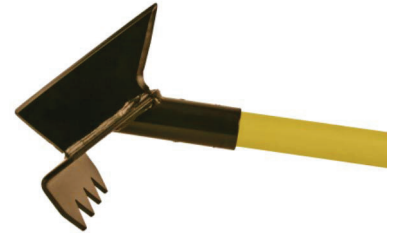


PP02, PP03, PP04, PP06, PP08, PP10, PP12, PP14

With D-Handle: PP02D, PP03D, PP04D, PP06D, PP08D, PP10D, PP12D, PP14D

Drywall Hooks

The head of our drywall hook is fabricated from 3/16" steel plate and then welded into a solid structure. The use of fabricated parts results in a stronger and lighter head. This tool is fantastic for tearing apart walls to find hidden fire pockets. The blade on the back of the head is sharpened on each end and is designed to quickly pierce drywall or plaster. The head is then turned around so the operator can dig into the wall with the aggressive teeth and rip large pieces of material away as needed. Made in the U.S.A.



DWH02, DWH03, DWH04, DWH06, HWD08, DWH10, DWH12, DWH14

With D-Handle: DWH02D, DWH03D, DWH04D, DWH06D, DWH08D, DWH10D, DWH12D, DWH14D

Trash Hooks

The trash hook has the same great features of our standard pike pole. The trash hook head is available in two sizes. Made in the U.S.A.

Standard size: 1/2" tine

Heavy Duty size "LA": 5/8"



TH02, TH03, TH04, TH06, TH08, TH10, TH12, TH14

With D-Handle: TH02D, TH03D, TH04D, TH06D, TH08D, TH10D, TH12D, TH14D

Heavy Duty part numbers: THLA02, THLA03, THLA04, THLA08, THLA10, THLA12, THLA14. Also comes in D-Handle option.



Hand Tools

Pole Parts

For 1.25" OD Poles



DHLARGE – D Handle



THH – Trash Hook Head



MH – Muster Hook



DHSMALL – D Handle



PIKEHEAD – Pike Head



DWH – Dry Wall Hook



Fiberglass Pole only sold per foot



VEC – Vinyl End Cap



FLH – New York Roof Hook



930HT – Mounting Hardware



FFRH – Fire Rake/ Flapper Head (not shown)



FLPB – Pry Bar tip



BP1 – Female Tube End



BP2 – Male Tube End



PPSLEEVE – Pike Pole Extension Sleeve

Hand Tools



New York Roof Hooks

Steel and Fiberglass Pole/Shfts Available



FLH – New York Roof Hook



FLHH



FLGSF

Pike Pole Kits

All poles have a round fiberglass handle with a plastic core for added stability, maximum strength and minimum weight. The outside diameter of the handle is 1 1/4".

Roof Kit

- 1-3' Pike Head
- 1-3' Trash Hook
- 1-3' D-Handle
- 1-4' Ext Pole



Salvage Kit

- 1-3' Dry Wall Hook
- 1- Squeegee
- 1- Square Nose Shovel
- 2-4' Ext Handles with Rubber Grip
- 1-4' Ext Pole



Salvage Bag

- BPS Salvage Bag
- BPVB Roof Bag



Build-A-Pole

- BP3PH 3' Pike Head
- BPTH. 3' Trash Hook
- BPDWH. . . . 3' Dry Wall Hook
- BPD3. 3' D-Handle
- BP3EXT . . . 3' Pole Extension
- BPBH Broom Head
- BP4EXT. . . . 4' Extension Pole
- BPSH Square Head Shovel
- BPSQ Squeegee Head
- BPSS. Scoop Shovel Head
- BP3RK 3' Ext with gas shut-off
- BPD. 6' D-Handle
- BP3RG Handle Rubber Grip
- BP3EXTD . . . 4' D-Handle





Hand Tools

Shovels

All poles are produced of continuous fiberglass strands, saturated with thermosetting resins and a center plastic core for added stability. A non-fiberglass polyester veil is impregnated on the surface giving the pole a smooth finish and keeps the fiberglass from splintering.



RPS-48 (length 48")

RPS-27D (length 27", D-Handle)



SQP-48 (length 48")

SQP-27D (length 27" D-Handle)



LSS-44 (length 44")



Wildland Tools



FB – Broom



FSW – Forestry Shovel



PUL – Pulaski Fire Axe with Fiberglass Handle

PULW – Pulaski Fire Axe, Ash Wood Handle



MT – McLeod Tool, Fiberglass Handle

MTW – McLeod Tool, Ash Wood Handle



FR – Fire Rake, Fiberglass Handle

FRW – McLeod Tool, Ash Wood Handle



FF – Fire Flapper, Fiberglass Handle

FFW – Fire Flapper, Ash Wood Handle



Axes



PHAFR6LB – (shown) 6 lb. Pickhead Axe with Fiberglass and Rubber Handle



FHAFR6LB – (shown) 6 lb. Flathead Axe with Fiberglass and Rubber Handle



PHAF6LB – (shown) 6 lb. Pickhead Axe with Fiberglass Handle

FHAF6LB – 6lb Flathead Axe with Fiberglass Handle



PHAH6LB – (shown) 6 lb. Pickhead Axe with Hickory Handle

FHAH6LB – 6 lb. Flathead Axe with Hickory Handle

6 lb. Axes Pick Head

PHAF6LB Pickhead Fiberglass Handle 36"

PHAFR6LB. Pickhead Fiberglass/Rubber Handle 36"

PHAH6LB. Pickhead Hickory Handle 36"

6 lb. Axes Flat Head

FHAF6LB Flathead Fiberglass Handle 36"

FHAFR6LB Flathead Fiberglass and Rubber Handle 36"

FHAH6LB. Flathead Hickory Handle 36"

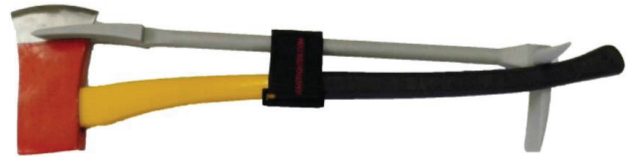
Replacement Axe Handles

FGAHRG Fiberglass Yellow with Rubber Grip 36" Length

WAH. Wooden

Forcible Entry Tool

Get into buildings or other areas of confinement when normal means of entry are locked or blocked and when accessing doorways “through the lock” or “around the lock” depending on the techniques used.



FEIS – Forcible Entry Set (FE30, FHAFR6LB, Axe Strap)



FE24 – 24" Forcible Entry Tool

FE30 – 30" Forcible Entry Tool

FE36 – 36" Forcible Entry Tool



AXS – Axe Strap





Hand Tools

Bolt and Cable Cutters



CC24 – Cable Cutters (Available in 24" length)



BC14, BC18, BC24, BC36, BC42 – Bolt Cutters (Available in 14" 18", 24", 36", 42" lengths)

Replacement Tips

- BC14 14" Bolt Cutter
- BC14TIP 14" Replacement Tips
- BC18 18" Bolt Cutter
- BC18TIP 18" Replacement Tips
- BC24 24" Bolt Cutter
- BC24TIP 24" Replacement Tips
- BC36 36" Bolt Cutter
- BC36TIP 36" Replacement Tips
- BC42 42" Bolt Cutter
- BC42TIP 42" Replacement Tips
- BC48 48" Bolt Cutter
- BC48TIP 48" Replacement Tips
- CC24 24" Cable Cutter

Wrenches



STW – Storz Wrench



SPW – Spanner Wrench



HYD01 – Hydrant Wrench



HYD02 – Hydrant Wrench

Pry Bars, Sledgehammers and Mallets



WB14, WB24, WB36, WB48 – Wrecking and Crow Bars (Available in 14", 24", 36" or 48")



PB24, PB36, PB51, PB60 – Pinch Bars Heavy Duty (Available in 14", 24", 51", or 60")



SH08, SH10, SH12, SH16, SH20 – Sledgehammer (Available in 8 lb., 10 lb., 12 lb., 16 lb. or 20 lb.)



DBH01, DBH02, DBH03, DBH04, DBH10 – Dead Blow Hammer (Available in 1 lb., 2 lb., 3 lb., 4 lb. or 10 lb.)



Gear Bags

Made of heavy-duty water-resistant nylon. Main compartment has double zipper for easy packing and unpacking. Additional storage in a flat, zippered outside pocket for gloves, hood, and other small items. Made in China.



FG15011

- 20"D x 17"H x 16"L
- With Maltese cross
- 1 ½" Full across web straps
- Front pocket: 13" x 16"



FG15012

- 12"D x 14"H x 36"L
- No Maltese cross



FG15017

- 26"W x 18"H x 30"L
- 1 ½" Full across web straps
- Maltese cross print included
- Padded handle and shoulder strap



FG23015

- 16"W x 16"H x 34"L
- Padded shoulder strap
- 250 lb. Capacity
- Maltese cross print included





SCBA Brackets & Straps

SCBA Bracket with Safety Strap NFPA Compliant Model 14000

FlameFighter 3-Point Release. In crew areas where SCBA's are stored, keep them locked securely in place with this system. You can don the SCBA while en route and keep it safely secured. When you reach your destination, pull the lanyard from between your legs, or alongside the seat and you are ready to go! The 14000 fits all brands and tank sizes. Meets NFPA 1901-03. Made in the U.S.A.

The rugged FlameFighter bracket safeguards your SCBA cylinders from scarring and damage. The highest quality nylon protective coating and thermoplastic available will outlast all other coatings. Strong resilient cylinder clips made from 1075 spring steel will hold their shape and will not damage the cylinder. We guarantee it with the industries Original SCBA Bracket Lifetime Warranty!

Our clips are coated with a base coat of high-grade nylon and a second layer of high-grade thermoplastic for added extra protection on the tips of the clips. Excellent for use with all cylinders including carbon fiber cylinders. Third party tested to over 50,000 cycles. All of our SCBA brackets are made in the U.S.A.



14000

15251

30 min. High Pressure

15251SCBA Bracket 5.25"

25251SCBA Bracket 5.25"
Unassembled



35251 – Clip Only 5.25"
(30 min. High Pressure)

30 min. Low Pressure, 45 min. High Pressure

16751SCBA Bracket 6.10"
to 6.75"

26751SCBA Bracket 6.10"
to 6.75" Unassembled

36751 – Clip Only 6.10" to 6.75"
(30 min. Low Pressure, 45 min. High Pressure)

60 min. Low Pressure, 60 min. High Pressure

17251SCBA Bracket 7.25"

27251SCBA Bracket 7.25"
Unassembled

37251 – Clip Only 7.25"
(60 min. Low Pressure, 60 min. High Pressure)



38001 – Back Plate



34000 – Cradle Only for 14000



39015 – 48" Safety Strap Kit NFPA Compliant



38011 – Foot Plate



39002 – Safety Strap 35"



39011 – Safety Strap 35" with Mounting Hardware

SCBA



SCBA Cabinets & Equipment Storage

These are heavy-duty cabinets made of durable, rotation molded polyethylene with maximum UV protection. They are equipped with automotive style door gaskets that will keep out dirt, dust, water and chemicals for years of trouble-free service. Hinges and

latches are made of reliable nylon. Some models are available with alarms and/or locks. Built for many years of trouble-free protection. All cabinets have yellow doors on black boxes and polycarbonate windows that block UV rays. Made in the U.K.

Part #	Width Outside	Width Inside	Height Outside	Height Inside	Depth Outside	Depth Inside
JBXY70	11.75"	10.5"	27.5"	24.5"	10"	8.25"
JBXY85	22.25"	19.63"	33.5"	30"	14.75"	11.75"
JBXY90	35.5"	33.5"	35.5"	32.25"	16.5"	13.5"
JBXY95	17.5"	14.7"	37.4"	36"	11"	7.67"



JBXY70 – (1) Escape or Respirator



JBXY95 – (2) Escapes or Respirators



JBXY85 – (1) SCBA



JBXY90 – (2) SCBA's

SCBA Storage Bags

Built for rugged use and maximum protection. One size fits all SCBA's. Heavy-duty 22 oz. vinyl provides protection and durability in all conditions. Made in the U.S.A.

29"H x 14"W x 12"D

39100 – Red w/ Velcro

39101 – Red w/ Zipper

39102 – Yellow w/ Velcro

39103 – Yellow w/ Zipper



Mask Bags

Built for rugged use and maximum protection. Constructed of heavy-duty Cordura with soft interior lining. Velcro closures and large pull tabs allow for fast removal of the SCBA mask. Made in China. Custom bags available.



39160CR – Red only



39180CR – Red only

Bottle Carriers

Our collapsible SCBA Bottle Carrier solves your fire ground storage needs. In expanded position, it will hold 8 spare cylinders. It will fit easily into truck compartments when collapsed flat. Made in U.S.A.

- Rugged nylon coating ¼" dia. wire
- Holds 8 bottles
- Large size fits (6) ¾" or (7) ¼" bottles
- Small size fits (5) ¼" bottles



39400 – Holds 8 (6.10-7.25" Bottles)

39401 – Holds 8 (5.25" Bottles)



Piercing Nozzles

Original FlameFighter 1000

The original FlameFighter since 1987 gets you to the source of the fire quickly. In just seconds, firefighters can insert a FlameFighter nozzle into virtually any desired entry point and generate a high pressure spray.

- Up to 300 GPM
- Battery ram style
- Replaceable tip
- Mounting hardware included
- 2400 sq. ft. water ball at 150 psi
- Made in U.S.A.

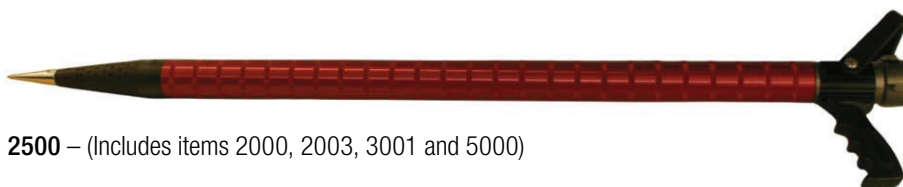


1000

Model 2500

This unit allows you to determine the length best suited for your firefighting situation. Modular sections of 2', 3', 6' give you the lengths of your choice. Manufactured of the finest high quality steel and aircraft aluminum.

- Up to 300 GPM
- Pistol grip valve
- Replaceable nozzle tip
- Mounting hardware included
- 2400 sq. ft. water ball at 150 psi
- Made in U.S.A.



2500 – (Includes items 2000, 2003, 3001 and 5000)



3002 – 1.5 shut-off valve



3001 – 1.5 shut-off valve with grip used with 2500



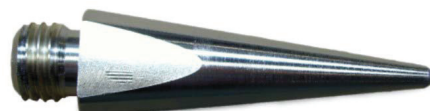
5000 – Mounting hardware for 1000/2500 included in kits



2000 – Nozzle and Tip



2001 – 1' ext., 2002-2' ext.
2003 – 3' ext., 2006-6' ext.



3200 – Replacement tip for 1000/2000



900 Series

The 900 series nozzles are lightweight and combine the best of both durability and flexibility. Nozzle only needs to be driven in 3 3/4" to have full penetration of the sprayer unit giving coverage of up to 25' in all directions.

Ideal for breaching walls and powerful enough for fires in attics, basements, mobile homes, garages, vehicles or any confined space. The series comes with nozzle, mounting hardware and optional shut-off valve.

- Replaceable nozzle tip and strike plate
- Foam and wetting gels
- Extension tubes available for extra reach (2' or 6' per extension)
- All models available with or without valve
- Comes standard with 1.5 NST thread (other threads available)
- Safety handle to hold the unit when a sledgehammer is being used to drive the nozzle in
- Made in U.S.A.



902/204 – 175 GPM

902 – (1'-2' extension) without shut-off valve

902K – (1'-2' extension) with shut-off valve

904 – (1'-2' extension) without shut-off valve

904K – (1'-2' extension) with shut-off valve

920 – 2' tube steel

926 – 6' tube aluminum

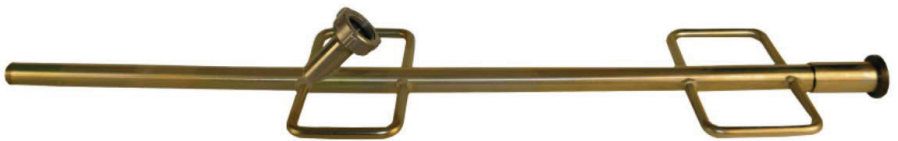
936 – 6" extension for 906



906 – 125 GPM. 90° head knurled handle

906 – without shut-off valve

906K – with shut-off valve



910 – Batteram Style 175 GPM

910 – (1'-2' extension) without shut-off valve

910K – (1'-2' extension) with shut-off valve



930 – Mounting clamps for 900 series



950 – Replacement nozzle for 900 series



955 – Strike plate for 902, 904 and 910





Piercing Nozzles

The original augustus tools for vehicle fires.

Series 100 for Portable Extinguisher/Water Cans

90° head portable extinguisher tool with 6.5' hose.

AGT110 – Extinguishing agent CO₂

AGT120 – Extinguishing agent dry chemical

AGT130 – Extinguishing agent water and foam

AGT140 – Extinguishing agent (all of above) includes storage brackets



AGT120



AGT220

Series 200 for Hose Lines

90° head, 55 GPM, 6.5' Hose, 5" penetrating depth, full time swivel, extinguishing agent water and foam

AGT220 – Tool only

AGT230 – Tool and 1" flat hose "WHIP" with 1 ½" NST swivel

AGT240 – Package includes tool, hose, valve, storage brackets

Unikart

Ideal for indoor/outdoor storage of fire hose reels, fire blankets, sand, first aid equipment, grit, salt, sand, absorbents, fertilizer, animal feed, gardening, coals, logs, etc.

- Mobile bin for multiple applications suitable for indoor and outdoor use/ storage compact and space saving design with robust rubber wheels and slanted lid for water run-off
- Capacity of 20 gal. — saves continuous refilling from a stationary unit
- Ergonomic handle for ease of use — outside handles to push and inside handle to pull the cart
- Lid can be secured in vertical position for convenient dispensing/loading
- Clever balance point for easy maneuvering; will fit through pedestrian doorway
- 42 ½"H x 22 ¾"W x 17 ¼"D (24.25 lb.)
- Good impact resistance to -40° F
- Splash-proof
- Lockable
- Made in the U.K.



WJ75Y – Yellow



WJ75G – Green



WJ75R – Red



Fire Extinguisher & Hose Cabinets

Cabinets are made of durable molded polyethylene with maximum UV protection. Built to keep out dirt, dust, water, and chemicals. Hinges and latches are made of reliable nylon. Standard colors are red door with black

box. Wall or vehicle mounting. Made with polycarbonate windows that block UV rays. Door can be for left or right hand use with heavy-duty door gaskets. Built for years of trouble-free service and protection. Made in the U.K.

Part #	Width Outside	Width Inside	Height Outside	Height Inside	Depth Outside	Depth Inside
JFEX03	8.5"	16.5"	16"			
JFEX01	9.25"	7.75"	25"	23.25"	9.5"	8.5"
JBTE68	10"	9"	26.5"	26"	10.5"	9"
JEBE06	8.75"	8.25"	24"	23.5"	9.5"	9"
JBWE70	11.75"	10.5"	27.5"	24.5"	10"	8.25"
JBXE83	12.5"	11"	32.5"	29"	10.5"	8.25"
JBDE73	14.5"	13"	26"	26"	12"	11"
JBWE95	17.5"	14"	37"	36"	11"	8"
HRE56	20"	15.5"	25"	19.75"	7.5"	5.5"
JBDE85	21.5"	20.75"	33.5"	30"	14.75"	11.75"
JBXA90	35.5"	33.5"	35.5"	32.25"	16.5"	13.5"



JFE03 –
(1) 2.5 lb. Bottle



JFEX01 –
1) 10 lb. Bottle



JBTE68 –
(1) 10 lb. Bottle



JEBE06 –
(1) 10 lb. Bottle



JBWE70 –
(1) 10-20 lb. Bottle



JBXE83 –
(1) 20 lb. Bottle



JBDE73 –
20-30 lb. Cartridge
Operated



JBWE95 –
For use with CO₂
extinguisher



HRE56 – Ideal for marine
application. Holds 50'
section of hose.



JBXA90



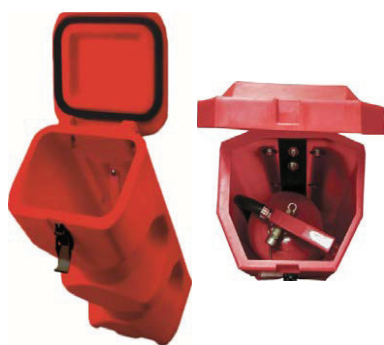
JBDE85



Fire Extinguisher Cabinets

Made in the U.K.

Part #	Width	Height	Depth
JBFR64	9.75"	25.25"	9.75"
JBFR65	10.24"	25"	10.75"
JBFR75	12"	29.5"	12"



JBFR64 – (1) 10 lb. bottle



JBFR65 – (1) 10 lb. bottle



JBFR75 – (1) 20 lb. bottle

Fire Extinguisher Stands

- Suitable for all flat-bottomed 10-20 lb. extinguishers and 10 lb. CO₂ extinguishers
- Ideal for public buildings, offices, hotels, airports, showrooms etc.
- Immediate access in case of emergency
- Cost saving flat pack design — transport, storage, etc.
- Easy snap-fit assembly
- Durable: Resists scuffing and cracking
- UV resistant PE
- 100% recyclable
- Fire extinguisher label
- Made in the U.K.



JFP01



JFP02 – (2) 10-20 lb. bottles



JFP09 – (1) 10-20 lb. bottle

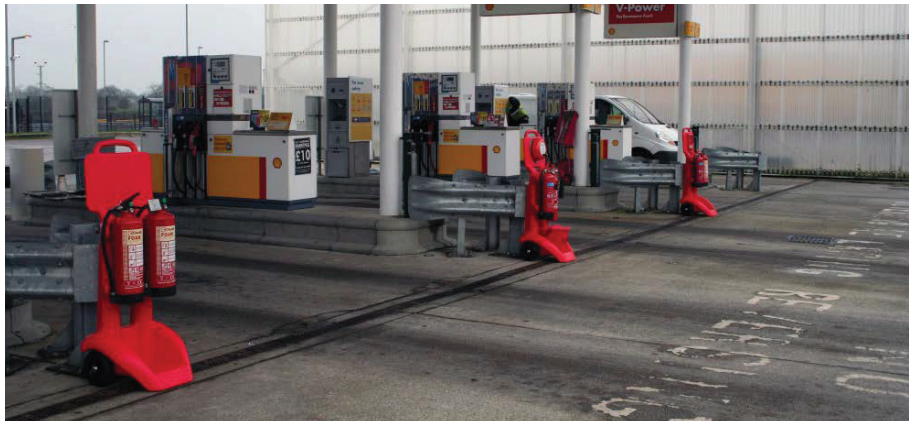


JFP10 – (2) 10-20 lb. bottles



Fire Karts

- Innovative mobile fire point for two extinguishers (including CO₂)
- Max combined weight of extinguishers: 66 lb.
- Made from non-corroding, scratch-resistant, UV stable PE-100% recyclable
- Ideal for gas stations, garages, construction sites, indoor/outdoor festivals, harbors, campsites, etc.
- Extinguisher cradles for stable transport
- Slots accommodate multiple extinguishers and bracket types, hooks supplied
- Allows for highly visible alarm fitment of various shapes and sizes to the front of the unit
- Base with drainage slot, designed for various fire bucket sizes and shapes
- Solid rubber wheels
- Optimized center of gravity-easy to move, pull or push
- Design allows to slide unit up/ down a step smoothly
- Made in the U.K.



WEX01 with JHSA1

WEX01 with JRHB

Extinguishers not included

WEX01 Fire Kart

JRHB Howler alarm – rotary bell

JHSA1 Battery operated alarm w/ flashing lights

JPFB1 Fire bucket

JPBL1 Fire bucket lid

Fire Karts





EZ Spanner

Product Catalog

Ratcheting Fire Hydrant Wrenches

The only multifunction "Ratcheting" fire hydrant wrench fully customizable to any fire district's needs! The high-strength aluminum body, stainless steel socket gears and cover plate provides a heavy-duty design built to last! Custom hooks on top

are made for a snug fit on all sizes of hose couplings, fittings and eliminates the "universal" style hook that commonly slips off the lugs! The EZ Spanner ratcheting wrench is offered in a 2-hole or 4-hole option with either the extension handle or standard handle.

2-Hole or 4-Hole Ratcheting Fire Hydrant Wrench With Extension Handle

- Three custom designed hooks
- Choose from nine different socket sizes
- Extendable handle
- Weight: 5.5 lb.
- Length: 19 1/2" closed - 23" open
- Thickness: 3/4"
- Fully customizable ratcheting sockets

2-Hole or 4-Hole Ratcheting Fire Hydrant Wrench With Standard Handle

- Three custom designed hooks
- Choose from nine different socket sizes
- Compatible with EZ Spanner Breaker Bar (EZ-BB-100)
- Weight: 5 lb.
- Length: 19"
- Thickness: 3/4"
- Color coordinated sides: blue faces the direction of water flow





“Billy Goat” Compact Ratcheting Fire Hydrant Wrench

This is the more compact, lightweight version of the #2001 2-hole ratcheting hydrant wrench. The only multifunction “Ratcheting” fire hydrant wrench customizable to any fire district’s needs! The high-strength aluminum body, stainless steel socket gears and cover plate provides a heavy-duty design built to last! Custom hooks on top are made for a snug fit on all sizes of hose couplings, fittings and eliminates the “universal” style hook that commonly slips off the lugs!

- Three custom designed hooks
- Choose from nine different socket sizes
- Compatible with EZ Spanner Breaker Bar (EZ-BB-100)
- Weight: 3.25 lb.
- Length: 16"
- Thickness: 3/4"



EZ-3001

“Cyclops” Compact Ratcheting Fire Hydrant Wrench

Introducing the Ez Spanner “CYCLOPS” single ratcheting hydrant wrench. You asked for it, so we listened! Our smallest, lightest, most compact ratcheting hydrant wrench is perfect for those districts that only require one size to fit all hydrants in the area. You get the same high strength, multi-functional tool as the rest of our line of wrenches, and you can also add the EZ Spanner “Breaker Bar” to the “CYCLOPS” wrench for added leverage on those really hard to open hydrants! Just choose any one of our nine size options, then put your wrench to work!

- Three custom designed hooks
- Choose from nine different socket sizes
- Compatible with EZ Spanner Breaker Bar (EZ-BB-100)
- Weight: 2.0 lb.
- Length: 11.75"
- Thickness: 3/4"

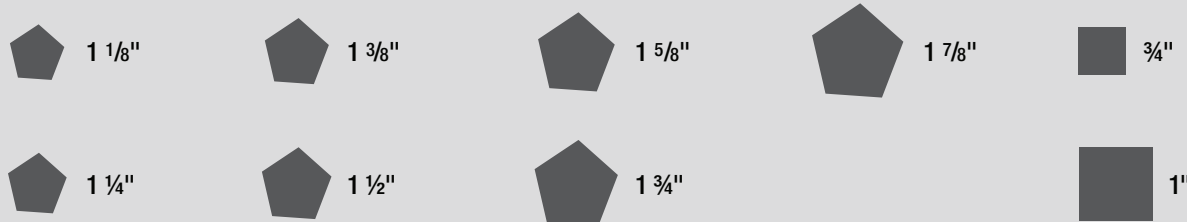


EZ-1001

Customizing Any Ratcheting Wrench

All ratcheting gears are interchangeable and can be arranged in any order you wish. Put your most commonly used size at the top for the best leverage.

Available Sizes





Ratcheting Fire Hydrant Wrenches

EZ Spanner Adjustable Fire Hydrant Wrench

The EZ Spanner Adjustable Hydrant Wrench combines innovation and function to help speed up hydrant operations. The simple “QuickSlide™” mechanism enables the wrench to be adjusted from the smallest to the largest pentagonal or square shaped caps and valve stems. This advantage is critical when your standard wrench does not fit, such as in mutual aid situations. With the wrench in the fully open position, simply push the button, slide the base to ensure a tight fit and the tool automatically locks into position! The wrench is constructed of high-grade aluminum and stainless steel which virtually eliminates the rusted, loose fitting screw style that has been used for generations. The “Standard Handle” is designed to be used with the EZ Spanner Breaker Bar for added leverage. This combination provides the maximum leverage available for opening hydrants.

- QuickSlide™ mechanism
- Three custom designed hooks
- Compatible with EZ Spanner Breaker Bar (EZ-BB-100)
- Weight: 3.25 lb.
- Length: 16"
- Thickness: 3/4"



EZ-6001



Ratcheting Wrenches



5-Hole Non-Ratcheting Fire Hydrant Wrench

The EZ Spanner Standard Hydrant Wrench includes five popular socket sizes to ensure you have the right fit to get caps and valves opened. The high-strength aluminum body and wider ergonomic design of the handle gives you a very lightweight and natural feel in your hand.

Custom hooks on top are made for a snug fit on all sizes of hose couplings, fittings and eliminates the “universal” style hook that commonly slips off the lugs!

- Three custom designed hooks
- Compatible with EZ Spanner Breaker Bar (EZ-BB-100)
- Weight: 1.88 lb.
- Length: 16"
- Thickness: 3/4"

Included Sockets:

- 1 1/8"
- 1 7/8"
- 1 5/8"
- 1 1/2"
- 1 3/8"



EZ-5001





Additional Tools

Mini-Goat™ Pocket Tool

The Mini-Goat™ Pocket Tool was designed as a multipurpose tool to be carried in your pocket. It incorporates the EZ Spanner custom hook design, into a small, slim hand tool. It is especially useful at a pump panel where it fits into tight compact spaces, unlike other “standard” hydrant wrenches. Use the custom hooks to tighten and loosen fittings and couplings. The two convenient gas shut-off’s give you options for getting the tool into tight spaces making it easier to turn the valve. Down the center of the wrench, is an incorporated multi-step nut wrench, for a quick fit onto standard nuts. This wrench is also great in the field where it can be used to tighten hose couplings and for a variety of other uses. It’s a strong aluminum, very lightweight and durable tool.

- Weight: .5 lb.
- Length: 9 7/8"
- Thickness: 3/8"
- Available in silver, black, red, blue, and green



EZ-MG-100

EZ Spanner Breaker Bar

The slide-on extension bar is a very useful accessory that is compatible with all EZ Spanner “Standard Handle” tools. Made from high strength, solid aluminum, this tool gives you an immediate option for adding leverage to those very hard to open fire hydrants. Simply slide it on the handle and go to work! Two convenient gas shut-off’s are also included and provide a quick and easy solution to shutting down the meter.

- Weight: 2.7 lb.
- Length: 16"
- Thickness: 1"

Compatible with:

- EZ-4400
- EZ-2200
- EZ-6001
- EZ-3001
- EZ-5001
- EZ-1001



EZ-BB-100



EZ Spanner Hose/Tool Bag

The EZ Spanner tool / hose bag is made to complement the EZ Spanner line of tools, and will also work for most of the common hydrant tools in the field. The bag attaches directly to your supply hose with three Velcro® straps, and will even expand with your hose when it's loaded! It holds a variety of your selected hydrant tools. The bag is lightweight, yet constructed of a very durable, rip-stop waterproof material, specially designed for the job at hand. This tool bag keeps your tools secure with a two-sided Velcro closure, yet opens easily with one pull of the opening strap! When not in use, your tools remain completely covered from the elements.

- Weight: 2 lb.
- Length: 22"
- Thickness: 8"
- Holds a variety of tools
- Expands with full hose
- Easy open Velcro

EZ-HB-100



Terms and Conditions of Sale

Open account payment terms are: 2% (discount on goods price only) – 10 days, net 30 days from invoice date, unless otherwise arranged, on open account shipments only. Invoices payable in U.S. dollars only. Any brokerage fees, taxes and duties are the responsibility of the buyer.

Accounts with balances older than 45 days and undisputed will result in shipments being made on a COD basis.

Accounts with balances older than 60 days will be denied further credit until the account is current or shipments being made on a COD basis, plus past due amount added to COD tag.

Continued abuse of open account terms will result in all future shipments being made on a COD basis only.

A finance charge of 1.5% per month (18% APR) will be added to all unpaid invoices past the 30-day net terms.

Prices and specifications subject to change without notice. Quantity prices apply to the quantity purchased for each specific part number. Invoices issued will be based on prices in effect at time of shipment. Deliveries may vary with availability of materials and production requirements.

All shipping charges (ground or air) are prepaid and will be added to the invoice. Unless otherwise arranged in advance all freight shipments will be shipped "freight collect" FOB our factory. We do not ship via Parcel Post.

Warranty and Disclaimer

South Park Corporation, South St. Paul, Minnesota, (Seller) warrants to the original purchaser of firefighting equipment products manufactured by the Seller and to any person to whom such products are sold or transferred to be free from defects in materials or workmanship for a period of one year from the date of the Sellers original invoice.

Seller will, upon examination of alleged defective product, either replace the product without charge or refund purchase price paid. Under no circumstances does this warranty apply to products that have been altered, intentionally abused or accidentally damaged. Seller disclaims any implied warranties of merchantability or of fitness for any particular purpose. Seller further reserves the right to change the parts or design of its products without notice. No person has the authority to change, amend or modify this warranty and disclaimer.

Important Notice

We supply Dun & Bradstreet Information Services a monthly aged analysis of our customers payment history.

Returned Goods Information

Returns are accepted on standard catalog parts in good and reusable condition. Returns on special "CT" custom machined parts will not be accepted. All return goods must include a copy of our invoice under which shipment was made for parts being returned. A restocking charge of 20%, plus shipping charges will be deducted from credits issued.

Billing or shipping errors; disputed invoices, or shortages should be brought to our attention immediately. Damaged shipments should be reported to the delivering agent, and signed for as such.

For assistance and replacement information call our Customer Service Department at 651-455-4510. Our toll-free FAX number is 800-373-1326.

More than 99% of the products listed in our catalog are domestically made. Occasionally, however, a product may be produced offshore. Should you have need for special items not shown or listed, please contact us.



South Park
CORPORATION



FlameFighter



EZ Spanner

South Park Corporation
P.O. Box 61
South St. Paul, MN 55075

Toll-free: 1-800-728-0117
Toll-free fax: 1-800-373-1326
spcbrass.com