

WHELEN[®]

2015 Police

Professional
Warning &
Illumination



OFFICIAL WARNING LIGHTS OF


WHELEN[®]

2015 Police

Professional
Warning &
Illumination



OFFICIAL WARNING LIGHTS OF


WHELEN[®]

2015 Police

Professional
Warning &
Illumination



OFFICIAL WARNING LIGHTS OF
NASCAR

All Whelen lenses & domes are hard-coated to minimize environmental damage from sand, sun, salt, and road chemicals

Table Of Contents

Lightbars 04-12

Dash & Deck 13-15

Lightheads 16-27

Traffic Advisor™ 28

Motorcycle 29

Sirens & Speakers 30-35

Controls & Switches 36

Flashers 37

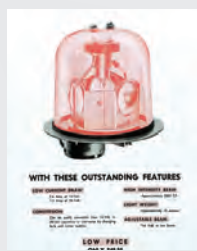
Certifications 38

Alphabetical Index 39



History of Whelen Engineering Company, Inc.

1952-1978



1952 George W. Whelen invents the first rotating aircraft "anti-collision" beacon in his garage in Deep River, Connecticut.



1956 The Rota-Beam™, a rotating magnetic mounted automotive beacon is developed for use by Police, Public Works and Fire departments.

1963 Whelen becomes the first in the industry to utilize strobe light technology.

1968 Whelen moves from the garage workshop on Kirtland Street to a facility on Winter Avenue in Deep River.

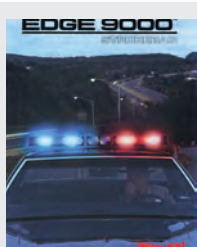


1975 Whelen releases its first fully enclosed lightbar, the 6000 Series.



1978 The 8000 Series, a strobe enclosed crossbar, is released.

1983-1998



1983 Whelen introduces the low profile Edge 9000®, the first fully enclosed lightbar with an aluminum I-Beam construction.

1984 Whelen moves from Deep River, Connecticut to its current Corporate Headquarters in Chester, Connecticut.

1987 A second manufacturing plant is added in Charlestown, New Hampshire.

1988 Transformer winding is introduced, using automated winding machines in order to increase part supply.

The tool and die machine shop begins as a servicing shop for parts before they are run in molding. Today, 90% of all molding tools are made in-house from raw steel.

1991 The New Hampshire plant expands to house plastic injection molding equipment, which manufactures all plastic parts, from optical grade polycarbonate to thermally conductive composites.



1998 FastTrax™, a lightbar designed to fit the contours of the Pontiac Grand Prix pace car, is released for the 50th anniversary of NASCAR®.

2000-2008

2000 Whelen introduces the Liberty™, the first all LED lightbar.



2003 Whelen implements surface mount technology, in which electric components are deposited on PCB utilizing robotic nozzles. All testing and programming of PCB is done in a continuous automated line.

2004 Whelen develops the Pioneer™ all LED floodlight for Fire Truck and Ambulance applications.



2005 Whelen becomes the entitlement sponsor of the NASCAR® Whelen Modified Tour and the NASCAR Whelen Southern Modified Tour. Whelen also begins sponsorship as the Official Warning Lights of NASCAR.



2007 Sheet metal fabrication is implemented, utilizing lasers to create brackets and a wide variety of metal components used in almost every Whelen product. A 5 axis laser is used to cut complex metal parts that do not come in a flat sheet.

Whelen becomes the entitlement sponsor of the NASCAR Whelen All American Series.

2008 Powder coating technology is implemented, which uses an automated line including washing, drying, applying powder, and oven baking.

2011-2015

2011 The production machine shop opens, housing 26 machines, 5 axis mills, lathes with live tooling, and screw machines. Parts made from raw housing or machined casting go into many finished products.

Hard coating technology develops, which utilizes an automated line where UV, abrasion, and chemical resistant coating is applied to all plastic lensing.

2012 Vacuum metalizing technology develops. Within a sealed chamber, all reflectors are coated with a thin layer of pure vaporized aluminum. Bringing this process in-house yields a 10% increase in light output due to improved surface quality and purity.

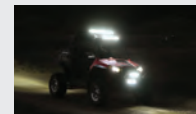
2012 Silicone molding is implemented. Still a liquid injected molding process, silicone allows for use of parts that need to be flexible and water resistant. This material is often utilized to make a watertight seal in an assembly.

2013 The next generation Rota-Beam is released. Whelen becomes the entitlement sponsor of the NASCAR Whelen Euro Series.



2014 Whelen opens the only environmentally friendly printed circuit board manufacturing facility in North America with zero hazardous emissions.

Whelen enters the Off-Road market with the Continuum™ Super-LED lightbar.



2015 Action Express Racing fields the No. 31 Whelen Corvette Daytona Prototype in the 2015 IMSA TUDOR United Sports Car Championship season.



Super-LED® Lightbar

Legacy® Series



SOLO™

FEATURES

- Single color Linear Super-LED®
- Advanced Thermal Design reduces the stress on LEDs during extended dwell time
- One piece UNI-DOME construction with a single sealing point assures lightbar integrity in all weather conditions
- Hard-coated lenses resist environmental damage from sand, sun, salt, and road chemicals
- Plug & Play into Whelen WeCan® controllers
- Clear outer lenses standard (available with Smoked or color lenses)
- Optional photocell automatically dims the lightbar at night and still meets SAE Class 1 requirements in low power mode
- Optional Traffic Advisor™ available in single or DUO™ color
- Many options available; consult current price list or WeCad™ build-a-bar software
- Five year HDP® Heavy-Duty Professional warranty

SPECS

- 12 VDC
- SOLO Corner Amps - 1.26/peak and 0.50/avg per corner
- **SAE Class 1 Certified**
- Size: 1-5/8" (41mm) H x 11-5/16" (287mm) D

MODELS



Legacy WeCan, Single Color	
GS4****	43-1/4" (110cm), one color
GS8****	48" (123cm), one color
GS2****	53-3/4" (136cm), one color



Replace * symbol in model number with letter indicating color desired: A=Amber, B=Blue, R=Red, C=White

Additional models and options available, consult price list and/or WeCad™ software

WeCad is a lightbar designer which allows you to design your own custom lightbar. Once finished, WeCad will generate a bill of materials from which you can place your order. The program is available at: www.whelen.com

DUO+™

FEATURES

- All warning lighthoods are true DUO+, whether one color or two. Each segment can be operated independently or at the same time, without loss of intensity
- Advanced Thermal Design reduces the stress on LEDs during extended dwell time
- One piece UNI-DOME construction with a single sealing point assures lightbar integrity in all weather conditions
- Hard-coated lenses resist environmental damage from sand, sun, salt, and road chemicals
- Photocell is optional
- Plug & Play into Whelen WeCan® controllers
- Clear outer lenses standard (available with Smoked lenses)
- Optional Traffic Advisor™ available in single or DUO™ color
- Many options available; consult current price list or WeCad build-a-bar software
- Five year HDP Heavy-Duty Professional warranty

SPECS

- 12 VDC
- DUO Corner Amps (each color) - 3/peak and 1.8/avg per corner
- **SAE Class 1 Certified**
- Size: 1-5/8" (41mm) H x 11-5/16" (287mm) D

MODELS



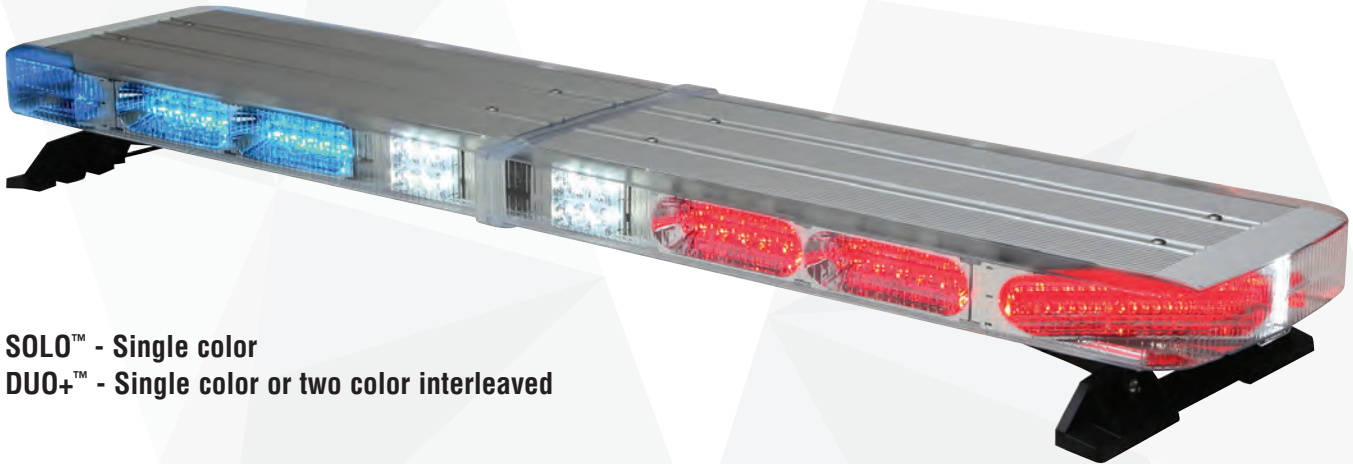
Legacy WeCan, DUO+ Color	
GB4****	43-1/4" (110cm), one color
GB4####	43-1/4" (110cm), two color
GB8****	48" (123cm), one color
GB8####	48" (123cm), two color
GB2****	53-3/4" (136cm), one color
GB2####	53-3/4" (136cm), two color



Replace * symbol in model number with letter indicating color desired: A=Amber, B=Blue, R=Red, C=White
 Replace # in model number with interleaved color desired D=Red/White, E=Blue/White, F=Amber/White, J=Red/Blue, K=Red/Amber, M=Blue/Amber

Super-LED® Lightbar

Liberty™ II Series (Patent Pending)



SOLO™ - Single color
DUO+™ - Single color or two color interleaved

FEATURES

- SOLO models available in Low Current or WeCan®, DUO+ models available in WeCan
- Advanced Thermal Design reduces the stress on LEDs during extended dwell time
- Aluminum top repels hail and other environmental damages
- Center dividers with Liquid Injection Molded seals protect internal components from water intrusion
- One piece UNI-DOME construction with a single sealing point assures lightbar integrity in all weather conditions
- Hard-coated lenses resist environmental damage from sand, sun, salt, and road chemicals
- Plug & Play into Whelen or vehicle manufactured controllers (WeCan only)
- Available with standard or low profile mounting feet
- Available with Clear, Smoked, or color lenses
- Optional photocell automatically dims the lightbar at night and still meets SAE Class 1 requirements in low power mode
- Many options available; consult current price list or WeCad™ build-a-bar software
- Five year HDP® Heavy-Duty Professional warranty

SPECS

- 12 VDC
- SOLO Corner Amps - 2/peak and 0.80/avg per corner
- DUO+ Corner Amps (each color) - 3/peak 1.2/avg per corner
- **SAE Class 1 Certified**
- Size: 2-1/2" (64mm) H x 11-5/16" (287mm) D

MODELS



Liberty II SOLO Low Current, Single Color	
IX4****	44" (110cm) Single Color, Red, Blue, Amber or White
IX8****	48" (123cm) Single Color, Red, Blue, Amber or White
IX2****	54" (136cm) Single Color, Red, Blue, Amber or White
Liberty II SOLO WeCan, Single Color	
IW4****	44" (110cm) Single Color, Red, Blue, Amber or White
IW8****	48" (123cm) Single Color, Red, Blue, Amber or White
IW2****	54" (136cm) Single Color, Red, Blue, Amber or White



Liberty II DUO+ WeCan, Single Color	
IB4****	44" (110cm) Single Color, Red, Blue, Amber or White
IB8****	48" (123cm) Single Color, Red, Blue, Amber or White
IB2****	54" (136cm) Single Color, Red, Blue, Amber or White
Liberty II DUO+ WeCan, DUO+ color	
IB4####	44" (110cm) DUO+ Color, Red, Blue, Amber or White
IB8####	48" (123cm) DUO+ Color, Red, Blue, Amber or White
IB2####	54" (136cm) DUO+ Color, Red, Blue, Amber or White

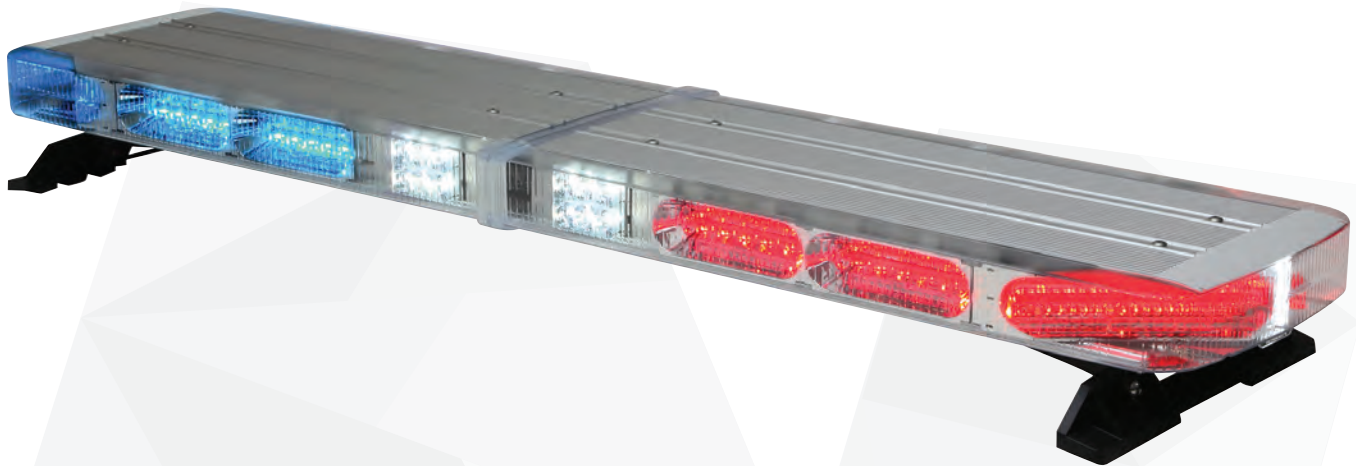


Replace * symbol in model number with letter indicating color desired: A=Amber, B=Blue, R=Red, C=White
 Replace # in model number with interleaved color desired D=Red/White, E=Blue/White, F=Amber/White, J=Red/Blue, K=Red/Amber, M=Blue/Amber

WeCad is a lightbar designer which allows you to design your own custom lightbar. Once finished, WeCad will generate a bill of materials from which you can place your order. The program is available at: www.whelen.com

Super-LED® Lightbar

NEW Liberty™ II TRIO™ Series



FEATURES

- Available in preconfigured combinations
- Includes four corner TRIO Modules, alley lights, and Clear lenses
- 44" and 48" lightbar features 10 inboard modules and two 3-LED take-down lights
- 54" Lightbar features 14 inboard modules and two 3-LED take-down lights
- Advanced Thermal Design reduces the stress on LEDs during extended dwell time
- Aluminum top repels hail and other environmental damages
- Center dividers with Liquid Injection Molded seals protect internal components from water intrusion
- One piece UNI-DOME construction with a single sealing point assures lightbar integrity in all weather conditions
- Hard-coated lenses resist environmental damage from sand, sun, salt, and road chemicals
- Plug & Play into Whelen WeCan® controllers
- Available with standard or low profile mounting feet
- Available with Clear or Smoked lenses
- Optional Photocell automatically dims the lightbar at night and still meets SAE Class 1 requirements in low power mode
- Five year HDP® Heavy-Duty Professional warranty

SPECS

- 12 VDC
- TRIO Corner Amps (each color) - 1.5/peak and 0.60/avg per corner
- **SAE Class 1 Certified**
- Size: 2-1/2" (64mm) H x 11-5/16" (287mm) D

MODELS



Liberty II TRIO1 Red/Blue with White Illumination	
I341	44" (110cm)
I381	48" (123cm)
I321	54" (136cm)



Liberty II TRIO4 Red/Blue with Amber Traffic Advisor and Green Command Corners and White Illumination Front Inboard	
I344	44" (110cm)
I384	48" (123cm)
I324	54" (136cm)



Liberty II TRIO2 Red/Blue with Amber Traffic Advisor™ and White Illumination	
I342	44" (110cm)
I382	48" (123cm)
I322	54" (136cm)



Liberty II TRIO5 Red/Blue with White Illumination to the Front and Rear Corners and Red/Blue/Amber Rear Inboards	
I345	44" (110cm)
I385	48" (123cm)
I325	54" (136cm)



Liberty II TRIO3 Red/Blue with Green Command Corners and White Illumination Inboard	
I343	44" (110cm)
I383	48" (123cm)
I323	54" (136cm)



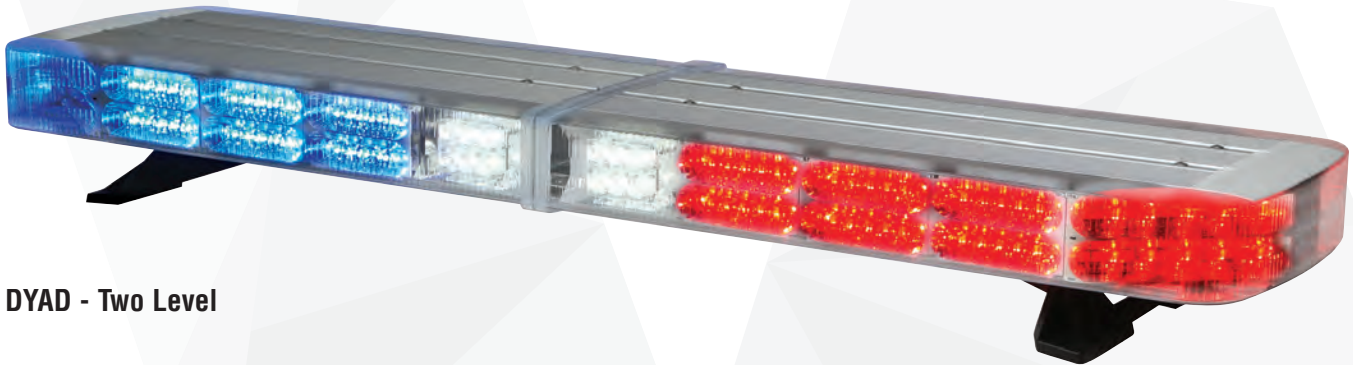
Liberty II TRIO6 Red/Blue with Green Command Corners and White Illumination Front Inboards and Red/Blue/Amber Rear Inboards	
I346	44" (110cm)
I386	48" (123cm)
I326	54" (136cm)



WeCad is a lightbar designer which allows you to design your own custom lightbar. Once finished, WeCad will generate a bill of materials from which you can place your order. The program is available at: www.whelen.com

Super-LED® Lightbar

NEW Freedom® IV DYAD™ Series



DYAD - Two Level

FEATURES

- Linear Super-LED technology
- WeCan® DYAD two level technology (single or two color) allows for individual control of each level of each lighthead
- Low Current DYAD two level technology (single color) allows for individual control of each lighthead segment (2x2)
- Add up to 16 optional Linear Super-LED directional modules
- Advanced Thermal Design reduces the stress on LEDs during extended dwell time
- Aluminum top repels hail and other environmental damages
- Center dividers with Liquid Injection Molded seals protect internal components from water infiltration
- One piece UNI-DOME construction with a single sealing point assures lightbar integrity in all weather conditions
- 100% solid-state electronics
- Available with Clear or Smoked lenses
- Hard-coated lenses resist environmental damage from sand, sun, salt, and road chemicals
- Plug & Play into Whelen or vehicle manufactured controllers (WeCan® only)
- 17' passenger side cable
- Optional photocell automatically dims the lightbar at night and still meets SAE Class 1 requirements in low power mode
- Many options available; consult current price list or WeCad™ build-a-bar software
- Five year HDP® Heavy-Duty Professional warranty

MODELS

Freedom IV DYAD, Low Current	
F4X4****	44-1/2" (113cm)
F4X8****	49-1/4" (125cm)
F4X2****	55" (140cm)
F4X0****	60" (152cm)
F4X7****	72" (183cm)

Freedom IV DYAD, WeCan	
F4W4****	44-1/2" (113cm)
F4W8****	49-1/4" (125cm)
F4W2****	55" (140cm)
F4W0****	60" (152cm)
F4W7****	72" (183cm)



Replace * symbol in model number with letter indicating color desired:
A=Amber, B=Blue, R=Red, C= White

WeCad is a lightbar designer which allows you to design your own custom lightbar. Once finished, WeCad will generate a bill of materials from which you can place your order. The program is available at: www.whelen.com

SPECS

- 12 VDC
- Amps - 1.68/peak and 0.67/avg per corner
- **SAE Class 1 Certified**
- Size: 3-3/4" (95mm) H x 12-1/2" (318mm) D

Super-LED® Lightbar

Justice® WeCan® Series



FEATURES

- Available with 9 or 6 diode Linear-LED® corners
- Individual control of each lighthouse
- Plug & Play into Whelen WeCan® or vehicle manufactured controllers
- Extruded aluminum platform and Black polycarbonate base for added strength
- Hard-coated lenses resist environmental damage from sand, sun, salt, and road chemicals
- Easily upgraded or serviced in the field
- 15' passenger side exit cable
- Available with Clear, Smoked, or color lenses
- Many options available, consult price list and/or WeCad™ build-a-bar software
- Five year HDP® Heavy-Duty Professional warranty

SPECS

- 12 VDC
- 9 diode Linear-LED® Corner Amps, 1.5/peak and 0.6/avg per corner
- 6 diode Linear-LED Corner Amps, 1/peak and 0.4/avg per corner
- SAE Class 1 Certified
- Size: 2-1/4 (57mm) H x 12" (304mm) D

MODELS

Justice WeCan, 9 diode Linear-LED Corners	
JV4****	44" (112cm)
JV8****	50-1/8" (132cm)
JV2****	56-1/4" (152cm)
JV0****	62-3/8" (158cm)

Justice WeCan, 6 diode Linear-LED Corners	
JY4****	44" (112cm)
JY8****	50-1/8" (132cm)
JY2****	56-1/4" (152cm)
JY0****	62-3/8" (158cm)



Replace * symbol in model number with letter indicating color desired:
 A=Amber, B=Blue, R=Red, C= White

WeCad is a lightbar designer which allows you to design your own custom lightbar. Once finished, WeCad will generate a bill of materials from which you can place your order. The program is available at: www.whelen.com

Super-LED® Lightbar

NEW Inner Edge® RTX Series



- SOLO™** - Single color
- DUO+™** - Two color interleaved
- TRIO™** - Three color interleaved

FEATURES

- Available with SOLO, DUO+, or TRIO interleaved Linear-LED® light modules
- Drop-in lighthouse tray is universal, allowing for easy serviceability
- Vehicle specific housing minimizes flashback to vehicle passengers
- Meets SAE Class 1 and California Title XIII specifications
- Extra low profile, fully featured interior lightbars designed to blend with vehicles existing interior
- Hard-coated lenses minimize UV damage and resist scratches
- Five year HDP® Heavy-Duty Professional warranty

RTX Trays	
ISTRAY6	6 Lamp Tray for SOLO lighthoods
ISTRAY8	8 Lamp Tray for SOLO lighthoods
IDTRAY6	6 Lamp Tray for DUO lighthoods
IDTRAY8	8 Lamp Tray for DUO lighthoods
ITTRAY6	6 Lamp Tray for TRIO lighthoods
ITTRAY8	8 Lamp Tray for TRIO lighthoods

RTX Lighthoods	
IES*	One SOLO lighthouse, Red, Blue, Amber, or White
IED#	One DUO+ lighthouse, Red, Blue, Amber, and/or White
IETRBA	One TRIO lighthouse, Red/Blue/Amber
IETRCA	One TRIO lighthouse, Red/White/Amber
IETBCA	One TRIO lighthouse, Blue/White/Amber
IETRBC	One TRIO lighthouse, Red/Blue/White



Replace * symbol in model number with letter indicating color desired: A=Amber, R=Red, B=Blue, C=White
 Replace # in model number with interleaved color desired D=Red/White, E=Blue/White, F=Amber/White, J=Red/Blue, K=Red/Amber, M=Blue/Amber

MODELS

Vehicle Specific Housing and Mounts	
IE37LR8	Chevy Caprice, 2011-2015, lower rear housing for six or eight modules
IE37LRZ	Chevy Caprice, 2011-2015, lower rear housing for ten modules
IE46LR8	Chevy Impala, 2014-2015, lower rear housing for six or eight modules
IE46LRZ	Chevy Impala, 2014-2015, lower rear housing for ten modules
IE45UR8	Chevy Tahoe/Suburban, 2015, upper rear housing for six or eight modules
IE35LR8	Dodge Charger, 2011-2015, lower rear housing for six or eight modules
IE35LRZ	Dodge Charger, 2011-2015, lower rear housing for ten modules
IE34UR8	Ford Explorer, 2011-2016, Ford Police Interceptor Utility, 2013-2016, upper rear housing for six or eight modules
IE38LR8	Ford Taurus, 2011-2015, Ford Police Interceptor Sedan, 2013-2015, lower rear housing for six or eight modules
IE38LRZ	Ford Taurus, 2011-2015, Ford Police Interceptor Sedan, 2013-2015, lower rear housing for ten modules

Super-LED® Lightbar

Inner Edge® XLP Series



MODELS

Ford					
Fusion, 2013-2015	Taurus, 2011-2015, Police Interceptor Sedan, 2013-2015	Explorer, 2011-2016, Police Interceptor Utility, 2013-2016	F-150, 2015	F-250/F-350, 2012-2015	Expedition, 2013-2015
Upper Front Series - 3-LED - Low Current					
Five lamp, upper front passenger side unit only, with one LED flashing/take-down					
IX43UF5P	IX38UF5P	IX34UF5P	IX47UF5P	IX39UF5P	IX08UF5P
Six lamp, upper front passenger side unit only (no take-down)					
IX43UF6P	IX38UF6P	IX34UF6P	IX47UF6P	IX39UF6P	IX08UF6P
Ten lamp, upper front two piece unit, individual driver and passenger side units, with two LED flashing/take-downs					
IX43UFZ	IX38UFZ	IX34UFZ	IX47UFZ	IX39UFZ	IX08UFZ
Twelve lamp, upper front two piece unit, individual driver and passenger side units (no take-downs)					
IX43UFX	IX38UFX	IX34UFX	IX47UFX	IX39UFX	IX08UFX
● ● ● ○					
DUO 6-LED Upper Front Series - WeCan®					
Six 6-LED DUO lamps, upper front passenger side unit only					
IW43UF6P	IW38UF6P	IW34UF6P	IW47UF6P	IW39UF6P	IW08UF6P
Twelve 6-LED DUO lamps, upper front two piece unit, individual driver and passenger side units					
IW43UFX	IW38UFX	IW34UFX	IW47UFX	IW39UFX	IW08UFX
● ● ● ● ● ●					
DUO 6-LED Upper Front Series - Low Current					
Six 6-LED DUO lamps, upper front passenger side unit only					
ID43UF6P	ID38UF6P	ID34UF6P	ID47UF6P	ID39UF6P	ID08UF6P
Twelve 6-LED DUO lamps, upper front two piece unit, individual driver and passenger side units					
ID43UFX	ID38UFX	ID34UFX	ID47UFX	ID39UFX	ID08UFX
● ● ● ● ● ●					

Inner Edge® XLP Series

FEATURES

- **NEW** 2015 Ford F-150 models now available
- Extra low profile, fully featured interior lightbars designed to blend with vehicles existing interior
- Available in 3-LED and 6-LED DUO™ models
- DUO technology features your choice of warning color interleaved with White illumination in each light module
- Available in WeCan® or Low Current controlled models
- WeCan offers individual control of each warning portion of each module and controls groups of three White take-down light portions of the module. Low Current offers individual control of the warning or the take-down
- Meets SAE Class 1 and California Title XIII specifications
- Hard-coated lenses minimize UV damage and resist scratches
- Requires customer supplied switches or control head, purchased separately
- Five year HDP® Heavy-Duty Professional warranty

WeCad is a lightbar designer which allows you to design your own custom lightbar. Once finished, WeCad will generate a bill of materials from which you can place your order. The program is available at: www.whelen.com

Chevrolet			Dodge		
Caprice, 2001-2015	Impala SSV & PPV, 2014-2015	Suburban/ Tahoe, 2015, Silverado 1500/2500/ 3500, 2014-2015	Charger 2011-2015	Dodge Ram, 2011-2015	Dodge Durango, 2013-2015
Upper Front Series - 3-LED - Low Current					
Five lamp, upper front passenger side unit only, with one LED flashing/take-down					
IX37UF5P	IX46UF5P	IX45UF5P	IX35UF5P	IX42UF5P	IX44UF5P
Six lamp, upper front passenger side unit only (no take-down)					
IX37UF6P	IX46UF6P	IX45UF6P	IX35UF6P	IX42UF6P	IX44UF6P
Ten lamp, upper front two piece unit, individual driver and passenger side units, with two LED flashing/take-downs					
IX37UFZ	IX46UFZ	IX45UFZ	IX35UFZ	IX42UFZ	IX44UFZ
Twelve lamp, upper front two piece unit, individual driver and passenger side units (no take-downs)					
IX37UFX	IX46UFX	IX45UFX	IX35UFX	IX42UFX	IX44UFX
● ● ● ○					
DUO 6-LED Upper Front Series - WeCan					
Six 6-LED DUO lamps, upper front passenger side unit only					
IW37UF6P	IW46UF6P	IW45UF6P	IW35UF6P	IW42UF6P	IW44UF6P
Twelve 6-LED DUO lamps, upper front two piece unit, individual driver and passenger side units					
IW37UFX	IW46UFX	IW45UFX	IW35UFX	IW42UFX	IW44UFX
● ● ● ● ● ●					
DUO 6-LED Upper Front Series - Low Current					
Six 6-LED DUO lamps, upper front passenger side unit only					
ID37UF6P	ID46UF6P	ID45UF6P	ID35UF6P	ID42UF6P	ID44UF6P
Twelve 6-LED DUO lamps, upper front two piece unit, individual driver and passenger side units					
ID37UFX	ID46UFX	ID45UFX	ID35UFX	ID42UFX	ID44UFX
● ● ● ● ● ●					

Super-LED® Lightbar

Outer Edge® Series



OE45UR6



RP34

FEATURES

- Available in Red, Amber, Blue, or White
- Lighthoods are fully encapsulated for moisture, vibration, and corrosion resistance
- Hard-coated lenses resist environmental damage from sand, sun, salt, and road chemicals
- Meets or exceeds SAE J845, SAE J595, and California Title XIII specifications
- Five year HDP® Heavy-Duty Professional warranty

Rear Facing

- Two independent powder coated housings mount easily to the rear spoiler with screws
- Each housing supports three Micron™ lighthoods
- Traffic Advisor™ models include a control module

Rear Pillar

- Vehicle specific vacuum formed housings conform to vehicle back pillars
- Three Micron™ lighthoods mount above each brake/tail/turn assembly

MODELS

Model	Series	Type	Lighthoods	Vehicle	VDC	Patterns
OE45UR6	Rear Facing	Warning	3 Micron lighthoods per section	Chevy Tahoe, 2015	12	25 Scan-Lock™
OE34UR6				Ford Explorer, 2011-2016 Police Interceptor Utility, 2013-2016		
OE45UR6T		Traffic Advisor		Chevy Tahoe, 2015		
OE34UR6T				Ford Explorer, 2011-2016 Police Interceptor Utility, 2013-2016		
RP45	Rear Pillar**	Warning		Chevy Tahoe, 2015		

Option	Option Description
OEMCRN*	Warning Lighthouse
OEMCTA*	Traffic Advisor Lighthouse



Replace * symbol in model number with letter indicating color desired: A=Amber, R=Red, B=Blue, C=White

Note: All Outer Edge orders require a corresponding Outer Edge worksheet which can be provided by your sales representative or local distributor

** Note: Not yet available for 2016 Ford Explorer or Police Interceptor Utility

Dash & Deck

Avenger™ Series

- SAE Class 1 Certified
- **NEW** Avenger TRIO™ features three different color LEDs in the same module, providing the widest variety of color combinations available, including steady-burn override
- **NEW** Dual Avenger with two LR11 take-downs
- Single or dual Linear Super-LED® interior light
- Snap-on polycarbonate hood
- Hard-coated lenses minimize UV damage and resist scratches
- Mounts via swivel/bail bracket with three suction cups
- AVN models include 10' cord with cigar plug with On/Off switch and pattern selection switch
- AVNS models include a pigtail for syncing multiple lights, and Scan-Lock™ flash pattern control
- Available in Amber, Red, Blue, and White
- Five year HDP® Heavy-Duty Professional warranty



Model	Lamp	Colors	Cable	Amps	VDC	Patterns	Size (with shroud)
AVN1*	Single	R,B,A,W	Cigar plug	0.95	12	27 Scan-Lock	2" (50mm) H x 5-1/2" (140mm) D x 5" (127mm) L
AVN1#		R,B,A,W Split		0.70/Alternating 1.4/Simultaneous		54 Scan-Lock	
AVN2**	Dual	R,B,A,W		1/Alternating 2/Simultaneous		34 Scan-Lock	2" (50mm) H x 5-1/2" (140mm) D x 9-3/4" (248mm) L
AVNS1*	Single		Synchronized w/ 4 wire pigtail	0.95		69 Scan-Lock	2" (50mm) H x 5-1/2" (140mm) D x 5" (127mm) L
AVNS2**	Dual			1/Alternating 2/Simultaneous		26 Scan-Lock	2" (50mm) H x 5-1/2" (140mm) D x 9-3/4" (248mm) L
AVNT1RBW	Single		R/B/W; W override	Cigar plug		0.40	55 Scan-Lock
AVNT1RBA		R/B/A; A override					
AVNT1RAW		R/A/W; W override					
AVNT1BAW		B/A/W; W override					
AVNT2RBW	Dual	R/B/W; W override	Cigar plug	0.80		53 Scan-Lock	2" (50mm) H x 5-1/2" (140mm) D x 9-3/4" (248mm) L
AVNT2RBA		R/B/A; A override					
AVNT2RAW		R/A/W; W override					
AVNT2BAW		B/A/W; W override					
AVN2LRBB		B/B with W take-downs					
AVN2LRRB		R/B with W take-downs					
AVN2LRRC	R/W with W take-downs						
AVN2LRRR	R/R with W take-downs	0.76/Warning 0.75/Take-downs					

Replace * symbol in model number with letter indicating color desired: A=Amber, R=Red, B=Blue, C=White
 Replace # in model number with interleaved color desired D=Red/White, E=Blue/White, F=Amber/White, J=Red/Blue,
 K=Red/Amber, M=Blue/Amber



Option	Option Description
AVNBKT1	Low profile mounting bracket for AVN1/AVNS1/AVNT1
AVNBKT2	Low profile mounting bracket for AVN2/AVNS2/AVNT2

Option	Option Description
AVNBKT3	Visor mounting bracket (2 required for dual unit)
AVNBKT4	Adjustable height bracket kit for all models

Dash & Deck

SpitFire™ Series

- SAE Class 1 Certified
- ION™ Super-LED® interior dash and deck light
- Fully encapsulated for moisture, vibration, and corrosion resistance
- Hard-coated lenses minimize UV damage and resist scratches
- Includes universal bracket, windshield suction cup mount
- Includes integral hood and 10' cord with cigar plug, On/Off switch with LED "On" indicator, and Scan-Lock™ pattern control switch
- Five year HDP® Heavy-Duty Professional warranty



Model	Technology	Amps	VDC	Patterns	Size
SFION*	Super-LED	0.46/avg 1/peak	12	25 Scan-Lock single color	1-5/8" (41mm) H x 3-3/8" (86mm) D x 5-1/8" (130mm) W
SFION#				69 Scan-Lock split color	

Replace * symbol in model number with letter indicating color desired: A=Amber, B=Blue, R=Red, C=White, G=Green
 Replace # in model number with split color desired: D=Red/White, E=Blue/White, J=Red/Blue



FlatLighter™ Series

- Visor mount interior light
- Includes Velcro mounting straps
- Includes 8' straight cord with cigar plug
- Hard-coated lenses minimize UV damage and resist scratches
- Available in Amber, Red, Blue, and White
- Five year HDP Heavy-Duty Professional warranty



Model	Technology	Amps	VDC	Patterns	Size
FLLED**	LED	0.8	12	21 Scan-Lock	4-1/2" (114mm) H x 1-1/4" (32mm) D x 13" (330mm) L

Replace * symbol in model number with letter indicating color desired: A=Amber, R=Red, B=Blue, C=White



Option Model	Option Description
43LENS	400 Series color lens, customer installed

Dash & Deck

Dominator™ & Dominator Plus™ Series

- SAE Class 1 Certified
- Low profile surface mount housing designed for interior or exterior use
- Choice of TIR3™ or LINZ6™ modules
- Fully encapsulated for moisture, vibration, and corrosion resistance
- Internal self-contained electronics
- Hard-coated lenses resist environmental damage from sand, sun, salt, and road chemicals
- Slide bolt mount
- Extruded aluminum Black powder coated housing
- Available in Amber, Red, Blue, and White
- 12 VDC
- Five year HDP® Heavy-Duty Professional warranty

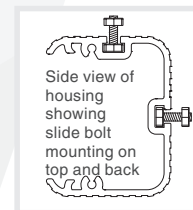


Model	Series	Technology	Lamps	Amps	Patterns	Mounting	Size	Length		
DP2**	Dominator Plus	LINZ6 Super-LED	2	0.30/avg 0.75/peak per lamp	7 Scan-Lock™	Slide bolt	1-3/16" (35mm) H x 2-3/16" (55mm) D	7" (178mm)		
DP4****			4		10 Scan-Lock			14" (356mm)		
DP6*****			6					21" (533mm)		
DP8§§§§0			8		28" (711mm)					
D2**	Dominator	TIR3 Super-LED	2	0.16/avg 0.4/peak per lamp	7 Scan-Lock			Slide bolt	1-3/16" (35mm) H x 2-3/16" (55mm) D	7" (178mm)
D4****			4		10 Scan-Lock					14" (356mm)
D6*****			6							21" (533mm)
D8§§§§0			8		28" (711mm)					

Replace * symbol in model number with letter indicating color desired: A=Amber, B=Blue, R=Red, C=White
 Replace § symbol with number of color lightheads required. Order of colors are Red, Blue, Amber and White



Option Model	Option Description
DBKT3	Swivel mount bracket kit for D2, D4, DP2, DP4 Series only, customer installed
DBKT4	"L" angle mounting bracket kit, customer installed
DBKT5	Upper rear window bracket for Chevy Tahoe, 2008-2013 and Police Interceptor Utility, 2013-2016
DBKT6	Hatch mount bracket for 2008-2013 Chevy Tahoe, interior mount, D8 & DP8 only



Lightheads

Vertex™ Series

- Self-contained light with in-line lamp driver
- Designed to mount in composite style headlight or taillight, or surface mount to exterior surfaces with flange mount option
- VHB models for factory prepped Ford Interceptor Sedans and SUVs
- Fully encapsulated for moisture, vibration, and corrosion resistance
- Hard-coated lenses resist environmental damage from sand, sun, salt, and road chemicals
- Integrate with other Whelen products through synchronize feature
- Clear outer lens, color LEDs
- **NEW** Go undercover with all new Smoked lenses. Consult price list for details
- Five year HDP® Heavy-Duty Professional warranty



Model	Optic	Technology	Mount	Color	VDC	FPM	Amps	Cable	Size
VTX609*	Omni-directional	Super-LED®	1" Hole recess or Surface <small>(Mounting Purchased separately)</small>	R, B, A, and/or W	12	25 Scan-Lock™	.750/peak .30/avg	9'	1" (26mm) H x 1-5/8" (41mm) Dia.
VTX609#									
VTXD609*	Directional/side emitting shield								
VTXD609#									
VTX3609*	360° side emitter								
VTX3609#									
VHB609*	Omni-directional	Surface							
VHB609#									

Replace * symbol in model number with letter indicating color desired: A=Amber, B=Blue, C=White, R=Red
 Replace # in model number with letter indicating split color desired: D=Red/White, E=Blue/White, F=Amber/White, J=Red/Blue, K=Red/Amber, M=Blue/Amber



Option Model	Option Description
VTXFC	Chrome flange
VTXFB	Black flange

Micron™ Series

- **NEW** Stud mount Micron allows for easy and simple surface mount installation
- Fully encapsulated for moisture, vibration, and corrosion resistance
- Hard-coated lenses resist environmental damage from sand, sun, salt, and road chemicals
- Integrate with other Whelen products through synchronize feature
- **NEW** Go undercover with all new, SAE Class 1 Certified Smoked lenses. Consult price list for details
- Five year HDP Heavy-Duty Professional warranty



Model	Technology	Mount	Color	Lens	Flange	VDC	Amps	Patterns	Cable	Size	
MCRNS*	Linear Super-LED	Surface	A, R, B, W	Clear	Black	12	0.6/peak 0.24/avg	25 Scan-Lock	6" Pigtail	7/8" (23mm) H x 7/8" (23mm) D x 4" (102mm) L	
MCRNSC*					Chrome						
MCRNSK			A/R		Black						
MCRNSJ			B/R								
MCRNSD			W/R		Chrome						
MCRNSCK			A/R								
MCRNSCJ			B/R								
MCRNSCD			W/R								
MCRNT*			Stud		A,R,B,W,						-
MCRNT#					A/R, B/R, W/R						

Replace * symbol in model number with letter indicating color desired: A=Amber, B=Blue, C=White, R=Red
 Replace # in model number with letter indicating split color desired: D=Red/White, E=Blue/White, J=Red/Blue, K=Amber/Red



Option Model	Option Description
MCRNB1	Black angle "L" mounting bracket
MCRNB2	NEW License plate bracket for two lights

Lightheds

ION™ Series

- Hard-coated lenses resist environmental damage from sand, sun, salt, and road chemicals
- Integrate with other Whelen products through synchronize feature
- **NEW** Go undercover with all new, SAE Class 1 Certified Smoked lenses. Consult price list for details
- Five year HDP® Heavy-Duty Professional warranty

ION & WION

- ION models feature TIR directional optics
- WION models feature wide-angle optics
- Available in single or split colors
- Includes steady-burn, alternating, and simultaneous patterns

NEW ION DUO™ & TRIO™

- Interleaved technology and new Linear-LED® optics
- DUO models feature independent control of color one and color two
- TRIO models feature any combination of color one, color two, or color three. Color three has steady-burn override



NEW Smoked lens shown unlit with Black flange



WIONSMR



IONB

Model	Optic	Technology	Mount	Color	Housing	VDC	Amps	Patterns	Cable	Certs	Size							
ION*	Directional	Super-LED®	Universal	A,R,B,W	Black	12	1/peak 0.40/avg	25 Scan- Lock™	6" Pigtail	B,C,D (A/B/R)	1" (25mm) H x 1-1/4" (32mm) D x 4" (101mm) L							
ION#				R/B, R/W, B/A						C,D (W)								
WION*	Wide-angle			A, R, B, W						B,C,D (A/R)								
WION#				R/B, R/W, B/A						B,C,D (B)								
IONSM*	Directional		Surface, includes flange	A,R,B,W						B,C,D (A/B/R)		1-11/16" (43mm) H x 1-1/8" (28mm) D x 5-15/16" (150mm) L						
IONSM#				R/B, R/W, B/A						C,D (W)								
WIONSM*	Wide-angle		Linear-LED	Universal						A,R,B,W			B,C,D (A/R)					
WIONSM#										R/B, R/W, B/A			B,C,D (B)					
I2#										A/W, B/W, R/W, B/R, B/A				1/peak 0.40/avg per color	69 Scan- Lock		B,C,D (A)	1" (25mm) H x 1-1/4" (32mm) D x 4" (101mm) L
I3#										R/B/W, R/B/A, R/A/W, B/A/W								

Replace * symbol in model number with letter indicating color desired: A=Amber, B=Blue, R=Red, C=White
 Replace # in model number with letter indicating split color desired: D=Red/White, J=Red/Blue, M=Blue/Amber



Option Model	Option Description
IONK1B	Swivel mount bracket, Black
IONGROM	Grommet mount kit
IONPEDB	Black pedestal mount

Option Model	Option Description
IONBKT1	License plate bracket for 2 lights
IONBKT2	Rear hatch bracket, 2013-2016 Ford Police Interceptor Utility for 6 lights
IONBKT4	Rear hatch bracket, 2013-2016 Ford Police Interceptor Utility for 2 lights
IONBKT5	Universal mount, reversed, remove screws without removing light
IONBKT6	Rear hatch bracket, 2015 Chevy Tahoe for 2 lights

Lightheds

ION™ V-Series™

- Available in 3-in-1 combination warning, alley/flood, and puddle light or in single color warning only models
- Single color models have combination 180° and TIR directional warning
- Includes steady-burn, alternating, and simultaneous patterns
- Black, White, or Chrome housing
- Hard-coated lenses resist environmental damage from sand, sun, salt, and road chemicals
- Integrate with other Whelen products through synchronize feature
- **NEW** Go undercover with all new, SAE Class 1 Certified Smoked lenses. Consult price list for details
- Five year HDP® Heavy-Duty Professional warranty



IONV3B

Model	Optic	Technology	Mount	Colors	Housing	VDC	Amps	Patterns	Cable	Certs	Size
IONV3*	V-Series	Linear Super-LED®	Universal	A, R, B, W warning with W illumination	Black	12	Warning 0.76, Alley 0.31, Puddle 0.12	25 Scan-Lock™	6" Pigtail	C,D	1" (25mm) H x 2-3/16" (56mm) D x 4-1/16" (104mm) L
IONV3*W					White						
IONSV3*			Surface, includes flange		Black						1-11/16" (43mm) H x 2" (50mm) D x 5-15/16" (150mm) L
IONSV3*W					White						
IONSV3*C					Chrome						
IONV1*	V-Series with directional	Linear and TIR Super-LED	Universal	A, R, B, W	Black	1.147					1" (25mm) H x 2-3/16" (56mm) D x 4-1/16" (104mm) L
IONV1*W					White						
IONSV1*			Surface, includes flange		Black						1-11/16" (43mm) H x 2" (50mm) D x 5-15/16" (150mm) L
IONSV1*W					White						
IONSV1*C					Chrome						

Replace * symbol in model number with letter indicating color desired: A=Amber, B=Blue, R=Red, C=White



Option Model	Option Description
IONK1B	Swivel mount bracket, Black
IONGROM	Grommet mount kit
IONPEDB	Pedestal mount, Black

Option Model	Option Description
IONBKT1	License plate bracket for 2 lights
IONBKT2	Rear hatch bracket, 2013-2016 Ford Police Interceptor Utility for 6 lights
IONBKT4	Rear hatch bracket, 2013-2016 Ford Police Interceptor Utility for 2 lights
IONBKT5	Universal mount, reversed, remove screws without removing light
IONBKT6	Rear hatch bracket, 2015 Chevy Tahoe for 2 lights

Lightheds

LINV2™ V-Series™

- Combination 180° warning and puddle light
- Includes Black flange
- Fully encapsulated for moisture, vibration, and corrosion resistance
- Hard-coated lenses resist environmental damage from sand, sun, salt, and road chemicals
- Includes steady-burn, alternating, and simultaneous patterns
- Integrate with other Whelen products through synchronize feature
- **NEW** Go undercover with all new, SAE Class 1 Certified Smoked lenses. Consult price list for details
- Five year HDP® Heavy-Duty Professional warranty



LINV2R



LINSV2B

Model	Optic	Technology	Mount	Color	VDC	Amps	Patterns	Cable	Certs	Size
LINV2*	V-Series	Linear Super-LED®	Horizontal, surface	A, R, B, W	12	0.75 Warning	25 Scan-Lock™	6" Pigtail	C, D (A)	1-1/2" (40mm) H x 1-5/8" (42mm) D x 3-7/8" (98mm) L
LINSV2*			Under surface mounting			0.12 Puddle				1-1/8" (28mm) H x 2-13/16" (71mm) D x 2-7/8" (73mm) L

Replace * symbol in model number with letter indicating color desired: A=Amber, B=Blue, R=Red, C=White



Option Model	Model	Option Description
RFLANGEC	LINV2	Chrome plated flange kit
RFLANG2C		Chrome plated dual flange, 2 lightheds
RFLANG2B		Black dual flange, 2 lightheds
RGROMMET		Grommet mount kit (except LINSV2)
RBKT1		Mounting bracket, 1 lighthouse
RBKT2		Mounting bracket, 2 lightheds
RBKT5		Under-the-side view mirror bracket, 18° downward housing, Chevy Tahoe, 2009-2013
RBKT6		License plate bracket, 2 lightheds, horizontal
RBKT7		License plate bracket, 2 lightheds, vertical
RBKT10		Trunk mount bracket, pair, Dodge Charger
RBKT11		Above rear taillight bracket, pair, Ford F-150, 2013-2014
RBKT12		Above rear taillight bracket, pair, Ford F-250/350/450/550, 2013-2015
RBKT14		Above rear taillight bracket, pair, Chevy Silverado/GMC 1500, 2014-2015
RBKT16		Trunk mount bracket, pair, Ford Police Interceptor Sedan, 2013-2015
RBKT17		Above rear taillight bracket, pair, Dodge Ram, 2014-2015

Option Model	Model	Option Description
LSVBKT13	LINSV2	Under-the-side view mirror mount, pair, Chevy Silverado, 1500/2500, 2014-2015
LSVBKT34		Under-the-side view mirror mount, pair, Ford Explorer, 2011-2016, Police Interceptor Utility, 2013-2016
LSVBKT35		Under-the-side view mirror mount, pair, Dodge Charger, 2011-2015
LSVBKT37		Under-the-side view mirror mount, pair, Chevy Caprice, 2011-2015
LSVBKT38		Under-the-side view mirror mount, pair, Ford Taurus, 2011-2015, Police Interceptor Sedan, 2013-2015
LSVBKT42		Under-the-side view mirror mount, pair, Dodge Ram 1500, 2011-2015
LSVBKT44		Under-the-side view mirror mount, pair, Dodge Durango, 2013-2015
LSVBKT45		Under-the-side view mirror mount, pair, Chevy Tahoe and Suburban, 2015

NOTE: Mounting available for Harley-Davidson® Motorcycles. Refer to current Price List or Whelen Motorcycle Brochure for more information

Lightheds

V23, M2, & M4 Series

- Available with a patented Linear-LED® designed reflector assembly
- **NEW** M4 combination warning and driving light
- Hard-coated lenses resist environmental damage from sand, sun, salt, and road chemicals
- Surface mount via two screws
- Lens and reflector are a sealed assembly
- M2 and M4 lightheds can integrate with other Whelen products through synchronize feature
- Built-in flasher models are synchronizable
- Includes California Title XIII compliant flash patterns
- M4 models available in 24 Volt, contact factory
- Five year HDP® Heavy-Duty Professional warranty



Model	Optic	Technology	Color	Lens	VDC	Flasher	Patterns	Amps	Certs	Size
V23*TPB	V-Series™ (includes Black flange)	Super-LED®	A, R, B, W warning with W illumination	Clear	12	Built-in	26 Scan-Lock™	Warning 0.76/peak 0.30/avg, Take-down 0.62, Perimeter 0.12	C, D	2-11/16" (68mm) H x 1-1/2" (38mm) D x 4-1/4" (109mm) L
V23*TPC	V-Series (includes Chrome flange)									
M2*	Directional		A, R, B, W	Color			69 Scan-Lock	1/peak 0.45/avg	B (R/A/B) C,D (R/A/B)	2-1/2" (64mm) H x 4" (102mm) W x 1" (25mm) D
M2*C				Clear						
M2#				R/A, R/B, R/W						
M2W*	Wide-angle		A, R, B, W	Color			125 Scan-Lock 64 Scan-Lock	1.5/peak 0.6/avg	B (A/B/W) C,D (R/A/B)	3-3/8" (86mm) H x 5-1/2" (138mm) W x 1-3/8" (35mm) D
M2W*C				Clear						
M2W#	R/A, R/B, R/W									
M4*	Directional		A, R, B, W	Color			Requires flasher (Purchased separately)	-	-	-
M4*C				Clear						
M4#				R/A, R/B, R/W						
M4*S				A, R, B, W						
M4*CS	Color									
M4DW*	W with R or B		Clear	A, R, B, W warning with W illumination			Built-in	50 Scan-Lock	Warning & driving 1.0/peak 0.40/avg	Pending
M4DWJ	W with R/B split									
M4V2*	V-Series		25 Scan-Lock	Warning 1.0/peak 0.40/avg, Perimeter 0.77			Pending	3-3/8" (86mm) H x 1-7/8" (47mm) D x 5-1/2" (138mm) L		

Replace * symbol in model number with letter indicating color desired: A=Amber, B=Blue, R=Red, C=White
 Replace # in model number with letter indicating split color desired: D=Red/White, F=Amber/White, J=Red/Blue, K=Red/Amber, M=Blue/Amber



Option Model				Option Description
V23	M2	M4	M4V2	
-	M2FC	M4FC	M4FC	Flange, Chrome
-	M2FB	M4FB	M4FB	Flange, Black
-	-	M4BRUSH	-	Brush guard, Black
-	-	M4FC400	M4FC400	Flange, Chrome, adapts M Series to 400 Series style lightheds
V23PEDB	M2PEDB	-	-	Pedestal mount kit, Black
V23PEDC	M2PEDC	-	-	Pedestal mount kit, Chrome
-	M2GROM	-	-	Grommet mount kit
-	-	M4CT15B	M4CT15B	Fog light mount for 2015 Chevy Tahoe, pair, Black
V23P20B	-	-	-	Angled surface mount, Black
V23P20C	-	-	-	Angled surface mount, Chrome

Lightheads

SideKick™ Series

- Available with ION™ standard warning, ION wide-angle warning, or ION V-Series™ three-in-one combination warning, alley/flood, and puddle light
- Hard-coated lenses resist environmental damage from sand, sun, salt, and road chemicals
- Side fender mounted Black polycarbonate housing
- Easily installs without removing the fender
- **NEW** Go undercover with all new, SAE Class 1 Certified Smoked lenses. Consult price list for details
- Five year HDP® Heavy-Duty Professional warranty



SK01V3BB

Model	Optic	Technology	Color	Housing	VDC	Amps	Patterns	Cable	Certs	Size
SK01**	Directional	Super-LED®	A, R, B, W	Black	12	1.0/peak .40/avg	25	10" 4-Wire pigtail	C	Fits 2013-2015 Ford Police Interceptor Sedan
SK01JJ			R/B				69			
SK01W**	A, R, B, W		25							
SK01WJJ	R/B		69							
SK01V3**	V-Series		A, R, B, W			.765 warning .31 alley .12 puddle	25	10" 6-Wire pigtail	C, D	
SK02**	Directional		A, R, B, W			1.0/peak .40/avg	69	10" 4-Wire pigtail	C	
SK02JJ			R/B							
SK02W**	A, R, B, W		69							
SK02WJJ	R/B		25							
SK02V3**	V-Series		A, R, B, W			.765 warning .31 alley .12 puddle	25	10" 6-Wire pigtail	C, D	

Replace * symbol in model number with letter indicating color desired: A=Amber, B=Blue, R=Red, C=White



Lighthead

Mirror-Beam™ Series

- Custom textured Black vacuum formed ABS housings fit over existing mirror glamour caps
- **NEW** Now available with ION™ V-Series™ 3-in-1 combination warning, alley/flood, and puddle light
- Hard-coated lenses resist environmental damage from sand, sun, salt, and road chemicals
- Includes multiple Scan-Lock™ flash patterns (with Phase 1 and Phase 2 for alternating or simultaneously flashing lights) and steady-burn plus synchronize feature
- Available in split LED colors
- Optional color lenses are available for customer installation
- **NEW** Go undercover with all new, SAE Class 1 Certified Smoked lenses. Consult price list for details
- Five year HDP® Heavy-Duty Professional warranty



MBCC11JJ

Model	Series	Color	Amps	VDC	Patterns	Vehicle	Certs	Lighthead Size
MBCC11**	ION	A, R, B, W	1.0/peak 0.40/avg per lighthead	12	25 Scan-Lock	Chevy Caprice, 2011-2015	B R/A/B/W, C R/A/B/W, D R/A/B/W	1" (25mm) H x 4" (101mm) L
MBCC11JJ		R/B						
MBCT15**		A, R, B, W						
MBCT15JJ		R/B						
MBDC11**		A, R, B, W						
MBDC11JJ		R/B						
MBFT11**		A, R, B, W						
MBFT11JJ		R/B						
MBFX11**		A, R, B, W						
MBFX11JJ		R/B						
VMCC11**	ION V-Series	A, R, B, W	.765 warning .31 alley .12 puddle per lighthead	12	25 Scan-Lock	Chevy Caprice, 2011-2015	C	1" (25mm) H x 4" (101mm) L
VMCT15**						Chevy Tahoe, 2015		
VMDC11**						Dodge Charger, 2011-2015		
VMFT11**						Ford Taurus, 2011-2015 Police Interceptor, 2013-2015		
VMFX11**						Ford Explorer, 2011-2016 Police Interceptor Utility, 2013-2016		
MBPI06**	500 Series Linear Super-LED®		1.0/peak .40/avg			Chevy Impala, 2006-2015		1-5/8" (41mm) H x 5" (127mm) L

Replace * symbol in model number with letter indicating color desired: A=Amber, B=Blue, R=Red, C=White



Lightheads

OS™ Series

- Fully encapsulated for moisture, vibration, and corrosion resistance
- Hard-coated lenses resist environmental damage from sand, sun, salt, and road chemicals
- Includes Chrome flange
- Clear outer lens, color LEDs
- 24 Volt models available, contact factory
- Five year HDP® Heavy-Duty Professional warranty



OSR00FCR

Model	Technology	Mount	Color	VDC	Amps	Patterns	Flasher	Cable	Size
OS*00FCR	5mm LED	Surface, includes Chrome flange	A, R, B, W	12	60mA/peak 30mA/avg	Single flash	Built-in	6" Pigtail	1" (25mm) H x 1-1/2" (48mm) W x 1/2" (13mm) D
OS*00SCR					30mA	Steady	Requires flasher <small>(Purchased separately)</small>		

Replace * symbol in model number with letter indicating color desired: A=Amber, B=Blue, R=Red, C=White



3" Round & 4" Round Flat Lens

- Hard-coated lenses minimize environmental damage from sand, sun, salt, and road chemicals
- Fully encapsulated for moisture, vibration, and corrosion resistance
- Five year HDP Heavy-Duty Professional warranty

3" Round

- Ultra thin depth at only 7/16" (12mm)

Flat Lens

- TIR6™ Super-LED® with synchronize feature
- Supplied with adapter for PAR-36 (4-1/2") applications



3SB00FBR



2FR00ZRR

Model	Series	Technology	Mount	Color	VDC	Amps in mA	Patterns	Cable	Certs	Size
3S*00F*R	3" Round	LED warning	Surface	A,R,B	12	.50/peak .25/avg	1	6" Pigtail	C,D <small>(Class 1, 2 & 3)</small>	3"(76mm) Dia.
3SC0CDCR		LED compartment		W		.36	steady		-	
2F*00Z*R	4" Round	TIR6 Super-LED	Requires optional mounting	A, R, B, W		.8/peak .32/avg	25 Scan-Lock™		B, (A) C, D	4-1/4" (108mm) Dia. x 1-3/16" Depth

Replace * symbol in model number with letter indicating color desired: A=Amber, B=Blue, R=Red, C=White
 Replace # in model number with letter indicating split color desired: D=Red/White, E=Blue/White, J=Red/Blue, K=Red/Amber



Option Model		Option Description
3"	4"	
3FLANGEC	-	Chrome plated flange
3GROMMET	-	Rubber grommet kit

Lightheds

3-1/2" Round & 4" Round Extended Lens

- Hard-coated lenses minimize environmental damage from sand, sun, salt, and road chemicals
- Fully encapsulated for moisture, vibration, and corrosion resistance
- Integrate with other Whelen products through synchronize feature
- Five year HDP® Heavy-Duty Professional warranty

3-1/2" Round

- Solid or split color warning light
- Interleaved LEDs for combination warning and driving light

4" Round Extended Lens

- Linear6™ Super-LED® with synchronize feature
- Optional flasher simultaneously flashes or alternates multiple LED lightheds



PAR28DJ



FEDC06JR

Model	Type	Technology	Mount	Color	VDC	Amps	Patterns	Cable	Certs	Size	
PAR28*	3-1/2" Round	Linear6™ Super-LED	Fog light	A, R, B, W	12	2/peak .9/avg	25 Scan-Lock™	6" Pigtail	B, C, D	3-1/2" (89mm) Dia.	
PAR28#				R/B, R/W, B/W			69 Scan-Lock				
PAR28D*	3-1/2" Round White			W with B or R		1/peak .4/avg	50 Scan-Lock				C, D
PAR28DJ	Driving Light			W with B over R							
2E*00Z*R	4" Round Extended Lens		Requires optional mounting	A, R, B, W		25 Scan-Lock	B (B/R), C, D				
2E#00ZCR			R/B, R/W, B/W	69 Scan-Lock							
FEDC06*R	4" Round Extended Lens with Fog Light Mount, Includes Mounting		Dodge Durango, 2011-2015	A, R, B, W		25 Scan-Lock					
FEDC06#R				R/B, R/W, B/W		69 Scan-Lock					
FDFP11*R			Ford Expedition, 2011-2014	Driving with Interleaved R or B		25 Scan-Lock					
FDFP11JR				Driving with Interleaved B over R		69 Scan-Lock					
FEFP11*R				A, R, B, W		25 Scan-Lock					
FEFP11#R				R/B, R/W, B/W		69 Scan-Lock					

Replace * symbol in model number with letter indicating color desired: A=Amber, B=Blue, R=Red, C=White
 Replace # in model number with split color desired: D=Red/White, E=Blue/White, J=Red/Blue, K=Red/Amber



Option Model	Option Description
2GROMMET	Rubber grommet kit - for 2F and 2E Series only
2FLANGEC	Chrome flange kit - for 2F and 2E Series only
2FLANGEB	Black flange kit - for 2F and 2E Series only

Lightheds

PAR-46 Hand Held Spot/Floodlights

- 90# pull magnet mount with 8' coiled cord and cigar plug
- Built-in push-button On/Off switch
- Hard-coated lenses resist environmental damage from sand, sun, salt, and road chemicals
- Five year HDP® Heavy-Duty Professional warranty

Model	Lamp Type	Color	Diodes	VDC	Amps	Mount
P46HHS	2° Spotlight	W	18	12	2.3	Hand held, includes magnet



PAR-46 Rubber Housing Spot/Floodlights

- Rubber stud/swivel housing
- Available with or without lighthouse
- DUO™ 8° spotlight and warning light features independent control of each segment of the lighthouse with spotlight override
- Hard-coated lenses resist environmental damage from sand, sun, salt, and road chemicals
- Five year HDP Heavy-Duty Professional warranty

Model	Lamp Type	Color	Diodes	VDC	Amps	Mount
P46SLCHG	2° Spotlight	W	9	12	2.3	Stud/swivel
P46S3*H	DUO Color 8° Spotlight & Warning Light	W spotlight, R or B Warning	18 total, 12 White 6 color		Warning: 1/peak 0.40/avg, Spot: 1.4	



Replace * symbol in model number with letter indicating color desired: B=Blue, R=Red



PAR-46 Replacement Lamps

- Direct replacement for outdated halogen lamps
- DUO 8° spotlight and warning light features independent control of each segment of the lighthouse with spotlight override
- Hard-coated lenses resist environmental damage from sand, sun, salt, and road chemicals
- Five year HDP Heavy-Duty Professional warranty

Model	Lamp Type	Usage	Color	Diodes	VDC	Amps
P46SLC	2° Spotlight	Direct replacement	W	9	12	2.3
P46FL*	8° Spotlight		A, B, R, W	18		1.9
P46WL*	20° High x 60° Wide floodlight		W spotlight, R or B Warning	18 total, 12 White 6 color	12	Warning: 1/peak 0.40/avg, Spot: 1.4
P46S2*	DUO Color 8° Spotlight & Warning Light		W spotlight, California steady R			
P46S2*3						
P46S2X						

Replace * symbol in model number with letter indicating color desired: A=Amber, B=Blue, R=Red, C=White



Lightheads

Pioneer Nano™

- Die-cast aluminum powder coated housing in Black or White
- Long life LED operation with low current draw and low operating temperature
- Hard-coated lenses resist environmental damage from sand, sun, salt, and road chemicals
- 8° spotlight pattern comes standard. Includes an additional 40° x 20° floodlight lens
- Optic lens changes easily via four screws in picture frame fixture
- Powder coated stainless steel bail bracket with 3/8" stud carriage bolt mount
- 24 Volt models available, contact factory
- Five year HDP® Heavy-Duty Professional warranty



Model	Diodes	Mount	Housing	Volts	Amps	Watts	Lumens	Size
NP3BW	3	Bail/stud	White	12	1	12.8	1100	1-7/8" (48mm) H x 1-3/4" (44mm) D x 3-1/2" (89mm) L
NP3BB			Black					
NP6BW	6	Bail/stud	White	12	1.5	19.6	1800	2-5/8" (67mm) H x 1-3/4" (44mm) D x 3-1/2" (89mm) L
NP6BB			Black					

Pioneer Micro™

- Die-cast aluminum powder coated housing in Black or White
- Long life LED operation with low current draw and low operating temperature
- Hard-coated lenses resist environmental damage from sand, sun, salt, and road chemicals
- 8° spotlight pattern comes standard. Includes three additional optic lenses for a light pattern choice of:
 - 90° x 20° wide flood
 - 40° x 20° flood
 - 40° x 8° horizontal flood
- Optic lens changes easily via four screws in picture frame fixture
- Two mounts available:
 - Powder coated stainless steel bail bracket with 3/8" stud carriage bolt mount
 - Low profile pedestal/swivel available with Chrome or Black back cover and On/Off switch
- 24 Volt models available, contact factory
- Five year HDP Heavy-Duty Professional warranty



Model	Mount	Housing	Volts	Amps	Watts	Lumens	Size
MPBW	Bail/stud	White	12	3.5	44.8	4100	4-1/4" (108mm) H x 2-7/8" (73mm) D x 4-3/4" (121mm) W
MPBB		Black					
MPPW	Low profile pedestal/swivel	White	12	3.5	44.8	4100	8-11/16" (220mm) H x 3-1/4" (82mm) D x 5-1/16" (129mm) W
MPPWCS		White with Chrome cover & On/Off switch					
MPPB		Black					
MPPBBS		Black with Black cover & On/Off switch					
MPPBCS		Black with Chrome cover & On/Off switch					

Lightheads

Pioneer SlimLine™

- Die-cast aluminum powder coated housing in White or Black
- Long life LED operation with low current draw and low operating temperature
- Hard-coated lenses resist environmental damage from sand, sun, salt, and road chemicals
- Single lamp models include an 8° spotlight pattern. Includes and additional 40°x 20° floodlight lens
- Dual lamp models include an 8° spotlight pattern. Includes an additional 40°x 20° floodlight lens and combination 8° spotlight/40°x 20° floodlight lens
- Bail bracket works for horizontal and vertical mounting positions
- 24 Volt models available, contact factory
- Five year HDP® Heavy-Duty Professional warranty



PSL2BB



PSL1P

Model	Mount	Lamp	Housing	Volts	Amps	Watts	Lumens	Size	
PSL1B	Bail/stud	Single	White	12	3	39.2	3600	3-1/4" (82mm) H x 2-1/8" (55mm) D x 6-7/8" (175mm) W	
PSL1BB			Black						
PSL2B		Dual	White		6.1	78.3	7300		
PSL2BB			Black						
PSL1P	Low profile pedestal/swivel	Single	White		12	3	39.2	3600	5-5/8" (143mm) H x 2" (51mm) D x 6-7/8" (175mm) W
PSL1PB			Black						
PSL2P		Dual	White			6.1	78.3	7300	
PSL2PB			Black						

Traffic Advisors

LED Traffic Advisor™

- 15' cable standard, extra length cables available
- Black extruded aluminum housing
- Long life LED operation with low current draw and low operating temperature
- Hard-coated lenses resist environmental damage from sand, sun, salt, and road chemicals
- Fully encapsulated for moisture, vibration, and corrosion resistance
- Includes control head (not TAD models)
- Four operating modes: left, right, split, and flashing
- Rear dip switch provides 8 flash pattern choices
- Interior or exterior applications
- Models with end flashers available
- Five year HDP® Heavy-Duty Professional warranty



TADP8/ TAZ86



TAM65



TA4437M



TAD8

Model	Technology	Modules	End Flasher	Mount	Control Head	VDC	Housing	Size H x D	Length	
TADP6	LINZ6™ Dominator Plus™ Series	6	-	Surface / slide bolt	Requires optional TADCTL1 or customer supplied switches	12	Extreme low profile one piece	1-3/4" (44mm) H x 2-3/16" (55mm) D	23" (58cm)	
TADP8		8	Yes						30-7/8" (78cm)	
TADP8**									30-7/8" (78cm)	
TAZ66	LINZ6	6	-						23" (58cm)	
TAZ86		8	Yes						30-7/8" (78cm)	
TAZ86**									30-7/8" (78cm)	
TAM65	500 Series TIR6™	6	-		TACTLD1 included		12	Low profile flat style one piece	2-7/8" (73mm) H x 2-1/4" (57mm) D	36" (91cm)
TAM85			8							Yes
TAM85**		8			-			Rectangular split 2 piece	2-1/2" (64mm) H x 4-7/16" (113mm) D	22-3/4" (58cm) each piece
TA4437M			22-3/4" (58cm) each piece							
TAD6	TIR3 Dominator™ Series	6	-	Requires optional TADCTL1 or customer supplied switches	12	Extreme low profile one piece	1-3/4" (44mm) H x 2-3/16" (55mm) D	23" (58cm)		
TAD8								8	Yes	30-7/8" (78cm)
TAD8**		30-7/8" (78cm)								

Replace * symbol in model number with letter indicating end flashers color desired: A=Amber, B=Blue, R=Red



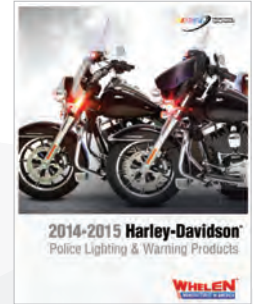
Option Model	Option Description
TACTLD1	Control head only for 6 & 8 lamp LED Traffic Advisor, includes remote flash control and end lamp enable/disable feature
DELTALD1	Delete TACTLD1 from 6-8 lamp LED Traffic Advisor
TAWPKT2	Waterproof butt splice upgrade kit for 8 lamp Traffic Advisor, factory installed

Option Model	Option Description
TADCTL1	Control head for TAD/TADP Dominator Traffic Advisor only
TADSW1	On/Off non-lighted SPDT 20 amp switch for TADCTL1 Dominator control head
TADSW2	On/Off/On non-lighted SPDT 20 amp switch for TADCTL1 Dominator control head
TANBKT1	Bracket for top of vehicle, horizontal mounting

Motorcycle

Harley-Davidson® Police Lighting and Warning Products

Whelen has engineered a wide variety of specialized Harley-Davidson Police products to fully customize your fleet. Super-LED® lights and model specific mounting brackets provide maximum protection to the front, rear, and sides of your bike, getting you noticed at every angle. Emergency response microphones and sirens alert and aid the public. All are designed specifically for the 2014-2015 Road King and Electra Glide, resulting in the perfect fit and insuring your safety and visibility.



For more information, request Whelen's Motorcycle catalog

Motorcycle Systems

- The Molded Touring Box features a terminal block with fuses, 12 VDC receptacles, and a Strip-Lite™ brake/tail with Amber turn lighthouse. Six M4 Series Linear Super-LED lighthoods mounted on the back and sides allow for the utmost visibility. Available with curb side, road side, or rear opening

M4B6R	Motorcycle box configured with six M4 series, right-hand (curb side) opening
M4B6L	Motorcycle box configured with six M4 series, left-hand (road side) opening
M4B6B	Motorcycle box configured with six M4 series, rear opening



M4B6R

Windshield Light Array

- The Road King® Super-LED internal Light-Array features a steel bracket and custom molded, high impact polycarbonate housing to fit snug on the base of the windshield and holds five LINZ6™ lighthoods
- The Electra-Glide® Super-LED external Light-Array features custom molded, high impact polycarbonate housing to fit snug on the base of the windshield without impeding the air duct and holds five Micron™ lighthoods

M05ZB	Windshield light array for 2007-2015 Harley-Davidson Road King. Five Blue LINZ6s
M05ZJ	Windshield light array for 2007-2015 Harley-Davidson Road King. Five LINZ6s, Blue outboard and center and two Red in the center sections
M06MJ	Windshield light array for 2014-2015 Harley-Davidson Electra-Glide. Five Microns, Blue outboard and center and two Red in the center sections



M06MJ

Siren Amplifiers and Control Head

WPA112	Waterproof 100 watt siren amplifier
WPA1	Full function control head only, weather resistant for WPA amp, includes a 7-1/2' cable, for handlebar and surface mounting (motorcycle)
WSMIC321	Microphone for WS321
WS321B14	WS321 siren amplifier mounting only, Black for 2014-2015 Harley-Davidson Road King and Electra-Glide



WPA1 with WSMIC321

Sirens and Speakers

CanTrol™ WC Light and Siren Integration System

- Program and control all the lighting, Traffic Advisors™ and siren functions in your vehicle
- WeCan® lightbar plugs directly into the amplifier/control module and is programmed by the CanTrol software
- Easy to configure using Windows application program via USB
- Eight inputs; four for use on positive or ground switching, and four for use on positive switching only
- Three analog inputs for temperature sensor, ambient light, etc.
- All outputs have diagnostic indicator
- Integrated Load Manager
- Integrated Shutdown Delay Timer allows system to operate for up to four hours after vehicle is turned off
- All outputs are fully configurable
- All outputs can be conditionally activated, maintaining user situational awareness
- Output patterns can be synced to lightbar
- Operates one or two 100 watt siren speakers
- All outputs have both short circuit/over-current protection
- **Meets or exceeds all applicable SAE, California Title XIII requirements with various Whelen speakers**
- Five year warranty on amplifier



Model	Control Head	Amplifier Control Module	Traffic Advisor	Inputs	Outputs	Amps per Output	VDC	Microphone	Size
CANWC1	Choice of 3 listed below	Full function	TA module for Traffic Advisors that utilize a 9C cable. No separate controller needed	4 positive or negative, 4 positive & 3 analog; 11 total	43	32 @ 2.5A 3 @ .25A 8 programmable @ 10A	12.5	Standard with 20' extension cable included	3-1/8" (79mm) H x 7-5/8" (194mm) D x 11-1/2" (289mm) W

Option Model	Control Head Options	Size
CANCTL1	Includes 3-position slide switch, 18 push-buttons, standard microphone with extension cable	3-1/2" (89mm) H x 1-5/16" (33mm) D x 6-7/8" (174mm) W
CANCTL5	Includes hand held microphone and controller with 3 progressive push-buttons for light and siren control, and nine push-buttons	5-5/16" (135mm) H x 1-1/8" (29mm) D x 2-3/16" (56mm) W
CANCTL6	Includes 13 push-buttons, a 7 position rotary knob, and 3-position slide switch	3-1/2" (89mm) H x 1-5/16" (33mm) D x 6-7/8" (174mm) W

Option Model	Option Description
CANEM16	16 Output expansion module
CANLITEB	Light sensor in Black housing
CANLITEC	Light sensor in Chrome housing
CANTEMPB	Temperature sensor in Black housing
CANTEMPC	Temperature sensor in Chrome housing

Sold through Authorized CanTrol distributors

Sirens and Speakers

CenCom® Sapphire™ Remote Light and Siren Control System

- Control warning lights, siren, and Traffic Advisor™ functions from a single keypad
- Integrated WeCan® serial port for use with WeCan lightbars and Inner Edge® lightbars
- Four positive or negative inputs, twelve outputs
- LED indicator lights for simple troubleshooting
- Easily accessible fuses and connections
- Heavy-duty power and output connectors
- Easy program configuration with CenCom Sapphire software, includes ability to configure lightbar via USB
- Each button is individually customizable
- Control head backlighting intensity can be adjusted
- Push-buttons include choice of function labels
- Available with or without integrated Traffic Advisor
- Optional 8 positive or negative input expansion module available
- Features integrated load management and shutdown delay timer
- Operates one or two 100 watt siren speakers
- Meets or exceeds all applicable SAE, California Title XIII requirements with various Whelen speakers
- Five year warranty on amplifier



CenCom Amplifier



CCSRN3
CCSRN3A
CCSRNTA3
CCSRNT3A



CCSRN36
CCSRN3F
CCSRNT36
CCSRNT3F



Standard Microphone

CCSRN35
CCSRNT35

Model	Control Head	Traffic Advisor	Amps per Output	VDC	Microphone	Microphone Extension	Size		
CCSRN3	3 Position slide switch and 18 push-buttons	-	1 @ 40A	12.5	Standard	20' Cable included	Siren Amplifier: 3-1/8" (79mm) H x 6-3/4" (171mm) D x 8-1/4" (210mm) W		
CCSRN3A		Includes Traffic Advisor module							
CCSRNTA3									
CCSRNT3A									
CCSRN35	Hand held with 3 position progressive push-button switches and 9 push-buttons	-	2 @ 20A		Built into control head		Hand Held Control Head: 5-5/16" (135mm) H x 1-1/8" (29mm) D x 2-3/16" (56mm) W		
CCSRNT35		Includes Traffic Advisor module	4 @ 10 A 4 @ .25 A						
CCSRN36	3 sections with 8 push-buttons, 3 position slide switch with a 7 position rotary knob, manual airhorn, plus 3 Traffic Advisor switches	-	1 @ 10 A Dry contact relay		12.5		Standard	20' Cable included	Rectangular Control Heads: 3-1/2" (89mm) H x 1-5/16" (33mm) D x 6-7/8" (174mm) W
CCSRN3F		Includes Traffic Advisor module							
CCSRNT36									
CCSRNT3F									

Option Model	Option Description
CCTRIM	Trim Ring for semi-flush mounting of control head for CCSRN3,CCSRNTA3, CCSRN3A, CCSRNT3A, CCSRN36, CCSRNT36, CCSRN3F, CCSRNT3F

Sirens and Speakers

Siren Amplifiers

HHS2200

- The HHS220 is a programmable remote 200W siren/power control center with 8 high current outputs
- Programming is done on a PC or laptop and transferred via USB cable
- Hand held siren/light control with built-in microphone
- 12 illuminated push-buttons are programmable to selected outputs
- Progressive three position push buttons replace slide switch for lighting control
- Meets Class A requirements of SAE, AMECA, and California Title XIII specifications



WSSC

- Combination siren and speaker in a single compact unit
- Heavy-duty 30-watt amplified siren ideal for use on motorcycles, ATVs, snowmobiles, etc.
- Hands-free operation for Wail and Yelp tones lets you keep both hands steering while accessing warning tones
- Aluminum housing plus water-resistant connectors for vibration and moisture resistance
- Model WSSPA30 with Public Address and includes plug-in microphone



Model	Series	Siren Type	Total Current Draw (Amps)	Output Power (Watts)	VDC	Switches	Hands Free	Siren Tones	Microphone	Mount	Size
WSSC30	WSS Series	Combination remote siren/speaker	2	30	12	Requires customer supplied switches	Yes, for Wail and Yelp tones	10 Plus Airhorn with override	-	Two way "L" bracket	4-5/16" (110mm) H x 4-5/8" (118mm) D x 5-1/2" (138mm) W
WSSPA30		Combination remote siren/speaker with hand held microphone						10 Plus Airhorn with override and Public Address			
HHS2200	HHS Series	Hand held controller with programmable siren/light control	8 @ 100w 16 @ 200w	1 or 2 100 Watt speakers		12 Programmable push-buttons, hand held with 3 position progressive push-button switches and 9 push-buttons	Yes, via horn ring or foot switches	4 Standard preset, including Airhorn, 37 total	Yes	Flange mount	Amp/Relay module: 2-1/2" (65mm) H x 7" (184mm) D x 8" (203mm) W Control head: 5-5/16" (135mm) H x 1-1/8" (28mm) D x 2-1/4" (57mm) W

Option Model	Option Description
WSSC30HK	Harness kit for synchronization of two WSSC30s
WSSMSW3	Motorcycle switch, 3-functions for siren, airhorn and lighting (5 amp max) for WSSC30 and WSSPA30

Sirens and Speakers

295 Series Electronic Sirens

- Meets California Title XIII and SAE J1849
- 295SSA1 can drive one 100 watt speaker. All other models can drive one or two 100 watt speakers
- Combination On/Off and horn ring transfer switch
- Solid-state over/under voltage shutdown and output short circuit protection
- Input polarity protection
- Models available with SI-TEST® a silent, self-diagnostic indicator of siren or speaker failure
- Recess or bail bracket for under dash mounting. Adjustable bail bracket allows mounting in a variety of positions
- Locking quick disconnect plug
- Siren functions are backlit for ease of visibility
- 295SL models available in 24 Volt, contact factory



Model	Siren	Control	Switches	Current output	SI TEST	Siren Tones	Warranty	Size
295SDA1	Dual toned programmable remote amplifier and control head with lights and siren control	2 Separate siren amplifiers in one housing, supports 100 or 200 watt speakers	3 Position slide switch, 8 programmable push-buttons, radio repeat button, and 6 siren control push-buttons	3-20 Amp 8-10 Amp	-	20 Scan-Lock™ Includes radio repeat and PA	2 Year	Control Head: 3-1/2" (89mm) H x 1-1/4" (32mm) D x 6-7/8" (219mm) W Amplifier: 2-1/4" (57mm) H x 7-1/8" (189mm) D x 8-5/8" (219mm) W
295SSA1	Single tone programmable remote amplifier and control head with lights and siren control	1 Siren amplifier, supports 100 watt speakers						
295SLSA1	Self-contained	Selectable 100 or 200 watt speakers	7 Position tone rotary knob with volume control knob	-	-	17 Scan-Lock	5 year HDP® Heavy-Duty Professional	2-1/2" (64mm) H x 6" (152mm) D x 5-1/2" (140mm) W
295SLSA6	Single self-contained unit with lights and siren control	9 Individually programmable switches, supports 100 or 200 watt speakers	7 Position tone rotary knob with volume control knob, 4 position slide switch for 3 primary warning and 5 push-button switches for secondary warning plus 1 momentary switch, manual tone and horn buttons	High current	Yes	17 Scan-Lock Includes radio repeat and PA		3-5/16" (84mm) H x 7" (178mm) D x 6" (152mm) W
295SL100	Economical self-contained unit	Supports 100 or 200 watt speakers	7 Position tone rotary knob with manual tone button	Low current	-	19 Scan-Lock	2 Year	2-1/2" (64mm) H x 5-1/2" (140mm) D x 6" (152mm) W
295SL101			7 Position tone rotary knob with manual tone button and volume control knob			Includes radio repeat and PA		

Option Model	Option Description
WPKM1	Park kill connection modules, 30 amp for 295SL100 and 295SL101

Sirens and Speakers

Alpha™ and Beta™ Siren Amplifiers

- Alpha Series sirens let you cycle through two or three siren tones using horn or auxiliary control. For use in applications not requiring radio repeat or PA
- Beta Series 100 watt siren with public address features radio repeat and Hands-Free operation
- 24 Volt models available, contact factory



Model	Series	Siren Type	Output Power	VDC	Switches	Hands Free	Siren Tones	Microphone	Mount	Size		
ALPHA12S	Alpha Series	Self-contained	100 watts	12	Power On/Off, 3 Position rocker switch and airhorn button	Yes	5 Scan-Lock™	-	Bail bracket	2-1/2" (64mm) H x 4-5/8" (117mm) D x 6" (152mm) W		
ALPHASL		Remote	100 or 200 watts		Requires separate switches		15 Scan-Lock		Base mount flange	2-1/4" (54mm) H x 4-3/4" (120mm) D x 5" (127mm) W		
BETA112R	Beta Series	Remote amplifier only	100 watts		7 Position tone rotary knob, volume control knob, lights/siren toggle switch and manual/airhorn toggle switch		5		Includes radio repeat and PA	Yes	Surface or recess	2-3/8" (60mm) H x 5-1/2" (140mm) D x 7-1/8" (181mm) W
BETA2		Control head only Requires BETA112R remote amplifier (purchased separately)										1-3/4" (44mm) H x 2" (64mm) D x 4-1/4" (108mm) W

Option Model	Series	Option Description
ALPHA1	Alpha Series Switches	Single rocker On/Off switch for use with Hands-Free operation
ALPHA2		Single On/Off Hands-Free activation plus momentary for airhorn
ALPHA3		Tone 1/Off/Tone 2 switch operation plus momentary switch for airhorn
ALPHA4		Three switch operation, one On/Off, one Tone 1/Hands-Free/Tone 2 plus momentary for airhorn
ALPHA5		Three position toggle switch, controls 3 siren tones and other warning lights or device
BETA2BKT	Beta Series	Flange mounting bracket for BETA2
BETAMIC		Remote microphone for BETA112R (requires customer supplied switches)

Sirens and Speakers

Siren System and Speakers

Howler™ Series

- Howler system is an add-on to any 100/200 watt existing warning system
- Low frequency reverberating tones are able to penetrate high noise, traffic situations, and vehicles
- Includes siren amplifier and one or two speakers
- Works with most siren amplifiers
- Eight selectable tone durations

SA315 Speaker

- SA315P Series high performance multi-port speaker
- For bumper, concealed, or flange mount
- Installs to vehicle's cross member in minutes



Model	Series	Speaker Type	No. of Speakers	Output Power	VDC	Housing	Mount	Size
HOWLER	Howler	Low frequency reverberating add-on to existing warning system with 8 selectable tone durations	2	200 Watts	12	Speaker: Black nylon composite Amplifier: Aluminum	See below	Speaker: 7-1/4" (184mm) Dia. x 8-3/8" (213mm) D Amplifier: 2-1/4" (57mm) H x 4-3/4" (121mm) D x 5" (127mm) W
HWLUNI							Includes universal mounting bracket	
HWLCC11							Includes bracket for Chevy Caprice, 2012-2015	
HWLFT11							Includes bracket for Ford Taurus, 2010-2015, Police Interceptor, 2013-2015	
HWLFE13							Includes bracket for Ford Explorer & Utility 2013-2016 (with Fog Lights)	
HWLDC15							Includes bracket for Dodge Charger, 2015	
SA315P	Projector™ Series	High performance multi-port				Black nylon composite	See below	6-1/2" (165mm) H x 2-7/8" (74mm) D x 6-7/16" (164mm) W

Option Model	Series	Option Description
HWLRB2	Howler	Bracket for Ford Expedition, 2008-2014
HWLRB4		Bracket for Ford E-Series, 2008-2015
HWLRB7		Bracket for Chevy Impala, 2008-2015
HWLRB11		Bracket for Chevy Express G-Series, 2011-2015
HWLRB13		Bracket for Ford Explorer, 2011-2016, Utility Police Interceptor, 2013-2016*
HWLRB14		Bracket for Dodge 4500, 2011-2015
HWLRB19		Bracket for Chevy Silverado 1500, 2014-2015
HWLRB20		Bracket for Chevy Tahoe, 2015
HWLRB21		Bracket for Ford Taurus, 2010-2015, Police Interceptor, 2013-2015
HWLRB22		Bracket for Ford F-250/F-350, 2011-2015
HWLRB23		Universal mounting brackets, pair

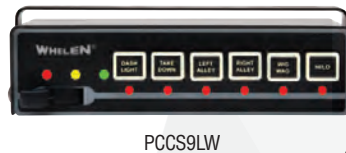
Option Model	Series	Option Description
SAK1	SA315P Projector	Universal "L" bracket
SAK23		Ford Expedition, 2007-2015
SAK37		Dodge Charger, 2011-2015
SAK39		Ford Taurus, 2010-2015, Police Interceptor, 2013-2015
SAK44		Ford Explorer, 2014-2016, Police Interceptor Utility, 2012-2016
SAK45		Chevy Caprice, 2011-2015
SAK46		Chevy Impala, 2012-2015
SAK51		Ford Explorer, 2014-2016, Police Interceptor Utility, 2012-2016, passenger side, lower grille
SAK52		Ford Explorer, 2014-2016, Police Interceptor Utility, 2012-2016, driver side, lower grille
SAK55		Chevy Suburban/Tahoe, 2015, passenger side
SAK56		Chevy Suburban/Tahoe, 2015, driver side

Consult price list for a complete list of brackets
 * 2016 without Fog Lights only

Switches

Power Control Centers and Switches

- Adjustable bail bracket mounting
- Backlit function windows for choice of 72 standard press-on legend tabs
- Hand held or mounted to the dash or console, the WCC9 replaces the standard ECM (Electronic Control Module) on WeCan® lightbars
- Two year warranty



Model	Type and Usage	Switches	Output	LED "On" Indicator	VDC	Size
PCCS9RW	High current 9 position programmable switch box	One 3 position slide switch, 6 push-buttons, all individually programmable	Nine 20 amp outputs 80 amp total max	Yes	12	1-5/8" (40mm) H x 6-1/4" (159mm) D x 6" (152mm) L
PCCS9LW	Economical control center for use with Freedom®, & Liberty II™ lightbars		Nine 250mA max per output			1-5/8" (40mm) H x 4" (102mm) D x 6" (152mm) L
WCC9	Electronic control for Freedom and Justice® WeCan Lightbars	6 Push-buttons and 1 configurable 3 position slide switch (11 configurations)	Serial control to lightbar			2-1/2" (64mm) H x 7/8" (22mm) D x 4-3/16" (106mm)L
WCC92	Electronic control for Liberty II, Legacy®, and Freedom IV WeCan Lightbars					

Model	Type	Usage	Switches	Switch Type	Illuminated
1SWITCH	"L" shaped aluminum switch bracket only, choose switches from choices below	For 1 switch	Optional	-	-
2SWITCH		For 2 switches			
3SWITCH		For 3 switches			
4SWITCH		For 4 switches			
PC1	Switch only with 15 amp contact	On/Off	1 each	SPST	Yes
PC2		Momentary On			-
PC3		On/Off/On		SPDT	Yes
PC4		On/On			-
PC5		On/Off/On			DPDT

Flashers

Headlight/Grille, Taillight Flashers

- Solid-state controlled relay output
- Molded polycarbonate housing
- Fully encapsulated for moisture, vibration, and corrosion resistance
- SSFPOS16 is for the 2006-2015 Chevy Impala, 2011-2015 Chevy Caprice, and 2007-2015 Chevy Tahoe Police Package vehicles
- Two year warranty



Model	Usage	Lamp Load Type	Headlight Switching	Output Driver	Outlets	Outlet Switching	Watts per Outlet	VDC	Flash Patterns	Size
SSFPOS	Headlight/ grille light	Halogen, LED, or Super-LED®	Positive	100% solid-state	2 Outlets	1x1	160	12	7	7/8" (22mm) H x 2" (50mm) W x 2-3/4" (70mm) D
UHF2150A			Positive or negative	Relay			162		4	1-1/2" (38mm) H x 4-1/4" (108mm) W x 3" (76mm) D
SSFPOS16	Headlight/ taillight	Positive	100% solid-state	160			7		7/8" (22mm) H x 2" (50mm) W x 2-3/4" (70mm) D	

Police Equipment Interface Modules

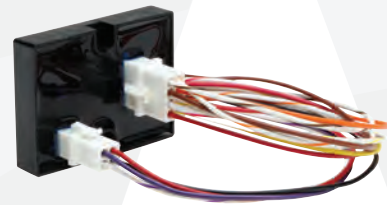
- Modules provide conditioned signals to and from the Police Equipment Interface Module and the specified vehicle, facilitating the installation of Whelen Hands-Free products

PEIMCT13

- For the 2013 Chevy Tahoe and 2013-2015 Caprice
- Switches four negative inputs to positive inputs
- Vehicle Speed Sense feature

PEIMFI13

- For the 2013-2015 Ford Police Interceptor Sedan or Utility
- Steering Wheel Auxiliary Switch Interfacing will convert the Ford auxiliary switch signals from ground to positive 12 volt, simplifying installation with Whelen CenCom Sapphire™ or CanTrol® WC. Changing these signals allows the end user or installer to forego using external relays when integrating CenCom™ and CanTrol
- Vehicle Speed Sense feature



Lighting Certifications

B CAC, Title 13, Article 22
(Red, Blue and Amber lightheads)

Warning Lamps and Devices

C SAE J595 - Flashing Warning Lamps for Authorized Emergency, Maintenance, and Service Vehicles (Jan 90)

D SAE J845 - 360° Warning Devices for Authorized Emergency, Maintenance, and Service Vehicles (May 97)
Class 1, Class 2, Class 3
(Includes selective coverage)

E..... SAE J1318 - Gaseous Discharge Warning Lamp for Authorized Emergency, Maintenance, and Service Vehicles (May 98) Class 1, Class 2, Class 3

Test Procedures and Materials

F..... SAE J575 - Test Methods and Equipment for Lighting Devices & Components for use on Vehicles less than 80" (2032mm) in Overall width (Jun 92)

G SAE J2139 - Test Methods and Equipment for Lighting Devices & Components for use on Vehicles greater than 80" (2032mm) in Overall width (Jan 96)

H SAE J578 - Color Specifications (Jun 95)

Signalling and Marking Lighting Devices and Systems

I FMVSS108 - Federal Motor Vehicle Safety Standards

J..... SAE J586 - Stop Lamps for use on Motor Vehicles Less than 80" (2032mm) in Overall width (Sep 95)

K SAE J585 - Tail Lamps (Rear position Lamps) for Use on Motor Vehicles Less than 80" (2032mm) in Overall width (Dec 94)

L..... SAE J588 - Turn Signal Lamps for Use on Motor Vehicles Less than 80" (2032mm) in Overall width (Dec 94)

M ... SAE J592 - Clearance, Side Marker, Identification Lamps (Dec 94)

N SAE J593 - Back-up Lamps (Reversing Lamps) (Oct 95)

N(A) SAE J593C - Back-up Lamps (Reversing Lamps) (Feb 68)

O SAE J914 - Side Turn Signal Lamps for Vehicles less than 36' (12m) in Length (Jan 95)

P SAE J1432 - High Mounted Stop lamps for Use on Vehicles 80" (2032mm) or More in Overall Width (Sept 97)

Q SAE J1889 - LED Lighting Devices (Jun 99)

R SAE J1957 - Center High Mounted Stop Lamp Standard for Vehicles Less than 80" (2032mm) in Overall Width (Jun 93)

S SAE J2039 - Side Turn Signals Lamps for Large Vehicles (Jun 94)

T..... SAE J2040 - Tail Lamps (Rear Position Lamps) for Use on Vehicles 80" (2032mm) or More in Overall Width (Apr 99)

U SAE J2042 - Clearance, Side marker, and Identification Lamps for Use on Motor Vehicles 80" (2032mm) or More in Overall Width (Jun 96)

V SAE J2261 - Stop Lamps and Front and Rear-Turn Signal Lamps for Use on Motor Vehicles 80" (2032mm) or More in Overall Width (Mar 96)

X SAE J1398 - Stop Lamps for Use on Motor Vehicles 80" (2032mm) or More in Overall Width

Y SAE J1395 - Turn Lamps for Use on Motor Vehicles 80" (2032mm) or More in Overall Width

Product Index

O	OS™ Series Lighthead	23	M	M Series Lighthead	20
2	295 Series Siren	33		Micron™ Series Lighthead	16
3	3" Round Lighthead	23		Mirror-Beam™ Series	22
	3-1/2" Round Lighthead	23		Motorcycle Lighting and Warning	29
4	4" Round Lighthead	23-24	O	Outer Edge® Lightbars	12
A	Alpha™ Siren Amplifiers	34	P	PAR-46 Hand Held Spot/Floodlights	25
	Avenger™ Series Lights	13		PAR-46 Rubber Housing Spot/Floodlights	25
B	Beta™ Siren Amplifiers	34		PAR Replacement Lamps	25
C	CanTrol® WC Integration System	30		Pioneer Micro™	26
	CenCom Sapphire™ Control System	31		Pioneer Nano™	26
	Combination Hand Held/Self-Contained Sirens	32		Pioneer SlimLine™	27
D	Dominator™ & Dominator Plus™ Series	15,26		Police Interface Modules	37
E	Economical Sirens	65		Power Control Centers	36
F	Flashers	37	S	SA315 Siren Speaker	35
	FlatLighter™ Series Lights	14		SideKick™ Series	21
	Freedom® IV DYAD™ Series Lightbars	7		Siren Systems and Speakers	66
H	Howler™ Siren System	35		SlimLighter™ Series Lights	19
I	Inner Edge® RTX Lightbars	9		SpitFire™ Series	14
	Inner Edge XLP Lightbars	10-11		Strip-Lite™ Series Lighthead	47
	Interior Lighting	54-55	T	Traffic Advisors™	28
	ION™ Series Lighthead	17	V	Vertex™ Series Lighthead	16
	ION V-Series™ Lighthead	18		V23 Series Lighthead	20
J	Justice® Series Lightbars	8	W	WSSC Siren/Speaker Combination	32
L	Legacy™ Series Lightbars	4			
	Liberty™ II Series Lightbars	5			
	Liberty II Trio Series Lightbars	6			
	LINV2™ V-Series™ Lighthead	19			

Tune in to
WeVision™
<http://www.whelen.com/auto/media.php>

The banner features a large red 'W' logo on the left, a filmstrip at the bottom with four frames showing people in uniform, and a large blue play button icon on the right.

WHELEN[®]

ENGINEERING COMPANY, INC.

51 Winthrop Road
Chester, Connecticut 06412-0684
(860) 526-9504
www.whelen.com

ISO 9001 Registered QMS

Distributed by:

WhelenENG



OFFICIAL WARNING LIGHTS OF



Whelen Engineering reserves the right to upgrade and improve products without notice.
© 2015 Whelen Engineering Company, Inc. Printed in U.S.A.
NASCAR[®] is a registered trademark of the National Association for Stock Car Auto Racing, Inc.
Code No. 12836A - 8/13/15