

NOTES:

USE PARKER O-LUBE ON ALL O-RINGS AND MATING SURFACES
 UNLESS OTHERWISE NOTED

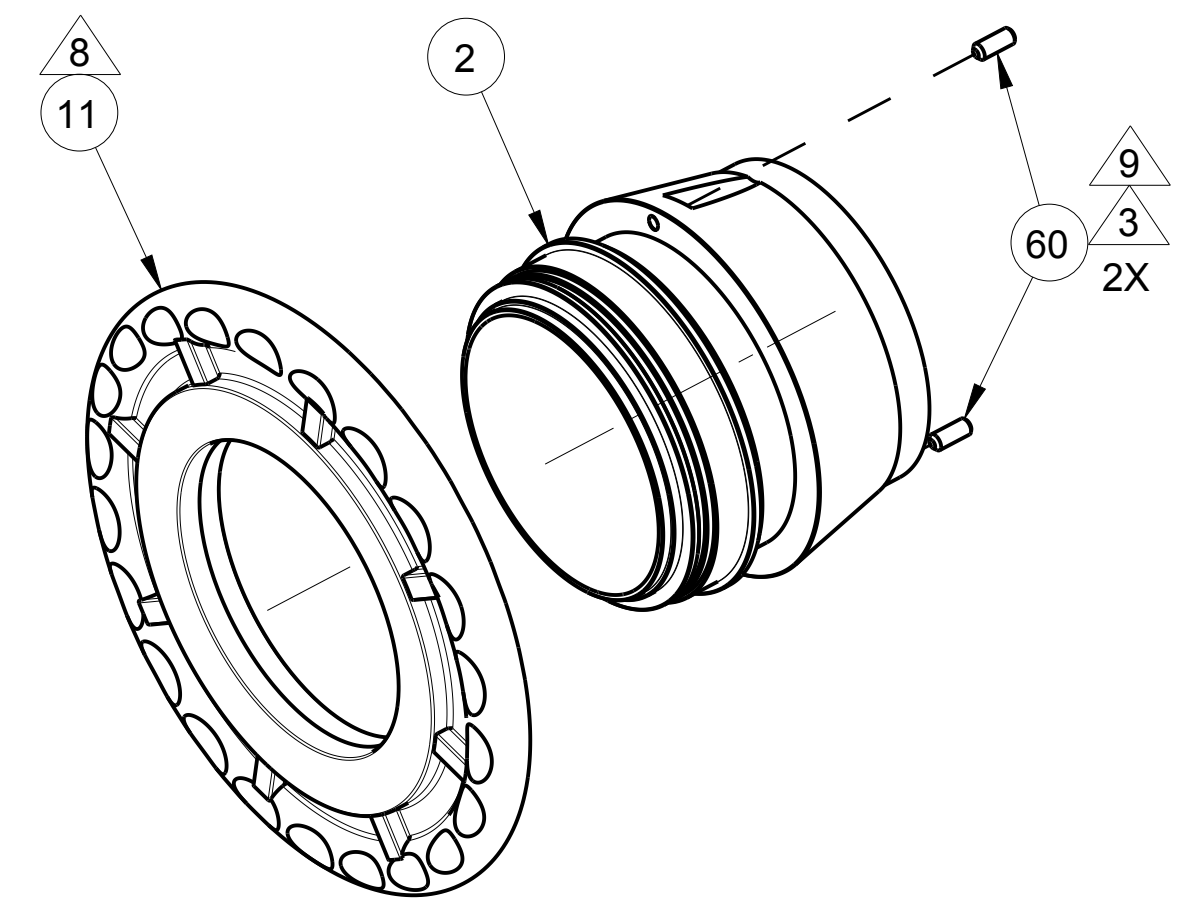
- △ 1 CUT O-RING AT ASSEMBLY
- △ 2 USE PRIMER T AND PERMABOND HH120 OR LOCTITE 277
- △ 3 USE PERMABOND LM113 OR LOCTITE 222
- △ 4 TURBINE TEETH TO BE CUT AT ASSEMBLY WITH 1/16" SAW BLADE
- △ 5 DOG POINT OF SET SCREW TO BE POSITIONED INTO GROOVE OF PATTERN SLEEVE WHEN INSTALLED.
- △ 6 DIMPLE AT ASSEMBLY.
- △ 7 APPLY PERMABOND LM113 OR LOCTITE 222 AFTER CALIBRATION.

PHONE: 330.264.5678 or 800.228.1161 | FAX: 330.264.2944 or 800.531.7335 | www.akronbrass.com

Parts List Sheet:

115500

WARRANTY AND DISCLAIMER*: We warrant Akron Brass products for a period of five (5) years* after purchase against defects in materials or workmanship. Akron Brass will repair or replace product which fails to satisfy this warranty. Repair or replacement shall be at the discretion of Akron Brass. Products must be promptly returned to Akron Brass for warranty service. We will not be responsible for: wear and tear; any improper installation, use, maintenance or storage; negligence of the owner or user; repair or modification after delivery; failure to follow our instructions or recommendations; or anything else beyond our control. WE MAKE NO WARRANTIES, EXPRESS OR IMPLIED, OTHER THAN THOSE INCLUDED IN THIS WARRANTY STATEMENT, AND WE DISCLAIM ANY IMPLIED WARRANTY OF MERCHANTABILITY OR FITNESS FOR ANY PARTICULAR PURPOSE. Further, we will not be responsible for any consequential, incidental or indirect damages (including, but not limited to, any loss of profits) from any cause whatsoever. No person has authority to change this warranty. *Unless otherwise provided herein. Akron Brass industrial electronic components & the Severe-Duty Monitor have a one (1) year warranty. Select Akron Brass handline nozzles and valves carry a ten (10) year warranty. Scene Star Lights carry a (6) year warranty. Weldon products have a two (2) year warranty from date of manufacture (excluding consumable components). Select Weldon LED products carry a five (5) year warranty. Honda products have the manufacturers' warranty and Akron Brass disclaims any warranty in respect of those products.



DISCONTINUED PATTERN SLEEVE WITH CONTROL RING
(FOR REPAIR ONLY)

 USE PERMABOND LM 113 OR LOCTITE 222

 DO NOT SHAVE OR CUT BUMPER ID EDGE

 ADVANCE SET SCREW IN THREADED HOLE UNTIL IT IS FLUSH WITH SURFACE

ITEM NO.	DESCRIPTION	PART NO.	QUANTITY	
			1755	1757
1	TURBINE RETAINING RING	102331	1	1
2	PATTERN SLEEVE (FOR CONTROL RING)	***	1	1
2	PATTERN SLEEVE (FOR HANDLES)	124393	1	1
3	DISCHARGE TUBE	102335	1	-
3	DISCHARGE TUBE	102337	-	1
4	SCREW 3/8-16 X 1	767139	1	1
5	BAFFLE HEAD	102326	1	1
6	BAFFLE STEM	117463	1	1
8	TURBINE TEETH	773062	1	1
9	SCREW FULL DOG 10-24 X 5/16	767088	3	3
10	O-RING 2-242	757251	2	2
11	PATTERN CONTROL RING	***	1	1
13	CAM NUT	735045	1	1
14	O-RING 2-233	757249	2	2
15	O-RING 2-244	757252	1	1
16	NOZZLE BODY	117464	1	1
17	DETENT HANDLE	102328	1	1
18	SPRING	768026	1	1
19	BALL BEARINGS	703017**	39	39
20	SET SCREW 1/4-20 X 1/4	765002	1	1
21	SWIVEL ADAPTER	102324	1	1
22	GASKET	717043	1	1
23	SWIVEL 2-1/2 NH	101420*	1	1
24	SWIVEL PLUG	742023	1	1
25	O-RING 2-235	757046	1	1
26	ID BAND 1755	703352	1	-
26	ID BAND 1757	704379	-	1
28	GALLONAGE BAND GPM	703353	1	-
28	GALLONAGE BAND LPM	703354	1	-
28	GALLONAGE BAND GPM	704378	-	1
28	GALLONAGE BAND LPM	704380	-	1
29	CAM HANDLE	102329	1	1
30	GALLONAGE CONTROL RING	102330	1	1
31	CAM ROLLER	758160	1	1
32	INDICATOR PATTERN BAND GPM	703469	1	-
32	INDICATOR PATTERN BAND LPM	703470	1	-
32	INDICATOR PATTERN BAND GPM	704464	-	1
32	INDICATOR PATTERN BAND LPM	704463	-	1
33	KEY	727027	1	1
34	SHIM BLUE	768218	1	1
34	SHIM BROWN	768219	1	1
34	SHIM PINK	768220	1	1
38	DETENT SPRING	769111	1	1
39	BALL ST STL 3/16	704018	1	1
41	O-RING 2-250	757102	1	1
60	SCREW 1/4-20 X 5/8	765317	2	2
61	HANDLE- PATTERN	124394	2	2

OPERATING & MAINTENANCE INSTRUCTIONS

THE FOUR FLOW SETTINGS ARE BASED ON 100 PSI INLET PRESSURE. MAXIMUM OPERATING PRESSURE OF 150 PSI. CHECK THE TURBINE TEETH TO BE SURE THEY TURN FREELY BEFORE OPERATING.

THE TURBINE TEETH ARE SPLIT TO ALLOW FOR EXPANSION AND CONTRACTION.

THE TURBINE TEETH ARE EASILY REMOVED FOR CLEANING OR REPLACEMENT. SIMPLY REMOVE THE THREE SET SCREWS (9), REMOVE THE TURBINE RETAINING RING (1), AND REMOVE THE TURBINE TEETH (8). TO CLEAN, SIMPLY WIPE OFF ANY DIRT AND GREASE FROM THE TURBINE TEETH AND CONTACT SURFACES ON THE TURBINE RETAINING RING AND PATTERN SLEEVE (2). IF OTHER PARTS ON THE NOZZLE ARE DISASSEMBLED, BE SURE TO THAT ANY O-RINGS ARE LUBRICATED WITH LOW-TEMP LUBRIPLATE OR EQUIVALENT BEFORE REASSEMBLY.

* FOR OTHER THREADS ORDER BY DESCRIPTION AND THREAD SIZE (ODM AND TPI) OR BY AKRON THREAD CODE

** PACKET OF 50 BALL BEARINGS P/N: 109041

*** THE PATTERN CONTROL RING (ITEM 11). MUST BE PRESSED ON AT FACTORY WITH (ITEM 2) PATTERN SLEEVE. ORDER ASSEMBLY 17550039

PHONE: 330.264.5678 or 800.228.1161 | FAX: 330.264.2944 or 800.531.7335 | www.akronbrass.com

Parts List Sheet:

115500

WARRANTY AND DISCLAIMER*: We warrant Akron Brass products for a period of five (5) years* after purchase against defects in materials or workmanship. Akron Brass will repair or replace product which fails to satisfy this warranty. Repair or replacement shall be at the discretion of Akron Brass. Products must be promptly returned to Akron Brass for warranty service. We will not be responsible for: wear and tear; any improper installation, use, maintenance or storage; negligence of the owner or user; repair or modification after delivery; failure to follow our instructions or recommendations; or anything else beyond our control. **WE MAKE NO WARRANTIES, EXPRESS OR IMPLIED, OTHER THAN THOSE INCLUDED IN THIS WARRANTY STATEMENT, AND WE DISCLAIM ANY IMPLIED WARRANTY OF MERCHANTABILITY OR FITNESS FOR ANY PARTICULAR PURPOSE.** Further, we will not be responsible for any consequential, incidental or indirect damages (including, but not limited to, any loss of profits) from any cause whatsoever. No person has authority to change this warranty. *Unless otherwise provided herein. Akron Brass industrial electronic components & the Severe-Duty Monitor have a one (1) year warranty. Select Akron Brass headline nozzles and valves carry a ten (10) year warranty. Scene Star Lights carry a (6) year warranty. Weldon products have a two (2) year warranty from date of manufacture (excluding consumable components). Select Weldon LED products carry a five (5) year warranty. Honda products have the manufacturers' warranty and Akron Brass disclaims any warranty in respect of those products.