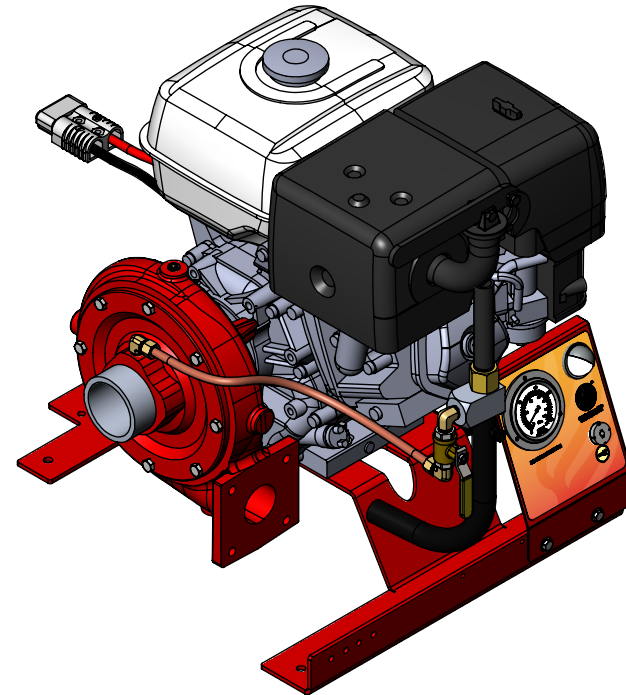
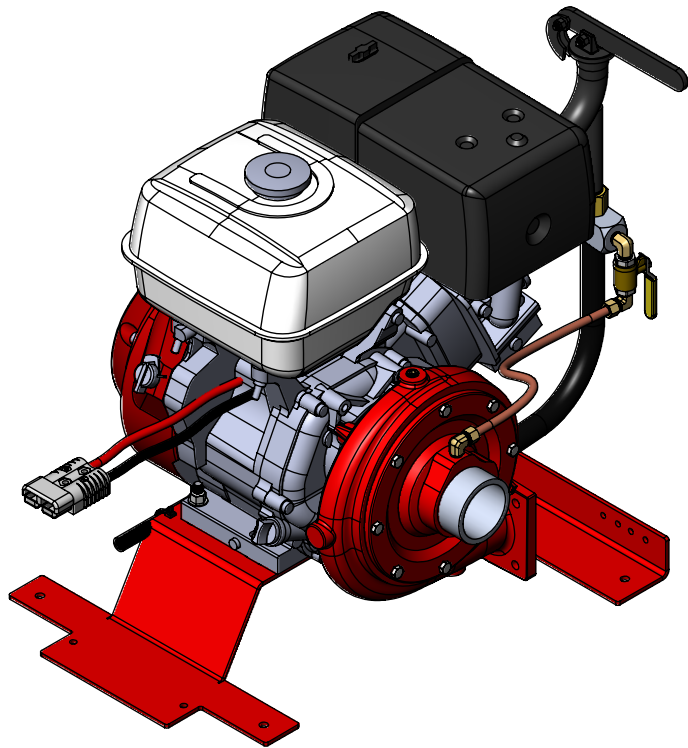
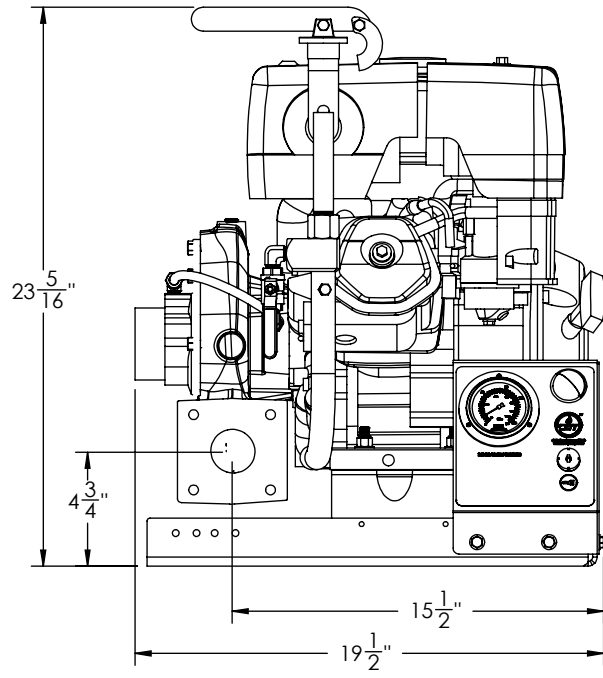
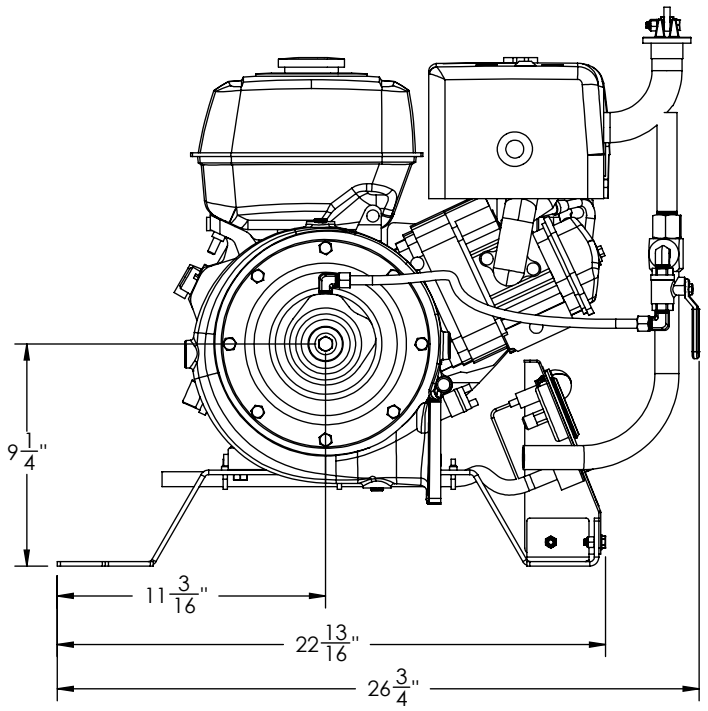


SKID MOUNTED FIRE PUMP
SM-PFP-11hpHND-EM
GX340 HONDA WITH HIGH-VOLUME PUMP



WE CAN CUSTOMIZE AS YOU WANT



WET WEIGHT: 132 lbs



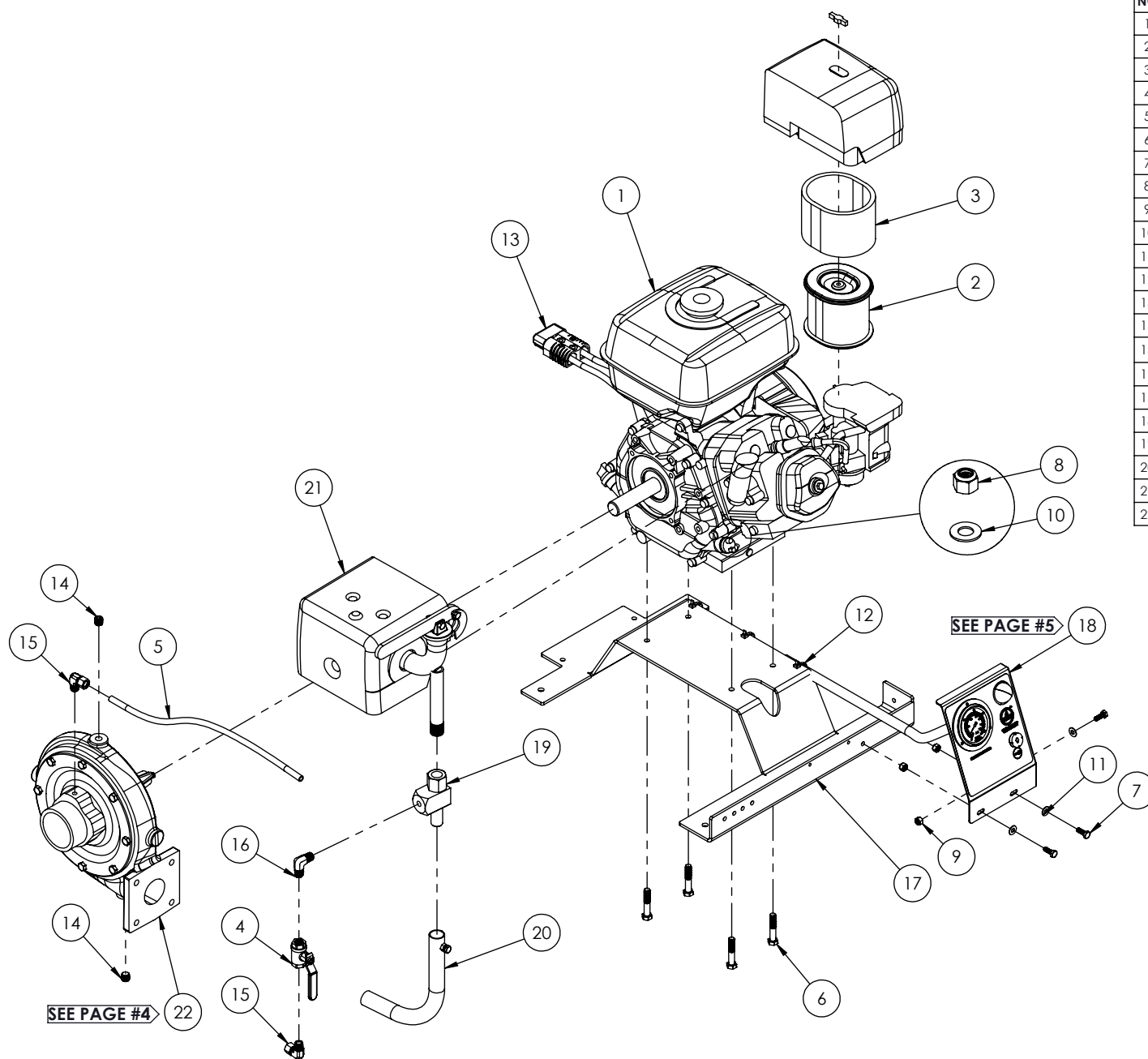
CREATED	TITLE :	SM-PFP-11hpHND-EM
BY: M.P.		
DATE: 20-10-16		SKID FRAME
VERIFIED	No:	PO-2611-0702-A
BY: M.P.		
DATE: 20-10-16		

WARNING

THIS DOCUMENT REMAINS THE PROPERTY OF C.E.T. FIRE PUMPS MFG.

ALL REPRODUCTION WITHOUT WRITTEN AGREEMENT FROM C.E.T. FIRE PUMPS MFG IS TOTALLY PROHIBITED.

A	Version A	01-01-16	M.P.
REV.	DESCRIPTION	DATE	BY



NO	PART NUMBER	DESCRIPTION	QTY
1	001-PP1-002	HONDA ENGINE (GX340) ELECTRIC/MANUAL	1
2	003-PP1-054	AIR FILTER	1
3	003-PP1-152	AIR FILTER FOAM	1
4	005-PP1-205	BALL VALVE 1/4" NPT-F	1
5	010-PP1-999	COPPER TUBE 3/8" x 15-1/2"	1
6	022-PP1-009	HEX. BOLT 3/8"-16 x 2" (Gr.5 ZINC)	4
7	022-PP1-416	HEX. BOLT 1/4"-20 x 3/4" (SS)	3
8	023-PP1-001	HEX. NYLON LOCKNUT 3/8"-16	4
9	023-PP1-006	HEX. NYLON LOCKNUT 1/4"-20	3
10	024-PP1-009	FLAT WASHER 3/8" int. x 7/8" ext.	4
11	024-PP1-404	FLAT WASHER 1/4" ID x 5/8" OD (SS)	3
12	040-PP1-025	CABLE TIE 11"	3
13	040-PP1-035	BATTERY QUICK CONNECT	1
14	045-PP1-101	PLUG HEX COUNTERSUNK 1/4" NPT-M	2
15	045-PP1-132	COMP. 90° ELBOW 3/8" TUBE x 1/4" NPT-M	2
16	045-PP1-224	90° ELBOW 1/4" NPT-M x 1/4" NPT-M	1
17	057-PP1-317A	SKID FRAME	1
18	PO-0000-1623	CONTROL PANEL	1
19	PO-0000-4102	VENTURY	1
20	PO-0000-4703	VENTURY EXHAUST	1
21	PO-0000-5723A	MUFFLER	1
22	PO-0011-2102	PUMP END ASSEMBLY	1



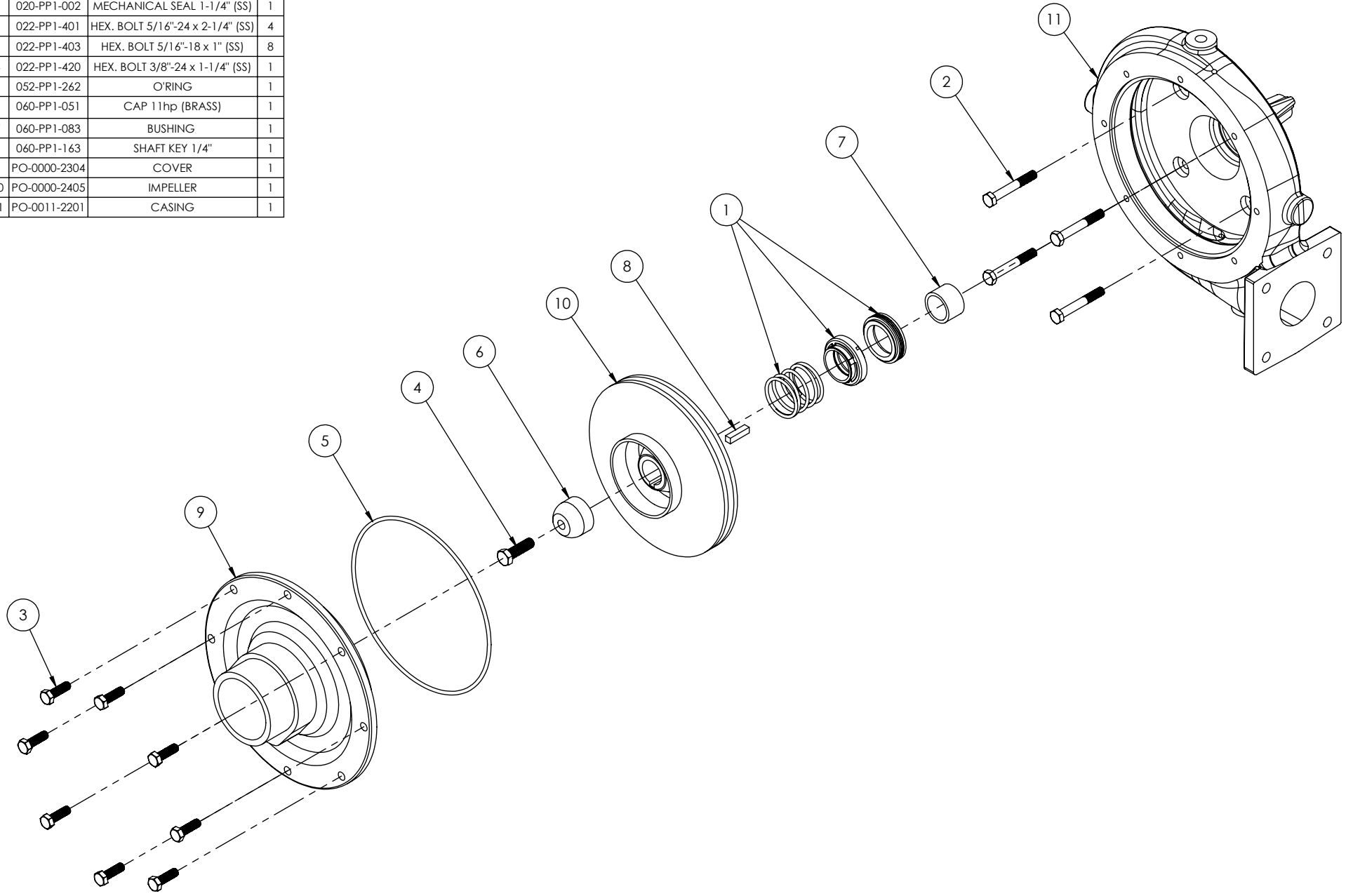
CREATED
 BY: M.P.
 DATE: 20-10-16
VERIFIED
 BY: M.P.
 DATE: 20-10-16

TITLE : SM-PFP-11hpHND-EM
SKID FRAME
No: PO-2611-0702-A

WARNING
 THIS DOCUMENT REMAINS THE PROPERTY OF C.E.T. FIRE PUMPS MFG.
 ALL REPRODUCTION WITHOUT WRITTEN AGREEMENT FROM C.E.T. FIRE PUMPS MFG IS TOTALLY PROHIBITED.

A	Version A	01-01-16	M.P.
REV.	DESCRIPTION	DATE	BY

NO	PART NUMBER	DESCRIPTION	QTY
1	020-PP1-002	MECHANICAL SEAL 1-1/4" (SS)	1
2	022-PP1-401	HEX. BOLT 5/16"-24 x 2-1/4" (SS)	4
3	022-PP1-403	HEX. BOLT 5/16"-18 x 1" (SS)	8
4	022-PP1-420	HEX. BOLT 3/8"-24 x 1-1/4" (SS)	1
5	052-PP1-262	O'RING	1
6	060-PP1-051	CAP 11hp (BRASS)	1
7	060-PP1-083	BUSHING	1
8	060-PP1-163	SHAFT KEY 1/4"	1
9	PO-0000-2304	COVER	1
10	PO-0000-2405	IMPELLER	1
11	PO-0011-2201	CASING	1



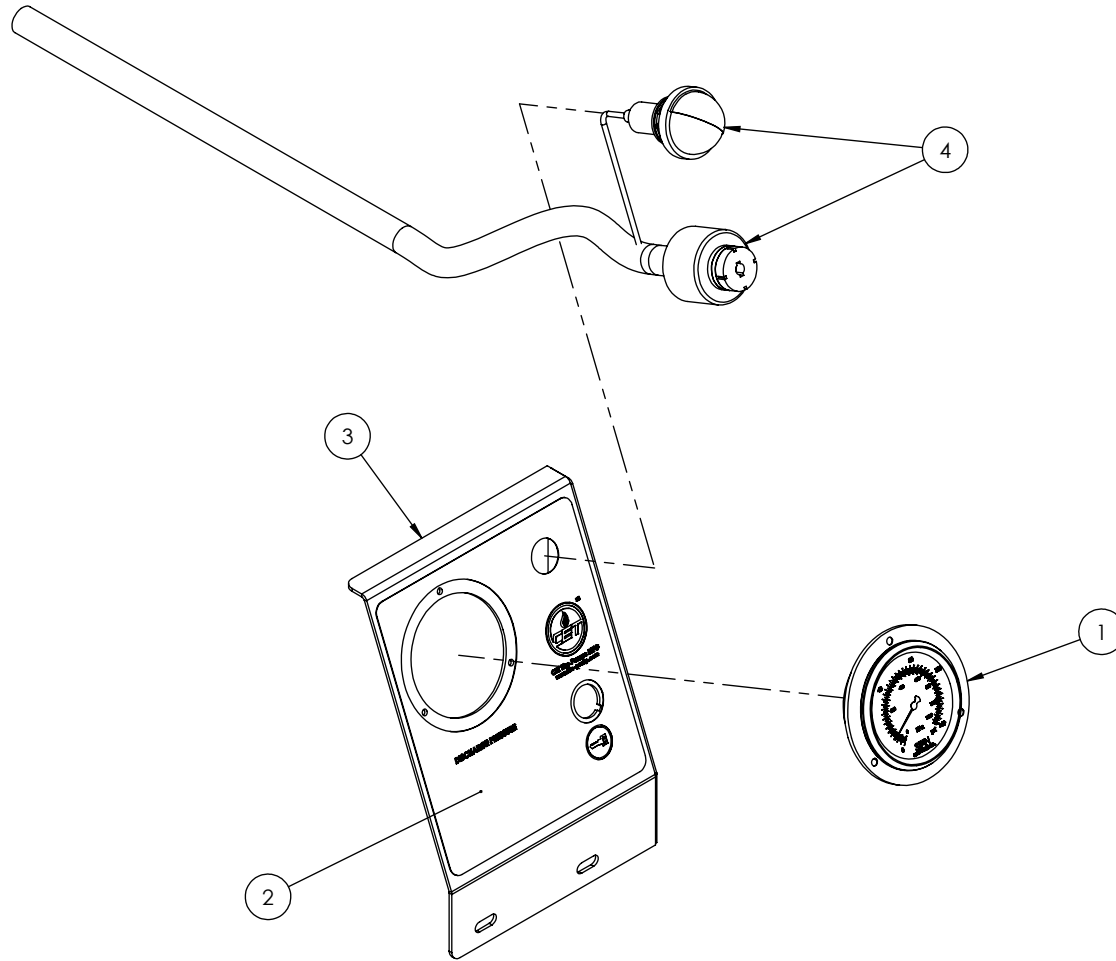
CREATED
 BY: M.P.
 DATE: 26-08-16
VERIFIED
 BY: M.P.
 DATE: 26-08-16

TITLE : PUMP END ASSEMBLY
 11hp Honda - 11
No: PO-2611-0702-A

WARNING
 THIS DOCUMENT REMAINS THE PROPERTY OF C.E.T. FIRE PUMPS MFG.
 ALL REPRODUCTION WITHOUT WRITTEN AGREEMENT FROM C.E.T. FIRE PUMPS MFG IS TOTALLY PROHIBITED.

A	Version A	01-01-16	M.P.
REV.	DESCRIPTION	DATE	BY

NO	PART NUMBER	DESCRIPTION	QTY
1	034-PP1-001	MANOMETER 0 to 160Psi	1
2	055-PP1-017D	STICKER	1
3	PO-0000-1501	CONTROL PANEL	1
4	PO-0000-9604	SWITCH-LIGHT-WIRING	1



CREATED	TITLE :	CONTROL PANEL
BY: M.V.		
DATE: 11-05-15		9-11hp HONDA
VERIFIED	No:	PO-2611-0702-A
BY: M.P.		
DATE: 11-05-16		

WARNING

THIS DOCUMENT REMAINS THE PROPERTY OF C.E.T. FIRE PUMPS MFG.

ALL REPRODUCTION WITHOUT WRITTEN AGREEMENT FROM C.E.T. FIRE PUMPS MFG IS TOTALLY PROHIBITED.

A	Version A	01-01-16	M.P.
REV.	DESCRIPTION	DATE	BY