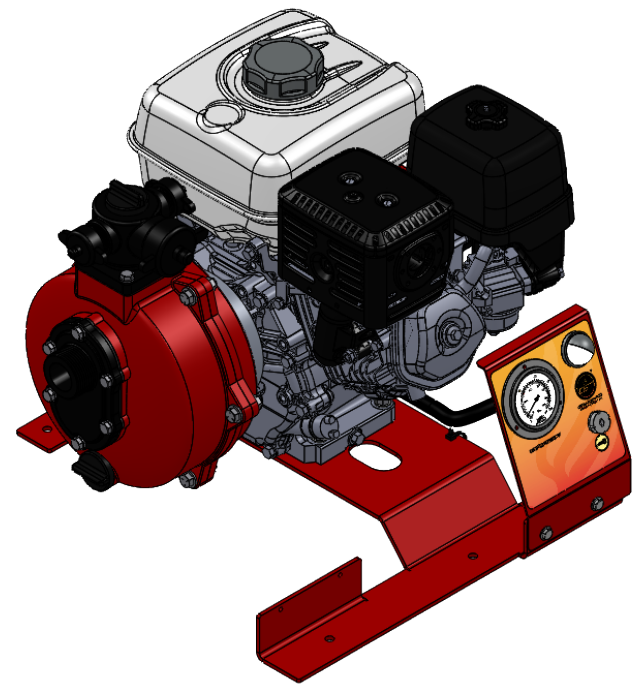
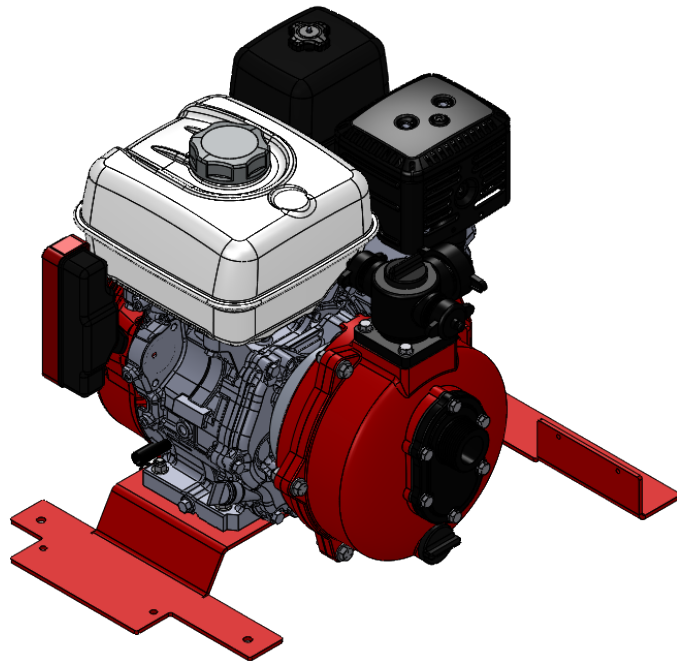
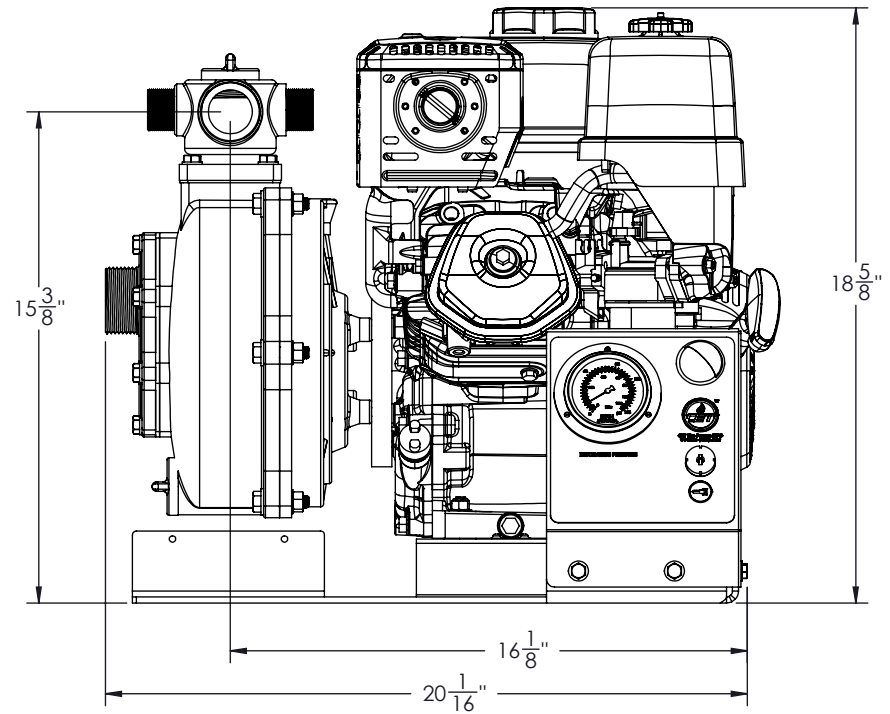
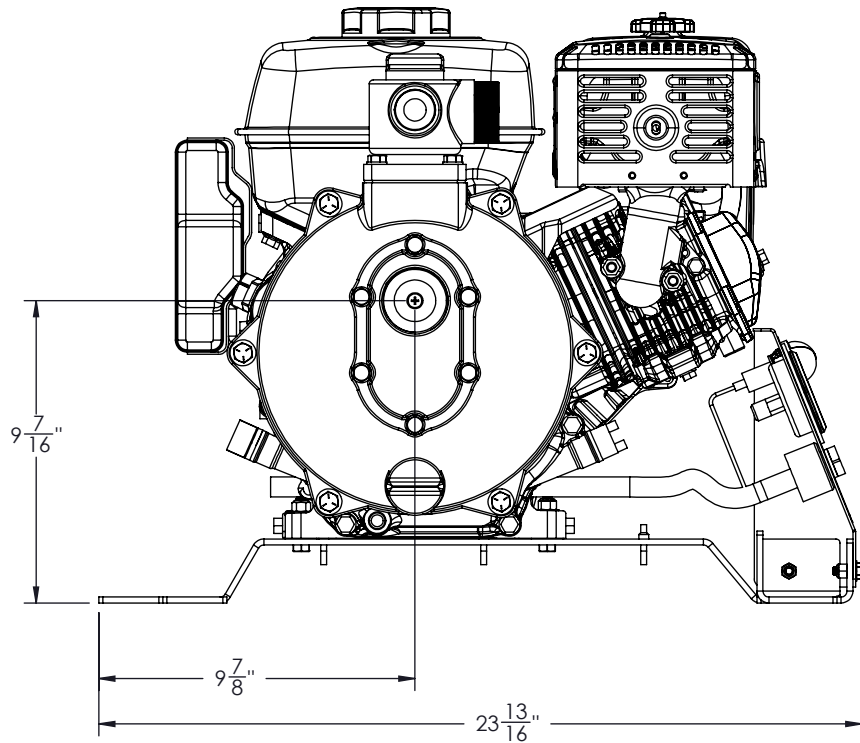


**SKID MOUNTED FIRE PUMP**  
**SM-PFP-9hpHND-EM-TWIN**  
**GX270 HONDA WITH HIGH-PRESSURE PUMP**



**WE CAN CUSTOMIZE AS YOU WANT**



**WET WEIGHT: 110lbs**



<b>CREATED</b>	<b>TITLE :</b> SM-PFP-9hpHND-EM-TWIN
BY: M.V.	<b>SKID FRAME</b>
DATE: 23-10-15	
<b>VERIFIED</b>	<b>No:</b>
BY: M.P.	<b>PO-09TW-0702-A</b>
DATE: 11-05-16	

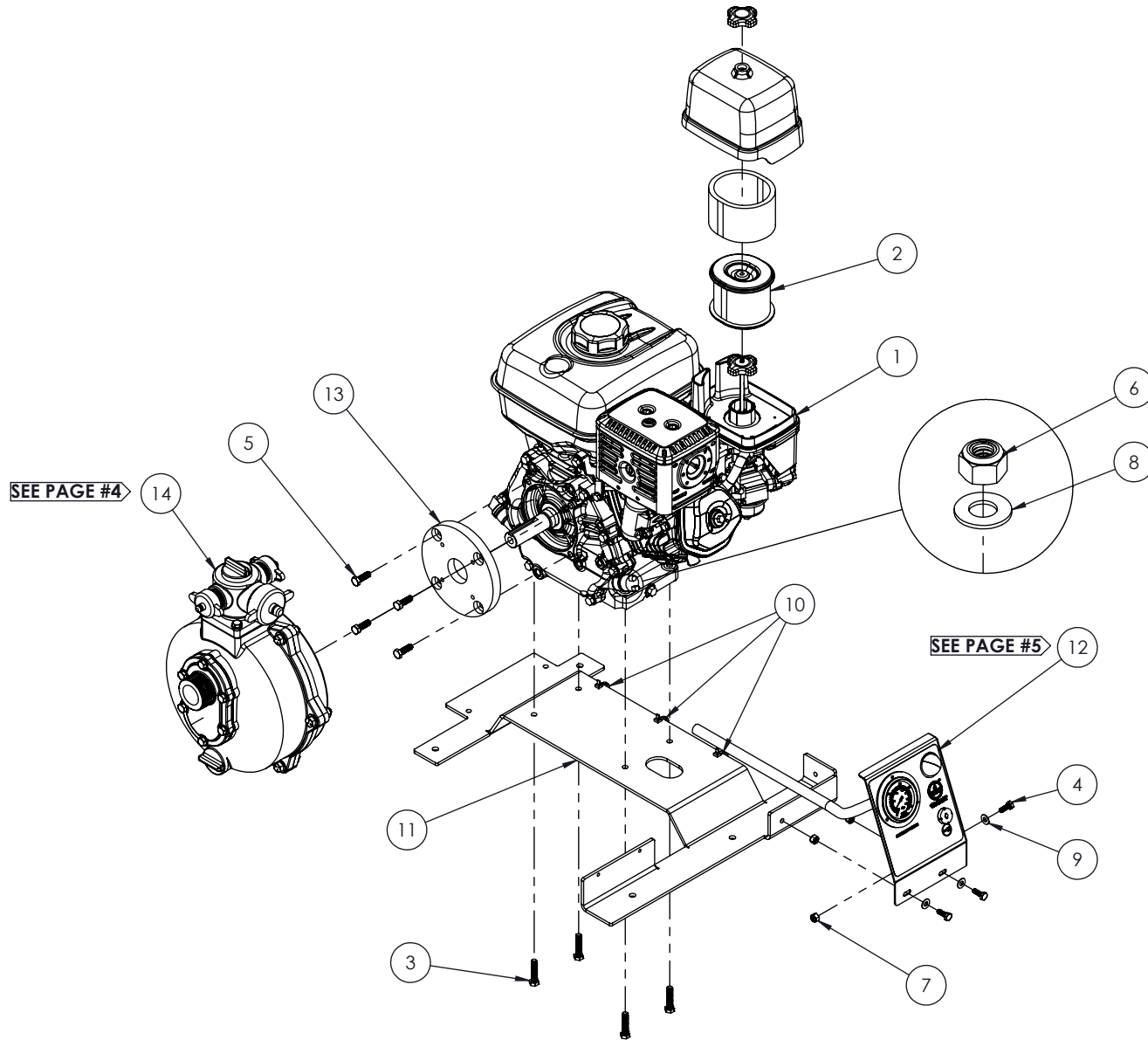
**WARNING**

THIS DOCUMENT REMAINS THE PROPERTY OF C.E.T. FIRE PUMPS MFG.

ALL REPRODUCTION WITHOUT WRITTEN AGREEMENT FROM C.E.T. FIRE PUMPS MFG IS TOTALLY PROHIBITED.

A	Version A	01-01-16	M.P.
REV.	DESCRIPTION	DATE	BY

NO	PART NUMBER	DESCRIPTION	QTY
1	001-PP1-004	HONDA ENGINE (GX270), MANUAL 9hp GAS	1
2	003-PP1-104	AIR FILTER	1
3	022-PP1-028	HEX. BOLT 5/16"-18 x 1-1/2"	4
4	022-PP1-416	HEX. BOLT 1/4"-20 x 3/4" (SS)	3
5	022-PP1-451	HEX. BOLT 5/16"-24 x 1" (SS)	4
6	023-PP1-005	HEX. NYLON LOCK NUT 5/16"-18	4
7	023-PP1-006	HEX. NYLON LOCKNUT 1/4"-20	3
8	024-PP1-004	FLAT WASHER 5/16" ID x 3/4" OD	4
9	024-PP1-404	FLAT WASHER 1/4" ID x 5/8" OD (SS)	3
10	040-PP1-025	CABLE TIE 11"	3
11	057-PP1-313A	SKID FRAME	1
12	PO-0000-1623	CONTROL PANEL	1
13	PO-0000-3603	ADAPTER	1
14	PO-00TW-2102	GOLIATH PUMP	1
15	003-PP1-151	AIR FILTER FOAM	1



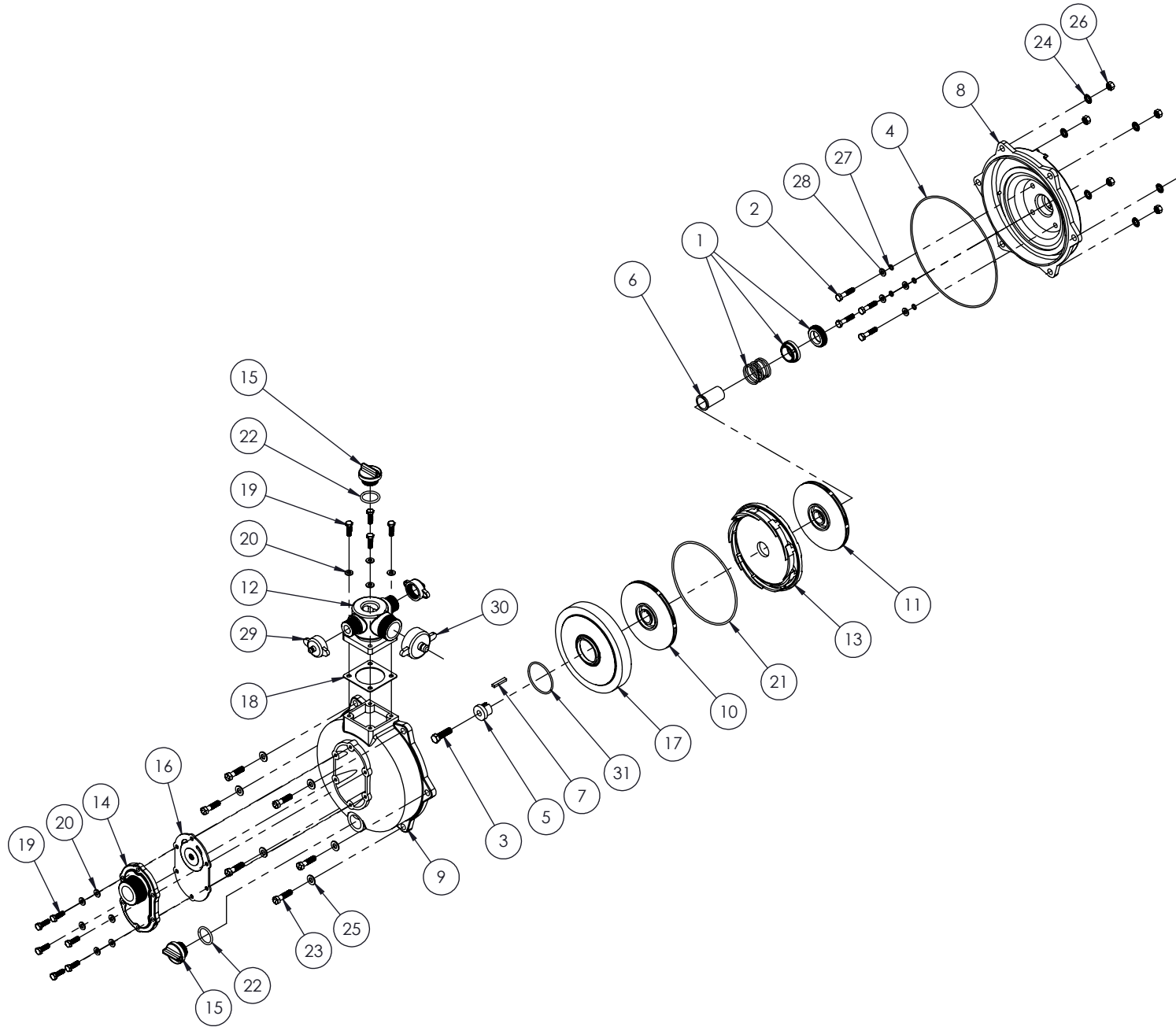
<b>CREATED</b>	<b>TITLE :</b> SM-PFP-9hpHND-EM-TWIN
BY: M.V.	<b>SKID FRAME</b>
DATE: 23-10-15	
<b>VERIFIED</b>	<b>No:</b> PO-09TW-0702-A
BY: M.P.	
DATE: 11-05-16	

**WARNING**

THIS DOCUMENT REMAINS THE PROPERTY OF C.E.T. FIRE PUMPS MFG.

ALL REPRODUCTION WITHOUT WRITTEN AGREEMENT FROM C.E.T. FIRE PUMPS MFG IS TOTALLY PROHIBITED.

A	Version A	01-01-16	M.P.
REV.	DESCRIPTION	DATE	BY

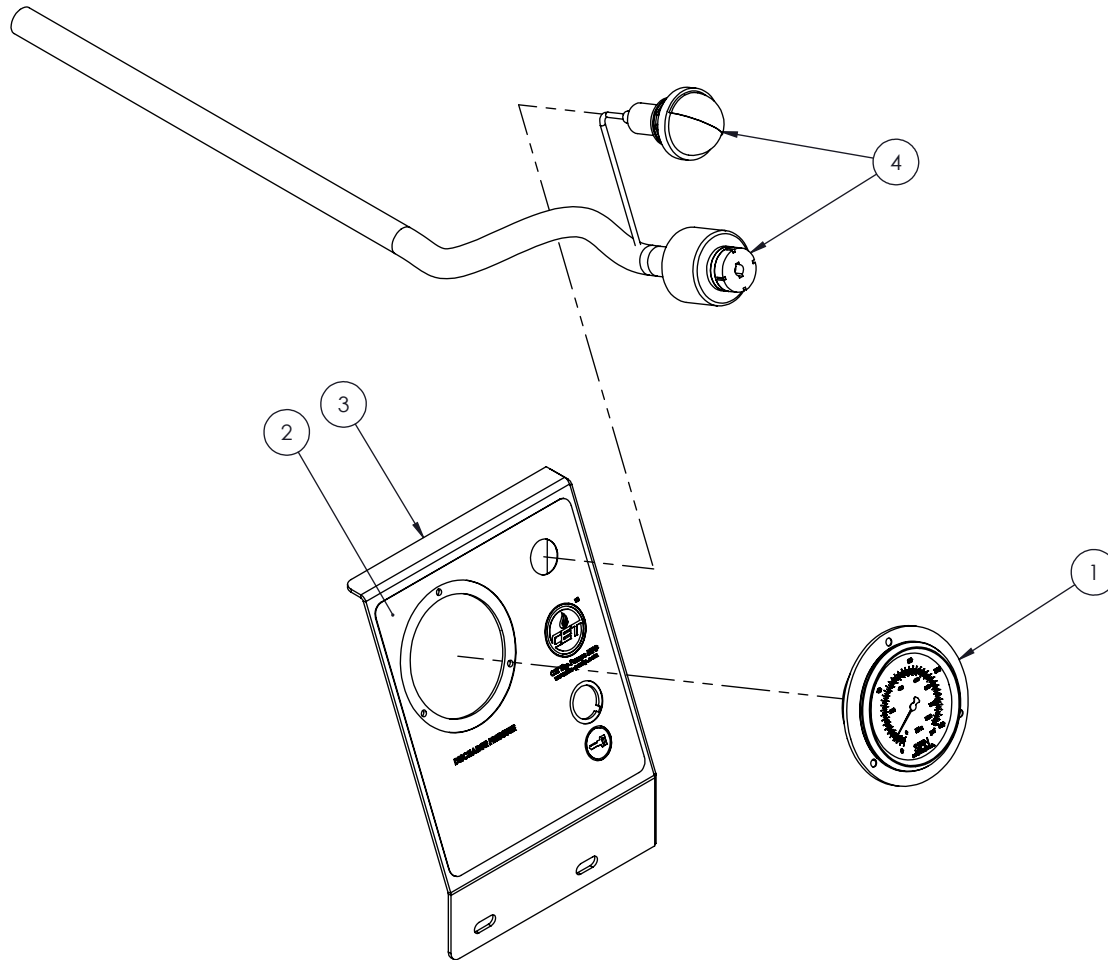


NO	PART NUMBER	DESCRIPTION	QTY
1	020-PP1-010	MECHANICAL SEAL 1" (SS)	1
2	022-PP1-402	HEX. BOLT 5/16"-18 x 1-1/2" (SS)	4
3	022-PP1-409	HEX. BOLT 7/16"-20 x 1-1/2" (SS)	1
4	052-PP1-001	O-RING	1
5	060-PP1-057	SHAFT EXTENSION	1
6	060-PP1-074	BUSHING	1
7	PO-0000-2802	SHAFT KEY 1/4" x 3/16" x 1-3/8"	1
8	PO-00TW-2202	CASING	1
9	PO-00TW-2301	COVER	1
10	PO-00TW-2403	FRONT IMPELLER	1
11	PO-00TW-2404	REAR IMPELLER	1
12	PO-00TW-2702	MANIFOLD	1
13	PO-00TW-2703	STATOR	1
14	PO-00TW-2801	INTAKE	1
15	PO-00TW-2802	PLUG	2
16	PO-00TW-2803	INTAKE GASKET	1
17	PO-00TW-2804	HIGH PRESSURE IMPELLER COVER	1
18	PO-00TW-2807	MANIFOLD GASKET	1
19	PO-00TW-2808	HEX. BOLT	10
20	PO-00TW-2809	WASHER	10
21	PO-00TW-2810	O-RING	1
22	PO-00TW-2811	O-RING	2
23	PO-00TW-2813	HEX. BOLT	6
24	PO-00TW-2814	INTERNAL LOCK WASHER	6
25	PO-00TW-2815	WASHER	6
26	PO-00TW-2816	HEX. NUT	6
27	PO-00TW-2817	O-RING	4
28	PO-00TW-2818	WASHER	4
29	PO-00TW-2824	1" CAP	2
30	PO-00TW-2825	1-1/2" CAP	1
31	PO-00TW-2826	O-RING	1

	<b>CREATED</b>	<b>TITLE :</b>	<b>GOLIATH PUMP</b>	<b>WARNING</b>  THIS DOCUMENT REMAINS THE PROPERTY OF C.E.T. FIRE PUMPS MFG.  ALL REPRODUCTION WITHOUT WRITTEN AGREEMENT FROM C.E.T. FIRE PUMPS MFG IS TOTALLY PROHIBITED.
	BY: M.V.		<b>9hp HONDA</b>	
	DATE: 23-10-15			
	<b>VERIFIED</b>	<b>No:</b>	<b>PO-09TW-0702-A</b>	
BY: M.P.				
DATE: 11-11-15				

A	Version A	01-01-16	M.P.
REV.	DESCRIPTION	DATE	BY

NO	PART NUMBER	DESCRIPTION	QTY
1	034-PP1-001	MANOMETER 0 to 160Psi	1
2	055-PP1-017D	STICKER	1
3	PO-0000-1501	CONTROL PANEL	1
4	PO-0000-9604	SWITCH-LIGHT-WIRING	1



<b>CREATED</b>	<b>TITLE :</b>	<b>CONTROL PANEL</b>
BY: M.V.		<b>9-11hp HONDA</b>
DATE: 11-05-15		
<b>VERIFIED</b>	<b>No:</b>	<b>PO-09TW-0702-A</b>
BY: M.P.		
DATE: 11-05-16		

**WARNING**

THIS DOCUMENT REMAINS THE PROPERTY OF C.E.T. FIRE PUMPS MFG.

ALL REPRODUCTION WITHOUT WRITTEN AGREEMENT FROM C.E.T. FIRE PUMPS MFG IS TOTALLY PROHIBITED.

A	Version A	01-01-16	M.P.
REV.	DESCRIPTION	DATE	BY